

ILLUSTRATED PARTS LIST

MODELS	SERIAL NUMBER PREFIX	MODELS	SERIAL NUMBER PREFIX
600016A	11-	600016M	11-
600016B	11-	600016N	11-
600016C	11-	600016P	11-
600016D	11-	600016R	11-
600016E	11-	600016S	11-
600016G	11-	600016T	11-
600016H	11-	600016U	11-
600016J	11-		
600016K	11-		

McC Model Chain Saws are identified by a model number (000000) followed by a suffix letter (A, B, C, etc.) stamped on the identification plate attached to the saw. Suffix letters denote variations in parts or assemblies in the manufacture of the saw.

Part numbers listed in this IPL which have a suffix letter or letters following the description, indicate the part is used only on the model(s) identified by the letter or letters.

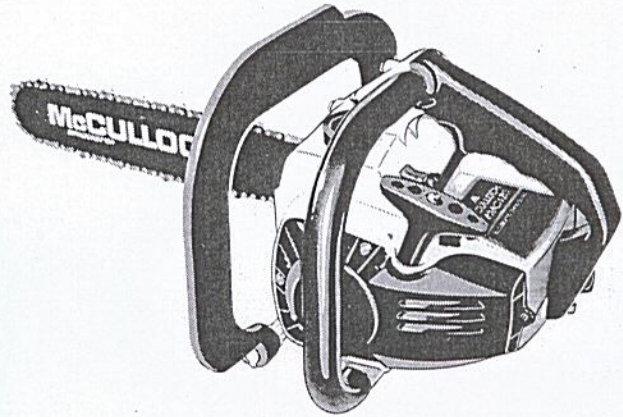
Part numbers and descriptions without suffix letter or letters apply to all models of the MAC 110/120 chain saw.

Part numbers which have one or more dots (.) preceding their description may be ordered individually but they are also included in the kit or assembly whose description begins directly above the dot(s).

Part numbers which have changed since the previous printing of the IPL covering these saws, are indicated by a dash (-) preceding the new part number.

The policy of McCulloch Corporation is one of continual improvement in design, manufacturing and engineering advancement wherever possible to assure still finer two-cycle power tools. Hence, specifications, equipment, colors, design and manufacturer's suggested list prices are subject to change without notice and McCulloch Corporation reserves the right to make such changes without prior notification or obligation to backfit or supply backfit components for units previously shipped from the factory.

MAC 110 MAC 120 Chain Saw



JANUARY 1977

- CONTENTS -

	<u>Page</u>
Figure 1. General	2
Figure 2. CHAIN BRAKE Assembly	4
Figure 3. Carburetor Assembly	4
Figure 4. Powerhead Assembly	6
Accessories	5
Service Specifications	3



MAC 110 MAC 120

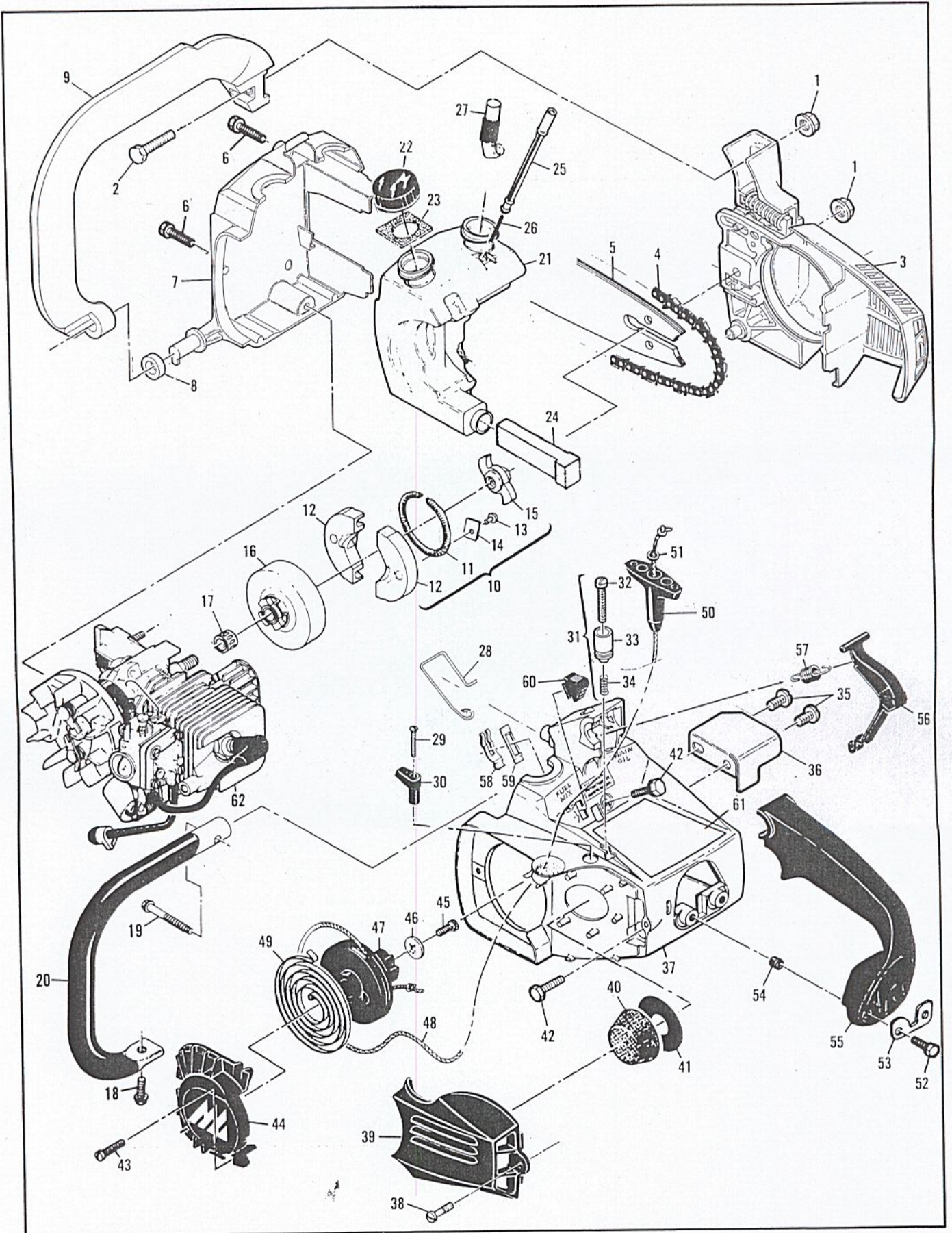


Figure 1. General

Figure 1. General

Item No.	Part Number	Description	Units Per Asy	Item No.	Part Number	Description	Units Per Asy
1	110676	Nut-Hx 1/4-28	2	35	110807	Screw Pan 8-32 x .312	2
2	110972	Screw-Hx 1/4-28	1	36	93290	Deflector-Sawdust	1
3		CHAIN BRAKE Asy (Fig.2)		37	91859	Kit-Shroud Asy	1
4		Chain Asy (See Accessories)		38	91796	. Screw-Air cleaner	1
5		Bar (See Accessories)		39	91853	. Cover-Air cleaner	1
6	110639	Screw-Hx hd 12-24 x 1	2	40	85127	Filter-Air	1
7	92868	Cover-Fuel & Oil tank	1	41	84918	Washer-Air seal	1
8	93194	Washer-Rubber	1	42	110953	Screw-Hx hd 12-24 x 5/8	3
9	92479	Lever-Handguard	1	43	110959	Screw-Hx hd 8-32 x 1/2	3
10	92743	Clutch Asy	1	44	90425	Cover-Starter	1
11	93608	. Spring Asy-Clutch	1	45	110041	Screw-Pan hd 8-32 x 1/2	1
12	92668	. Kit-Clutch shoe	2	46	68497	Washer-Special	1
13	110957	. . Rivet	2	47	92316	Drum/Rope Asy	1
14	85064	. . Plate	2	48	83203	. Rope-Starter	1
15	92721	. Spider	1	49	83078	Spring-Rewind	1
16	90150B	Drum/Spkt/Brng Asy	1	50	91255	Kit-Starter handle	1
17	91222	. Kit-Needle Brng	1	51	105490	. Washer-Starter handle	1
18	110953	Screw-Hx hd 12-24 x 5/8	1	52	110953	Screw-Hx hd 12-24 x 5/8	1
19	110686	Screw-Hx hd 13-16 x 2	1	53	84520A	Plate-Washer	1
20	84791	Frame & Grip Asy	1	54	84519	Sleeve-Handle	2
21	91454A	Kit-Fuel & Oil tank	1	55	83852A	Handle	1
22	91283	. Cap-Fuel & Oil (Unvented)	2	56	83878	Trigger	1
23	91148	. Seal-Fuel vent	1	57	83940	Spring-Trigger	1
24	84956	. Pickup-Fuel	1	58	83935	Contact-Switch	1
25	83900A	. Piston-Manual oiler	1	59	83936	Protector-Switch	1
26	83946	. Spring-Piston	1	60	83934	Button-Switch	1
27	85557	. Body-Oiler	1	61	93541	Plate-Name (B,E,J,K,P,S, T,U)	1
28	84611	Rod-Manual oiler	1	(61)	93540	Plate-Name (A,C,D,G,H, M,N,R)	1
29	110672	Screw-Oval hd 4-40 x 1	1	62		Powerhead Asy (Fig. 4)	
30	83870	Knob-Choke	1				
31*		Latch Asy-Throttle	1				
32*		. Screw-Long lock	1				
33*		. Latch-Throttle	1				
34*		. Spring-Compression	1				

*Part of Carburetor Kit, P/N 90918A, refer to Fig. 3.

Service Specifications

Displacement	1.8 cu. in. (30cc)
Clutch Engaging Speed	3800 to 4200 R.P.M.
Breaker Point Gap	.018" (.457 mm)
Timing	26° B.T.D.C.
Spark Plug Gap	.025" (.635 mm)

MAC 110 MAC 120

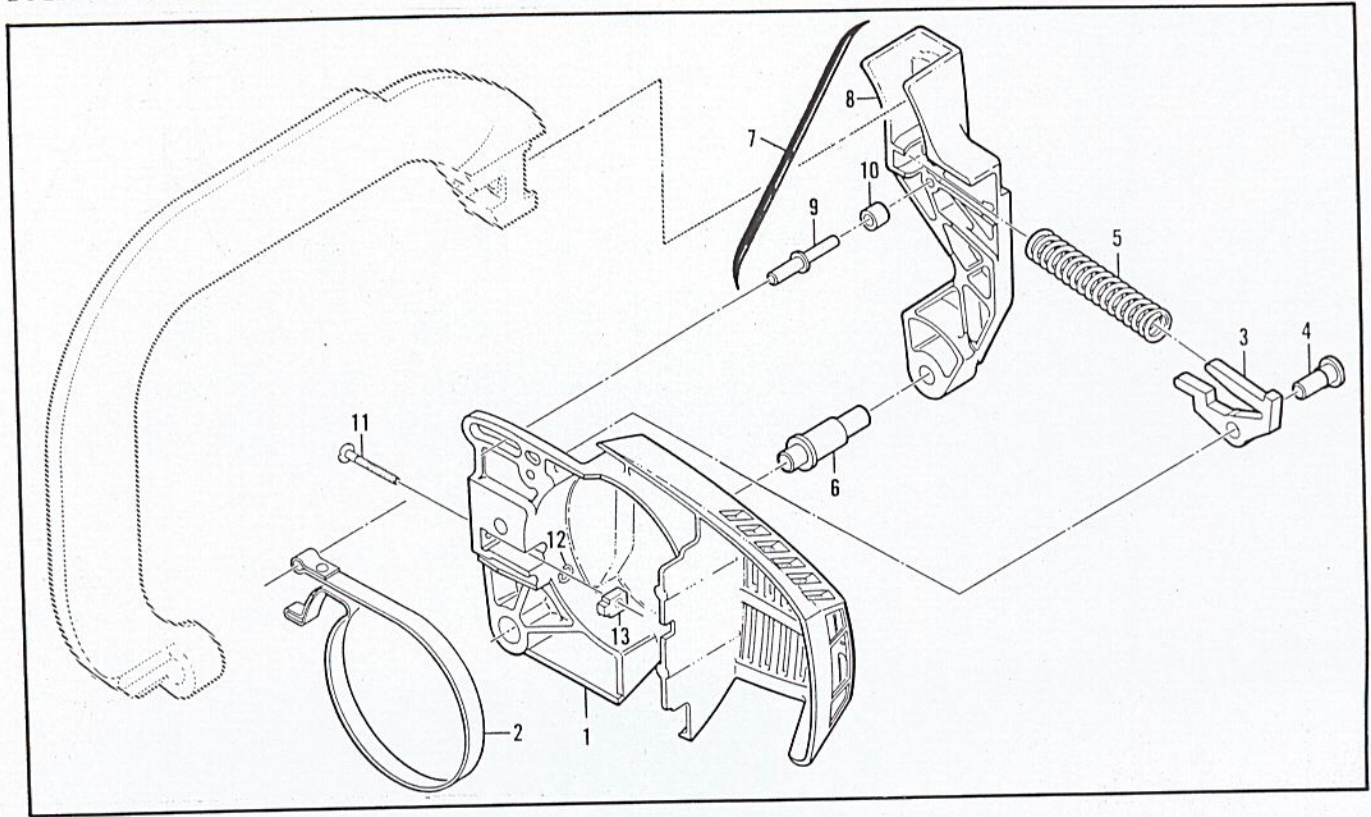


Figure 2. CHAIN BRAKE Assembly

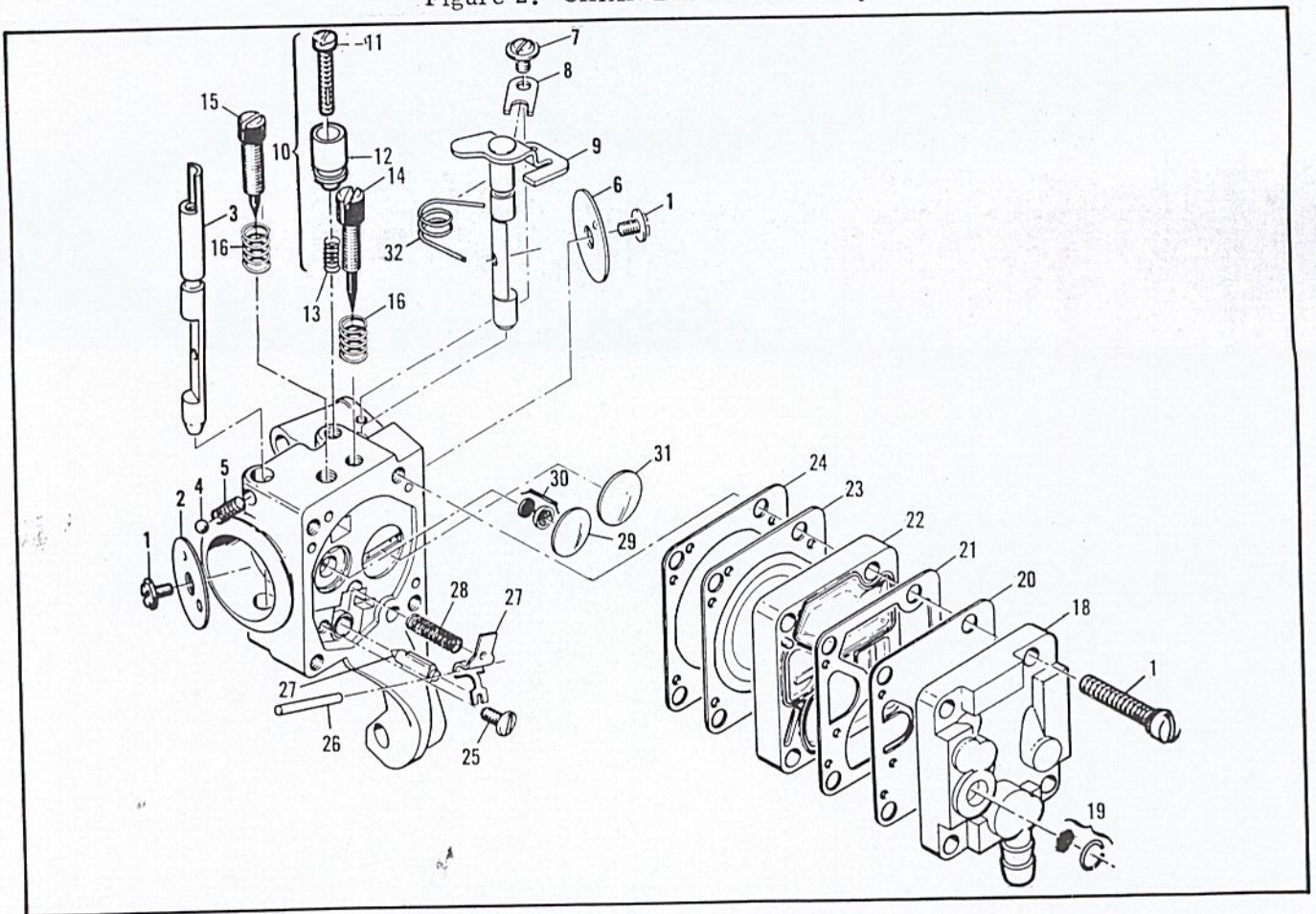


Figure 3. Carburetor Assembly

Figure 2. CHAIN BRAKE Assembly

Item No.	Part Number	Description	Units Per Asy
	92489	CHAIN BRAKE Asy	
1	92866	. Housing-Brake	1
2	92487	. Band-Brake	1
3	93092	. Latch	1
4	92485	. Pivot-Latch	1
5	93140	. Spring	1
6	92482	. Pivot-Lever	1

Item No.	Part Number	Description	Units Per Asy
7	93467	. Lever Asy-Actuating	1
8	92867	. . Lever	1
9	93139	. . Pin-Roller	1
10	93147	. . Bearing-Roller	1
11	90658	. Screw-Adjusting	1
12	110907	. Ring-Retaining	1
13	84929	. Nut-Bar adj.	1

Accessories

Part Number	Description
90745	Bar-10" Mini Pro (A,M)
90641N	Chain Asy-10" MP 370G (A,M)
90630	Bar-10" Mini Mac (C,G,R)
90638N	Chain Asy-10" MM 370G (C,G,R)
90549	Bar-12" Mini Pro (B,D,K,N,P,S, T,U)
90642N	Chain Asy-12" MP 370G (B,D,N, P)
90639N	Chain Asy-12" MM 370G (K,S,T, U)

Part Number	Description
90550	Bar-14" Mini Pro (J)
90640N	Chain Asy-14" MM 370G (J)
93090	Guide-Timing
93283	Case-Carrying (12" Guard)
90256	Kit-Tune up
85062	Kit-Piston tool
89685	Kit-Spark arrester
88756	Scrench
90607A	Guide-File
92976	Guard-Bar, 12"

Figure 3. Carburetor Assembly

Item No.	Part Number	Description	Units Per Asy
	90918A	Carburetor Asy-Walbro MDC 13	1
1*	83755	. Screw-Plate	2
2	68556	. Plate-Choke	1
3	85033	. Shaft-Choke	1
4*	100302	. Ball-Choke friction	1
5*	67504	. Spring-Choke friction	1
6	68553	. Plate-Throttle	1
7	70798	. Screw-Clip	1
8	68554	. Clip-Throttle shaft	1
9	90471	. Shaft Asy-Throttle	1
10	93437	. Latch Asy-Throttle	1
11		. . Screw-Long lock	1
12		. . Latch-Throttle	1
13		. . Spring Compression	1
14*	86446	. Needle-Idle	1
15*	86447	. Needle-High speed	1
16*	67502	. Spring-Needle	2
17*	68564	. Screw Asy-Body	4

Item No.	Part Number	Description	Units Per Asy
18	91347	. Cover Asy-Pump	1
19	85629	. . Kit-Vent screen	1
20*	68563	. Diaphragm-Fuel pump	1
21*	85035	. Gasket-Pump diaphragm	1
22	85030	. Body-Fuel pump	1
23*	85036	. Diaphragm-Metering	1
24*	85034	. Gasket-Diaphragm	1
25*	67500	. Screw-Lever pin	1
26*	67508	. Pin-Lever	1
27	85059	. Kit-Needle & Lever	1
28*	68567	. Spring-Lever	1
29*	68559	. Plug-Welsh 7/16	1
30*	83758	. Kit-Check valve	1
31*	68560	. Plug-Welsh 1/2	1
32	89785	. Spring-Throttle return	1
	86463	Repair Kit	

*Included in Repair Kit, P/N 86463

MAC 110 MAC 120

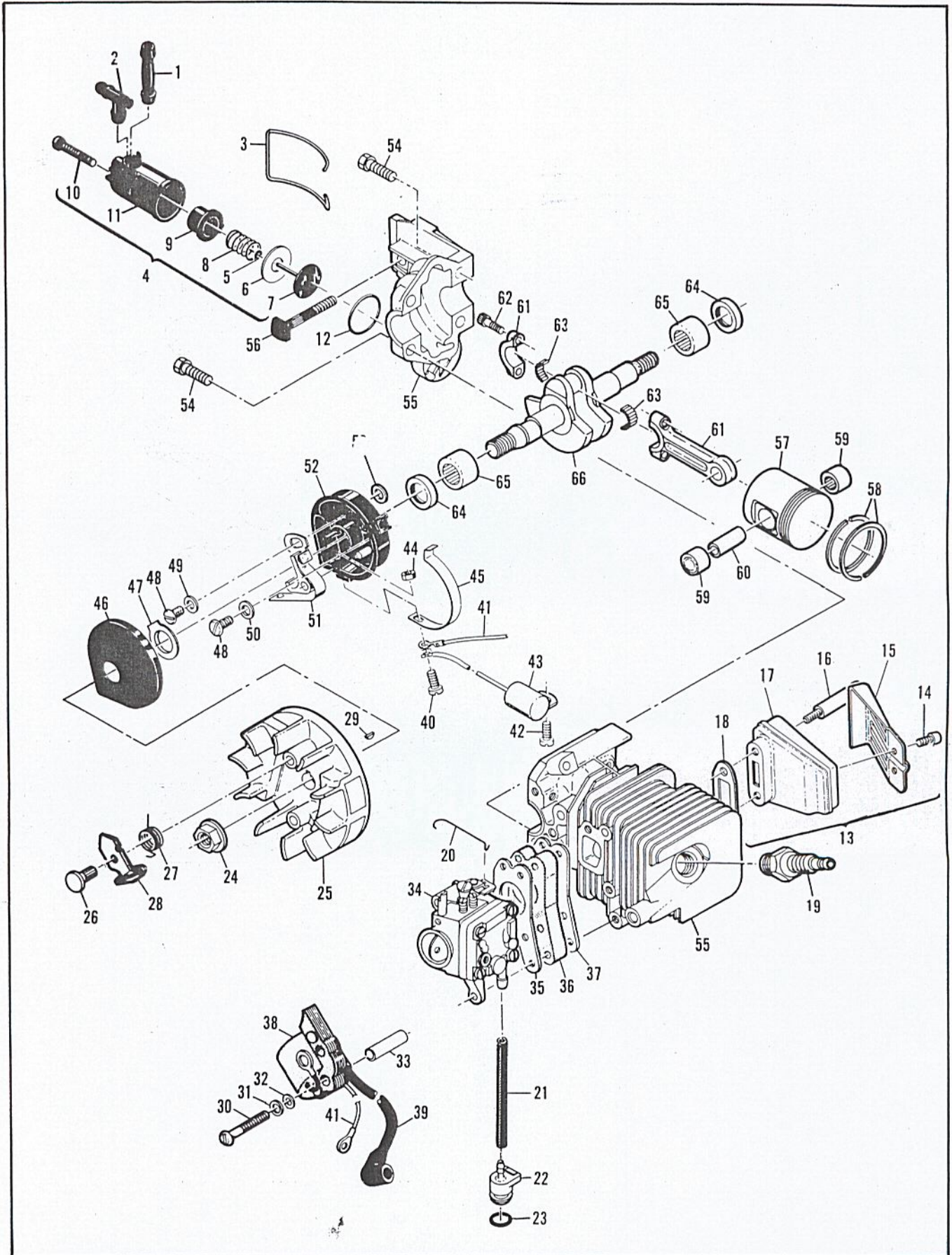


Figure 4. Powerhead Assembly

Figure 4. Powerhead Assembly

Item No.	Part Number	Description	Units Per Asy
1	83898	Connector-Outlet	1
2	84613	Connector-Pump	1
3	83896	Bail-Mounting	1
4	83886	Pump Asy-Oiler	1
5	105603	. "O" Ring	1
6	85769	. Ring-Pump piston	1
7	92204	. Piston Asy-Pump	1
8	83891	. Spring-Pump	1
9	83890	. Sleeve-Pump	1
10	110651	. Screw-Adjustment	1
11	83887	. Body Asy-Pump	1
12	110653	. "O" Ring	1
13	92962	Kit-Muffler	1
14	110681	. Screw-Skt hd 10/24 x 1/4	2
15	92961	. Deflector-Exhaust	1
16	93036	. Screw-Special	2
17	92956	. Body-Cover	1
18	68747	. Gasket	1
19	63097	Spark Plug (A,B,C,D,G,J, K,M,N,P,R,S,T,U)	1
(19)	93018	Spark Plug (E,H)	1
20	89274	Rod-Throttle	1
21	89059	Hose-Fuel	1
22	90660	Adaptor-Fuel hose	1
23	110908	"O" Ring	1
24*	110970	Nut-Hx 5/16-24	1
25	91961	Flywheel & Pawl Asy	1
26	68796	. Pin-Pawl	2
27	67814	. Spring-Pawl	2
28	91872	. Pawl-Starter	2
29	102164	Key-Woodruff	1
30	110586	Screw-Pan hd 8-32 x 1-3/4	3
31	105976	Washer-#8	3
32	67177	Washer-Insulating	3
33	68198	Tube Insulating	3

Item No.	Part Number	Description	Units Per Asy
34		Carburetor Asy (Fig. 3)	
35	68197	Gasket-Carburetor	1
36	90713	Insulator-Carburetor	1
37	90714	Gasket-Insulator	1
38	84957	Coil & Lamination Asy	1
39	50120	. Wire Asy-Spark plug	1
40	110617	Screw-Pan hd 6-32 x 5/8	1
41	69344	Wire Asy-Coil	1
42	110041	Screw-Pan hd 8-32 x 1/2 s/t	1
43	85358	Condenser	1
44	110975	Nut-Hx 6-32	1
45	84502	Connector-Stop switch	1
46	67841	Cover-Breaker box	1
47	69323	Seal-Breaker box	1
48	110969	Screw-Hx hd 8-32 x 1/2	2
49	69322	Washer-Special	1
50	105976	Washer- #8	1
51	88811	Breaker Asy	1
52	84505A	Kit-Breaker Box	1
53	92037	. Washer	1
54	110639	Screw-Hx hd 12-24 x 1	4
55	92279	Kit-Cyl/C'Case/Piston	1
56	83856	. Bolt-Bar mounting	1
57	92274	. Piston Asy	1
58	92752	. . Set-Piston Rings	1
59	110538	. . Bearing-Needle	2
60	66867	Pin-Piston	1
61	68097	Connecting Rod Asy	1
62	66853	. Screw-Special	2
63	68095	. Roller-Needle (Set of 20)	1
64	83859	Seal-Oil	2
65	66854	Bearing-Needle	2
66	91932	Crankshaft	1

*Flywheel nut torque should be 190 to 200 pound x inches (21.5 to 22.6 N.m) for nut, P/N 110970.