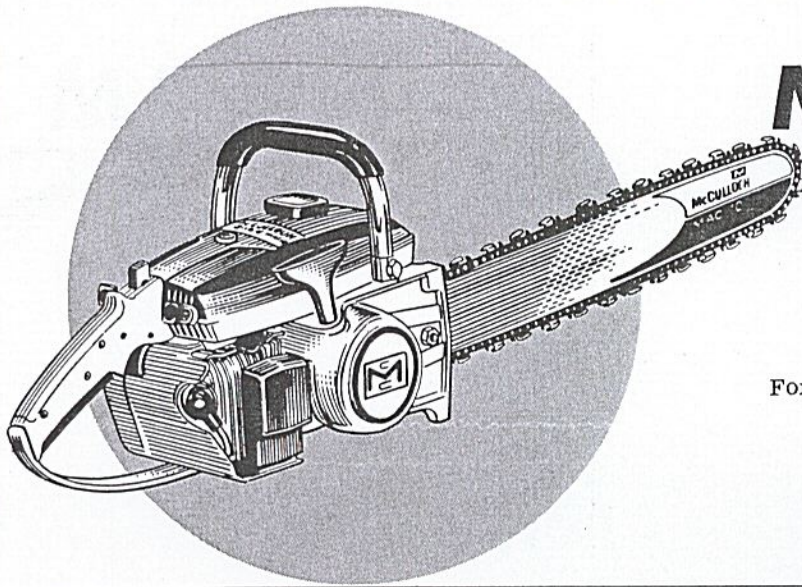


MASTER ILLUSTRATED PARTS LIST



MAC 5-10A Chain Saw

For cancelled and superseded parts lists,
see page 5

April 1971

The policy of McCulloch Corporation is one of continual improvement in design, manufacturing and engineering advancement wherever possible to assure still finer two-cycle power tools. Hence, specifications, equipment, colors, design and manufacturer's suggested list prices are subject to change without notice and McCulloch Corporation reserves the right to make such changes without prior notification or obligation to backfit or supply backfit components for units previously shipped from the factory.

· CONTENTS ·

| | Page |
|---|------|
| Figure 1. General | 2 |
| Figure 2. Clutch Guard Assembly | 6 |
| Figure 3. Fuel Tank Assembly | 6 |
| Figure 4. Carburetor Assembly | 8 |
| Figure 5. Carburetor Assembly | 10 |
| Figure 6. Powerhead Assembly | 12 |

This Master Illustrated Parts List gives the name, number and interchangeability between engines, of service and replacement parts which were used on or are presently for all MAC 5-10A chain saws manufactured to date.

Information about the List and how to use it will be found on the back cover.
Read the information before you start to use the List.

 **McCULLOCH**

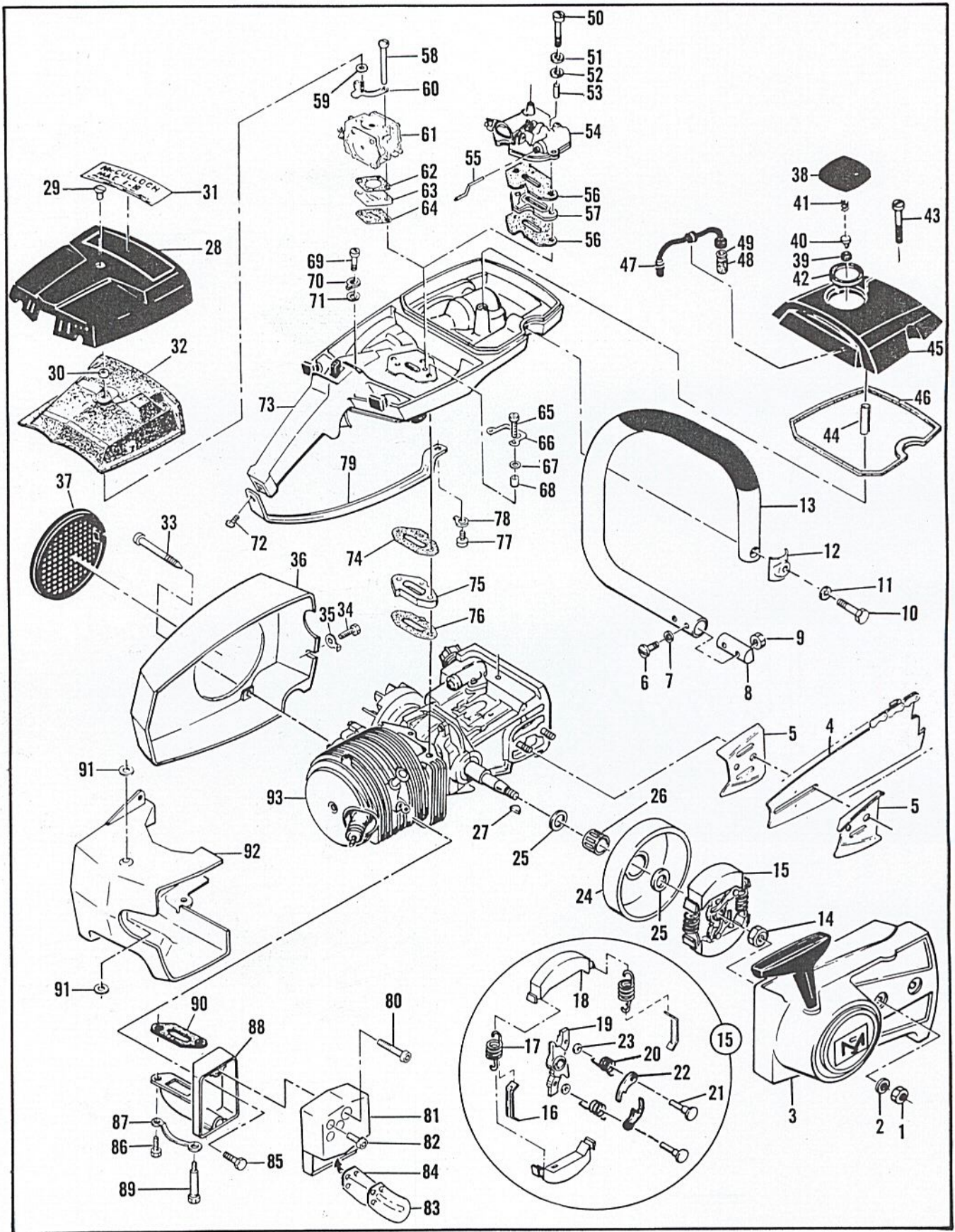


Figure 1. General

FIGURE 1. GENERAL

| Item No. | Part Number | Description | Units Per Assy | Usable On Code | | | | | | | | |
|---|----------------|--|----------------|----------------|--------|---|---|---|----------------|----------------|-------------|--------------|
| MAC 5-10A Usable On Code | | | | | | | | | | | | |
| <table border="1" style="width: 100%; border-collapse: collapse;"> <thead> <tr> <th style="width: 25%;">Letter</th> <th style="width: 25%;">A</th> <th style="width: 25%;">B</th> <th style="width: 25%;">C</th> </tr> </thead> <tbody> <tr> <td>Serial Numbers</td> <td>Without Prefix</td> <td>Prefixed 1-</td> <td>Prefixed 10-</td> </tr> </tbody> </table> | | | | | Letter | A | B | C | Serial Numbers | Without Prefix | Prefixed 1- | Prefixed 10- |
| Letter | A | B | C | | | | | | | | | |
| Serial Numbers | Without Prefix | Prefixed 1- | Prefixed 10- | | | | | | | | | |
| 1 | 110454 | Nut - Hex 5/16-24 | 2 | All | | | | | | | | |
| 2 | 100440 | Washer - 5/16 | 2 | All | | | | | | | | |
| 3 | | Clutch Guard & Starter Assy (See Figure 2) | | All | | | | | | | | |
| 4 | | Bar & Chain Assys | | All | | | | | | | | |
| 5 | 64325 | Plate - Bar protector | 2 | All | | | | | | | | |
| 6 | 102761 | Screw - Hex hd 10-24 x 7/8 | 2 | All | | | | | | | | |
| 7 | 100352 | Washer - #10 | 2 | All | | | | | | | | |
| 8 | 61678 | Plug - Nut retainer | 1 | All | | | | | | | | |
| 9 | 101326 | Nut - Hex 10-24 | 2 | All | | | | | | | | |
| 10 | 105187 | Screw - Skt hd 1/4-20 x 1-1/8 | 1 | A | | | | | | | | |
| | 102130 | Screw - Hex hd 1/4-20 x 1-1/2 | 1 | B,C | | | | | | | | |
| 11 | 100004 | Washer - 1/4 | 1 | A | | | | | | | | |
| | 100153 | Lockwasher - 1/4 | 1 | B,C | | | | | | | | |
| 12 | 63484 | Clamp | 1 | B,C | | | | | | | | |
| 13 | 84269 | Frame & Grip Assy | 1 | All | | | | | | | | |
| 14 | 103746 | Nut - Hex 3/8-24 | 1 | All | | | | | | | | |
| 15 | 67148 | Clutch Assy | 1 | All | | | | | | | | |
| 16 | 64583 | . Retainer - Clutch spring | 2 | All | | | | | | | | |
| 17 | 66384 | . Spring - Clutch | 2 | All | | | | | | | | |
| 18 | 67233 | . Shoe - Clutch | 2 | All | | | | | | | | |
| 19 | 67149 | . Rotor Assy - Clutch | 1 | All | | | | | | | | |
| 20 | 68837 | . Spring - Pawl | 2 | All | | | | | | | | |
| 21 | 67112 | . Rivet - Pawl | 2 | All | | | | | | | | |
| 22 | 64857 | . Pawl - Starter | 2 | All | | | | | | | | |
| 23 | 65473 | . Washer - Special | 2 | All | | | | | | | | |
| 24 | 65370 | Kit - Sprocket & Drum Assy | 1 | All | | | | | | | | |
| 25 | 61692 | . Shim - Sprocket | 2 | All | | | | | | | | |
| 26 | 110330 | Bearing - Sprocket | 1 | All | | | | | | | | |
| 27 | 103879 | Key - Woodruff | 1 | All | | | | | | | | |
| 28 | 65750 | Cover Assy - Air cleaner | 1 | A,B | | | | | | | | |
| | 66597 | Cover Assy - Air cleaner | 1 | C | | | | | | | | |
| 29 | 65720 | . Nut - Cover | 1 | A,B | | | | | | | | |
| | 66290 | . Nut - Cover | 1 | C | | | | | | | | |
| 30 | 66665 | . Spacer - Nut | 1 | C | | | | | | | | |
| 31 | 65463 | Nameplate | 1 | A,B | | | | | | | | |
| | 67386 | Nameplate | 1 | C | | | | | | | | |
| 32 | 68520 | Filter - Air | 1 | All | | | | | | | | |
| 33 | 62978 | Screw - Special | 3 | All | | | | | | | | |
| 34 | 105348 | Screw - Hex hd 10-24 x 1/2 (SEMS) | 1 | C | | | | | | | | |
| 35 | 110264 | Washer - #10 | 1 | C | | | | | | | | |
| 36 | 83521 | Kit - Fan housing | 1 | All | | | | | | | | |
| 37 | 55615 | . Guard - Flywheel | 1 | All | | | | | | | | |
| 38 | 68531 | Cap Assy - Fuel | 1 | All | | | | | | | | |
| 39 | 68533 | . Plug | 1 | All | | | | | | | | |
| 40 | 63041 | . Valve | 1 | All | | | | | | | | |
| 41 | 63040 | . Spring | 1 | All | | | | | | | | |
| 42 | 65671 | . Gasket | 1 | All | | | | | | | | |
| 43 | 110402 | Screw - Oval hd 12-24 x 2-3/8 | 1 | All | | | | | | | | |
| 44 | 69686 | Spacer - Cover | 1 | All | | | | | | | | |
| 45 | 63288 | Cover - Fuel tank | 1 | All | | | | | | | | |
| 46 | 69345 | Gasket - Cover | 1 | All | | | | | | | | |
| 47 | 64848 | Hose Assy - Fuel | 1 | All | | | | | | | | |
| 48 | 63932 | . Filter - Fuel | 1 | All | | | | | | | | |

This list is continued on next page

FIGURE 1. GENERAL (Continued)

| Item No. | Part Number | Description | Units Per Assy | Usable On Code |
|----------|-------------|--------------------------------------|----------------|----------------|
| 49 | 100440 | . Washer | 1 | All |
| 50 | 110551 | Screw - Hex hd 10-24 x 2-1/8 | 2 | A,B |
| 51 | 64856 | Washer - Special | 2 | A,B |
| 52 | 68203 | Washer - Special | 2 | A,B |
| 53 | 65726 | Sleeve - Insulator | 2 | A,B |
| 54 | | Carburetor Assy (See Figure 4) | | A,B |
| 55 | 65758 | Rod - Primer | 1 | A,B |
| 56 | 65739 | Gasket - Carburetor | 2 | A,B |
| 57 | 66232 | Insulator - Carburetor | 1 | A,B |
| 58 | 110553 | Screw - Hex hd 10-24 x 1-3/8 | 2 | C |
| 59 | 67062 | Seal - Aircleaner | 1 | C |
| 60 | 66681 | Bracket - Air cleaner cover | 1 | C |
| 61 | | Carburetor Assy (See Figure 5) | | C |
| 62 | 68132 | Gasket - Carburetor | 1 | C |
| 63 | 84078 | Insulator - Carburetor | 1 | C |
| 64 | 68131 | Gasket - Insulator | 1 | C |
| 65 | 110553 | Screw - Hex hd 10-24 x 1-3/8 | 2 | C |
| 66 | 68582 | Lockplate | 1 | C |
| 67 | 100003 | Washer - #10 | 2 | C |
| 68 | 66189 | Sleeve | 2 | C |
| 69 | 110516 | Screw - Hex hd 10-24 x 1-1/8 | 1 | All |
| 70 | 63475 | Lockplate | 1 | All |
| 71 | 64856 | Washer - Special | 1 | All |
| 72 | 110353 | Screw - Oval hd 10-24 x 3/8 | 1 | All |
| 73 | | Fuel Tank Assy (See Figure 3) | | All |
| 74 | 64852 | Gasket - Fuel tank | 1 | A,B |
| | 84082 | Gasket - Fuel tank | 1 | C |
| 75 | 63258A | Insulator - Fuel tank | 1 | A,B |
| | 66661 | Insulator - Fuel tank | 1 | C |
| 76 | 68129 | Gasket - Insulator | 1 | A,B |
| | 84082 | Gasket - Insulator | 1 | C |
| 77 | 102388 | Screw - Hex hd 10-24 x 5/8 | 1 | All |
| 78 | 69890 | Lockplate | 1 | All |
| 79 | 85007 | Brace - Handle | 1 | All |
| | 68191 | Kit - Spark arrester | 1 | All |
| 80 | 104560 | . Screw - Skt hd 10-24 x 1-1/2 | 2 | All |
| 81 | 65532 | . Cover & Valve Assy | 1 | All |
| 82 | 110472 | . . Screw - Skt hd 8-32 x 5/16 | 2 | All |
| 83 | 84780 | . . Stop - Reed | 1 | All |
| 84 | 84779 | . . Valve - Reed | 1 | All |
| 85 | 84776 | . Screw - Special | 1 | All |
| 86 | 110529 | . Screw - Hex hd 10-24 x 1/2 | 1 | All |
| 87 | 67922 | . Lockplate | 1 | All |
| 88 | 83106 | . Body & Duct Assy | 1 | All |
| 89 | 68187 | . . Screw - Special | 1 | All |
| 90 | 68149 | . Gasket - Spark arrester | 1 | All |
| 91 | 63993 | Insulator - Shroud | 2 | A,B |
| | 68581 | Insulator - Shroud | 2 | C |
| 92 | 67910 | Shroud | 1 | All |
| 93 | | Powerhead Assy (See Figure 6) | | All |

SERVICE SPECIFICATIONS

| | |
|-----------------------------|-------------------------|
| Spark Plug Gap ----- | 0.025 in. |
| Lamination Gap ----- | 0.010 to 0.015 in. |
| Breaker Point Gap ----- | 0.018 in. |
| Torque Values | |
| Flywheel Nut ----- | 240 to 300 inch-pounds. |
| Clutch Nut ----- | 160 to 170 inch-pounds. |
| Connecting Rod Screws ----- | 65 to 70 inch-pounds. |

Master Illustrated Parts List, P/N 85763 supersedes and cancels all previous lists issued for the MAC 5-10A saw. Discard the following lists:

IPL 65663 and

- Parts List Sheet 66101 covering saws having serial numbers without prefix
- Parts List Sheet 66516 covering saws having serial numbers prefixed 1-
- Parts List Sheet 67405 covering saws having serial numbers prefixed 10-

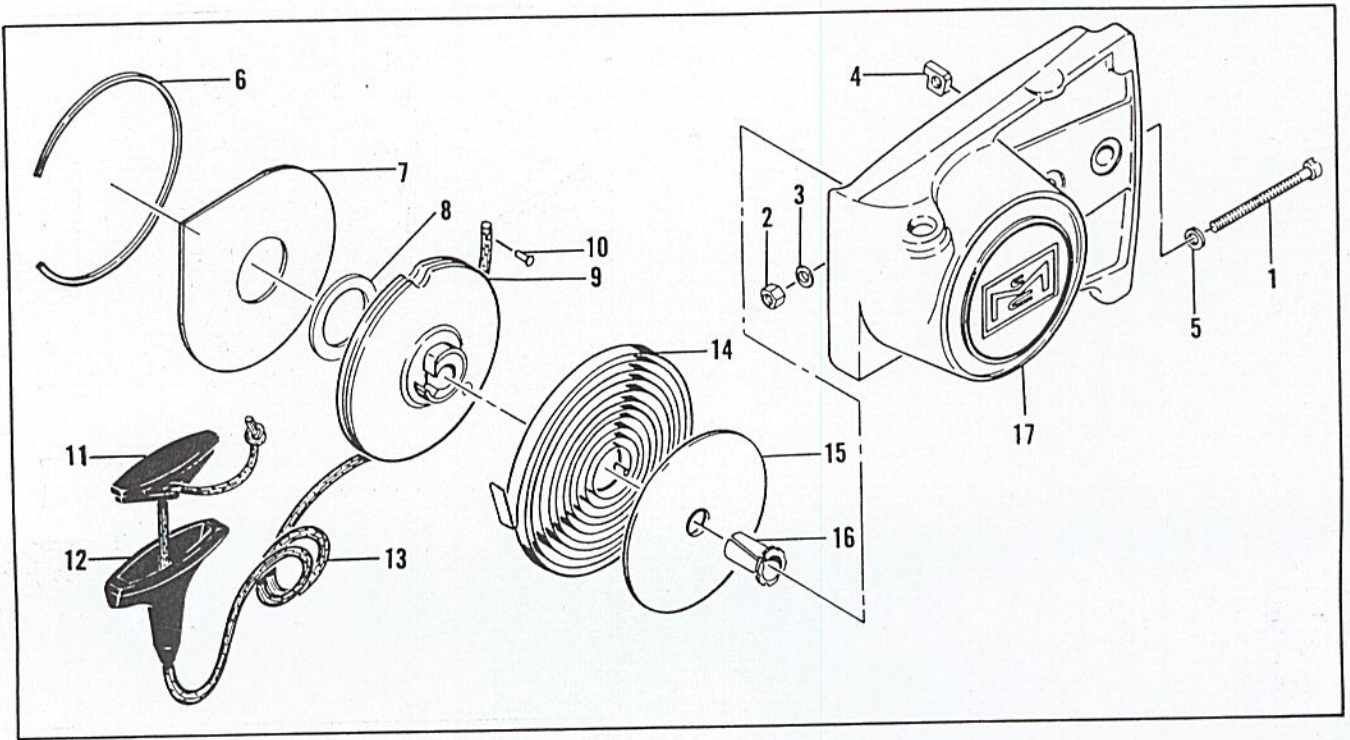


Figure 2. Clutch Guard and Starter Assembly

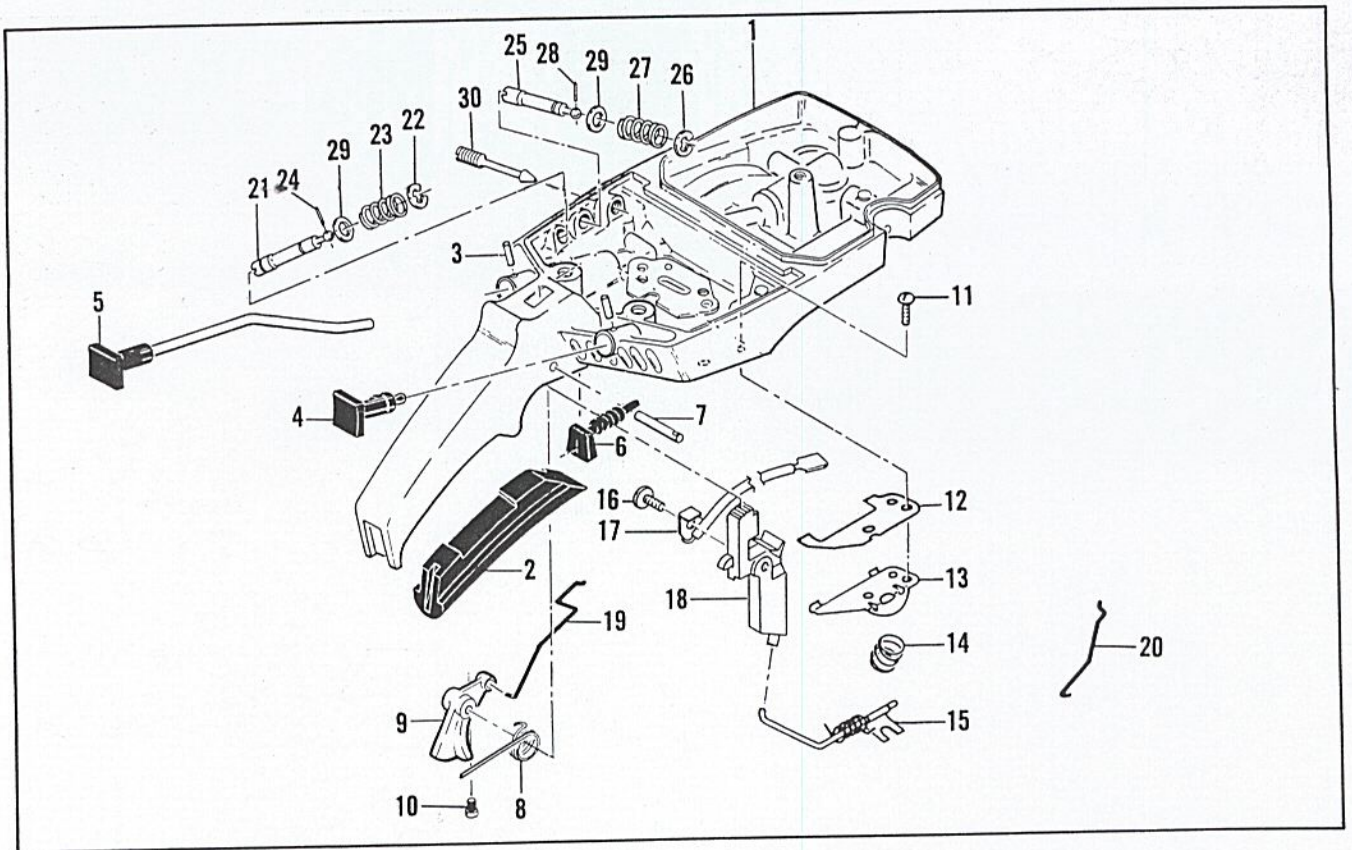


Figure 3. Fuel Tank Assembly

FIGURE 2. CLUTCH GUARD ASSEMBLY

| Item No. | Part Number | Description | Units Per Assy | Usable On Code |
|----------|-------------|-------------------------------|----------------|----------------|
| | 83850 | Clutch Guard Assy | 1 | All |
| 1 | 102144 | . Screw - Bar adjusting | 1 | All |
| 2 | 102067 | . Nut - Hex 10-24 | 1 | All |
| 3 | 110387 | . Washer - Wavey | 1 | All |
| 4 | 61705 | . Nut - Bar adjusting | 1 | All |
| 5 | 110264 | . Washer - #10 | 1 | All |
| 6 | 67205 | . Retainer - Shield | 1 | All |
| 7 | 63985 | . Shield - Dust | 1 | All |
| 8 | 63986 | . Washer - Thrust | 1 | All |
| 9 | 83651 | . Drum - Starter | 1 | All |
| 10 | 110470 | . Rivet - Rope | 1 | All |
| 11 | 62191A | . Insert - Handle | 1 | All |
| 12 | 62190A | . Handle - Starter | 1 | All |
| 13 | 69964 | . Rope - Starter | 1 | All |
| 14 | 68626 | . Spring - Rewind | 1 | All |
| 15 | 63987 | . Shield - Spring | 1 | All |
| 16 | 61635A | . Bushing - Nyliner | 1 | All |
| 17 | 83569 | . Guard - Clutch | 1 | All |

MAC 5-10A Usable On Code

| Letter | A | B | C |
|----------------|----------------|-------------|--------------|
| Serial Numbers | Without Prefix | Prefixed 1- | Prefixed 10- |

FIGURE 3. FUEL TANK ASSEMBLY

| Item No. | Part Number | Description | Units Per Assy | Usable On Code |
|----------|-------------|--|----------------|----------------|
| 1 | 66649 | Fuel Tank Assy | 1 | A,B |
| | 84183 | Fuel Tank Assy | 1 | C |
| 2 | 64872 | Grip - Handle | 1 | All |
| 3 | 105673 | Pin - Roll 3/32 x 9/16 | 2 | All |
| 4 | 66194 | Button - Primer | 1 | A,B |
| | 68517 | Button - Choke | 1 | C |
| 5 | 64871 | Button & Rod Assy - Oiler | 1 | All |
| 6 | 67989 | Seal - Throttle rod | 1 | All |
| 7 | 110378 | Pin - Roll 3/16 x 15/16 | 1 | All |
| 8 | 65734 | Spring - Throttle return | 1 | All |
| 9 | 67224 | Trigger | 1 | All |
| 10 | 110537 | Screw - Fil hd 8-36 x 1/2 | 1 | C |
| 11 | 105249 | Screw - Rd hd 8-32 x 3/8 (SEMS) | 2 | All |
| 12 | 64621 | Shield - Bracket | 1 | All |
| 13 | 64721 | Bracket - Lever | 1 | All |
| 14 | 69687 | Spring - Valve | 1 | All |
| 15 | 69811 | Lever Assy - DSP | 1 | All |
| 16 | 110469 | Screw - Pan hd 8-32 x 5/16 s/t | 1 | All |
| 17 | 65873 | Wire Assy - Stop switch | 1 | All |
| 18 | 67210 | Button Assy - Control | 1 | All |
| 19 | 66156 | Rod - Throttle | 1 | A,B |
| | 68170 | Rod - Throttle | 1 | C |
| 20 | 67355 | Rod - Choke | 1 | C |
| 21 | 68102 | Extension Assy - High speed needle | 1 | C |
| 22 | 110512 | . Ring - Retaining | 1 | C |
| 23 | 67363 | . Spring | 1 | C |
| 24 | 110509 | . Pin - Groove | 1 | C |
| 25 | 68101 | Extension Assy - Idle needle | 1 | C |
| 26 | 110512 | . Ring - Retaining | 1 | C |
| 27 | 67363 | . Spring | 1 | C |
| 28 | 110509 | . Pin - Groove | 1 | C |
| 29 | 67292 | Washer - Special | 2 | C |
| 30 | 67271 | Screw - Idle adjustment | 1 | C |

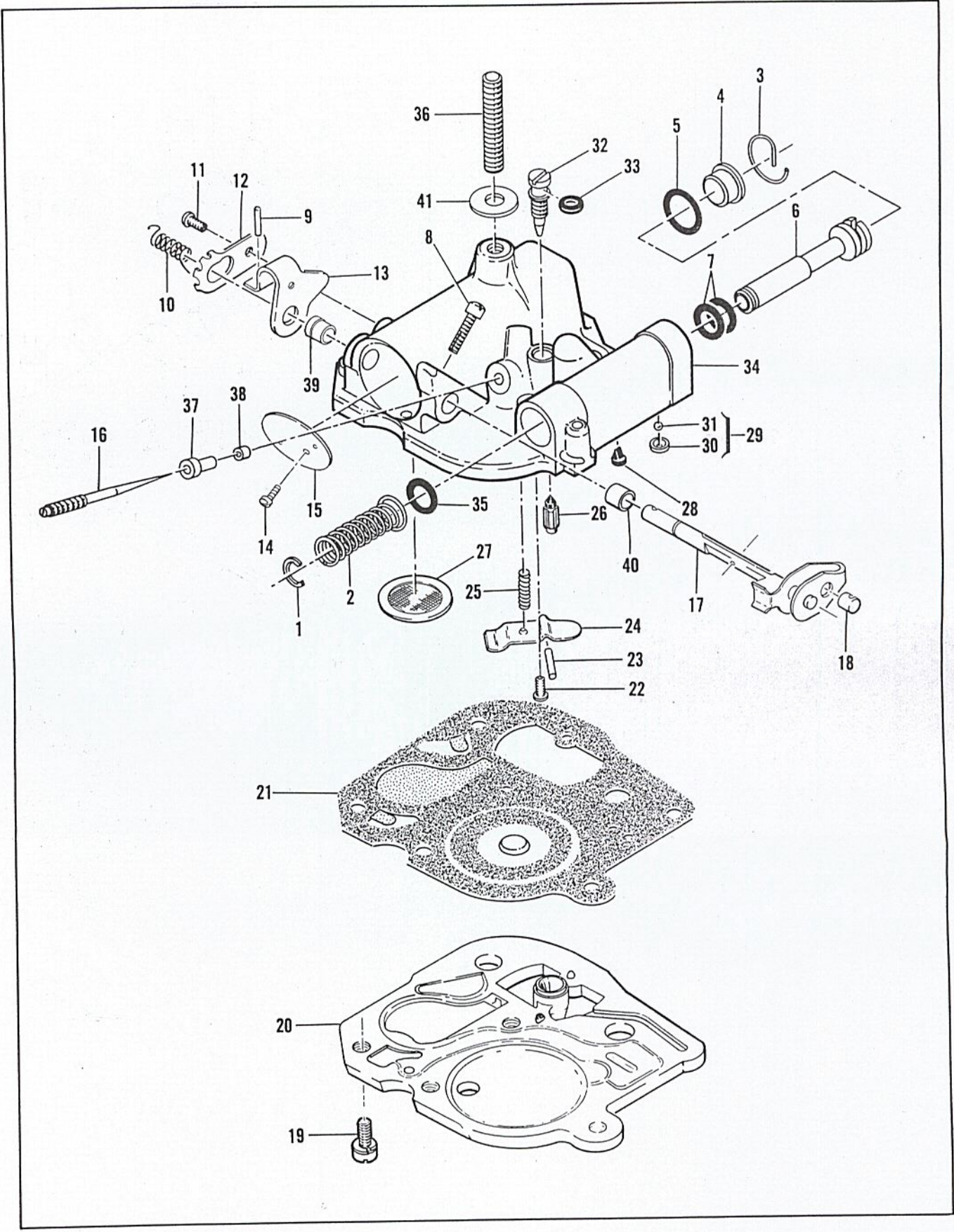


Figure 4. Carburetor Assembly

FIGURE 4. CARBURETOR ASSEMBLY

| Item No. | Part Number | Description | Units Per Assy | Usable On Code | | | | | | | | |
|---|----------------|---|----------------|----------------|--------|---|---|---|----------------|----------------|-------------|--------------|
| MAC 5-10A Usable On Code | | | | | | | | | | | | |
| <table border="1"> <thead> <tr> <th>Letter</th> <th>A</th> <th>B</th> <th>C</th> </tr> </thead> <tbody> <tr> <td>Serial Numbers</td> <td>Without Prefix</td> <td>Prefixed 1-</td> <td>Prefixed 10-</td> </tr> </tbody> </table> | | | | | Letter | A | B | C | Serial Numbers | Without Prefix | Prefixed 1- | Prefixed 10- |
| Letter | A | B | C | | | | | | | | | |
| Serial Numbers | Without Prefix | Prefixed 1- | Prefixed 10- | | | | | | | | | |
| | 66511 | Carburetor Assy (McCulloch Double Needle) | 1 | A,B | | | | | | | | |
| 1 | 101289 | . Ring - Retaining | 1 | A,B | | | | | | | | |
| 2 | 65859 | . Spring - Plunger | 1 | A,B | | | | | | | | |
| 3 | 65677 | . Retainer - Plug | 1 | A,B | | | | | | | | |
| 4 | 65617 | . Plug - Primer | 1 | A,B | | | | | | | | |
| 5 | 105617 | . "O" Ring | 1 | A,B | | | | | | | | |
| 6 | 66552 | . Plunger - Primer | 1 | A,B | | | | | | | | |
| 7 | 66551 | . "O" Ring | 2 | A,B | | | | | | | | |
| 8 | 110483 | . Screw - Long locking | 1 | A,B | | | | | | | | |
| 9 | 104245 | . Pin - Roll .062 x 1/2 | 1 | A,B | | | | | | | | |
| 10 | 62939A | . Spring - Idle governor | 1 | A,B | | | | | | | | |
| 11 | 103934 | . Screw - Rd hd 6-32 x 1/4 (SEMS)..... | 1 | A,B | | | | | | | | |
| 12 | 62938 | . Clip - Throttle shaft | 1 | A,B | | | | | | | | |
| 13 | 62343A | . Lever - Throttle | 1 | A,B | | | | | | | | |
| 14 | 104814 | . Screw - Pan hd 4-40 x 1/4 (SEMS) | 1 | A,B | | | | | | | | |
| 15 | 62290A | . Plate - Throttle | 1 | A,B | | | | | | | | |
| 16 | 65431 | . Needle - Metering | 1 | A,B | | | | | | | | |
| 17 | 62291A | . Shaft Assy - Throttle | 1 | A,B | | | | | | | | |
| 18 | 62975 | . Swivel - Needle | 1 | A,B | | | | | | | | |
| 19 | 110397 | . Screw - Pan hd 8-32 x 7/16 (SEMS) | 4 | A,B | | | | | | | | |
| 20 | 66507 | . Plate - Carburetor base | 1 | A,B | | | | | | | | |
| 21 | 65608 | . Diaphragm Assy - Pump | 1 | A,B | | | | | | | | |
| 22 | 104728 | . Screw - Bind hd 6-32 x 1/4 | 1 | A,B | | | | | | | | |
| 23 | 110337 | . Pin - Inlet lever | 1 | A,B | | | | | | | | |
| 24 | 62310 | . Lever - Inlet | 1 | A,B | | | | | | | | |
| 25 | 62923A | . Spring - Inlet lever | 1 | A,B | | | | | | | | |
| 26 | 63038 | . Valve - Inlet needle | 1 | A,B | | | | | | | | |
| 27 | 55690B | . Seal - Capillary | 1 | A,B | | | | | | | | |
| 28 | 63041 | . Valve - Primer | 1 | A,B | | | | | | | | |
| 29 | 65868 | . Set - Ball and seat | 1 | A,B | | | | | | | | |
| 30 | 66153 | . . Seat | 1 | A,B | | | | | | | | |
| 31 | 61151 | . . Ball | 1 | A,B | | | | | | | | |
| 32 | 65445 | . Needle - Main fuel | 1 | A,B | | | | | | | | |
| 33 | 104001 | . "O" Ring | 1 | A,B | | | | | | | | |
| 34 | 66512 | . Body Assy - Carburetor | 1 | A,B | | | | | | | | |
| 35 | 59796 | . . "O" Ring | 1 | A,B | | | | | | | | |
| 36 | 65724 | . . Stud - Carburetor | 1 | A,B | | | | | | | | |
| 37 | 66158 | . . Orifice - Air | 1 | A,B | | | | | | | | |
| 38 | 66569 | . . Orifice - Fuel | 1 | A,B | | | | | | | | |
| 39 | 62288A | . . Bushing - Throttle shaft | 1 | A,B | | | | | | | | |
| 40 | 62368 | . . Bushing - Throttle shaft | 1 | A,B | | | | | | | | |
| 41 | 67062 | Seal - Carburetor stud | 1 | A,B | | | | | | | | |

McCULLOCH DOUBLE NEEDLE CARBURETOR ADJUSTMENT

1. Turn Lo Speed screw counterclockwise until it no longer touches stop and butterfly can be completely closed.
2. Hold finger against closed butterfly and turn Lo Mix needle clockwise until butterfly starts to open. Turn the needle counterclockwise two and one half turns.
3. Hold finger against closed butterfly and turn Lo Speed screw clockwise until butterfly starts to open. Turn the screw clockwise one half turn more.
4. Turn Hi Mix needle clockwise until resistance is felt, then turn the needle counterclockwise two full turns.
5. Turn the Lo Mix needle to obtain smooth rapid acceleration every time without faltering. Check for smooth idle for all positions of the saw and readjust the Lo Mix needle if necessary.
6. Adjust Hi Mix needle for maximum power under load. Turn the needle in for leaner and out for richer mixture. Do not adjust the needle for leaner mixture than necessary to obtain smooth, even running under a cutting load.

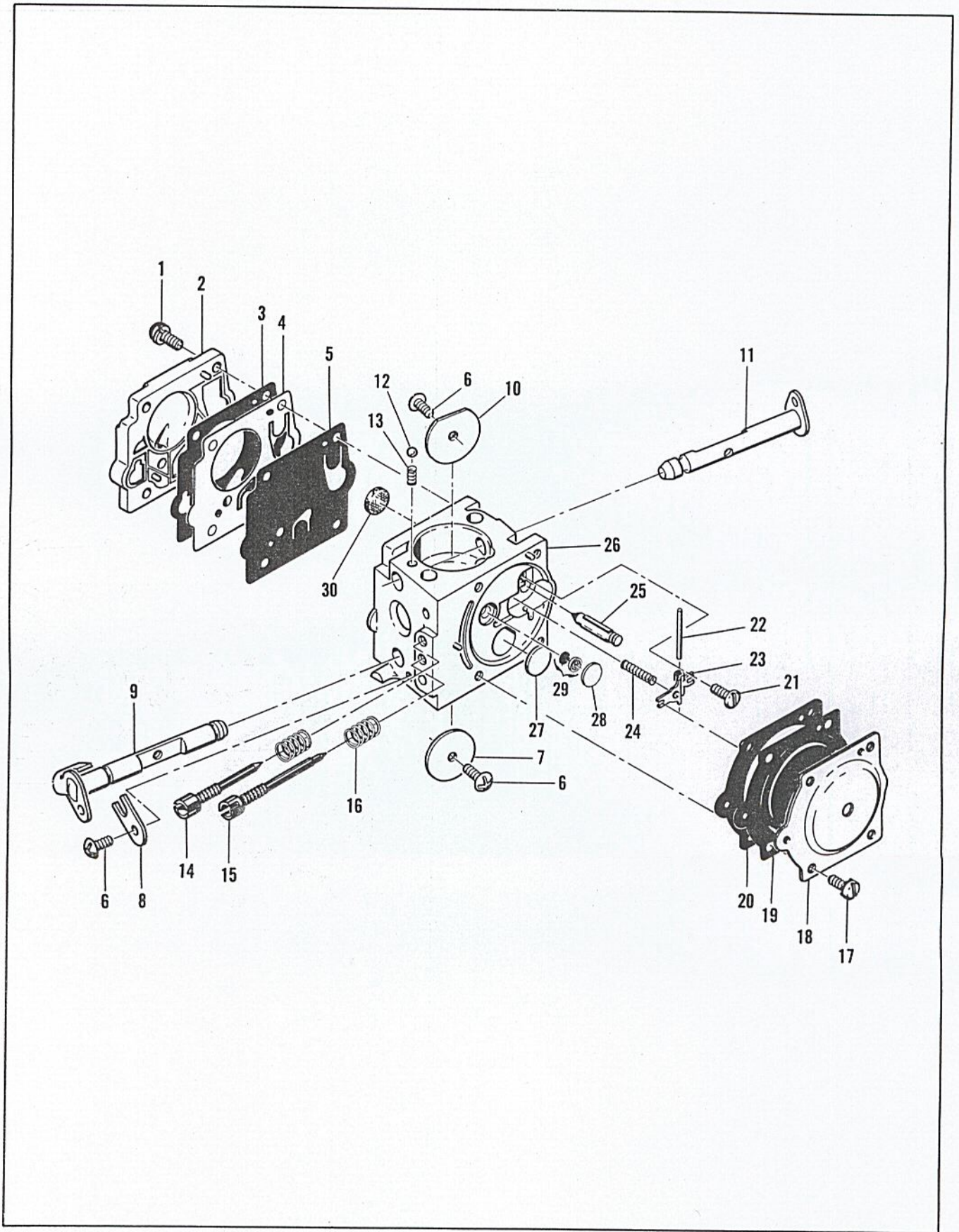


Figure 5. Carburetor Assembly

FIGURE 5. CARBURETOR ASSEMBLY

| Item No. | Part Number | Description | Units Per Assy | Usable On Code | | | | | | | | |
|---|----------------|---|----------------|----------------|--------|---|---|---|----------------|----------------|-------------|--------------|
| MAC 5-10A Usable On Code | | | | | | | | | | | | |
| <table border="1" style="width: 100%; border-collapse: collapse;"> <thead> <tr> <th style="width: 25%;">Letter</th> <th style="width: 25%;">A</th> <th style="width: 25%;">B</th> <th style="width: 25%;">C</th> </tr> </thead> <tbody> <tr> <td>Serial Numbers</td> <td>Without Prefix</td> <td>Prefixed 1-</td> <td>Prefixed 10-</td> </tr> </tbody> </table> | | | | | Letter | A | B | C | Serial Numbers | Without Prefix | Prefixed 1- | Prefixed 10- |
| Letter | A | B | C | | | | | | | | | |
| Serial Numbers | Without Prefix | Prefixed 1- | Prefixed 10- | | | | | | | | | |
| | 67379 | Carburetor Assy (McCulloch SDC-2) | 1 | C | | | | | | | | |
| 1 | 67501 | . Screw - Pump cover | 4 | C | | | | | | | | |
| 2 | 83760 | . Cover - Pump | 1 | C | | | | | | | | |
| 3 | *67495 | . Gasket - Cover | 1 | C | | | | | | | | |
| 4 | *67498 | . Diaphragm - Check valve | 1 | C | | | | | | | | |
| 5 | *83114 | . Diaphragm - Fuel pump | 1 | C | | | | | | | | |
| 6 | *47690 | . Screw - Plate | 3 | C | | | | | | | | |
| 7 | 67487 | . Plate - Throttle | 1 | C | | | | | | | | |
| 8 | 67489 | . Clip - Shaft | 1 | C | | | | | | | | |
| 9 | 67486 | . Shaft Assy - Throttle | 1 | C | | | | | | | | |
| 10 | 67490 | . Plate - Choke | 1 | C | | | | | | | | |
| 11 | 67488 | . Shaft Assy - Choke | 1 | C | | | | | | | | |
| 12 | *100302 | . Ball - Choke friction | 1 | C | | | | | | | | |
| 13 | *67504 | . Spring - Choke | 1 | C | | | | | | | | |
| 14 | *67506 | . Needle - High speed | 1 | C | | | | | | | | |
| 15 | *67505 | . Needle - Idle | 1 | C | | | | | | | | |
| 16 | *67502 | . Spring - Needle | 2 | C | | | | | | | | |
| 17 | 70798 | . Screw - Diaphragm cover | 4 | C | | | | | | | | |
| 18 | 83761 | . Cover - Diaphragm | 1 | C | | | | | | | | |
| 19 | *67499 | . Diaphragm - Metering | 1 | C | | | | | | | | |
| 20 | *67496 | . Gasket - Diaphragm | 1 | C | | | | | | | | |
| 21 | *67500 | . Screw - Lever pin | 1 | C | | | | | | | | |
| 22 | *67508 | . Pin - Lever | 1 | C | | | | | | | | |
| 23 | *67509 | . Lever - Metering | 1 | C | | | | | | | | |
| 24 | *67503 | . Spring - Lever | 1 | C | | | | | | | | |
| 25 | *67491 | . Valve - Needle | 1 | C | | | | | | | | |
| 26 | 67483 | . Body Assy - Carburetor | 1 | C | | | | | | | | |
| 27 | *71690 | . . Plug - 3/8 | 1 | C | | | | | | | | |
| 28 | *69506 | . . Plug - 5/16 | 1 | C | | | | | | | | |
| 29 | 83758 | . . Kit - Valve & Seat Assy | | C | | | | | | | | |
| 30 | *67507 | . . Screen - Fuel | 1 | C | | | | | | | | |
| | *67482 | Gasket Set | | | | | | | | | | |
| | 67481 | Repair Kit | | | | | | | | | | |

*Indicates parts included in Repair Kit, P/N 67481

McCULLOCH SDC-2 CARBURETOR ADJUSTMENT

1. Carefully turn both the high speed and idle needles clockwise until resistance is felt, then turn both needles counterclockwise one full turn.
2. With engine warmed up, adjust the idle speed screw in or out until the engine idles just below clutch engagement speed.
3. Adjust the idle mixture needle in or out (leaner or richer) to obtain smooth, rapid acceleration every time without faltering. If necessary, readjust the idle speed screw.
4. Adjust the high speed mixture needle for maximum power under load. Turn the needle in for leaner and out for richer mixture. Do not use any leaner setting than necessary to obtain smooth, even running when cutting wood.

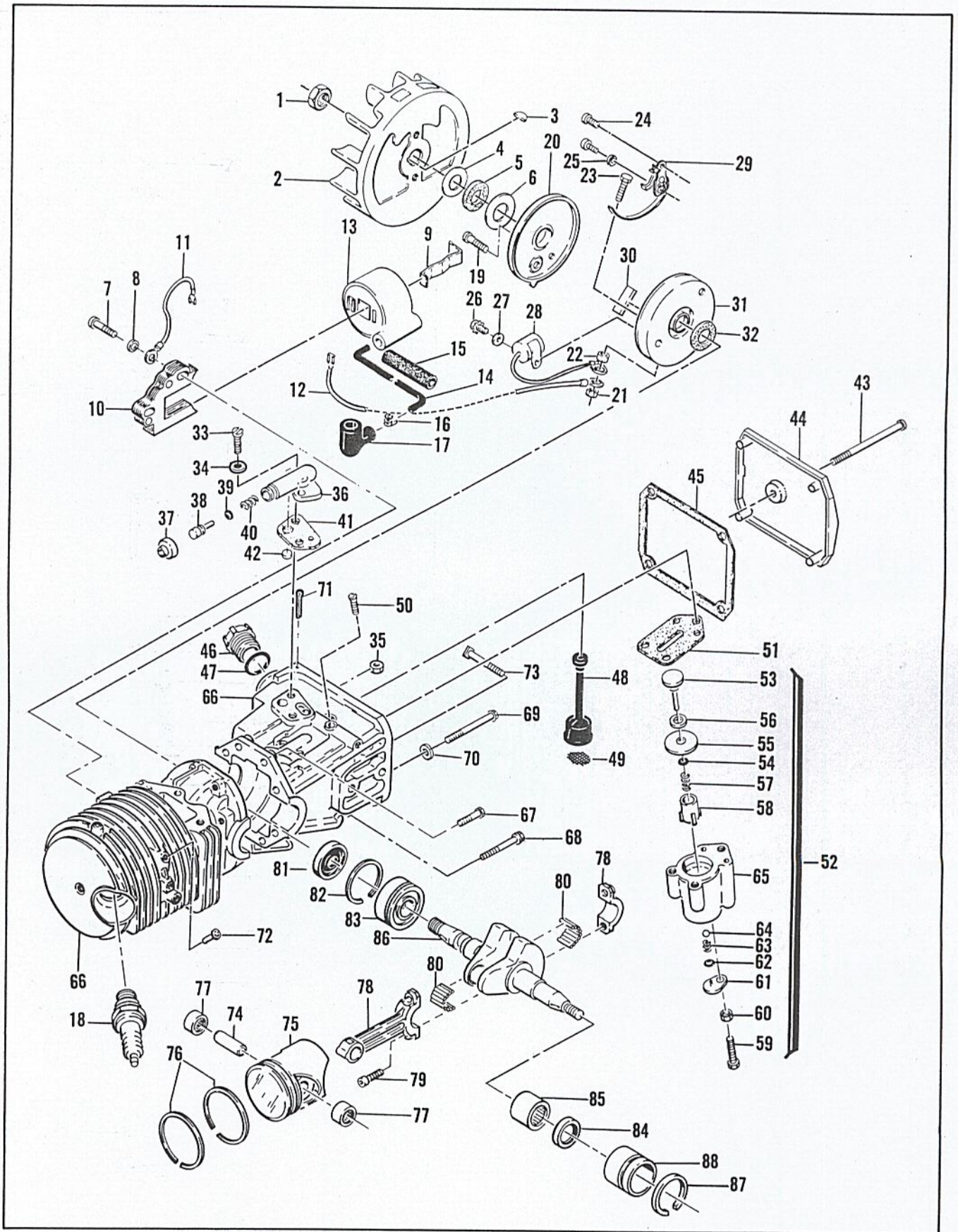


Figure 6. Powerhead Assembly

FIGURE 6. POWERHEAD ASSEMBLY

| Item No. | Part Number | Description | Units Per Assy | Usable On Code | | | | | | | | |
|---|----------------|---|----------------|----------------|--------|---|---|---|----------------|----------------|-------------|--------------|
| MAC 5-10A Usable On Code | | | | | | | | | | | | |
| <table border="1" style="width: 100%; border-collapse: collapse;"> <thead> <tr> <th style="width: 25%;">Letter</th> <th style="width: 25%;">A</th> <th style="width: 25%;">B</th> <th style="width: 25%;">C</th> </tr> </thead> <tbody> <tr> <td>Serial Numbers</td> <td>Without Prefix</td> <td>Prefixed 1-</td> <td>Prefixed 10-</td> </tr> </tbody> </table> | | | | | Letter | A | B | C | Serial Numbers | Without Prefix | Prefixed 1- | Prefixed 10- |
| Letter | A | B | C | | | | | | | | | |
| Serial Numbers | Without Prefix | Prefixed 1- | Prefixed 10- | | | | | | | | | |
| 1 | 101391 | Nut - Hex 3/8-24 | 1 | All | | | | | | | | |
| 2 | 84681 | Flywheel Assy | 1 | All | | | | | | | | |
| 3 | 103879 | Key - Woodruff | 1 | All | | | | | | | | |
| 4 | 67057 | Washer - Thrust | 1 | C | | | | | | | | |
| 5 | 67056 | Seal | 1 | C | | | | | | | | |
| 6 | 67054 | Washer - Thrust | 1 | C | | | | | | | | |
| 7 | 101965 | Screw - Fil hd 10-24 x 7/8 (SEMS) | 2 | All | | | | | | | | |
| 8 | 100003 | Washer - #10 | 2 | All | | | | | | | | |
| 9 | 51253 | Retainer - Coil | 1 | All | | | | | | | | |
| 10 | 62741 | Lamination Assy | 1 | All | | | | | | | | |
| 11 | 62819 | Wire Assy - Ground | 1 | All | | | | | | | | |
| 12 | 69344 | Wire Assy - Primary | 1 | All | | | | | | | | |
| 13 | 84972 | Coil & Terminal Assy | 1 | All | | | | | | | | |
| 14 | 69966 | . Wire Assy - Spark plug | 1 | All | | | | | | | | |
| 15 | 67127 | . . . Sleeve | 1 | All | | | | | | | | |
| 16 | 62932 | . . . Connector | 1 | All | | | | | | | | |
| 17 | 62926 | . . . Boot | 1 | All | | | | | | | | |
| 18 | 63432 | Spark Plug - AC CS42T | 1 | All | | | | | | | | |
| 19 | 110349 | Screw - Rd hd 8-32 x 3/4 | 1 | All | | | | | | | | |
| 20 | 62362 | Cover - Breaker box | 1 | All | | | | | | | | |
| 21 | 100298 | Nut - Hex 6-32 | 1 | All | | | | | | | | |
| 22 | 62365 | Spacer - Breaker screw | 1 | All | | | | | | | | |
| 23 | 110346 | Screw - Hex hd 6-32 x 3/4 | 1 | All | | | | | | | | |
| 24 | 100934 | Screw - Rd hd 8-32 x 3/8 | 2 | All | | | | | | | | |
| 25 | 105976 | Washer - #8 | 1 | All | | | | | | | | |
| 26 | 105249 | Screw - Rd hd 8-32 x 3/8 (SEMS) | 1 | All | | | | | | | | |
| 27 | 100080 | Washer - #8 | 1 | All | | | | | | | | |
| 28 | 61650 | Condenser | 1 | All | | | | | | | | |
| 29 | 62363 | Breaker Assy | 1 | All | | | | | | | | |
| 30 | 54184 | Wiper - Cam | 1 | All | | | | | | | | |
| 31 | 62361 | Box - Breaker | 1 | All | | | | | | | | |
| 32 | 67051 | Seal - Breaker box | 1 | C | | | | | | | | |
| 33 | 110623 | Screw - Fil hd 8-32 x 1/2 | 2 | All | | | | | | | | |
| 34 | 105976 | Washer - #8 | 2 | All | | | | | | | | |
| 35 | 100955 | Nut - Hex 8-32 | 1 | All | | | | | | | | |
| 36 | 84156 | Housing - Pump | 1 | All | | | | | | | | |
| 37 | 62262 | Cap - Housing | 1 | All | | | | | | | | |
| 38 | 62266 | Plunger - Pump | 1 | All | | | | | | | | |
| 39 | 101056 | "O" Ring | 1 | All | | | | | | | | |
| 40 | 66687 | Spring - Plunger | 1 | All | | | | | | | | |
| 41 | 62230 | Gasket - Pump | 1 | All | | | | | | | | |
| 42 | 62909 | Valve - Pump | 1 | All | | | | | | | | |
| 43 | 110291 | Screw - Pan hd 10-24 x 2-5/8 | 1 | All | | | | | | | | |
| 44 | 63072 | Cover - Oil tank | 1 | All | | | | | | | | |
| 45 | 62116 | Gasket - Cover | 1 | All | | | | | | | | |
| 46 | 57129A | Cap - Oil tank | 1 | All | | | | | | | | |
| 47 | 101148 | "O" Ring | 1 | All | | | | | | | | |
| 48 | 62123B | Hose Assy - Oil | 1 | All | | | | | | | | |
| 49 | 51506 | . Screen - Oil | 1 | All | | | | | | | | |
| 50 | 110333 | Screw - Oval hd 8-32 x 1/2 | 3 | All | | | | | | | | |
| 51 | 62274 | Gasket - Pulse pump | 1 | All | | | | | | | | |
| 52 | 83786 | Pump Assy - Pulse | 1 | All | | | | | | | | |
| 53 | 60260A | . Piston Assy - Pump | 1 | All | | | | | | | | |

FIGURE 6. POWERHEAD ASSEMBLY (Continued)

| Item No. | Part Number | Description | Units Per Assy | Usable On Code |
|----------|-------------|-------------------------------------|----------------|----------------|
| 54 | 104001 | . "O" Ring | 1 | All |
| 55 | 60263 | . Ring - Pump piston | 1 | All |
| 56 | 60937 | . Washer - Teflon | 1 | All |
| 57 | 60259 | . Spring - Piston | 1 | All |
| 58 | 62227 | . Sleeve - Adjustment | 1 | All |
| 59 | 110386 | . Screw - Hex hd 8-32 x 1 | 1 | All |
| 60 | 100251 | . Nut - Hex 8-32 | 1 | All |
| 61 | 63858 | . Cover - Outlet valve | 1 | All |
| 62 | 106104 | . "O" Ring | 1 | All |
| 63 | 62885A | . Spring - Outlet valve | 1 | All |
| 64 | 102809 | . Ball - Valve | 1 | All |
| 65 | 83787 | . Body Assy - Pump | 1 | All |
| 66 | 67354 | Crankcase Assy | 1 | All |
| 67 | 110288 | . Screw Assy | 2 | All |
| 68 | 110618 | . Screw Assy | 1 | All |
| 69 | 62105 | . Screw Assy - Sealing | 4 | All |
| 70 | 62842 | . Washer - Sealing | 4 | All |
| 71 | 100010 | . Pin - Cotter | 1 | All |
| 72 | 83137 | . Valve Assy - DSP | 1 | All |
| 73 | 62065 | Bolt - Bar mounting | 2 | All |
| 74 | 65389 | Pin - Piston | 1 | All |
| 75 | 69412 | Piston Assy | 1 | All |
| 76 | 63290 | . Ring Set - Piston | 1 | All |
| 77 | 103085 | . Bearing - Needle | 2 | All |
| 78 | 65401 | Connecting Rod Assy | 1 | All |
| 79 | 61627A | . Screw - Skt hd special | 2 | All |
| 80 | 63225 | . Roller - Needle (set of 20) | 1 | All |
| 81 | 61618 | Seal - Oil | 1 | All |
| 82 | 63464 | Ring - Snap | 1 | All |
| 83 | 63429B | Bearing - Ball | 1 | All |
| 84 | 110260 | Seal - Oil | 1 | All |
| 85 | 104357 | Bearing - Needle | 1 | All |
| 86 | 63336 | Crankshaft | 1 | All |
| 87 | 63699 | Ring - Bearing insert | 1 | All |
| 88 | 63701 | Insert - Bearing | 1 | All |

ACCESSORIES

| Part Number | Description |
|-------------|--|
| 69413 | Piston Assy - 0.020 in. oversize |
| 63291 | . Ring Set - Piston 0.020 in. oversize |
| 103512 | . Bearing - Needle (2) |
| 69414 | Piston Assy - 0.030 in. oversize |
| 63292 | . Ring Set - Piston 0.030 in. oversize |
| 103512 | . Bearing - Needle (2) |
| 63341A | Kit - Spike |
| 69058 | Kit - Wrap-around frame |
| 69191 | Kit - Pressure test adaptor |
| 65712 | Guide - Timing |
| 63097 | Spark Plug - AC CS 45 T |
| 65778 | Spark Plug - AC CS 41 T |
| 62827 | Wrench - Combination |
| 63746 | Scrench |
| 83434 | Owner's Manual |
| 63084 | Shop Manual |

40:1 TWO-CYCLE MOTOR OIL

Reduces smoke, carbon and engine wear.



6 oz. can #78960
 6-pack #78961
 16 oz. can #78963
 6-pack #78964
 1 qt. bottle #110626

CHAIN, BAR AND SPROCKET OIL

Specially designed for extra lubrication of bars and chains.



1 qt. bottle #110631
 Case of 24 #110632

BAR GUARDS

Protect bar and chain from accidental damage.



A (A) for wide bars #56927
 Black Polyvinylchloride
 B (B) narrow bars #64930



C (C) MAC 10 - 16, 20" #66544
 Rigid Yellow Plastic
 D (D) PM6 - 12, 16" #83124

LOCQUIC AND

Primer. Cleans, degreases, and accelerates curing.

7-1/2 oz. spray can. #69794



LOCTITE

Sealant, bonding agent

10cc plastic bottle



#67537

SPRAY PAINT

Black

12 oz. can #103503
 Case of 12 #103400

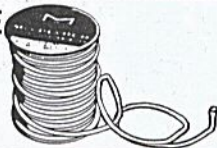


Yellow

12 oz. can #102449
 Case of 12 #102464

STARTER ROPE

Solid, braided nylon



100' spool

#36825

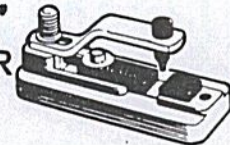
CHAIN SHARPENING TOOLS

The ● shows which tools are used on chains

| | | S-25 | SM-57 | S-40 | S-60 | S-90 |
|---|--|------|-------|------|------|------|
| McCULLOCH FILES 1/8" round 5/32" round 3/16" round 7/32" round 1/4" round 9/32" round 8" flat 6" flat safety | | ● | | | | |
| | | ● | | | | |
| | | ● | | | | |
| | | ● | | ● | | |
| | | ● | | | ● | |
| | | ● | | | | ● |
| FILE GUIDE & FILE #67750 (1/8" round) #60950 (7/32" round) (Also holds 3/16 and 1/4" round) | | ● | | | | |
| | | | | ● | | |
| | | | | | ● | |
| DEPTH GAUGE TOOLS #56241 .045-.060" #64198 .035-.060" #64359 .045-.050" #67688 .015-.020" #67680 .025-.030" | | | | | | |
| | | | | ● | ● | ● |
| | | | | ● | ● | ● |
| | | | | ● | ● | ● |
| | | | | ● | ● | ● |
| FILE-N-JOINT Assures correct filing angle, height. #61034 | | | | | | |
| | | ● | ● | ● | ● | ● |

"BREAK ALL" CHAIN BREAKER

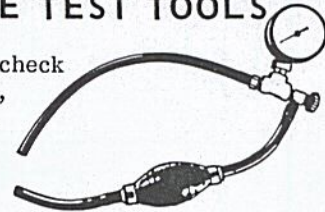
Required when repairing chain.



#61753
 Instructions included.

PRESSURE TEST TOOLS

For leakage check of crankcase, fuel system.



Basic unit #62849