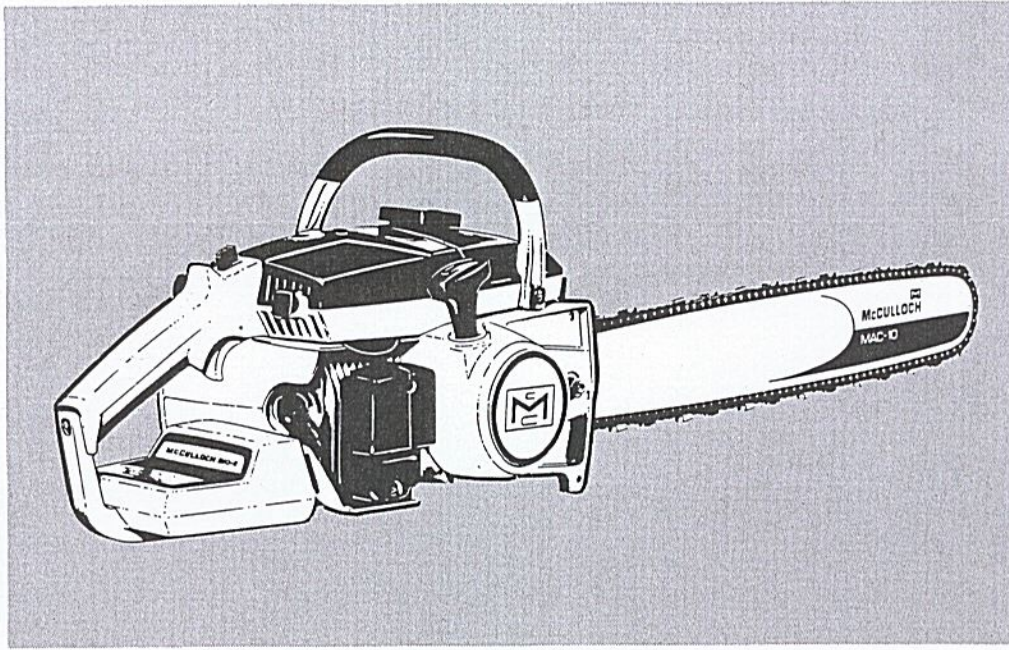


# MAC 5-10 E Chain Saw

## ILLUSTRATED PARTS LIST



September 1966

The following pages contain item-numbered illustrations of the service parts for this saw. Facing each illustration are lists which give the description and the quantity of each service part.

Part numbers will be found on the appropriate parts list sheet covering the serial number block of the particular saw. Locate the figure and item in this book, of the part in which you are interested. Then turn to the appropriate parts list sheet and following the figure and item number will be found the correct part number of the service part.

When changes in this parts list occur, either in the illustrations, in part numbers or in quantities used, these differences will be explained or shown on a superseding parts list sheet.

	Page
Figure 1. Engine Exploded View - General	2
Figure 2. Clutch Guard & Starter Assembly	4
Figure 3. Fuel Tank Assembly	4
Figure 4. Carburetor Assembly	6
Figure 5. Electrical Components	8
Figure 6. Powerhead Assembly	10



# McCULLOCH

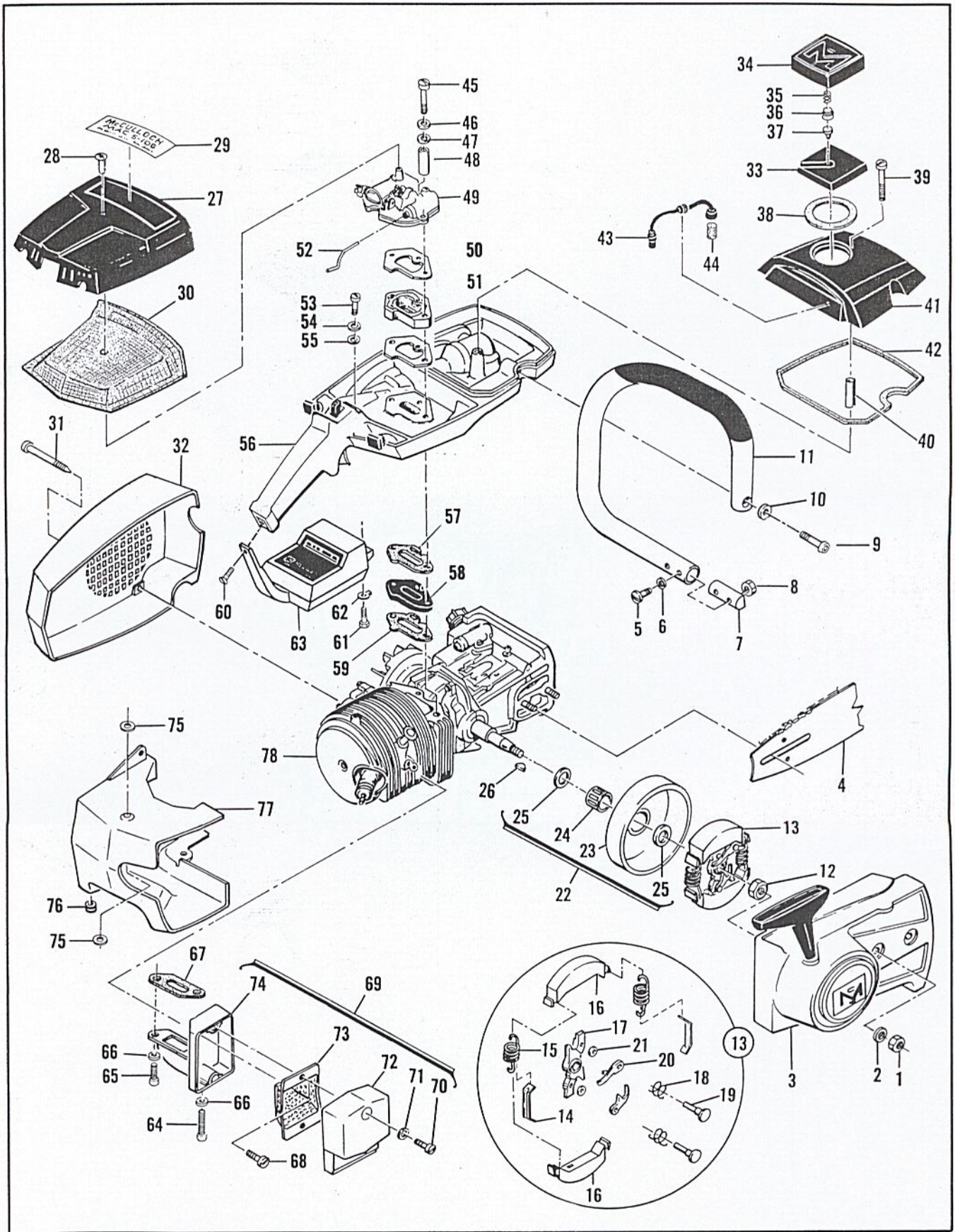


Figure 1. Engine Exploded View-General

FIGURE 1. ENGINE EXPLODED VIEW-GENERAL

Item No.	Description	Units Per Assy
1	Nut - Hex 5/16-24	2
2	Washer - 5/16	2
3	Clutch Guard and Starter Assy (See Figure 2)	1
4	Bar and Chain Assy (See Figure 6)	1
5	Screw - Hex hd 10-24 x 7/8	2
6	Washer - #10	2
7	Plug - Nut retainer	1
8	Nut - Hex 10-24	2
9	Screw - Skt hd 1/4-20 x 1-1/8	1
10	Washer - 1/4	1
11	Frame and Grip Assy	1
12	Nut - Flexloc 3/8-24	1
13	Clutch Assy	1
14	. Retainer - Clutch spring	2
15	. Spring - Clutch	2
16	. Shoe - Clutch	2
17	. Rotor Assy - Clutch	1
18	. . Spring - Pawl	2
19	. . Rivet - Pawl	2
20	. . Pawl - Starter	2
21	. . Washer - Special	2
22	Kit - Sprocket, Drum and Bearing Assy	1
23	. Sprocket and Drum Assy (7-tooth spkt)	1
24	. Bearing - Sprocket drum	1
25	. Shim - Sprocket	2
26	Key - Woodruff	1
27	Cover Assy - Air cleaner	1
28	. Nut - Air cleaner cover	1
29	Nameplate - MAC 5-10E	1
30	Screen - Air cleaner	1
31	Screw - Special	3
32	Fan Housing	1
33	Cap Assy - Fuel	1
34	. Cover - Fuel cap	1
35	. Spring	1
36	. Guide - Spring	1
37	. Valve	1
38	. Gasket	1
39	Screw - Oval hd 12-24 x 2-3/8	1

Item No.	Description	Units Per Assy
40	Spacer	1
41	Cover - Fuel tank	1
42	Gasket - Fuel tank cover	1
43	Hose Assy - Fuel	1
44	. Filter - Fuel	1
45	Screw - Hex hd 10-24 x 2-1/8	2
46	Washer - #10	2
47	Washer - Insulator	2
48	Sleeve - Insulator	2
49	Carburetor Assy (See Figure 4)	1
50	Gasket - Carburetor	2
51	Insulator - Carburetor	1
52	Rod - Primer	1
53	Screw - Hex hd 10-24 x 1-1/8	1
54	Washer - #10	1
55	Washer - Insulator	1
56	Fuel Tank Assy (See Figure 3)	1
57	Gasket - Fuel tank	2
58	Insulator - Fuel tank	1
59	Gasket - Fuel tank	1
60	Screw - Oval hd 10-24 x 5/8	1
61	Screw - Hex hd 10-24 x 1-5/8	1
62	Plate - Lock	1
63	Handle, Brace and Battery Assys (See Figure 5)	1
64	Screw - Skt 10-24 x 1-3/8	1
65	Screw - Skt 10-24 x 1/2	1
66	Washer - #10	2
67	Gasket - Spark arrester	1
68	Screw - Hex hd 10-24 x 1/2	1
69	Spark Arrester Assy	1
70	. Screw - Fil hd 10-24 x 1-1/8	2
71	. Washer - #10	4
72	. Cover Assy - Spark arrester	1
73	. Baffle - Spark arrester	1
74	. Body and Duct Assy - Spark arrester	1
75	Insulator - Shroud	2
76	Grommet - Shroud	1
77	Shroud - Cylinder	1
78	Powerhead Assy (See Figure 6)	1

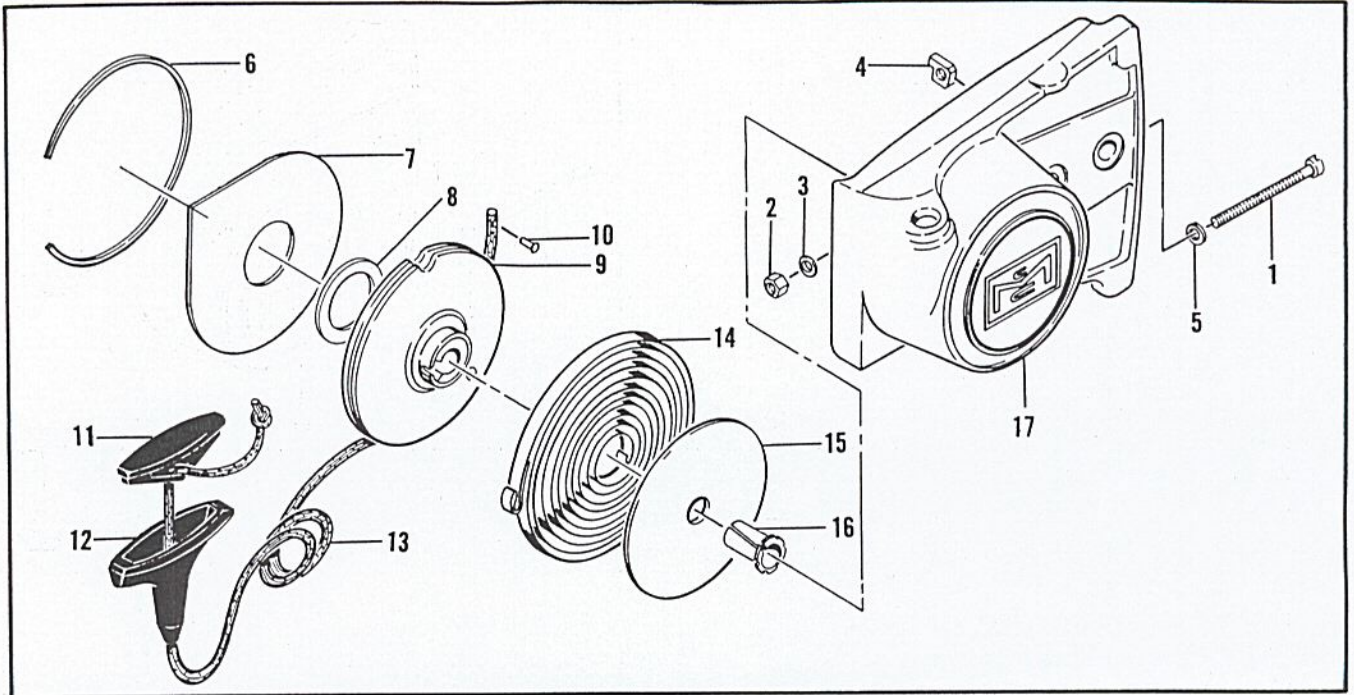


Figure 2. Clutch Guard and Starter Assembly

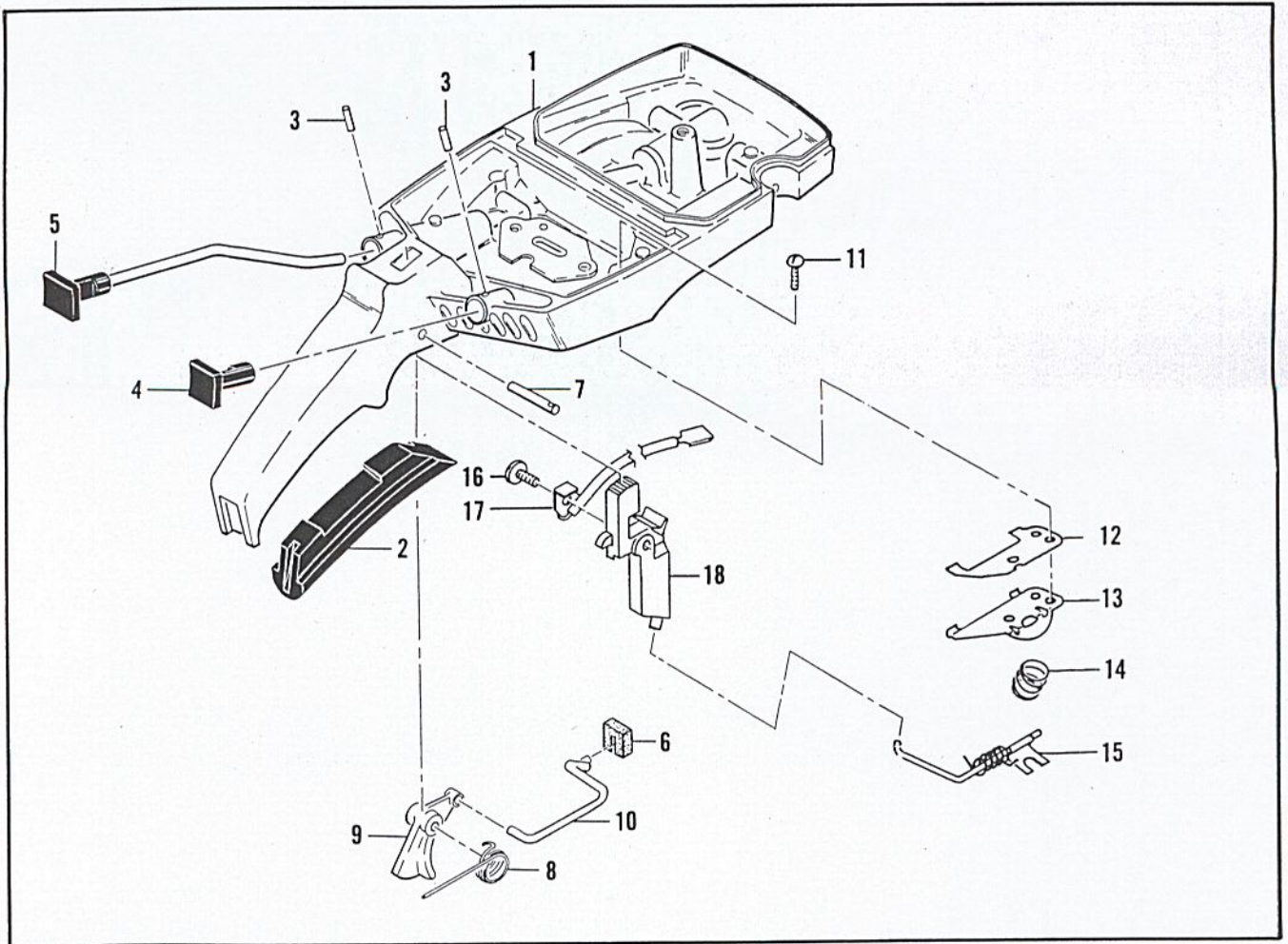


Figure 3. Fuel Tank Assembly

FIGURE 2. CLUTCH GUARD AND STARTER ASSEMBLY

Item No.	Description	Units Per Assy
	Clutch Guard Assy	1
1	. Screw - Bar adjusting	1
2	. Nut - Hex #10 lock	1
3	. Washer - Wave	1
4	. Nut - Bar adjusting	1
5	. Washer - #10	1
6	. Retainer - Shield	1
7	. Shield - Dust	1
8	. Washer - Thrust	1

Item No.	Description	Units Per Assy
9	. Drum - Starter	1
10	. Rivet - Starter rope	1
11	. Insert - Starter rope	1
12	. Handle - Starter	1
13	. Rope - Starter	1
14	. Spring - Starter rewind	1
15	. Shield - Starter spring	1
16	. Bushing - Nyliner	1
17	. Guard - Clutch	1

FIGURE 3. FUEL TANK ASSEMBLY

Item No.	Description	Units Per Assy
1	Fuel Tank Assy	1
2	. Grip - Handle	1
3	. Roll Pin - 3/32 x 9/16	2
4	. Button - Primer	1
5	. Button and Rod Assy - Oiler	1
6	. Seal - Throttle rod	1
7	. Roll Pin - 3/16 x 15/16	1
8	. Spring - Throttle return	1
9	. Trigger - Throttle	1

Item No.	Description	Units Per Assy
10	. Rod - Throttle	1
11	Screw - Rd hd 8-32 x 3/8 (SEMS)	2
12	Shield	1
13	Bracket - Lever Assy	1
14	Spring - Valve	1
15	Lever Assy - Compression release	1
16	Screw - Pan hd 8-32 x 5/16	1
17	Wire Assy - Stop switch	1
18	Button Assy - Starter	1

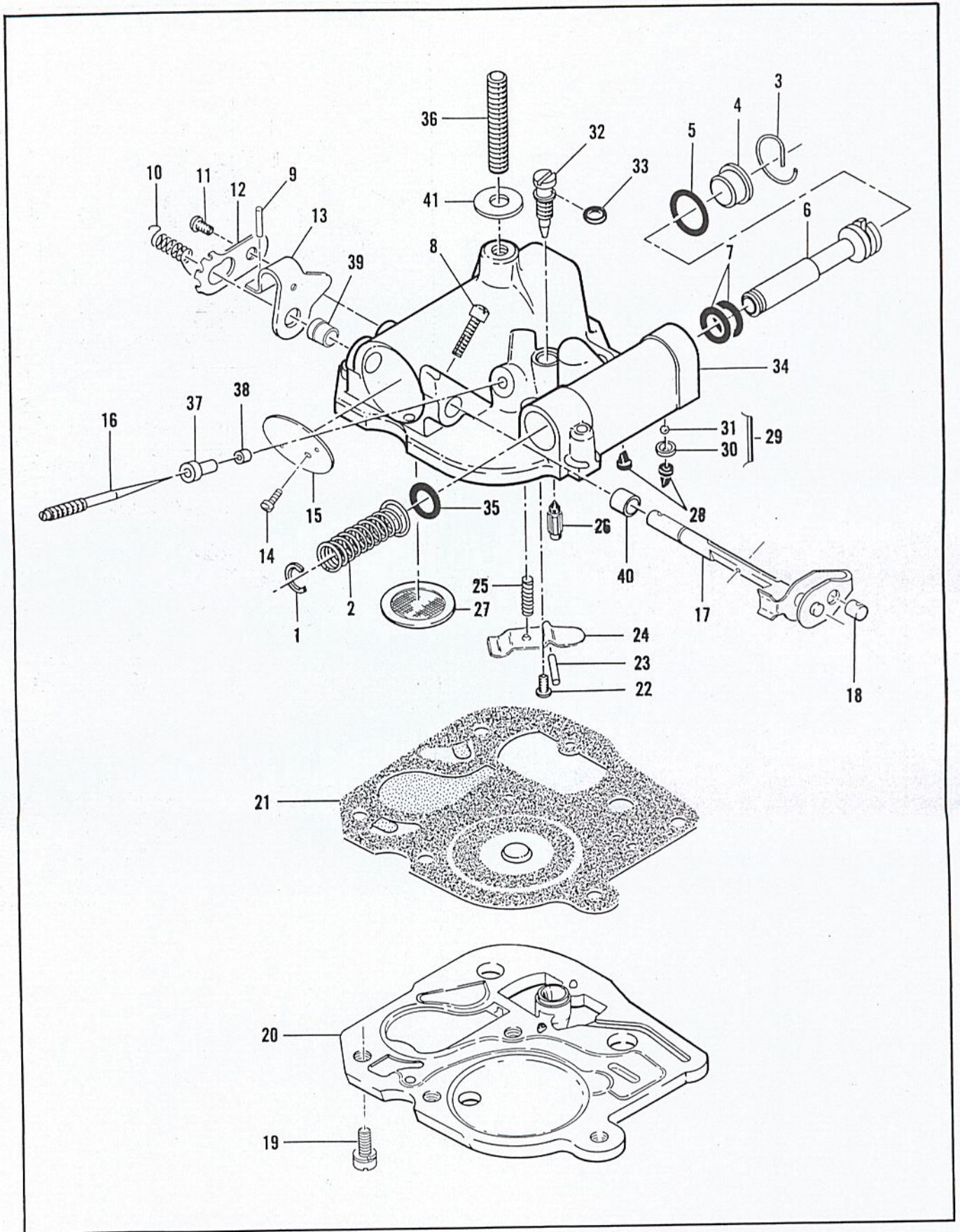


Figure 4. Carburetor Assembly

FIGURE 4. CARBURETOR ASSEMBLY

Item No.	Description	Units Per Assy
	Carburetor Assy	1
1	. Ring - Retaining	1
2	. Spring - Plunger	1
3	. Retainer - Plug	1
4	. Plug - Primer	1
5	. "O" Ring	1
6	. Plunger - Primer	1
7	. "O" Ring	2
8	. Screw - Adjustment	1
9	. Roll Pin - .062 x 1/2	1
10	. Spring - Idle governor	1
11	. Screw - Rd hd 6-32 x 1/4	1
12	. Clip - Throttle shaft	1
13	. Lever - Throttle	1
14	. Screw - Pan hd 4-40 x 1/4 (SEMS)	1
15	. Plate - Throttle	1
16	. Needle - Metering	1
17	. Shaft Assy - Throttle	1
18	. Swivel - Needle	1
19	. Screw - Pan hd 8-32 x 7/16 (SEMS)	4
20	. Plate - Carburetor base	1

Item No.	Description	Units Per Assy
21	. Diaphragm Assy - Pump	1
22	. Screw - 6-32 x 1/4	1
23	. Pin - Inlet lever	1
24	. Lever - Inlet	1
25	. Spring - Inlet lever	1
26	. Valve - Inlet needle	1
27	. Seal - Capillary	1
28	. Valve - Primer	2
29	. Set - Ball and seat	1
30	. . Seat	1
31	. . Ball	1
32	. Needle - Main fuel	1
33	. "O" Ring	1
34	. Body Assy - Carburetor	1
35	. . "O" Ring	1
36	. . Stud - Carburetor	1
37	. . Orifice - Air	1
38	. . Orifice - Fuel	1
39	. . Bushing - Throttle shaft	1
40	. . Bushing - Throttle shaft	1
41	Seal - Air cleaner stud	1

Wire continuity shown by letters.  
Match A-A, B-B, etc.

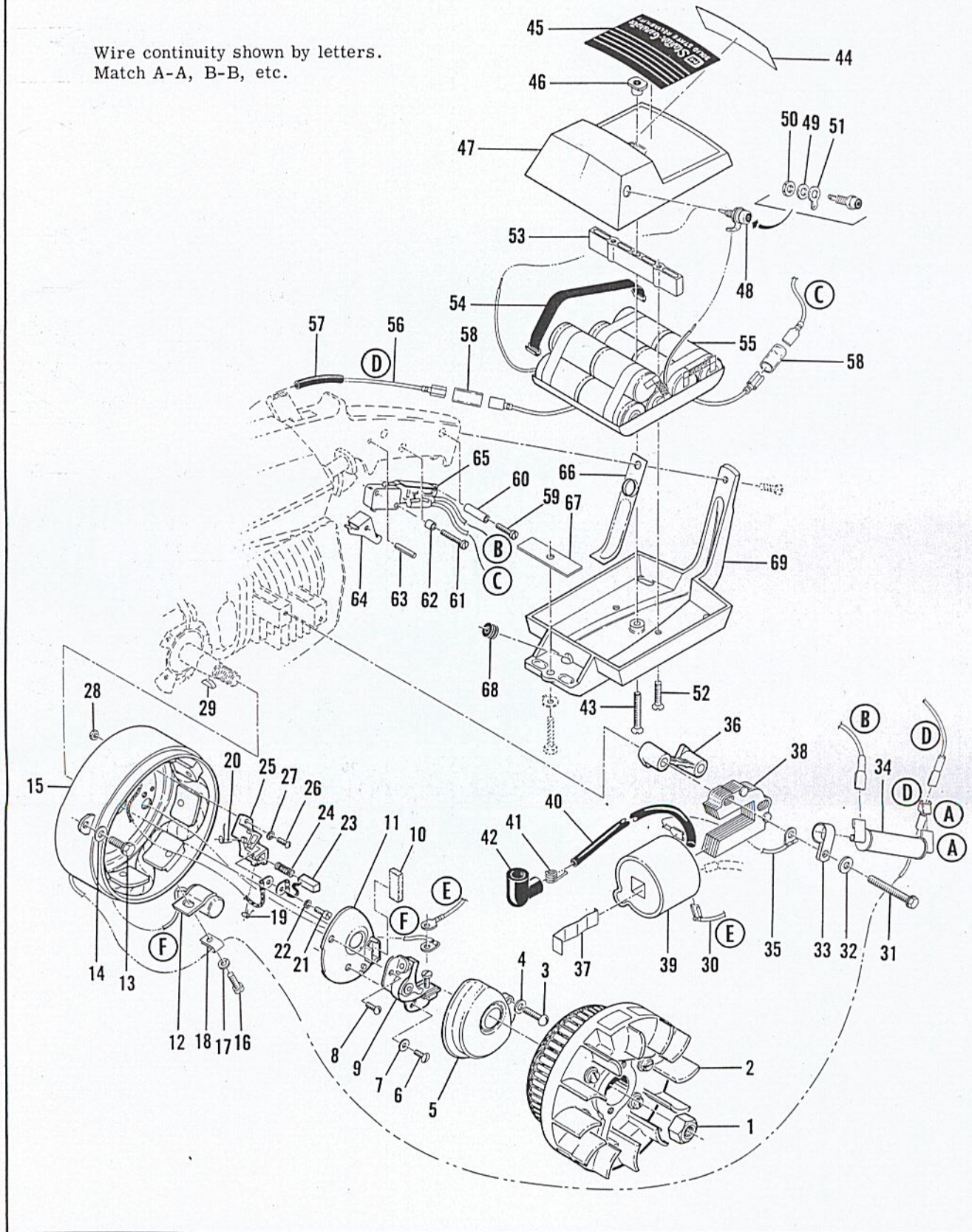


Figure 5. Electrical Components



FIGURE 5. ELECTRICAL COMPONENTS

Item No.	Description	Units Per Assy
1	Nut - Hex 3/8-24	1
2	Armature and Flywheel Assy	1
3	Screw - Rd hd 8-32 x 1/2	1
4	Washer - #8	1
5	Top - Breaker box	1
6	Screw - Tr hd 8-32 x 3/8	1
7	Washer - #8	1
8	Screw - Rd hd 8-32 x 3/8	1
9	Breaker Assy	1
10	Wiper	1
11	Base - Breaker box	1
12	Condenser	1
13	Screw - Hex hd 10-24 x 3/4 (SEMS)	2
14	Washer - #10	2
15	Housing Assy - Field coil	1
16	. Screw - Fil hd 8-32 x 5/16	1
17	. Lockwasher - #8	1
18	. Clip	1
19	. Spring - Brush clip	1
20	. Spring - Brush clip	1
21	. Screw - Fil hd 5-40 x 1/4	2
22	. Lockwasher - #5	2
23	. Brush	2
24	. Spring - Brush	2
25	. Kit - Brush holder	1
26	. . Screw	2
27	. . Lockwasher	2
28	. . Nut	2
29	Key - Woodruff	1
30	Wire Assy - Primary	1
31	Screw - Hex hd 10-24 x 1-5/8 (SEMS)	2
32	Washer - #10	2
33	Clamp - Mounting	2
34	Resistor Assy	1
35	Wire Assy - Ground	1

Item No.	Description	Units Per Assy
36	Spacer - Coil	1
37	Retainer - Coil	1
38	Lamination Assy	1
39	Coil and Terminal Assy	1
40	. Wire Assy - Spark plug	1
41	. . Connector - Spark plug	1
42	. . Boot - Spark plug	1
43	Screw - Fl hd 8-32 x 1-3/8	1
44	Nameplate	1
45	Emblem	1
46	Insert - Cover	1
47	Cover - Battery box	1
48	Phono Jack	1
49	. Washer	1
50	. Nut	1
51	. Terminal	1
52	Screw - Fl hd 10-24 x 1	2
53	Spacer - Battery	1
54	Strap Assy - Battery	2
55	Battery Assy	1
56	Wire Assy - Battery to resistor	1
57	Sleeve	1
58	Sleeve	2
59	Screw - Pan hd 4-40 x 11/16	1
60	Spacer - Long	1
61	Screw - Pan hd 4-40 x 13/16	2
62	Spacer - Short	2
63	Pin - Roll	1
64	Actuator	1
65	Switch and Regulator Assy	1
66	Strip - Battery box	1
67	Insulator - Shroud	1
68	Grommet - Handle brace	1
69	Brace - Handle	1

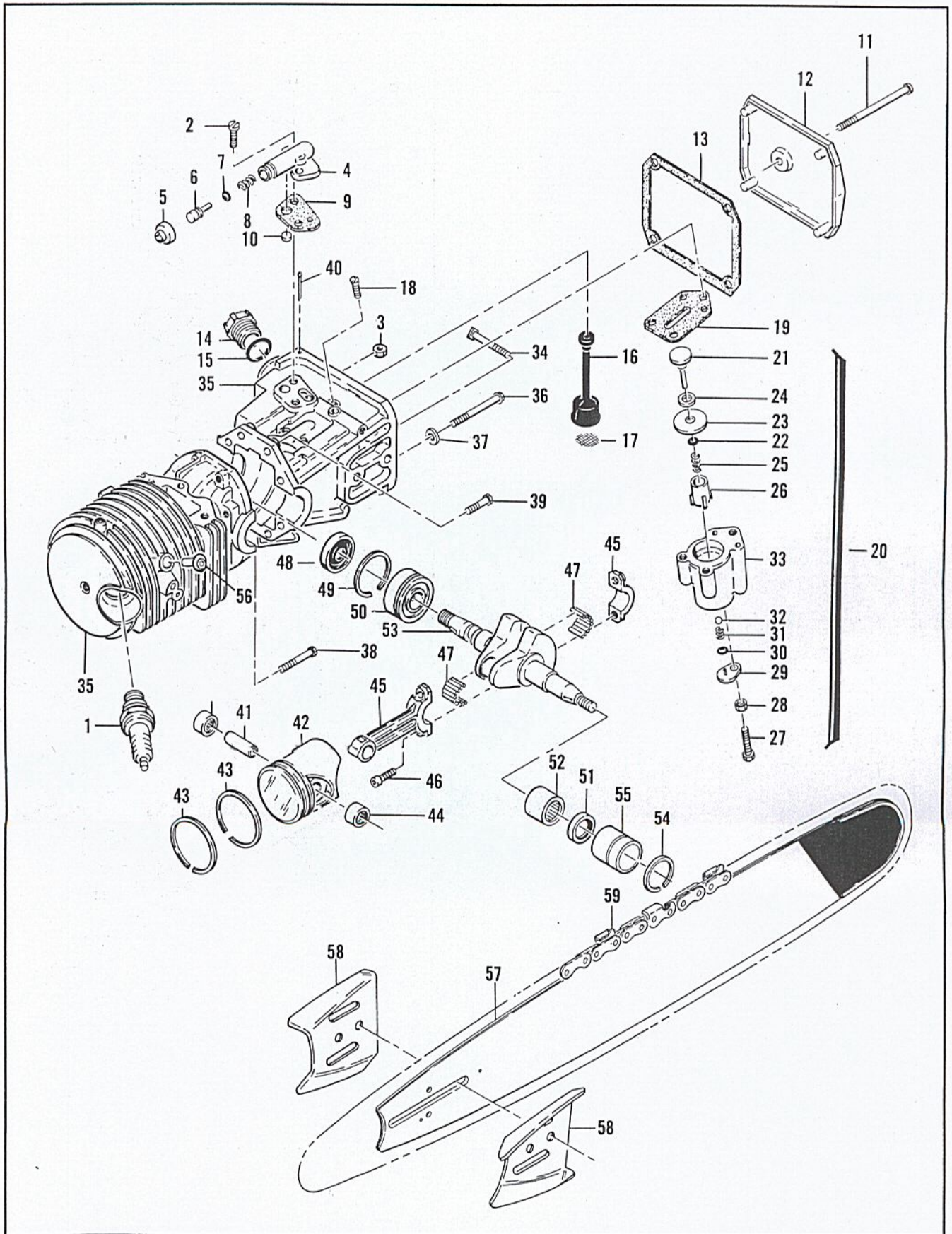


Figure 6. Powerhead Assembly

FIGURE 6. POWERHEAD ASSEMBLY

Item No.	Description	Units Per Assy
1	Spark Plug (packaged)	1
2	Screw - 8-32 x 1/2	2
3	Nut - Hex 8-32	1
4	Pump Assy - Oil	1
5	. Cap - Oil pump	1
6	. Plunger - Oil pump	1
7	. "O" Ring	1
8	. Spring - Oil pump	1
9	Gasket - Oil pump	1
10	Valve - Oil pump	1
11	Screw - Pan hd 10-24 x 2-3/4	1
12	Cover - Oil tank	1
13	Gasket - Oil tank cover	1
14	Cap - Oil	1
15	"O" Ring	1
16	Hose Assy - Oil	1
17	. Screen - Oil hose	1
18	Screw - Oval hd 8-32 x 1/2	3
19	Gasket - Pulse pump	1
20	Pulse Pump Assy	1
21	. Piston Assy - Pulse oiler	1
22	. "O" Ring	1
23	. Ring - Piston oiler	1
24	. Washer - Teflon	1
25	. Spring - Piston oiler	1
26	. Sleeve - Oiler adjustment	1
27	. Screw - Hex hd 8-32 x 1	1
28	. Nut - Hex 8-32	1
29	. Cover Assy - Outlet valve	1
30	. "O" Ring	1

Item No.	Description	Units Per Assy
31	. Spring - Outlet valve	1
32	. Ball - 3/32 in. dia.	1
33	. Body Assy - Pulse pump	1
34	Bolt - Bar mounting	2
35	Cylinder - Crankcase Assy	1
36	. Screw Assy - Sealing	4
37	. . Washer - Sealing	4
38	. Screw Assy - 8-32 x 1-1/8	1
39	. Screw Assy - 8-32 x 3/4	3
40	. Cotter Pin - 3/32 x 1/2	1
41	Pin - Piston	1
42	Piston Assy	1
43	. Ring Set - Piston	1
44	. Bearing - Needle	2
45	Connecting Rod Assy	1
46	. Screw - Socket hd 8-36 x 1/2	2
47	. Roller - Needle (Set of 20)	1
48	Oil Seal	1
49	Ring - Snap	1
50	Bearing - Ball	1
51	Oil Seal	1
52	Bearing - Needle	1
53	Crankshaft	1
54	Ring - Bearing insert	1
55	Insert - Bearing	1
56	Valve Assy - Compression release	1
57	Bar	
58	Bar Protector Plate	
59	Chain Assy	

## ACCESSORIES

Item No.	Description
1	Owner's Manual
2	Wrench - Screwdriver combination
3	Kit - Spike, 4-tooth
4	Piston Assy - 0.020 in. oversize
5	. Ring Set - Piston 0.020 in. oversize
6	. Bearing - Needle (2)
7	Piston Assy - 0.030 in. oversize

Item No.	Description
8	. Ring Set - Piston 0.030 in. oversize
9	. Bearing - Needle (2)
10	Kit - Reed spark arrester
11	Baffle - Spark arrester (optional)
12	Bar Plates - Set of 2
13	Tool - Fuel orifice
14	Kit - Combination wrench

Figure and Item numbers are referenced to the Illustrated Parts List, P/N 65666 unless otherwise indicated on this parts list sheet. Numbers in black circles refer to notes at the bottom of the page. Numbers in parenthesis following the part number indicate a quantity change from the illustrated parts list.

# MAC 5-10E

Serial Numbers Without Prefix

FIG. & ITEM	PART NUMBER	NOMENCLATURE	FIG. & ITEM	PART NUMBER	NOMENCLATURE	FIG. & ITEM	PART NUMBER	NOMENCLATURE
1-1	110454	Nut	1-44	63932	Filter	2-5	101174	Washer
1-2	100440	Washer	1-45	103356	Screw	2-6	62371	Retainer
1-3	Fig. reference		1-46	64856	Washer	2-7	63985	Shield
1-4	Fig. reference		1-47	63325	Washer	2-8	63986	Washer
1-5	102761	Screw	1-48	65726	Sleeve	2-9	65526	Drum
1-6	100352	Washer	1-49	Fig. reference		2-10	110470	Rivet
1-7	61678	Plug	1-50	65739	Gasket	2-11	62191A	Insert
1-8	101326	Nut	1-51	66232	Insulator	2-12	62190A	Handle
1-9	102130 ②	Screw	1-52	65758	Rod	2-13	59952A	Rope
1-10	100153 ②	Lockwasher	1-53	102290	Screw	2-14	36059	Spring
1-A	63484 ②	Clamp	1-54	63475	Lockplate	2-15	63987	Shield
1-11	66315	Frame Assy	1-55	63325	Washer	2-16	61635A	Bushing
1-12	103746	Nut	1-56	Fig. reference		2-17	65519	Guard
1-13	65471	Clutch Assy	1-57	64852	Gasket			
1-14	64583	Retainer	1-58	63258A	Insulator	3-1	66649 ④	Tank Assy
1-15	63999	Spring	1-59	65741	Gasket	3-A	105788	Rivet
1-16	62198B	Shoe	1-60	110482	Screw	3-2	64872	Grip
1-17	65475	Rotor	1-61	110504	Screw	3-3	105673	Pin
1-18	62328	Spring	1-62	28052	Lockplate	3-4	66794	Button
1-19	65472	Rivet	1-63	Fig. reference		3-5	64871	Button & Rod
1-20	64857	Pawl	1-64	104534	Screw	3-6	61696	Seal
1-21	65473	Washer	1-65	104849	Screw	3-7	110378	Pin
1-22	65370	Spkt. Kit	1-66	110264	Washer	3-8	65734	Spring
1-23	65368	Sprocket	1-67	63748	Gasket	3-9	65864	Trigger
1-24	110330	Bearing	1-68	110341	Screw	3-10	66156	Rod
1-25	61692	Shim	1-69	64846	Spark Arr.	3-11	105249	Screw
1-26	103879	Key	1-70	103360	Screw	3-12	64621	Shield
1-27	65750	Cover Assy	1-71	110264	Washer	3-13	64721	Bracket
1-28	65720	Nut	1-72	62380	Cover	3-14	64650	Spring
1-29	64750	Nameplate	1-73	62379B	Baffle	3-B	66246 ⑤	Spring
1-30	65740	Screen	1-74	64601	Body	3-15	66306	Lever
1-31	64626	Screw	1-75	62085A	Insulator	3-16	110469	Screw
1-32	66207	Housing	1-76	101230	Grommet	3-17	65873	Wire
1-33	61721D	Cap Assy	1-B	103469 ③	Screw	3-18	65861	Button
1-34	64762	Cover	1-C	100352 ⑥	Washer			
1-35	63040	Spring	1-77	65676	Shroud			
1-36	62316	Guide	1-78	Fig. reference				
1-37	63041	Valve				4-	66511	Carburetor
1-38	65671	Gasket				4-1	101289	Ring
1-39	110402	Screw	2-	65530	Guard Assy	4-2	65859	Spring
1-40	63270	Spacer	2-1	102144	Screw	4-3	65677	Retainer
1-41	63288	Cover	2-2	102067	Nut	4-4	65617	Plug
1-42	62102	Gasket	2-3	110387	Washer	4-5	105617	"O" Ring
1-43	64848	Hose	2-4	61705	Nut	4-6	66552	Plunger

Continued

## NOTES

① Parts List Sheet Number 66654 supersedes and cancels Sheet Number 65869. Discard all Sheet Number 65869.

② Screw - Hex hd 1/4-20 x 1-1/2

② Lockwasher - 1/4

② Clamp - Frame

Parts used for attaching the upper frame arm to the fuel tank.

③ Screw - Hex hd 10-24 x 3/8

③ Washer - #10

Parts for attaching the shroud to the underside of the crankcase.

④ Tank Assy includes two Rivets, P/N 105788 which must be removed for installation of the compression release bracket screws. Item Nos. 2 to 10 inclusive are not included in this tank assembly.

⑤ The second spring listed (3-B) is used in addition to Spring, P/N 64650, and is installed within the coils of the larger Spring, P/N 64650.

FIG. & ITEM	PART NUMBER	NOMENCLATURE	FIG. & ITEM	PART NUMBER	NOMENCLATURE	FIG. & ITEM	PART NUMBER	NOMENCLATURE
4-7	66551	"O" Ring	5-10	54184	Wiper	5-57	80975	Sleeve
4-8	110483	Screw	5-11	65414	Base	5-58	65306	Sleeve
4-9	101500	Pin	5-12	64624	Condenser	5-59	110462	Screw
4-10	62939A	Spring	5-13	110446	Screw	5-60	64872	Spacer
4-11	101207	Screw	5-14		<b>10</b> Washer	5-61	110463	Screw
4-12	62938	Clip	5-15	65996	Field Coil	5-62	64873	Spacer
4-13	62343A	Lever	5-16	66005	Screw	5-63	110451	Pin
4-14	104814	Screw	5-17	105464	Lockwasher	5-64	64681	Actuator
4-15	62290A	Plate	5-18	66004	Clip	5-D	110477	Screw
4-16	65431	Needle	5-19	66002	Spring	5-65	64733	Switch
4-17	62291A	Shaft	5-20	66001	Spring	5-66	64727	Strip
4-18	62975	Swivel	5-21	65997	Screw	5-67	65512	Insulator
4-19	110397	Screw	5-22	65998	Lockwasher	5-68	101230	Grommet
4-20	66507	Plate	5-23	65999	Brush	5-69	64638	Brace
4-21	65608	Diaphragm	5-24	66003	Spring	5-E	110417	<b>12</b> Terminal
4-22	104728	Screw	5-25	66006	Holder Kit			
4-23	110337	Pin	5-26	66007	Screw	6-1	63432	Spark Plug
4-24	62310	Lever	5-27	66008	Lockwasher	6-2	100414	Screw
4-25	62923A	Spring	5-C	66162	<b>11</b> Washer	6-3	100955	Nut
4-26	63038	Valve	5-28	66009	Nut	6-4	62261A	<b>13</b> Housing
4-27	55690B	Seal	5-29	103879	Key	6-5	62262	Cap
4-28	63041 (1)	Valve	5-30	64609	Wire	6-6	62266	Plunger
4-29	65868	Valve Set	5-31	110450	Screw	6-7	101056	"O" Ring
4-30	66153	Seat	5-32	100003	Washer	6-8	66687	Spring
4-31	61151	Ball	5-33	65517	Clamp	6-9	62230	Gasket
4-32	65445	Needle	5-34	65518	Resistor	6-10	62909	Valve
4-33	104001	"O" Ring	5-35	62819	Wire	6-11	110291	Screw
4-34	66512	Body	5-36	64653	Spacer	6-12	63072	Cover
4-35	59796	"O" Ring	5-37	51253	Retainer	6-13	62116	Gasket
4-36	65724	Stud	5-38	62741	Lamination	6-14	57129A	Cap
4-37	66158	Orifice	5-39	64619	Coil	6-15	101148	"O" Ring
4-38	63813	Orifice	5-40	64622	Wire	6-16	62123B	Hose
4-39	62288A	Bushing	5-41	62932	Connector	6-17	51506	Screen
4-40	62368	Bushing	5-42	62926	Boot	6-18	110333	Screw
4-41	62435	Seal	5-43	110480	Screw	6-19	62274	Gasket
			5-44	65438	Nameplate	6-20	62320C	Pump Assy
5-1	101391	Nut	5-45	65305	Emblem	6-21	60260A	Piston
5-2	65995	Flywheel Assy	5-46	65319	Insert	6-22	101758	"O" Ring
5-3	100690	Screw	5-47	65470	Cover	6-23	60263	Ring
5-4		<b>6</b> Washer	5-48	65567	Phono Jack	6-24	60937	Washer
5-5	65415	Top	5-49	65875	Washer	6-25	60259	Spring
5-6	110445	Screw	5-50	65876	Nut	6-26	62227	Sleeve
5-7	105976	Washer	5-51	65877	Terminal	6-27	110386	Screw
5-8	100934	Screw	5-52	100403	Screw	6-28	100251	Nut
5-A	100080	<b>7</b> Washer	5-53	66234	Spacer	6-29	63858	Cover
5-9	66231	<b>8</b> Breaker	5-54	65501	Strap	6-30	106104	"O" Ring
5-B	110489	<b>9</b> Screw	5-55	66161	Battery	6-31	62885A	"O" Ring
			5-56	65541	Wire			

**NOTES**

- 6** Washer is not required.
- 7** Washer used with Screw, P/N 100934
- 8** Breaker Assy includes Screw, P/N 110489
- 9** Screw - Pan hd 6-32 x 7/16, for attaching the primary wire assembly.
- 10** Washers (2) are not required.
- 11** Washers (2) used with Nuts, P/N 66009.
- 12** Terminal for the wire assembly leading from the field coil housing to the resistor.
- 13** Pump housing only. Not furnished as a complete pump assembly.

FIG. & ITEM	PART NUMBER	NOMENCLATURE	FIG. & ITEM	PART NUMBER	NOMENCLATURE	FIG. & ITEM	PART NUMBER	NOMENCLATURE
						<i>ACCESSORY ITEMS</i>		
6-32	102809	Ball	6-46	61627A	Screw	1	66285	Manual
6-33	62321B	Body	6-47	63225	Roller Set	2	62827	Wrench
6-34	62065	Bolt	6-48	65746	Oil Seal	3	63341A	Spike Kit
6-35	65907	Crankcase	6-49	63464	Ring	4	63233	Piston Assy
6-36	62105	Screw	6-50	63429B	Bearing	5	63291	Ring Set
6-37	62842	Washer	6-51	65747	Oil Seal	6	103085	Bearing
6-38	110289	Screw	6-52	104357	Bearing	7	63234	Piston Assy
6-39	110288	Screw	6-53	63336	Crankshaft	8	63292	Ring Set
6-40	100010	Cotter	6-54	63699	Ring	9	103085	Bearing
6-41	65389	Pin	6-55	63701	Insert	10	65529	Spark Arr.
6-42	63287	Piston Assy	6-56	65910	Valve	11	65325	Baffle
6-43	63290	Ring Set	6-57		Bar	12	64330	Plate Set
6-44	103085	Bearing	6-58	64325	Plate	13	63490	Tool
6-45	65401	Conn Rod	6-59		Chain Assy	14	63746	Wrench
						15	65712	<b>14</b> Timing Guide
						16	65778	<b>15</b> Spark Plug
						17	66316	<b>16</b> Frame Assy
						18	66086	<b>17</b> Charger

**NOTES**

**14** Timing Guide added to Accessory list.

**16** Spark Plug (AC CS 41T) added to the Accessory list.

**15** Wrap-around frame kit added to the Accessory list.

**17** Battery Charger added to the Accessory list.



**McCULLOCH CORPORATION**  
6101 WEST CENTURY BLVD., LOS ANGELES, CALIFORNIA 90045

**McCULLOCH OF CANADA, LTD.**  
77 BELFIELD ROAD, REXDALE, ONTARIO, CANADA

**McCULLOCH INTERNATIONAL, INC.**  
POSTBUS 10, MALINES, BELGIUM  
G.P.O. BOX 879, HONG KONG, B.C.C.

**McCULLOCH OF AUSTRALIA PTY., LTD.**  
P.O. BOX 165, SOUTH GRANVILLE, N.S.W., AUSTRALIA

**McCULLOCH INTERNATIONAL (U.S.), INC.**  
P.O. BOX 45466 LOS ANGELES, CALIFORNIA, U.S.A.

64575