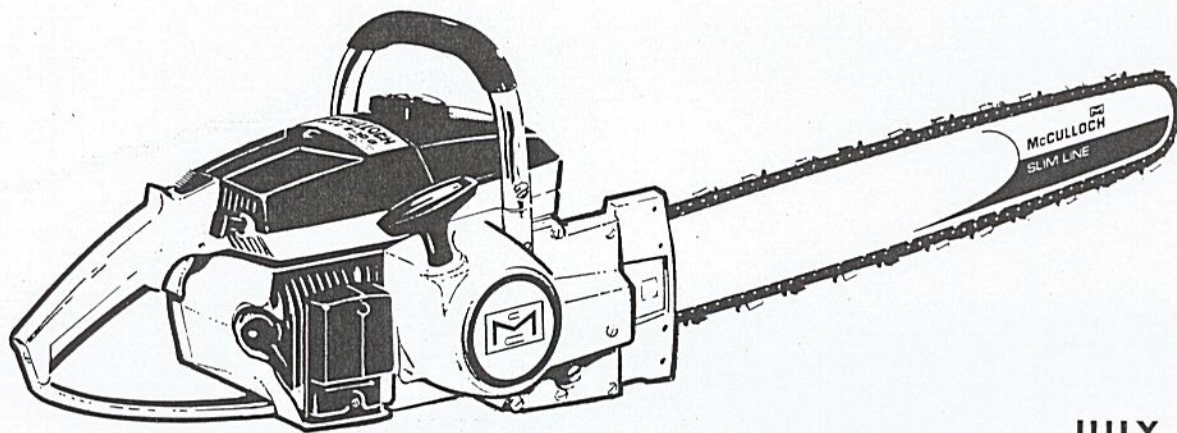


CHAIN SAW

MAC 2-10G
P/N 64810

ILLUSTRATED PARTS LIST



JULY 1966

The following pages contain an illustrated parts list for the MAC 2-10G chain saw. Due to small differences between saws, it is important that the Serial Number of your saw be included whenever spare parts are ordered.

	Page
Figure 1. Engine Exploded View - General	2
Figure 2. Starter and Clutch Assemblies	4
Figure 3. Fuel Tank Assembly	4
Figure 4. Carburetor Assembly	6
Figure 5. Transmission Assembly	8
Figure 6. Powerhead Assembly	10

 **McCULLOCH**

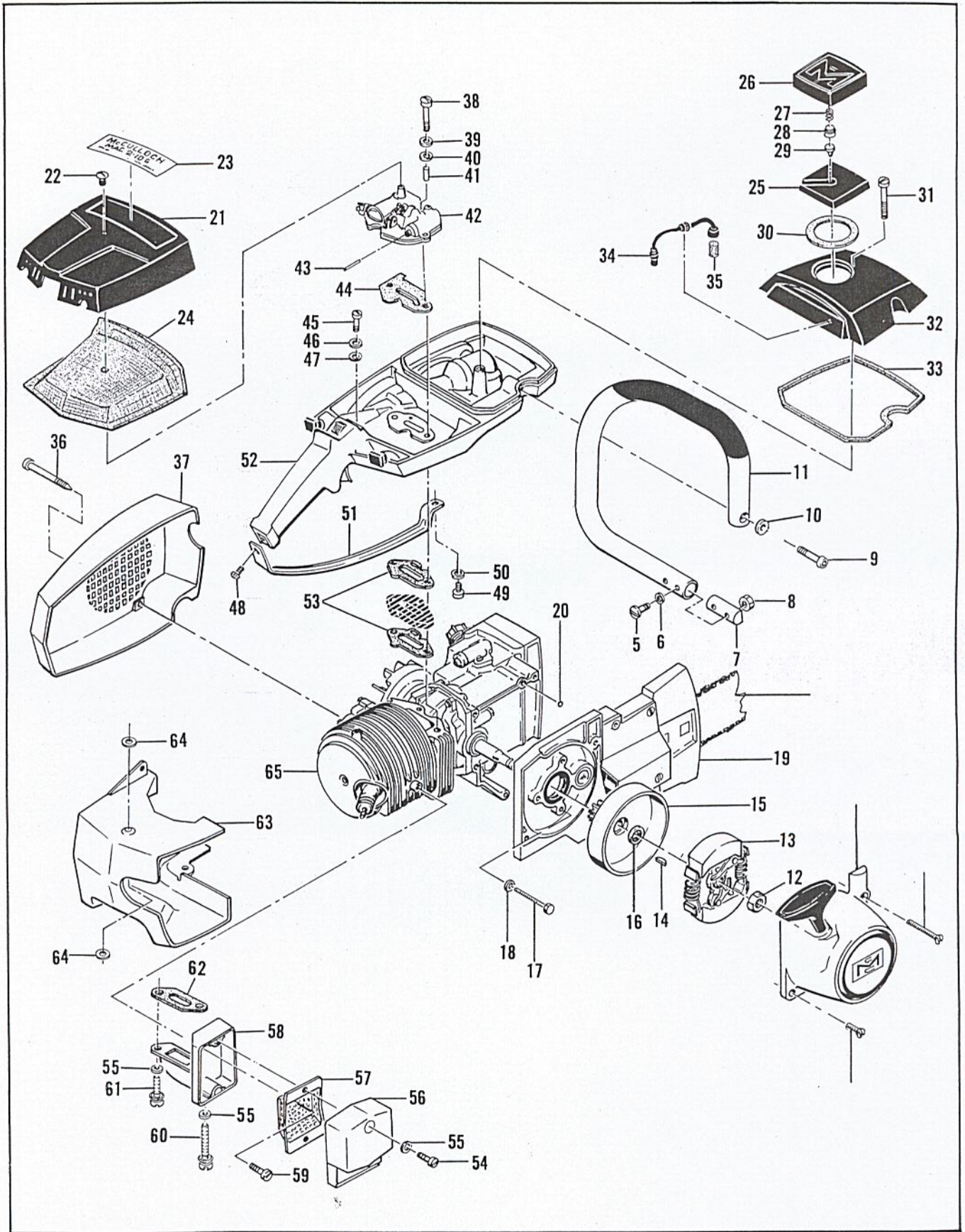


Figure 1. Engine Exploded View - General

FIGURE 1. ENGINE EXLODED VIEW — GENERAL

Index No.	Part Number	Nomenclature	Units Per Assy
1		Bar and Chain Assy (see Figure 5)	1
2	110403	Screw - Ov hd 8-32 x 5/8 in. lg.	1
3	104155	Screw - Ov hd 10-24 x 1-1/2 in. lg.	1
4		Starter Assy (see Figure 2)	1
5	102761	Screw - Hex hd 10-24 x 7/8 in. lg.	2
6	100352	Washer - #10	2
7	61678	Plug - Nut retainer	1
8	101326	Nut - Hex 10-24	2
9	105187	Screw - Skt hd 1/4-20 x 1-1/8 in. lg.	1
10	100004	Washer - Plain 1/4 in.	1
11	65404	Frame and Grip Assy	1
12	103746	Nut - 3/8-24	1
13		Clutch Assy (see Figure 2)	1
14	103879	Key - Woodruff	1
15	63493	Drum, Gear and Seal Assy	1
16	63476	. Seal	1
17	102765	Screw - Hex hd 10-24 x 1-3/4 in. lg.	2
18	100003	Washer - Plain #10	2
19		Transmission Assy (see Figure 5)	1
20	103195	"O" Ring	1
21	62117	Cover Assy - Air cleaner	1
22	62434	. Nut - Air cleaner cover	1
23	63728	Nameplate	1
24	62077	Screen - Air cleaner	1
25	61721C	Fuel Cap Assy	1
26	61720	. Cover	1
27	63040	. Spring	1
28	62316	. Guide	1
29	63041	. Valve	1
30	61722C	. Gasket	1
31	110334	Screw - Ov hd 12-24 x 1-3/4 in. lg.	1
32	63656	Cover - Fuel tank	1
33	62102	Gasket - Cover	1
34	64848	Hose Assy - Fuel	1
35	63932	. Filter - Fuel	1
36	62978	Screw - Special	3
37	63073	Fan Housing	1
38	103355	Screw - Hex hd 10-24 x 1-7/8 in. lg.	2
39	64856	Washer - Plain #10	2
40	55636	Washer - Insulator	2
41	62327A	Sleeve - Insulator	2
42		Carburetor (see Figure 4)	1
43	62066A	Rod - Primer	1
44	62080B	Gasket - Carburetor	1
45	102290	Screw - Hex hd 10-24 x 1-1/8 in. lg.	1
46	64856	Washer - Plain #10	1
47	55636	Washer - Insulating	1
48	110353	Screw - Ov hd 10-24 x 3/8 in. lg.	1
49	102289	Screw - Hex hd 10-24 x 3/4 in. lg.	1
50	100352	Washer - Plain #10	1
51	63070	Brace - Handle	1
52		Fuel Tank Assy (see Figure 3)	1
53	62995A	Gasket - Fuel tank	2
	62366B	Kit - Spark arrester	1
54	101284	. Screw - Fil hd 10-24 x 1-1/8 in. lg.	2
55	110264	. Washer - Special #10	4
56	62380	. Cover Assy	1
57	62379B	. Baffle	1
58	63364	. Body & Duct Assy	1
59	110341	Screw - Hex hd 10-24 x 1/2 in. lg.	1

This list is continued on page 5

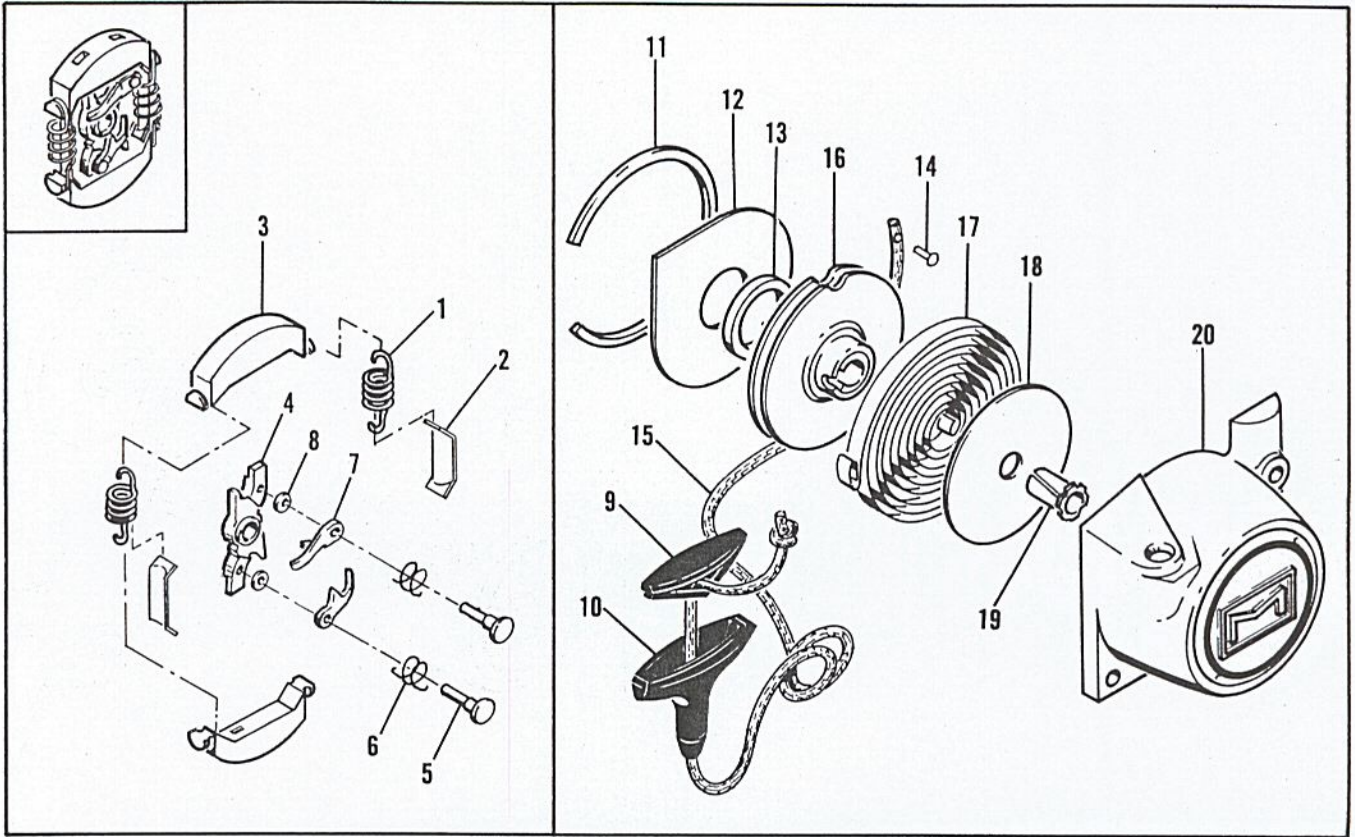


Figure 2. Clutch and Starter Assemblies

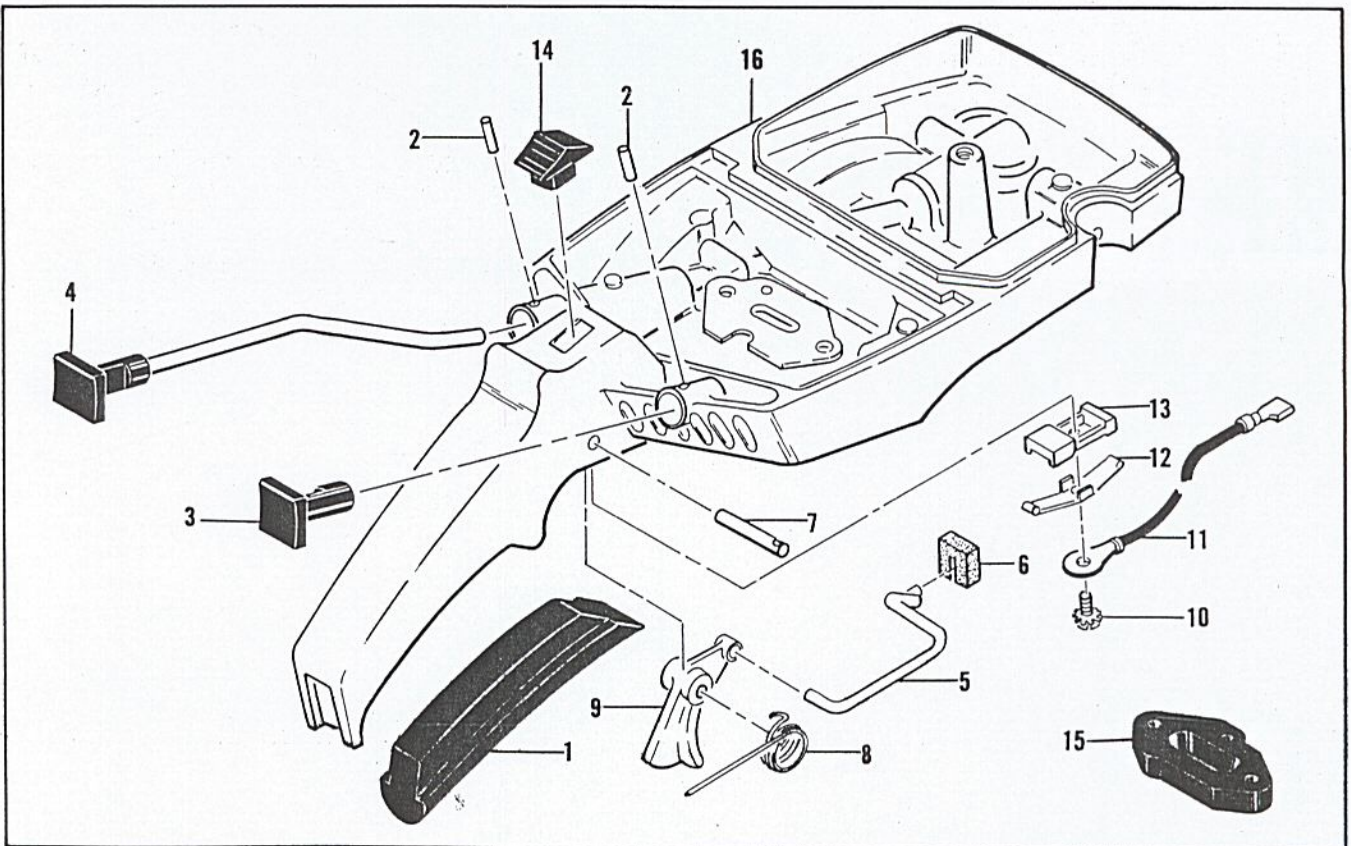


Figure 3. Fuel Tank Assembly

FIGURE 1. ENGINE EXLODED VIEW — GENERAL (CONTINUED)

Index No.	Part Number	Nomenclature	Units Per Assy
60	104534	Screw - Skt hd 10-24 x 1-3/8 in. lg.	1
61	104895	Screw - Skt hd 10-24 x 5/8 in. lg.	1
62	63748	Gasket - Spark arrester	1
63	64623	Shroud - Cylinder	1
64	62085A	Insulator - Shroud	2
65		Powerhead Assy (see Figure 6)	1

FIGURE 2. STARTER AND CLUTCH ASSEMBLIES

Index No.	Part Number	Nomenclature	Units Per Assy
	65471	Clutch Assy	1
1	63999	. Spring - Clutch	2
2	64583	. Retainer - Spring	2
3	62198B	. Shoe	2
4	65475	. Rotor Assy - Clutch	1
5	65472	. . Rivet	2
6	62328	. . Spring - Pawl	2
7	64857	. . Pawl	2
8	65473	. . Washer - Plain	2
	63494	Starter Assy	1
9	62191A	. Insert - Starter handle	1
10	62190A	. Handle - Starter	1
11	62371	. Retainer - Shield	1
12	63985	. Shield - Dust	1
13	63986	. Washer - Thrust	1
14	101136	. Rivet - Starter rope	1
15	59952A	. Rope - Starter	1
16	62179A	. Drum - Starter	1
17	36059	. Spring - Rewind	1
18	63987	. Shield - Spring	1
19	61635A	. Bushing - Nyliner	1
20	63412	. Housing - Starter	1

FIGURE 3. FUEL TANK ASSEMBLY

Index No.	Part Number	Nomenclature	Units Per Assy
	63949	Kit - Fuel Tank Assy	1
1	64872	. Grip - Handle	1
2	105673	. Pin - Roll 3/32 x 9/16 in.	2
3	63045	. Button - Primer	1
4	63809	. Button - Oiler rod assy	1
5	62970C	. Rod - Throttle	1
6	61696	. Seal - Throttle rod	1
7	110378	. Pin - Roll 3/16 x 1-1/8 in.	1
8	59598	. Spring - Trigger	1
9	62949	. Trigger - Throttle	1
10	103672	. Screw - Fil 8-32 x 1/2 in. lg. (SEMS)	1
11	62973A	. Wire - Stop switch	1
12	62451	. Contact - switch	1
13	62950A	. Base - switch	1
14	62951	. Button - switch	1
15	63396	. Insulator - Fuel tank	1
16		. Tank - Fuel (Order Fuel Tank Assy 63949)	1

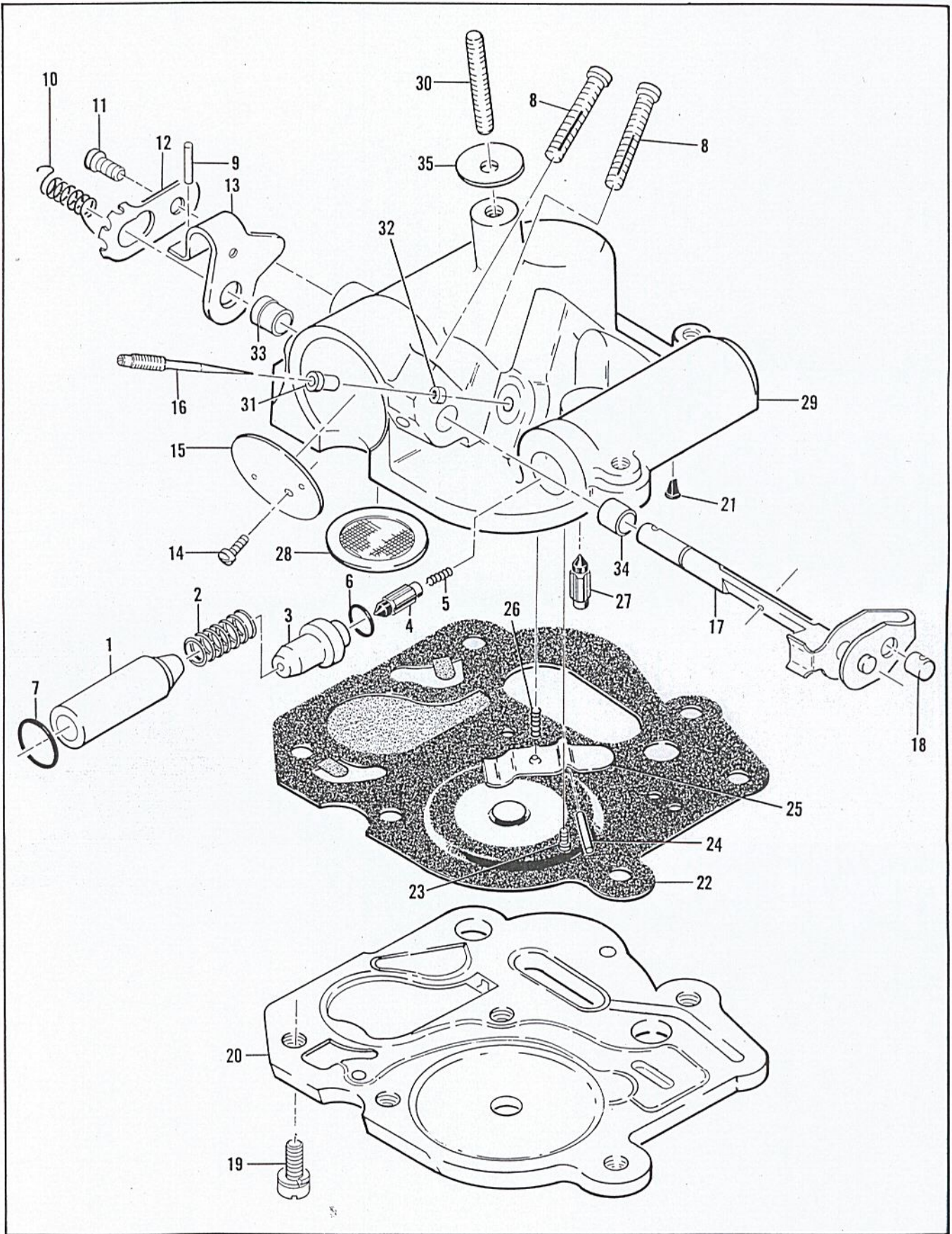


Figure 4. Carburetor Assembly

FIGURE 4. CARBURETOR ASSEMBLY

Index No.	Part Number	Nomenclature	Units Per Assy
	62300D	Carburetor Assy	1
1	62308A	. Plunger - Primer	1
2	11086	. Spring - Plunger	1
3	63037	. Seat - Primer valve	1
4	63038	. Valve - Primer needle	1
5	63039	. Spring - Needle valve	1
6	101056	. "O" Ring	1
7	110351	. "O" Ring	1
8	62971	. Screw - Long locking adjustment	2
9	101500	. Roll Pin - .062 x 3/8 in.	1
10	62939A	. Spring - Idle governor	1
11	103934	. Screw - Pan hd 6-32 x 1/4 in. lg. (SEMS)	1
12	62938	. Clip - Throttle shaft	1
13	62343A	. Lever - Throttle	1
14	104814	. Screw - Pan hd 4-40 x 1/4 in. lg. (SEMS)	1
15	62290A	. Plate - Throttle	1
16	62976A	. Needle - Metering	1
17	62291A	. Shaft Assy - Throttle	1
18	62975	. Swivel - Needle	1
19	110397	. Screw - Pan hd 8-32 x 7/16 in. lg. (SEMS)	5
20	63042	. Plate - Carburetor base	1
21	63041	. Valve - Primer	1
22	65410	. Diaphragm Assy - Pump	1
23	104728	. Screw - 6-32 x 1/4 in. lg.	1
24	110337	. Pin - Inlet lever	1
25	62310	. Lever - Inlet	1
26	62923A	. Spring - Inlet lever	1
27	63038	. Valve - Inlet needle	1
28	55690B	. Seal - Capillary	1
29	63019B	. Body Assy - Carburetor	1
30	62433B	. . Stud - Carburetor	1
31	62295D	. . Orifice - Air	1
32	63813	. . Orifice - Fuel	1
33	62288A	. . Bushing - Throttle shaft	1
34	62368	. . Bushing - Throttle shaft	1
35	62435	Seal - Air cleaner stud	1

TOOLS AND ACCESSORIES

Index No.	Part Number	Nomenclature	Units Per Assy
	65359	Owner's Manual	
	51445A	Wrench - Screwdriver combination	
	62825	Piston Assy - 0.020 in. oversize	
	62813	. Ring Set - Piston 0.020 in. oversize	
	103512	. Bearing - Needle (2)	
	62826	Piston Assy - 0.030 in. oversize	
	62812	. Ring Set - Piston 0.030 in. oversize	
	103512	. Bearing - Needle (2)	
	64586	Kit - Wraparound frame	
	65325	Screen - Spark arrester	
	63432	Spark Plug - AC CS 42T	

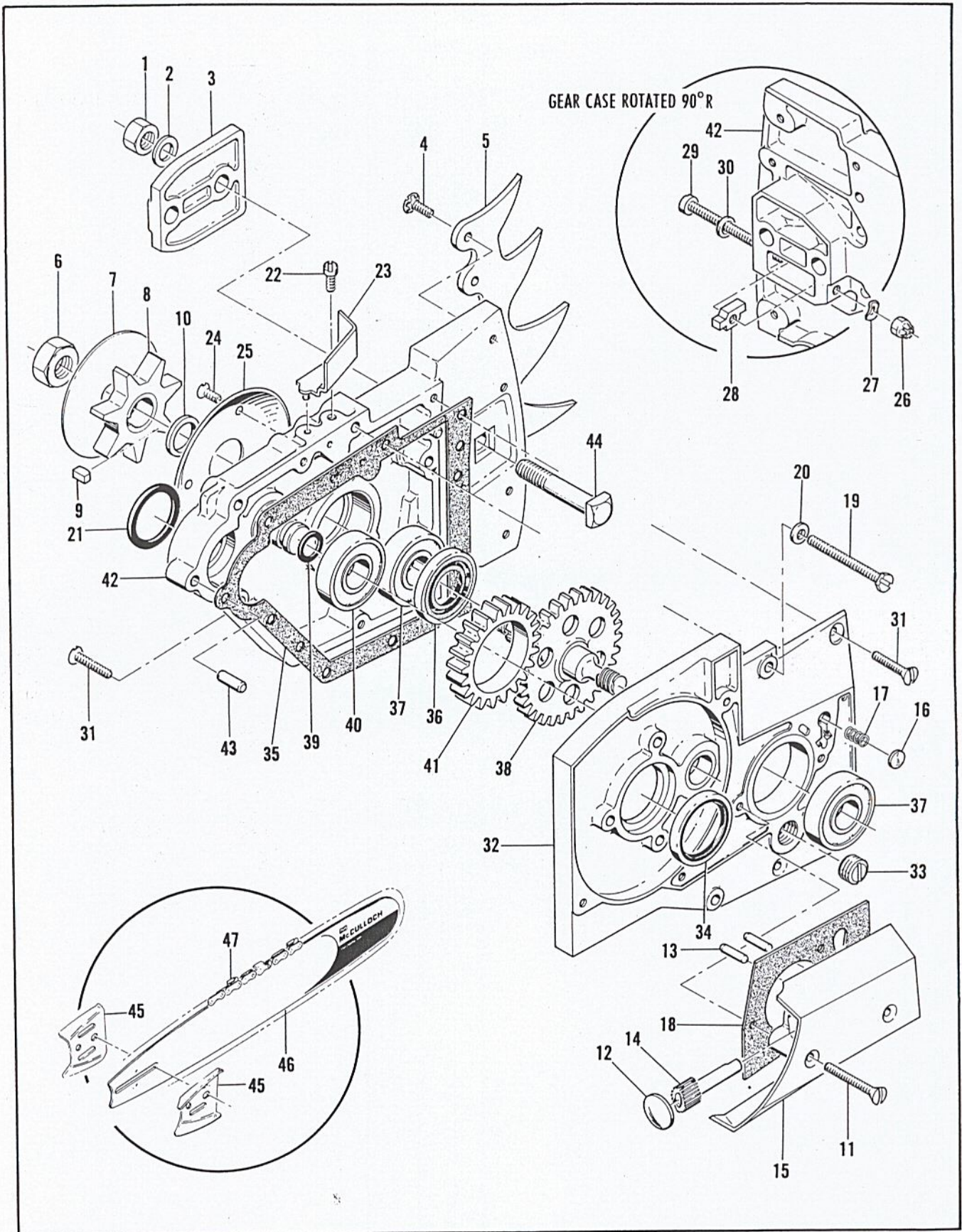


Figure 5. Transmission Assembly

FIGURE 5. TRANSMISSION ASSEMBLY

Index No.	Part Number	Nomenclature	Units Per Assy
1	103729	Nut - Hex 3/8-24	2
2	100006	Washer - Plain 3/8	2
3	63417	Plate - Bar clamp	1
	63994	Kit - Spike	1
4	110418	. Screw - Fl hd 10-24 x 7/16 in. lg. (SEMS)	4
5	63833	. Spike	1
6	60972	Nut - Hex 7/16-20	1
7	63997A	Plate - Sprocket	1
8	36644A	Sprocket	1
9	63808	Key - Sprocket	1
10	64754	Spacer - Sprocket	1
11	110406	Screw - Ov hd 8-32 x 1-1/4 in. lg.	2
	63479	Pump Assy - Oil	1
12	105559	. Plug - Welch	1
13	110392	. Pin - Plunger	2
14	63428	. Plunger Assy	1
15	63425	. Body - Oil pump	1
16	62909	Valve - Oiler	1
17	63692	Spring - Oiler valve	1
18	63474	Gasket - Oil pump	1
19	102765	Screw - Hex hd 10-24 x 1-3/4 in. lg.	2
20	100003	Washer - Plain #10	2
	64769	Transmission Assy	1
21	104360	. "O" Ring	1
22	110055	. Screw - Fl 8-32 x 3/8 in. lg.	1
23	63491	. Filler	1
24	110417	. Screw - Fl hd 6-32 x 3/8 in. lg.	3
25	63416	. Plate - Sprocket	1
26	102067	. Nut - Lock #10	1
27	110387	. Washer - Wave	1
28	63824A	. Nut - Bar adjustment	1
29	102144	. Screw - Bar adjustment	1
30	101174	. Washer - Plain #10	1
31	110405	. Screw - Ov hd 8-32 x 7/8 in. lg.	6
32	64779	. Cover Assy - Gearcase	1
33	101775	. . Plug - Filler	1
34	63477	. . Seal - Pinion gear	1
35	63433	. Gasket - Gearcase cover	1
36	63478	. Seal - Gearcase	1
37	110348	. Bearing - Sprocket shaft	2
38	64775	. Gear - Sprocket	1
39	110452	. "O" Ring	1
40	110348	. Bearing - Idler	1
41	64774	. Gear - Idler	1
42	64770	. Gearcase Assy	1
43	101770	. . Pin - Dowel	2
44	64584	. . Bolt - Bar	2
45	64935	Plate - Bar protector	2
46		Bar	
47		Chain	

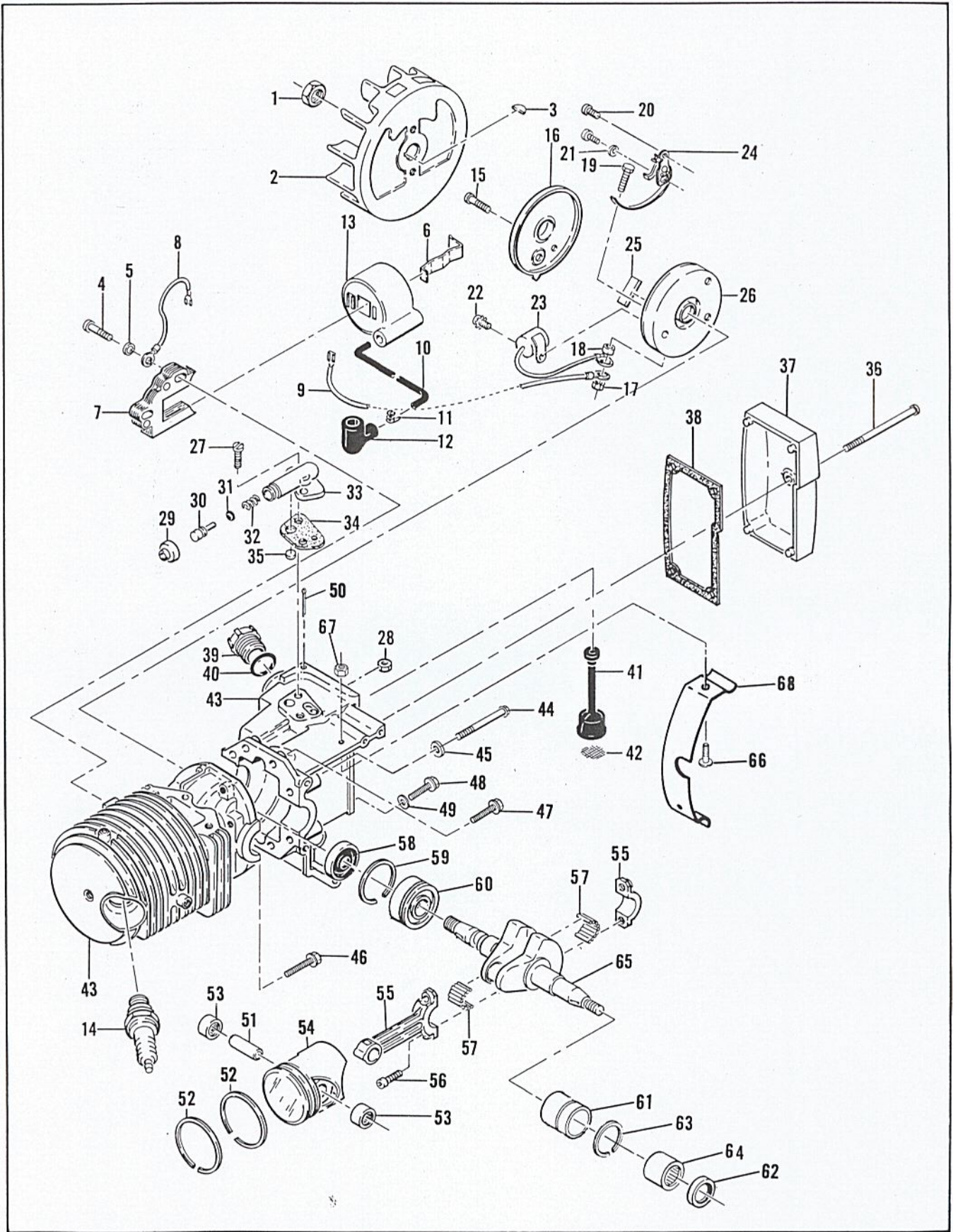


Figure 6. Powerhead Assembly

FIGURE 6. POWERHEAD ASSEMBLY

Index No.	Part Number	Nomenclature	Units Per Assy
1	101391	Nut - Hex 3/8-24	1
2	61737A	Flywheel Assy	1
3	103879	Key - Flywheel	1
4	101965	Screw - Fil hd 10-24 x 7/8 in. lg. (SEMS)	2
5	100003	Washer - Plain #10	2
6	51253	Retainer - Coil	1
7	62741	Lamination Assy	1
8	62819	Wire Assy - Ground	1
9	62818	Wire Assy - Primary	1
	62927A	Coil and Terminal Assy	1
10	62929A	. Wire Assy - Spark plug	1
11	62932	. . Connector	1
12	62926	. . Boot	1
13		. Coil Assy (Order Coil & Terminal Assy #62927A)	1
14	63097	Spark plug (Packaged)	1
15	110349	Screw - Rd hd 8-32 x 3/4 in. lg.	1
16	62362	Cover - Breaker box	1
17	100298	Nut - Hex 6-32	1
18	62365	Spacer - Breaker screw	1
19	110346	Screw - Hex hd 6-32 x 3/4 in. lg.	1
20	100934	Screw - Rd hd 8-32 x 3/8 in. lg.	2
21	105976	Washer - Plain #8	1
22	105249	Screw - Rd hd 8-32 x 3/8 in. lg. (SEMS)	1
23	61650	Condenser	1
24	62363	Breaker Assy	1
25	54184	Wiper - Cam	1
26	62361	Box - Breaker	1
27	100414	Screw - 8-32 x 1/2 in. lg.	2
28	100955	Nut - Hex 8-32	1
	62319A	Pump Assy - Oil	1
29	62262	. Cap - Oil pump	1
30	62266	. Plunger - Oil pump	1
31	101056	. "O" Ring	1
32	59934	. Spring - Oil Pump	1
33		. Housing - Oil pump (Order Pump Assy #62319A)	1
34	62230	Gasket - Oil pump	1
35	62909	Valve - Oil pump	1
36	110407	Screw - Pan hd 10-24 x 3-1/2 in. lg.	1
37	63974	Cover - Oil tank	1
38	63442	Gasket - Oil tank cover	1
39	57129A	Cap - Oil	1
40	101148	"O" Ring	1
41	62123B	Hose Assy - Oil	1
42	51506	. Screen - Oil hose	1
43	65385	Cylinder - Crankcase Assy	1
44	62105	. Screw Assy - Sealing	4
45	62842	. . Washer - Sealing	4
46	110404	. Screw Assy - 8-32 x 7/8 in. lg.	1
47	110288	. Screw Assy - 8-32 x 3/4 in. lg.	2
48	63607	. Screw Assy - Sealing 8-32 x 3/4 in. lg.	1
49	63606	. . Washer - Sealing	1
50	100010	. Cotter Pin - 3/32 x 1/2 in. lg.	1
51	61649	Pin - Piston	1
	62824	Piston Assy	1
52	62814	. Ring Set - Piston	1
53	103512	. Bearing - Needle	2
54		. Piston (Order Piston Assy #62824)	1
55	65401	Connecting Rod Assy	1
56	61627A	. Screw - Socket hd 8-36 x 1/2 in. lg.	2
57	63225	. Roller - Needle (set of 20)	1

This list is continued on page 12

FIGURE 6. POWERHEAD ASSEMBLY (CONTINUED)

Index No.	Part Number	Nomenclature	Units Per Assy
58	61618	Oil Seal	1
59	63464	Ring - Snap	1
60	63429B	Bearing - Ball	1
61	63492	Insert and Bearing Assy	1
62	110260	. Oil Seal	1
63	63699	. Ring - Snap	1
64	104357	. Bearing - Needle	1
65	63401A	Crankshaft	1
66	105521	Screw - Rd hd 10-24 x 5/16 in. lg.	1
67	101191	Nut - Hex 10-24	1
68	65363	Guard - Crankcase	1



McCULLOCH CORPORATION
6101 WEST CENTURY BLVD., LOS ANGELES, CALIFORNIA 90045

McCULLOCH OF CANADA, LTD.
77 BELFIELD ROAD, REXDALE, ONTARIO, CANADA

McCULLOCH INTERNATIONAL, INC.
POSTBUS 10, MALINES, BELGIUM
G.P.O. BOX 879, HONG KONG, B.C.C.

McCULLOCH OF AUSTRALIA PTY., LTD.
P.O. BOX 165, SOUTH GRANVILLE, N.S.W., AUSTRALIA

McCULLOCH INTERNATIONAL (U.S.), INC.
P.O. BOX 45466 LOS ANGELES, CALIFORNIA, U.S.A.