

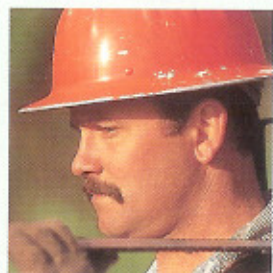
Husqvarna 371XP

 Husqvarna

371XP

Made for professionals. By professionals.

Our development department is in Huskvarna, Sweden. And all over the world.



FROM LEFT TO RIGHT:
PETER KIRKHAM, NEW ZEALAND.
DON VAUGHAN, USA.
ANDRÉ EMANUELLE, FRANCE.
GÖRAN BYSKÉN, SWEDEN.

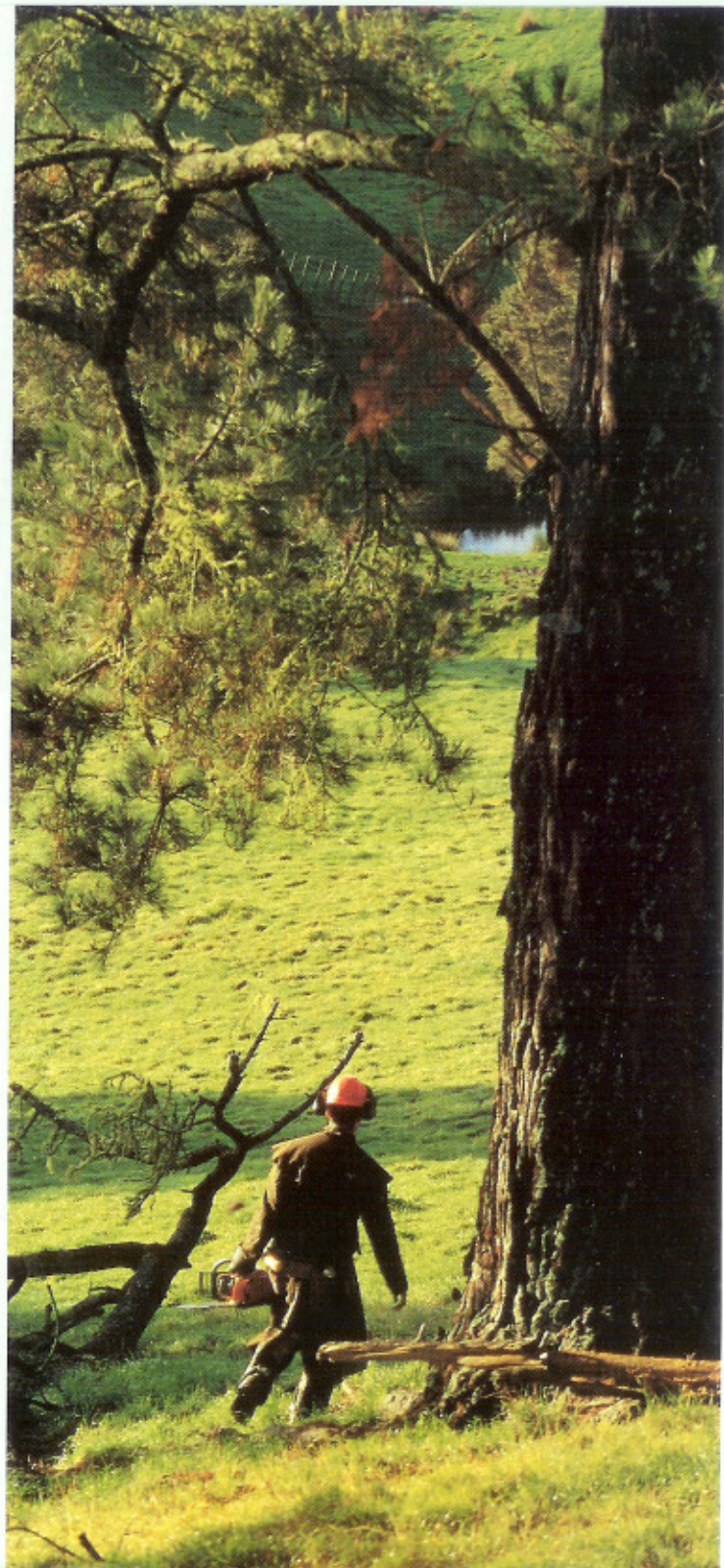


The Husqvarna 371XP is the latest result of Husqvarna's close collaboration with professional forestry workers. Technical innovations and design solutions are tested under the toughest conditions in forests around the world.

"It's really great that Husqvarna let us test their machines and give regular reports to their technicians. We are all professionals working together. Their people understand the technology and we understand the day-to-day realities."

ANDRÉ EMANUELLE

The Husqvarna 371XP is distinguished by its performance, ergonomic design, safety and environment friendly features. These four characteristics are the foundation of Husqvarna's product development. The Husqvarna 371XP has been developed for professionals—by professionals.



Developed for professionals. The 371XP lets you work harder and longer.

The Husqvarna 371XP has a unique combination of design features that make it an unbeatable tool. Rugged and reliable, with high performance built into the versatile saw body, it cuts more efficiently so you get more done.

1 LowVib

Husqvarna's unique LowVib vibration damping system ensures very low vibration levels. The Husqvarna 371XP has lower vibration levels than any other saw in the 70 cm³ class.

2 Air Injection

Husqvarna's Air Injection is a unique air cleaning system that uses centrifugal force to clean the engine intake air. As a result you can work harder and longer.

3 Easy access to air filter

The cover over the air filter and spark plug is easily removed by hand by releasing two catches. The air filter can also be removed easily without tools.

4 Smart Start

The Smart Start decompression valve makes this saw very easy to start. It reduces cylinder compression at the moment of starting. This saves you effort and reduces strain on the starting mechanism.

5 Vibration damped stop button

The stop button is an important safety feature and is protected from vibration on the handle unit of the saw.

6 Inertia activated chain brake

The inertia activated chain brake makes work even safer for you. The brake is designed to work in any position and the chain stops in a fraction of a second if a kickback occurs.





Four transfer ports improve efficiency

The cylinder of the 371XP has 2x2 transfer ports that allow the air/fuel mixture to pass swiftly into the combustion chamber. This results in more efficient combustion of the air/fuel mixture and increased effect.



Over five horsepower. Just 5.9 kg. Our best power-to-weight ratio ever.

The Husqvarna 371XP is a tough powerhouse that is very flexible and reliable to work with. Top performance, combined with an ergonomic design that ensures minimum vibration, makes work easier for you.

The engine deserves a chapter of its own. With a displacement of 71 cm³ it develops a full 3.9 kW (5.3 hp). Despite this, it weighs no more than 5.9 kg. The Husqvarna 371XP has the best power-to-weight ratio in its class.

The lightweight piston, the strong crankshaft and the cylinder with its 2x2 transfer

ports give the engine very high torque and ensures reliability. An improved carburettor, isolated from vibration, combined with the high energy ignition system, ensures easy starting, safer running and steady idling. The new "self-ventilated" clutch efficiently transfers power from the engine to the chain to give excellent cutting performance.

The engine in the Husqvarna 371XP is designed to operate at peak efficiency throughout a long and tough working life.

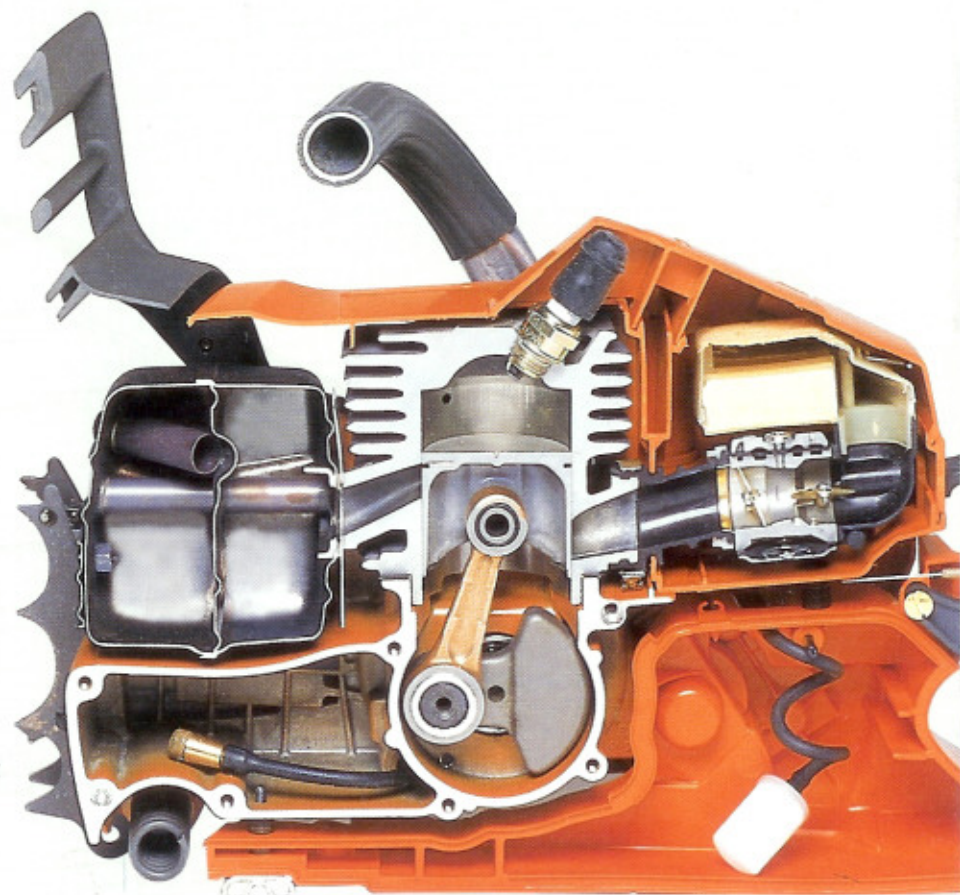


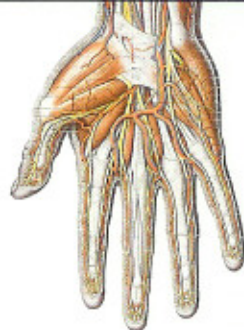
CoolFlo™ clutch

The new design keeps the clutch cool, even during the toughest operations. This extends its life and further increases the reliability of the saw.

Power-to-weight over the years

The power-to-weight ratio is a very important feature of a chain saw. Husqvarna has always led the way in developing stronger and lighter engines.

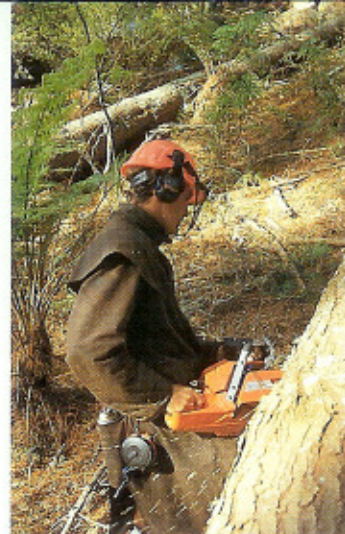




With Husqvarna's LowVib vibration damping system the handle unit is insulated from the engine unit, effectively reducing the vibrations that reach your hands.

"THE SAW IS WELL BALANCED AND SURPRISINGLY LIGHT. IT IS EXTREMELY FLEXIBLE."

PETER KIRKHAM



The only good vibration is no vibration. The 371XP vibrates less than on any other 70 cm³ saw.

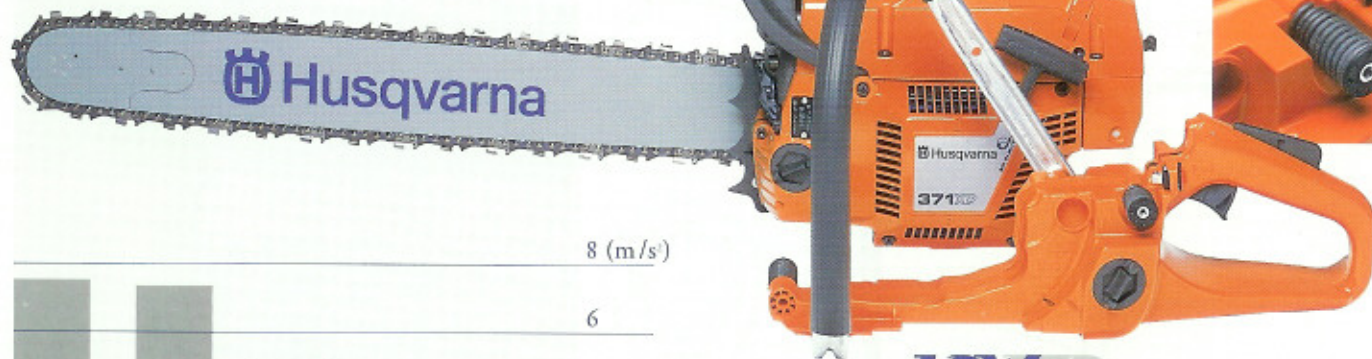
The Husqvarna 371XP has very low vibration levels. Thanks to our unique LowVib vibration damping system we have succeeded in reducing vibration to a level lower than we have up to now measured on any other saw. The handle unit is insulated from vibration generating components, which makes this saw very comfortable to use. Vibration is efficiently absorbed by powerful steel springs, so you can work comfortably, for longer. Best of all, you feel less tired after a long day at work. Another ergonomic advantage is the high centre of gravity. You will appreciate this most

of all during limbing, as it makes the saw easy to swing and run along a stem. The slim, flat-based design of the saw lets you work with it close to your body. The rear handle, with its new easy grip throttle control and angled front handle combine to reduce the strain on your wrists.

The Husqvarna 371XP increases your productivity.

Powerful steel springs

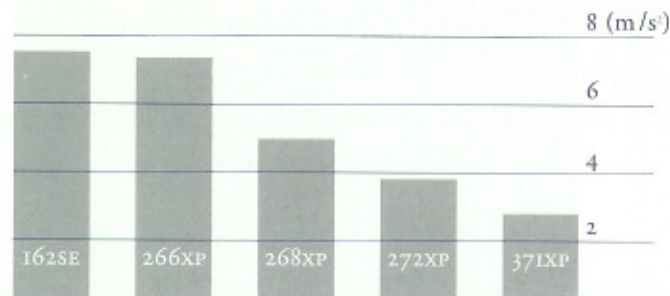
The vibration damping elements are strong steel springs with a long service life. They effectively absorb lateral and longitudinal vibration.



LOWVIB

Lower every year

The chart shows the changes in vibration levels when crosscutting with our chain saws in the 70 cm³ class. The bars represent the average value between front and rear handles.





"HOW OFTEN YOU CHANGE THE FILTER DEPENDS ON THE TYPE OF TIMBER YOU CUT. HERE IN THE FRENCH ALPS THE 371XP CAN RUN FOR THREE DAYS WITHOUT A PROBLEM."

ANDRÉ EMANUELLE

Husqvarna's Air Injection is a unique system that cleans the air before it is drawn into the engine. All air for the engine, both for cooling as well as for the airfilter/carburettor, is drawn in through the starter housing. Centrifugal force generated by the flywheel efficiently separates the sawdust, dirt and other particles from the air before it passes through the specially designed air intake nozzle to the air filter. The engine breathes

Air Injection

The secret of Air Injection is the specially designed intake nozzle located close to the flywheel. Centrifugal forces from the flywheel throw away the foreign particles. Cleaned air is delivered through the nozzle to the airfilter. The intake air is cleaner, which reduces engine wear and ensures smoother, more efficient running. And there's no need to clean the filter as often.

**The cleaner the intake air, the better the engine runs.
Just one of the advantages of Air Injection.**



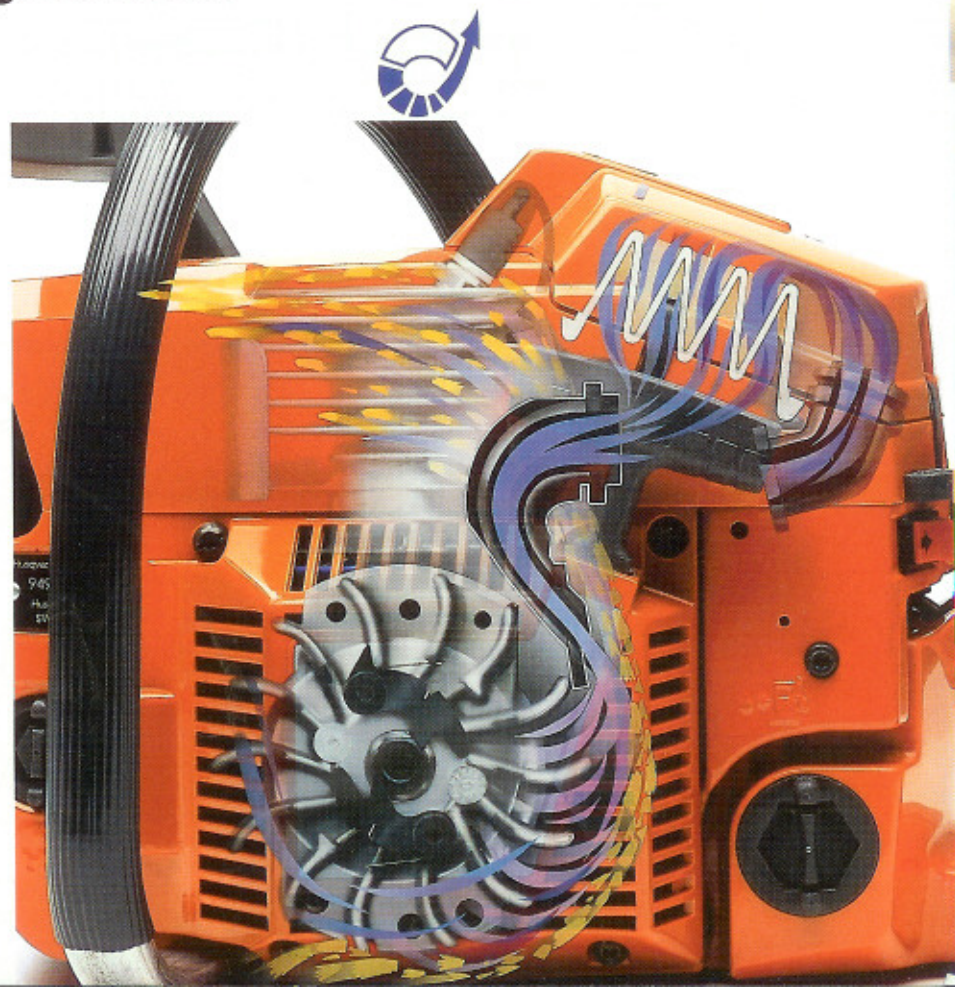
"THE AIR INJECTION-SYSTEM MEANS THE ENGINE RUNS MUCH BETTER AND THERE'S LESS WEAR."

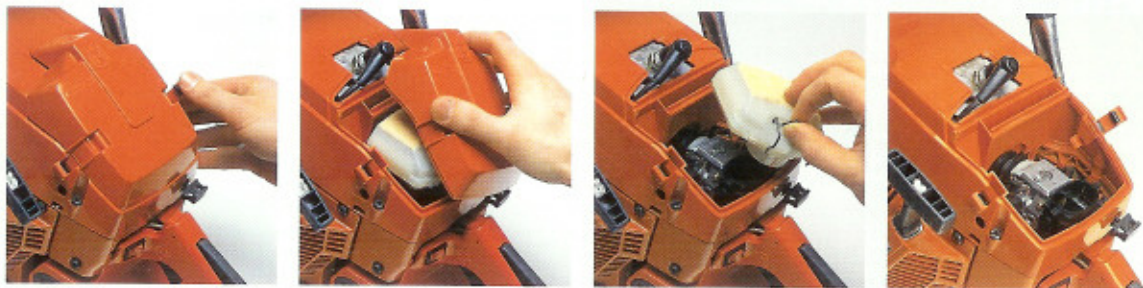
ANDRÉ EMANUELLE

cleaner air, and combustion is more efficient, resulting in smoother running and more power. This system also reduces engine wear considerably, as it minimises the number of foreign particles in the carburettor and cylinder. So you can work harder for longer.

Another significant advantage of Husqvarna's Air Injection system is that you do not need to clean the air filter as often as before. The air cleaning system is so effective that the proportion of particles reaching the air filter is minimal compared to other saws. You get better fuel economy and can run for longer periods with the 371XP before you have to remove and clean the filter. So you save time.

Air Injection means less filter cleaning and a longer life for your saw.





No tools required

The air filter cover is released by two catches. This also uncovers the spark plug. When you release the steel clip, the air filter can be lifted out. All within three seconds, using only your hands.

Innovative design solutions that improve reliability. And make work easier for you.



Vibration insulated stop button

To further improve the reliability of the saw the stop button is located on the insulated handle unit, where it is easily accessible and protected from vibration.

Sawdust vents in clutch cover

To prevent sawdust gathering around the clutch and jamming it, we have put vents in the clutch cover to allow dust and particles to escape.

The Husqvarna 371XP has numerous ingenious design solutions that improve the reliability and life of the saw. We have already mentioned Air Injection, which reduces engine wear. We have insulated the carburettor from the engine to reduce wear on moving carburettor components and make the saw run more smoothly. Another advantage is that the rubber hose that connects the carburettor conducts less heat, which makes the saw easier to start when hot. We have also positioned the saw stop button on the insulated handle unit, safe from vibration. The Smart Start decompression valve that reduces compression in the cylinder, reduces the load on the starter mechanism at the same time. The pulley also has a new carrier that spreads the load over a larger area at the moment of starting, reducing wear even further.

Smart Start

The decompression valve reduces compression in the cylinder, which markedly reduces the resistance in the starting handle when you start the saw. Not only convenient for you, it also reduces the strain on the starting mechanism.



"SMART START IS REALLY USEFUL, ESPECIALLY ON STEEP SLOPES OR ROUGH GROUND."

DON VAUGHAN



Husqvarna 371XP is very easy to service. The air filter cover and air filter can be removed without tools. Otherwise, the only tool you will need is our universal spanner. This allows you to carry out all regular service your chain saw requires.

Another service feature that was widely appreciated by our test loggers was the "unlosable screws". If you remove the engine cover or starter mechanism there is no need to keep an eye on the small screws. They remain in the covers. Just one small detail that makes things easier for you.

The Husqvarna 371XP is designed to be reliable, durable and have a long working life.

Husqvarna's attention to detail makes life a little easier for you.

Both at work and afterwards.

"THE 371XP IS VERY POWERFUL
AND SMOOTH TO USE.
I DON'T FEEL SO TIRED IN
THE EVENING."

DON VAUGHAN





Husqvarna 371XP. Made for professionals. By professionals.

CYLINDER VOLUME	71 cm ³
POWER	3.9 kW/5.3 hp
SPEED AT PEAK POWER	9,600 rpm
TANK CAPACITY FUEL/OIL	0.77/0.42 l
WEIGHT, SAW BODY	5.9 kg/13 lbs
CHAIN PITCH	3/8"
RECOMMENDED BAR LENGTH	15"–28"
*VIBRATION, FRONT/REAR	3.1/4.6 m/s ²
NOISE, POWER/PRESSURE	110/103 dBA

*WEIGHTED CE-VALUES

Husqvarna's 371XP is a saw for professional users who set very high standards.

New technology has produced a very powerful and reliable engine.

The new design ensures excellent ergonomic handling and makes work safer.

The Husqvarna 371XP is our most advanced chain saw.

So far.

Husqvarna

HUSQVARNA CARRIES OUT CONTINUOUS PRODUCT DEVELOPMENT AND RESERVES THE RIGHT TO CHANGE DESIGNS, SPECIFICATIONS AND EQUIPMENT LEVELS WITHOUT PRIOR NOTICE. ALL PRODUCTS THAT HAVE MOVING PARTS CAN BE DANGEROUS IF USED INCORRECTLY ALWAYS READ THE INSTRUCTIONS CAREFULLY FIRST.