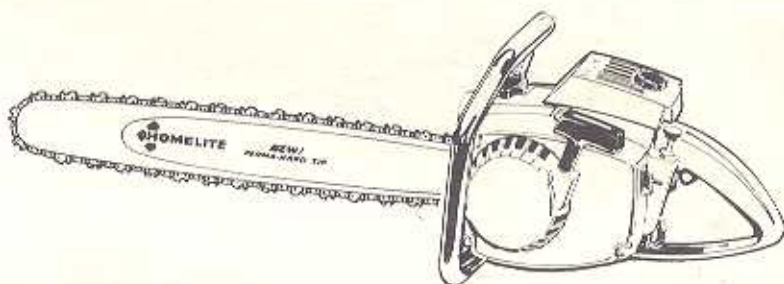


PRICE 35¢

# PARTS LIST

# XL-12 SUPER XL-12 XL-15

# HOMELITE®



# XL

## CHAIN SAWS

PART NO 23817A Rev 3

Printed in U.S.A.

1268

# HOMELITE XL CHAIN SAWS

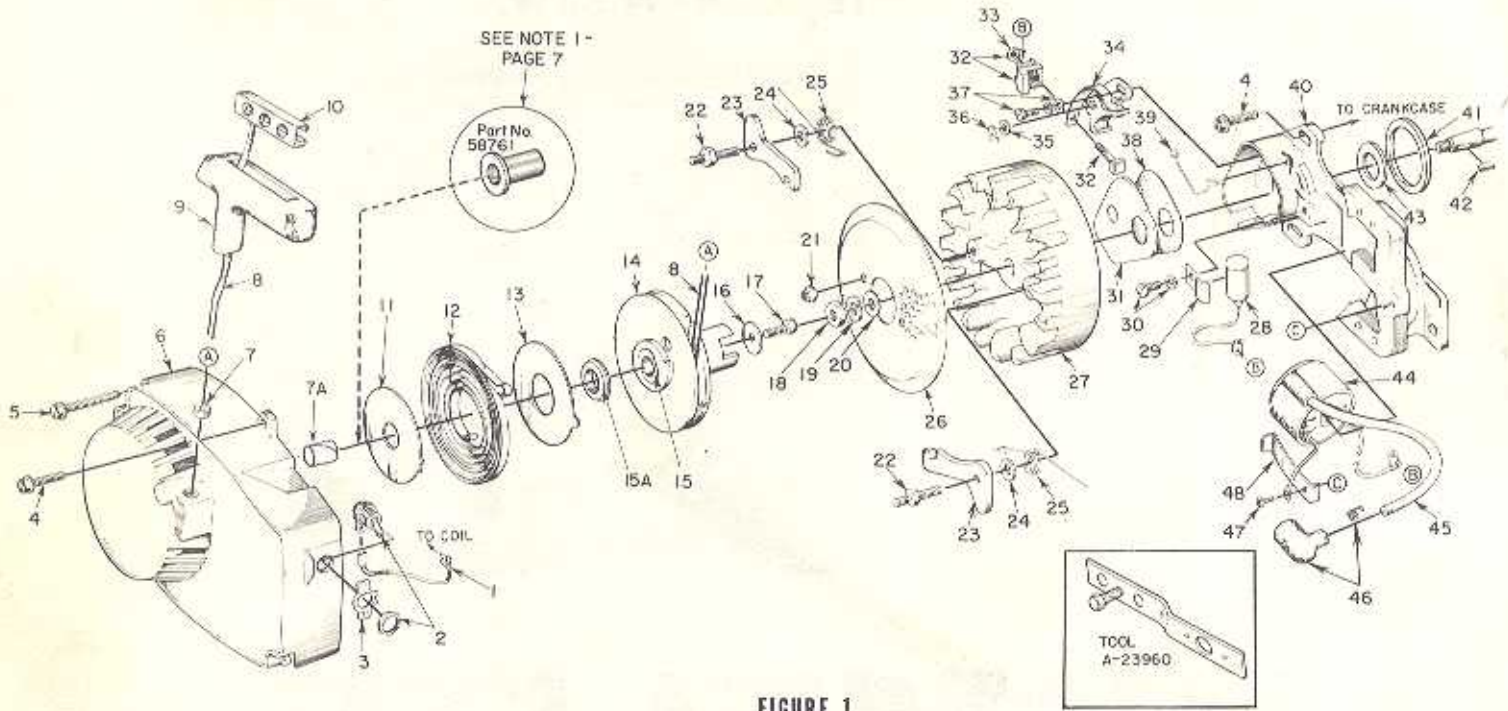


FIGURE 1

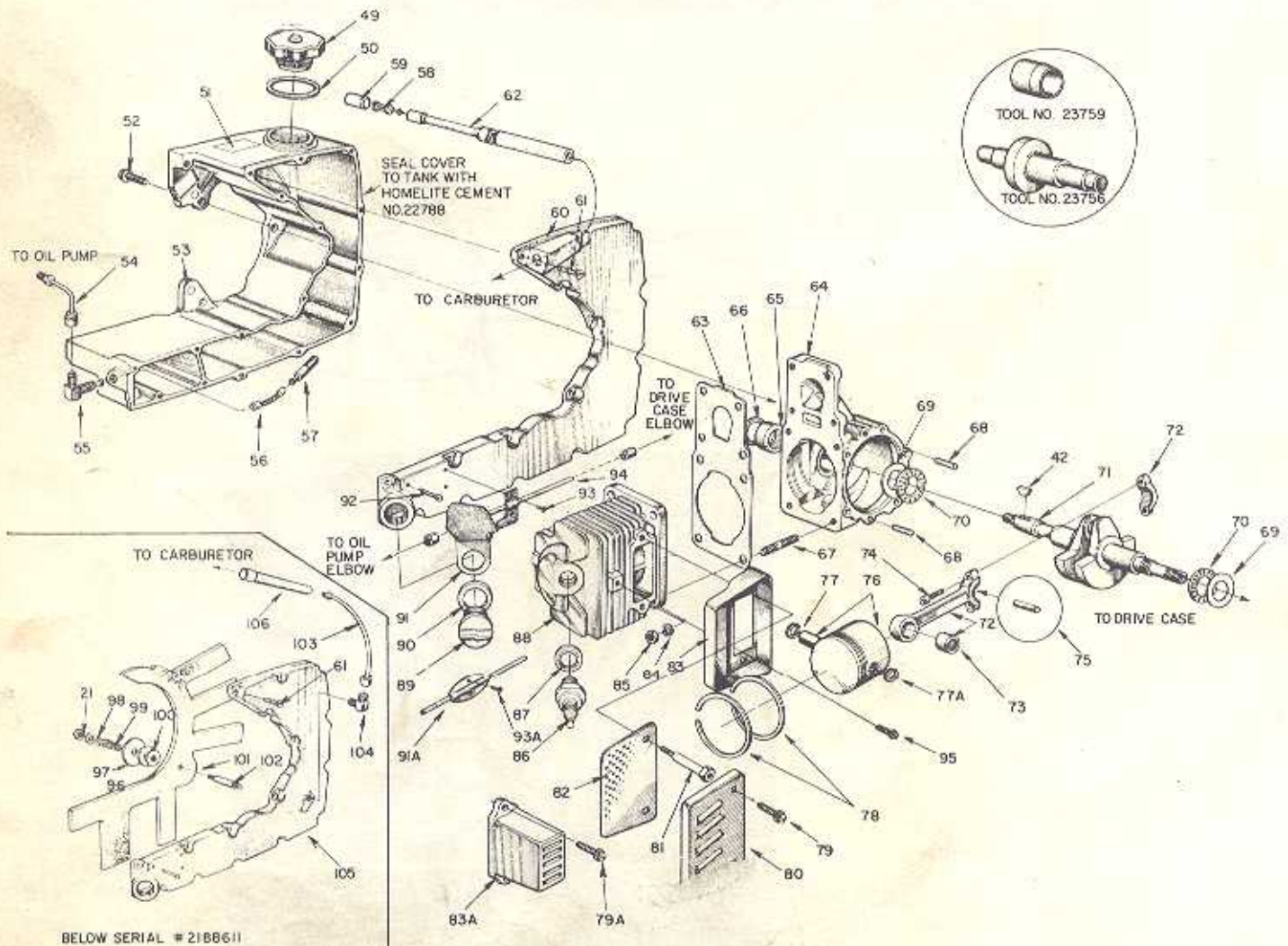


FIGURE 2

ALWAYS FURNISH MODEL AND SERIAL NUMBER WHEN ORDERING PARTS.

# HOMELITE XL CHAIN SAWS

Parts used in each model are indicated by an (x) in the corresponding model column; a (✓) indicates an optional part available from your dealer.  
Refer to NOTES on page 7

No.	Description	Part No.	XL 12	SUPER XL 12	XL 13	Qty.	No.	Description	Part No.	XL 12	SUPER XL 12	XL 13	Qty.
1	LEAD - ground w/terminal	A-50031	x	x	x	1	32	SCREW - shoulder, 1/4-20 (7)	65467	x	x	x	3
2	SWITCH - w/mut	A-57639-3	x	x	x	1	33	TANK - fuel (8)	58732-4	x	x	x	1
3	PLATE - "On - Off"	72086-A	x	x	x	1	34	LINE - oil	A-59014	x	x	x	1
4	SCREW - hex, 12-24 x 5/8	80676	x	x	x	4	35	VALVE - check	A-59016	x	x	x	1
5	SCREW - hex, 12-24 x 1 11/16	58963	x	x	x	3	36	LINE - oil filter	59069	x	x	x	1
6	HOUSING - fan (1)	A-64516	x	x	x	1	37	FILTER - oil	A-59069	x	x	x	1
7	Includes: BUSHING - rope	59319	x	x	x	1	38	FILTER ASSEMBLY	A-59252	x	x	x	1
7A	BUSHING - starter post	64443	x	x	x	1	39	Includes: FELT	59253	x	x	x	1
8	ROPE - starter	59806	x	x	x	1	40	COVER - tank	83746-1	x	x	x	1
9	GRIP - rope	59916	x	x	x	1	61	SCREW - rd., 5/8 x 1/2	80613	x	x	x	16
10	INSERT	58847	x	x	x	1	62	LINE - fuel, flexible	62744	x	x	x	1
11	SHIELD - spring (inner)	59639-A	x	x	x	1	63	GASKET	58513	x	x	x	1
12	SPRING - recoil	58764-A	x	x	x	1	64	CRANKCASE (9)	A-58789-D	x	x	x	1
13	SHIELD - spring (outer)	59639-A	x	x	x	1	65	Includes: BEARING	58958	x	x	x	1
14	PULLEY - starter	A-69446	x	x	x	1	66	SEAL	59688-A	x	x	x	1
15	Includes: LOCK - spring	64049-A	x	x	x	1	67	STUD	55871	x	x	x	4
15A	BUSHING - spring lock	64400	x	x	x	1	68	DOWEL - pin	63821	x	x	x	2
16	WASHER - retaining	59763	x	x	x	1	69	RACE - thrust bearing	58725	x	x	x	2
17	SCREW - hex, 10-32 x 1/2	80648	x	x	x	1	70	BEARING - needle thrust	58726	x	x	x	2
18	NUT - hex, 5/16-24	81117	x	x	x	1	71	CRANKSHAFT (28)	63497	x	x	x	1
19	WASHER - lock, 5/16	83602	x	x	x	1	72	ROD - connecting (29)	A-63477	x	x	x	1
20	WASHER - flat, 5/16	84056	x	x	x	1	73	Includes: BEARING	58724	x	x	x	1
21	NUT - lock, 10-32	81108-2	x	x	x	2	74	SCREW	80889	x	x	x	2
22	STUD - shoulder	58757-B	x	x	x	2	75	ROLLERS - needle (set of 31) (30)	A-63496	x	x	x	1
23	PAWL - starter	58756	x	x	x	2	* 76	PISTON & PIN - 1 3/4" bore (11)	A-58903-C	x	x	x	1
24	WASHER	58851	x	x	x	2		PISTON & PIN - 1 13/16" bore	A-59468-C	x			1
25	SPRING - starter finger	58758	x	x	x	2	77	Includes: RING - retaining	75120	x	x	x	1
26	SCREEN - starter	58765	x	x	x	1	77A	RING - retaining	64813	x	x	x	1
27	ROTOR - magneto	"W" 59809	x	x	x	1	78	PISTON RING - 1 3/4" bore	58877	x	x	x	2
	ROTOR - magneto	"P" 59857	x	x	x	1		PISTON RING - 1 13/16" bore	59436	x			2
28	CONDENSER (2)	"W" 63250	x	x	x	1	79	SCREW - hex, 10-32 x 5/16	90826	✓	x	✓	2
	CONDENSER - w/clamp	"P" 59862	x	x	x	1	79A	SCREW - hex, 12-24 x 3/4	80867	x	x	x	2
29	CLAMP - condenser	"W" 59822	x	x	x	1	80	CAP - muffler (12)	A-63246	✓	x	✓	1
30	SCREW GROUP - condenser	"W" 30261	x	x	x	1	81	STUD (12)	59965-A	✓	x	✓	2
	SCREW GROUP - condenser	"P" 57750	x	x	x	1		STUD	59801-A	✓	✓	✓	2
31	COVER - breaker box	"W" 59811	x	x	x	1	82	BAFFLE	59650	✓	x	✓	1
	COVER - breaker box	"P" 59864	x	x	x	1	83	BODY - muffler (3 holes) (13)	A-59049-A	✓	✓	✓	1
32	TERMINAL BLOCK GROUP	"W" A-58934	x	x	x	1		BODY - muffler	A-59993-A	✓	✓	✓	1
33	NUT (only) - terminal	"P" 55992	x	x	x	1	83A	MUFFLER	58584-2	x	x	x	1
34	POINT SET - w/felt	"W" A-58914	x	x	x	1	84	WASHER - lock, 1/4	83009	x	x	x	4
35	Includes: WASHER - point	"W" 28028	x	x	x	1	85	NUT - 1/4-28	81680-2	x	x	x	4
36	CLIP - post	"W" 29008	x	x	x	1	86	SPARK PLUG (24)	63710-8	x	x	x	1
37	POINT SET - w/felt and terminal block	"P" A-59861	x	x	x	1	87	Includes: GASKET	25038	x	x	x	1
37	SCREW GROUP - points	"W" 76421	x	x	x	1	88	CYLINDER - 1 3/4" bore (14)	58768-4	x	x	x	1
	SCREW GROUP - points	"P" 57749	x	x	x	1		CYLINDER - 1 13/16" bore	58786-B1	x			1
38	GASKET - cover	"W" 58810	x	x	x	1	89	CAP - oil filler	A-64310	x	x	x	1
	GASKET - cover	"P" 59865	x	x	x	1		CAP - oil filler, slotted type	A-56580-1	✓	✓	✓	1
38	SPRING - cover (clip)	"W" 76413	x	x	x	1	90	Includes: GASKET	54667	x	x	x	1
	SPRING - cover (clip)	"P" 59866	x	x	x	1	91	SHIELD	59559	✓	x	✓	1
40	BOX - breaker (4)	"W" 58875-A	x	x	x	1	91A	PLATE	59016-2	x	✓	x	1
	BOX - breaker	"P" 59859	x	x	x	1	92	PIN - cotter	86391	x	x	x	1
41	GASKET	59539	x	x	x	1	93	SCREW - pan, 4-40 x 3/16	86658	✓	x	✓	2
42	KEY - rotor	75079	x	x	x	1	93A	SCREW - pan, 4-40 x 1/4	80919	x	✓	x	2
43	SEAL - felt (5)	59790	x	x	x	1	94	LINE - oil	A-59012	x	x	x	1
44	COIL	"W" 58874	x	x	x	1	95	SCREW - pan, 12-24 x 1/2	80963	x	x	x	1
	COIL	"P" 59880	x	x	x	1	96	WASHER - flat	59457	x	x	x	1
45	LEAD - high tension	58966	x	x	x	1	97	WASHER - wick	58866	x	x	x	1
46	TERMINAL (24)	A-33065	x	x	x	1	98	WASHER - flat, #10	84003-1	x	x	x	1
47	SCREW - coil clip	"W" 58872	x	x	x	1	99	SPRING - compression	58867	x	x	x	1
	SCREW - coil clip	"P" 59877	x	x	x	1	100	GASKET	58985	x	x	x	1
48	CLIP - coil retaining (6)	"W" 63726	x	x	x	1	101	WICK - fuel	58862	x	x	x	1
	CLIP - coil retaining	"P" 59883	x	x	x	1	102	STUD - wick	58519	x	x	x	1
49	CAP - fuel filler (10)	A-64148-1	x	x	x	1	103	LINE - fuel, formed	A-59007	x	x	x	1
50	Includes: GASKET	65358	x	x	x	1	104	ELEWOW - fuel line	58995	x	x	x	1
	VALVE - vent (not shown)	63718	x	x	x	1	105	COVER - fuel tank	58739-3	x	x	x	1
51	DECAL - caution	64144	x	x	x	1	106	LINE - fuel (3)	58958	x	x	x	1

\*Denotes new parts

Ignition Type - "W" indicates Wico, "P" indicates Phelon.  
DO NOT INTERCHANGE PARTS

ALWAYS FURNISH MODEL AND SERIAL NUMBER WHEN ORDERING PARTS.

# HOMELITE XL CHAIN SAWS

Parts used in each model are indicated by an (x) in the corresponding model column; a (A) indicates an optional part available from your dealer.  
Refer to NOTES on page 7

No.	Description	Part No.	XL 12 SUPER XL 12 XL 15	Qty.	No.	Description	Part No.	XL 12 SUPER XL 12 XL 15	Qty.
1	GASKET	58537-A	x x x	2	* 41	KIT - bumper	A-59043	/ / x	1
2	SPACER - carburetor	58780	x x x	1	41A	Includes: SCREW - hex, 12-24 x 3/4	80867	/ / x	2
3	LINE - fuel (3)	63744	x x x	1	42	NUT - 12-24	81068	/ / x	2
4	CARBURETOR (15)	A-58767-C	x x x	1	43	WASHER - lock, #12	83056	/ / x	2
* 5	CARBURETOR - alternate	A-65962	x x x	1	44	SCREW - socket, 1/4-20 x 1	80429	x x x	1
6	PIN - cotter	86324	x x x	1	45	HANDLE BAR	A-59793	x x x	1
7	ROD - choke	A-58826	x x x	1	46	FITTING - oil	56707	x x x	1
8	COVER - air filter	58773-5	x x x	1	47	GASKET (19)	63355	x x x	1
9	NUT - cover	A-58882	x x x	1	48	DRIVECASE	A-58925-A	x x	1
10	RING - retaining	58319-A	x x x	1		DRIVECASE	A-65560	x	1
11	FILTER ELEMENT (31)	63549	x x x	1	49	Includes: SEAL	58688-A	x x x	1
12	GASKET - mounting stud	58392-1	x x x	1	50	BEARING	58956	x x x	1
13	BRACKET - cover	A-58818-A	x x x	1	51	BOLT - guide bar	58753	x x x	2
14	ROD - throttle	58836	x x x	1	52	SCREW - guide bar adjusting	63225	x x x	1
15	BOOT - rod	58348	x x x	1	53	PIN - bar adjusting	58793-1	x x x	1
16	WASHER - lock, #10	83046	x x x	2	54	NUT - lock, 1/4-20	-81109	x x x	1
17	SCREW - hex, 10-32 x 2 1/4	80481	x x x	2	55	SCREW - hex, 12-24 x 9/16	80899	x x x	5
18	PIN - throttle lock	58924	x x x	1	56	COVER - clutch (27)	63051-1	x x x	1
19	SPRING - lock	59405	x x x	1	57	SHOE - clutch (27)	63052	x x x	3
	COVER - handle	A-58213	x x x	1	58	BACK PLATE (27)	63053-1	x x x	1
	Includes: BUSHING - pin (not shown)	59044	x x x	1	59	SPRING - clutch (27)	63094	x x x	3
20	SCREW - pan, #32 x 1/2	80560	x x x	2	60	BRACKET - handle bar (20)	59246-3	x x x	1
21	RING - retaining	58409	x x x	1	61	PLATE - guide bar (inner)	58781	x x x	1
22	TRIGGER - throttle	58859	x x x	1	62	PLATE - guide bar (outer)	58782	x x x	1
23	SCREW - hex, 12-24 x 7/8	90891	x x x	5	63	SPRING - guide bar	64449	x x x	1
24	GROMMET	58362	x x x	1	64	NUT - 5/16-18	81196	x x x	2
25	BUTTON	57289-1	x x x	2	65	COVER - drivecase	58750-2	x x	1
26	VALVE - check	A-59011	x x x	1	66	NUT - 3/8-24	81192	x x	1
27	HANDLE - throttle	A-59507-A	x x x	1	67	WASHER - flat, 3/8	84010-1	x x	1
	Includes: PLUG (18)	63303	x x x	1	68	WASHER - thrust (outer)	58926	x x	1
	PLUG	71505	x x x	1		WASHER - thrust (outer) (32)	58833	/ /	1
	PIN - cotter	86301	x x x	1	69	SPROCKET & DRUM (21)			
	FELT	63290	x x x	1		Standard - 3/8" pitch, 7 tooth	A-59552	x x	1
28	GROMMET - "Hi - Lo"	59058	x x x	1		Optional - 3/8" pitch, 8 tooth	A-63346	/ /	1
29	SPRING	59293	x x x	1		.404 pitch, 7 tooth	A-59355	/ /	1
30	PLUNGER	A-57834-10	x x x	1	70	Includes: BEARING - needle (22)	72311	x x	1
31	Includes: "O" RING	74388	x x x	1		BEARING - needle (unit cage) (32)	64124	/ /	1
32	"O" RING	59074	x x x	1		New "Splined" type (not shown)			
33	REED	58775	x x x	1		HUB & DRUM (32)	A-65990	/ /	1
34	SPRING - reed	59053	x x x	1		SPROCKET - "Splined"			
35	STOP - reed	59421	x	1		Rim Type - 3/8" pitch, 7 tooth	OM88210	/ /	1
	STOP - reed	58776	x x	1		.404 pitch, 7 tooth	OM10513	/ /	1
36	SCREW - pan, 4-40 x 3/16	80658	x x x	2	71	RACE - inner (23)	65584	x x	1
37	SCREW - idle, 5/16-18 (17)	63302	x x x	1		RACE - inner (32)	65746	/ /	1
38	SCREW - idle, 10-32 (17)	59310	x x x	1	72	WASHER - thrust (inner)	58833	x x	1
39	SPRING (18)	59319	x x x	1	73	COVER - clutch (27)	58751-1	x x x	1
40	SCREW - hex, 12-24 x 3/4	80867	x x x	4	74	SHOE - clutch (27)	58928-1	x x	3
						SHOE - clutch	58928-1	x	6
					75	SPIDER - clutch (27)	58927-1	x x x	1
					76	SPRING - clutch (27)	55123-C	x x x	2

\*Denotes new parts.

## SPECIAL TOOLS (available on order)

A-23937-B	COMBINATION WRENCH (25)	A-23949	PLUG - piston pin removal
A-22808	COMBINATION WRENCH (25)	28800	TOOL - seal assembly (crank and drivecases)
22828	PLIERS - piston snap ring	A-23960	REMOVER AND LOCKING BRACKET - rotor
23528	WRENCH - socket screw (conn. rod)	A-23696	REMOVER - threaded spider (27)
23756	BEARING ASSEMBLY AND DISASSEMBLY - conn. rod	A-23934	CLUTCH SPANNER WRENCH (27)
23757	BEARING ASSEMBLY AND DISASSEMBLY - drive and crankcases	23685	GEAR DRIVE MODELS
23819	PLUG - needle bearing (sprocket)	23772	PLIERS - planetary snap ring
-----	BEARING PULLER - clutch drum (#A-78 Snap-On or equivalent)	A-23792	BEARING ASSEMBLY & DISASSEMBLY - planetary follower
23758	SEAL ASSEMBLY - drive and crankcases	23773	SPROCKET HOLDER
23759	SLEEVE - crankshaft assembly		BEARING ASSEMBLY - clutch drum

## PAINT

23318	SPRAY CAN - blue
22771	SPRAY CAN - red
23343	SPRAY CAN - green
23560	SPRAY CAN - white

ALWAYS FURNISH MODEL AND SERIAL NUMBER WHEN ORDERING PARTS.

# HOMELITE XL CHAIN SAWS

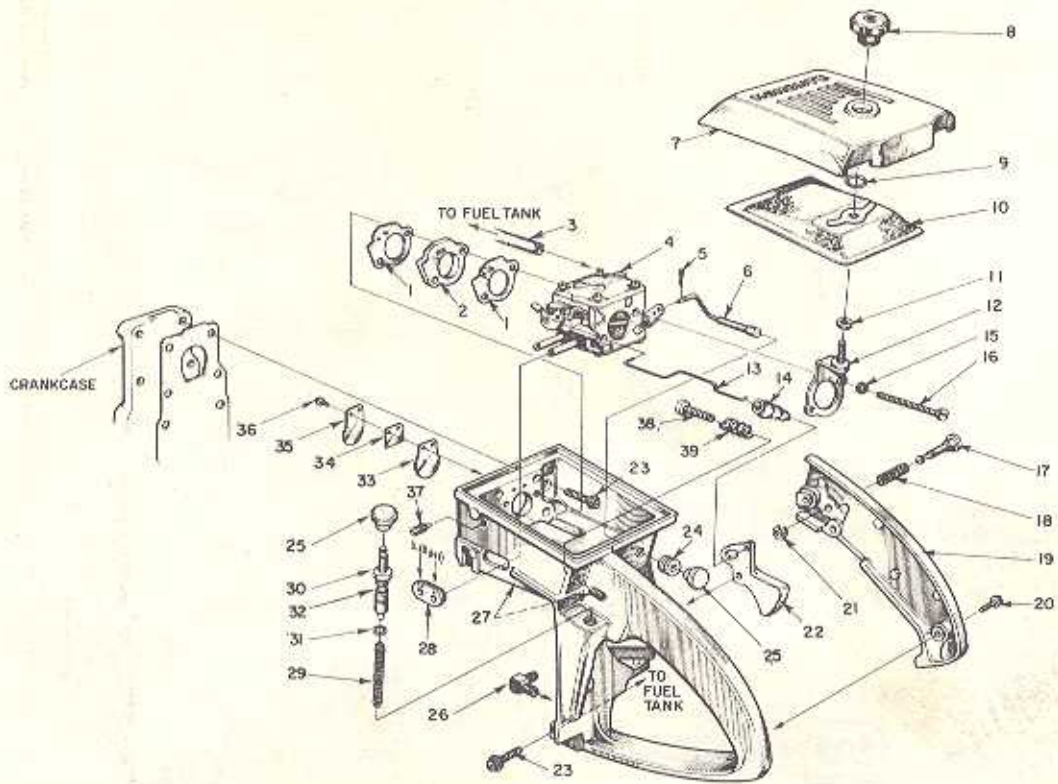


FIGURE 3

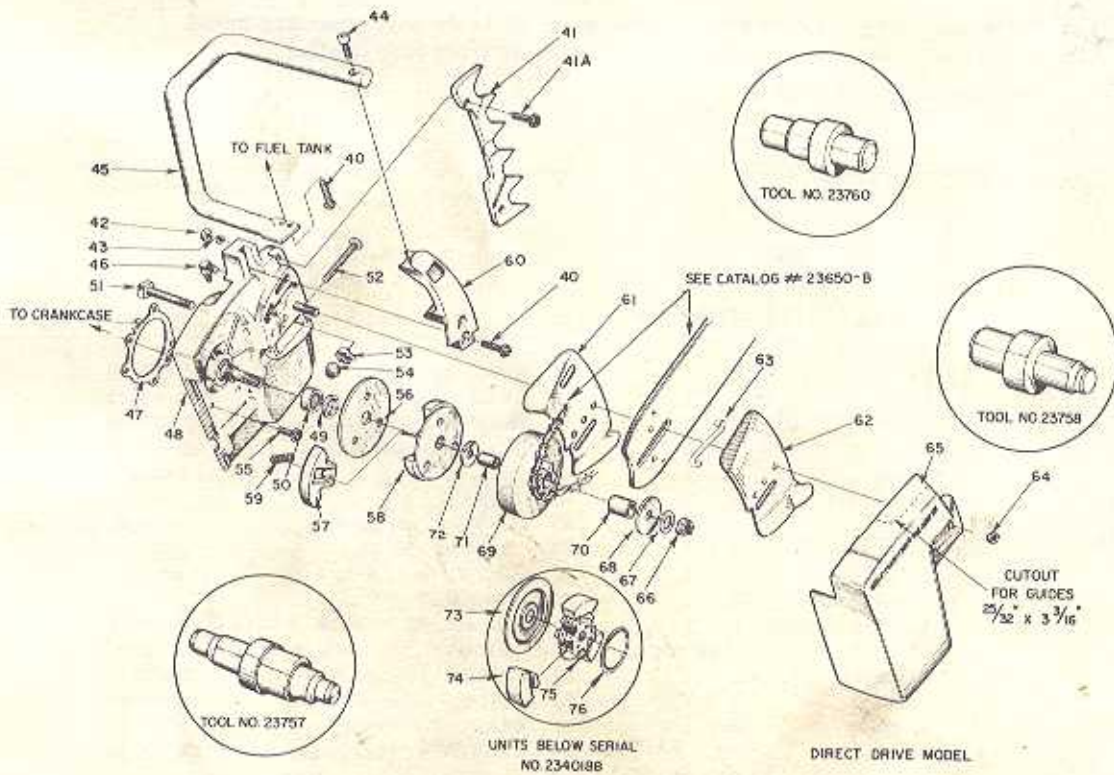


FIGURE 4

ALWAYS FURNISH MODEL AND SERIAL NUMBER WHEN ORDERING PARTS.

# HOMELITE XL CHAIN SAWS

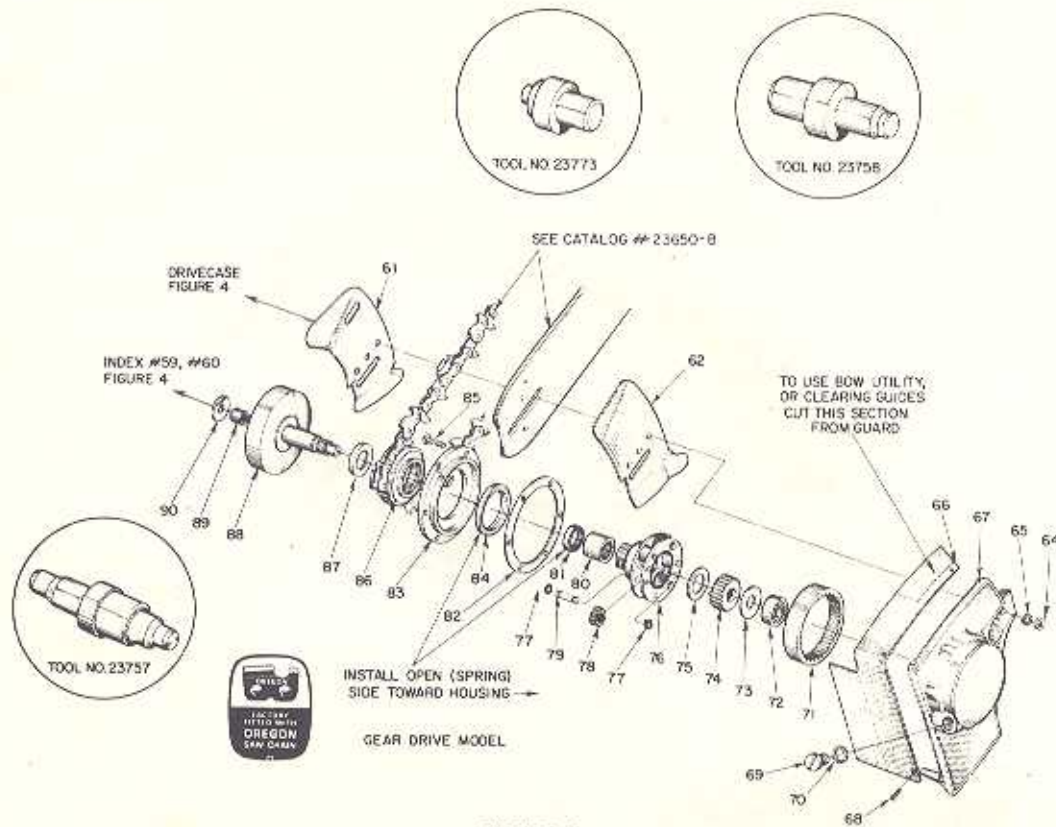


FIGURE 5

Parts used in each model are indicated by an (x) in the corresponding model column; a (A) indicates an optional part available from your dealer.

Refer to NOTES on page 7

No.	Description	Part No.	SUPER XL 12		Qty.	No.	Description	Part No.	SUPER XL 12		Qty.
			XL 12	XL 15					XL 12	XL 15	
61	PLATE - guide bar (inner)	58781	x	x	1	77	RING - retaining	29270	x	6	
62	PLATE - guide bar (outer)	58782	x	x	1	78	GEAR - planet w/bearing	A-59062	x	3	
64	NUT - 5/16-18	81196	x	x	2	79	SHAFT - gear	58953-A	x	3	
65	WASHER - lock, 5/16	84056		x	2	80	BEARING - needle	58952	x	1	
66	GUARD - chain	59071		x	1	81	SEAL	56134-1	x	1	
67	HOUSING - gear w/pins	A-59078-3		x	1	82	GASKET	58947	x	1	
68	SCREW - pan, 10-32 x 3/8	80579		x	3	83	COVER - gear housing	A 59065	x	1	
69	CAP - oil filler	58482		x	1	84	Includes: SEAL	58126	x	1	
70	GASKET	55107		x	1	85	SCREW - pan, 6-32 x 1/2	80630	x	6	
71	GEAR - ring	58107		x	1	86	SPROCKET				
72	BEARING - ball	58120-S		x	1		Standard - 3/8" pitch, 8 tooth	A-59021	x	1	
73	WASHER - thrust	58118-A		x	as req'd.		Optional - .404 pitch, 8 tooth	A-59297	✓	1	
74	GEAR - sun	58109-1A		x	1	87	WASHER - thrust	58949	x	1	
75	WASHER - thrust	59081		x	1	88	SHAFT - drive w/drum	A-58955	x	1	
76	CARRIER - planet	A-59083		x	1	89	BEARING - needle	58951	x	1	
						90	WASHER - thrust (inner)	59219	x	1	

# HOMELITE XL CHAIN SAWS

## NOTES

- (1) HOUSING - A-64516 (w/Starter Post Bushing) supersedes A-59562, A-59290 and A-58803-1. Earlier units using A-58803-1 Housing must be used with removable Flanged Bearing 58761.
- (2) CONDENSER - 63250 supersedes 58817 in Wico ("W") system.
- (3) LINE - 58958 (with Carburetor end expanded) supersedes 58997 in units below serial #2188611.
- (4) BOX - 58875-A (with recess in Crankcase side) supersedes 58875, recess accomodates Felt Seal.
- (5) SEAL - 59760 used only in 58875-A Box.
- (6) CLIP - 63760 supersedes 58873 in Wico ("W") system.
- (7) SCREW - (shoulder) 63407 requires 1/4" holes in Fuel Tank ("F" drill), and 1/4-20 tapped holes in Crankcase. Screw 80867 used to mount early Tanks (3/16" holes) to early Crankcase with 12-24 threads. See NOTE 8 & 9.
- (8) TANK - (service replacement) has 1/4" mounting holes, requires three 1/4-20 x 3/4 Screws (63407) and mating 1/4-20 tapped holes in Crankcase. See NOTE 7 & 9.
- (9) CRANKCASE - (service replacement) has three 1/4-20 tapped holes for Tank mounting Screws. Early Crankcase with 12-24 threads may be tapped out. See NOTE 7 & 8.
- (10) CAP - A-64140-1 supersedes A-59956 with 56865-1 Valve.
- (11) PISTON & PIN - A-58903-A or A-59468-A uses one Retaining Ring (#77), early PISTON & PIN requires two (#77) Rings. A-58903-B and -C or A-59468-B and -C requires one (#77) and one (#77A) Ring.
- (12) CAP - A-63246, (with reinforcing plate inside) supersedes 59051, requires 59065-A Stud (1/16" shorter).
- (13) BODY - A-59049-A requires Cylinder with 3 mounting holes (58706-B1); A-59049 still required on Cylinder with 2 mounting holes. See NOTE 14.
- (14) CYLINDER - (service replacement) 58706-B or 58706-B1 has 3 Muffler mounting holes. A-59049-A Body recommended, A-59049 can be used. See NOTE 13.
- (15) CARBURETOR - A-58767-C supersedes A-58767-B, A-58767-A, and A-58767; supplied with Idle Stop Screw and Spring (internal idle adjustment), remove these parts when using either index #37 or #38 with #39. Refer to Carburetor Parts List #23766-C. Use Repair Parts Kit #58972, Gasket Set #58971.
- (16) PLUG - 63303 (5/16-18) plugs tapped holes for index #37, 71505 (10-32) plugs hole for index #38.
- (17) SCREW - 63302 used with A-58767-C Carburetor only. 59310 requires Spring 59319.
- (18) SPRING - 59319 required with 59310 Screw.
- (19) GASKET - 63355 supersedes "O" RING.
- (20) BRACKET - 59246-3 supersedes 58766.
- (21) SPROCKET & DRUM - A-59552 (with Needle Bearing) supersedes A-58797 (with Sleeve Bearing), see NOTE 23. A-59553 (with Needle Bearing) supersedes A-59309 (with Sleeve Bearing). See NOTE 23.
- (22) BEARING - 72311 Needle Bearing required with A-59552 and A-59553 Sprocket & Drum, See NOTE 23. 58784 Sleeve Bearing required with A-58797 and A-59309 Sprocket & Drum, See NOTE 23.
- (23) RACE - 55584 required with 72311 Needle Bearing. 58737 required with 58784 Sleeve Bearing.
- (24) SPARK PLUG - 63710-S (CJ-8) Plug available only with standard Electrodes - use A-33055 Terminal. 58917-S (TJ-8J) Plug and 59558-S (UTJ-11P) Plug with Platinum Electrodes use 58918 Cover and 58919 Spring.
- (25) COMBINATION WRENCH - A-23937-B Wrench is used with 63710-S Plug. A-22808 is used with 58917-S and 58558-S Plugs.
- (26) SPARK ARRESTOR - When A-63500 is used with A-63080 Noise Suppressor use 63503-1 Stud Shim (.060) without A-63080 use 63503 Stud Shim (.030).
- (27) CLUTCH ASSEMBLY - For units below serial #2340188 order parts as illustrated or convert Clutch Assembly by ordering A-63608 Clutch and Cover Assembly. A-23696 Remover used on units below serial #2340188, A-23934 used for later units.
- (28) CRANKSHAFT - Units below serial #2079523 use 58439.
- (29) CONNECTING ROD - Units below serial #2079523 use A-58769.
- (30) ROLLERS, SET - Units below serial #2079523 use A-58864 (28 rollers per set).
- (31) FILTER ELEMENT - A-63589 supersedes 58774-1. Gasket 58884 is still available for 58774-1 Filter.
- (32) HUB & DRUM - Optional index #68, #70, #71, and A-65990 Hub & Drum must be used as a complete set. Kit A-67090, containing these parts, is available at your dealer. Sprocket of desired pitch must also be ordered.

### ACCESSORIES

A-63442	EXCHANGER - heat
A-63080	SUPPRESSOR - noise (26)
A-63500	SPARK ARRESTOR (26)
A-59681	KIT - planetary drive (3/8" pitch)



**HOMELITE**

A **extron** DIVISION • PORT CHESTER, NEW YORK