

# PARTS LIST

PART NO. 24602

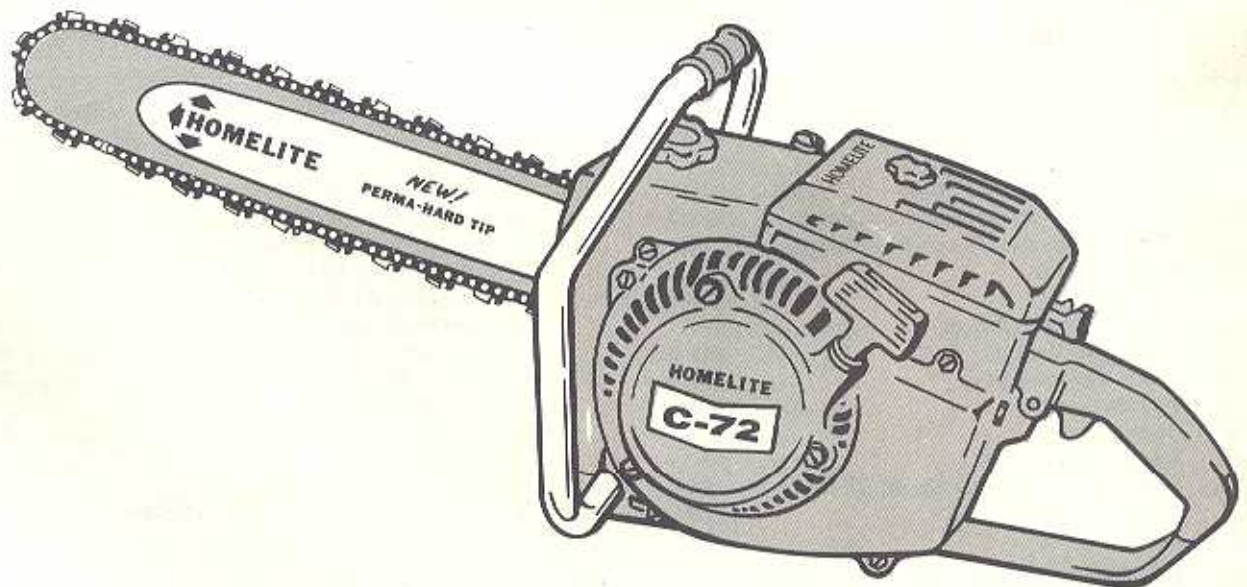
PRINTED IN U.S.A.

PRICE .35

# HOMELITE<sup>®</sup>

## CHAIN SAW

# C-72



# HOMELITE **TEXTRON**

Homelite Division of Textron Inc.

# C-72 CHAIN SAW

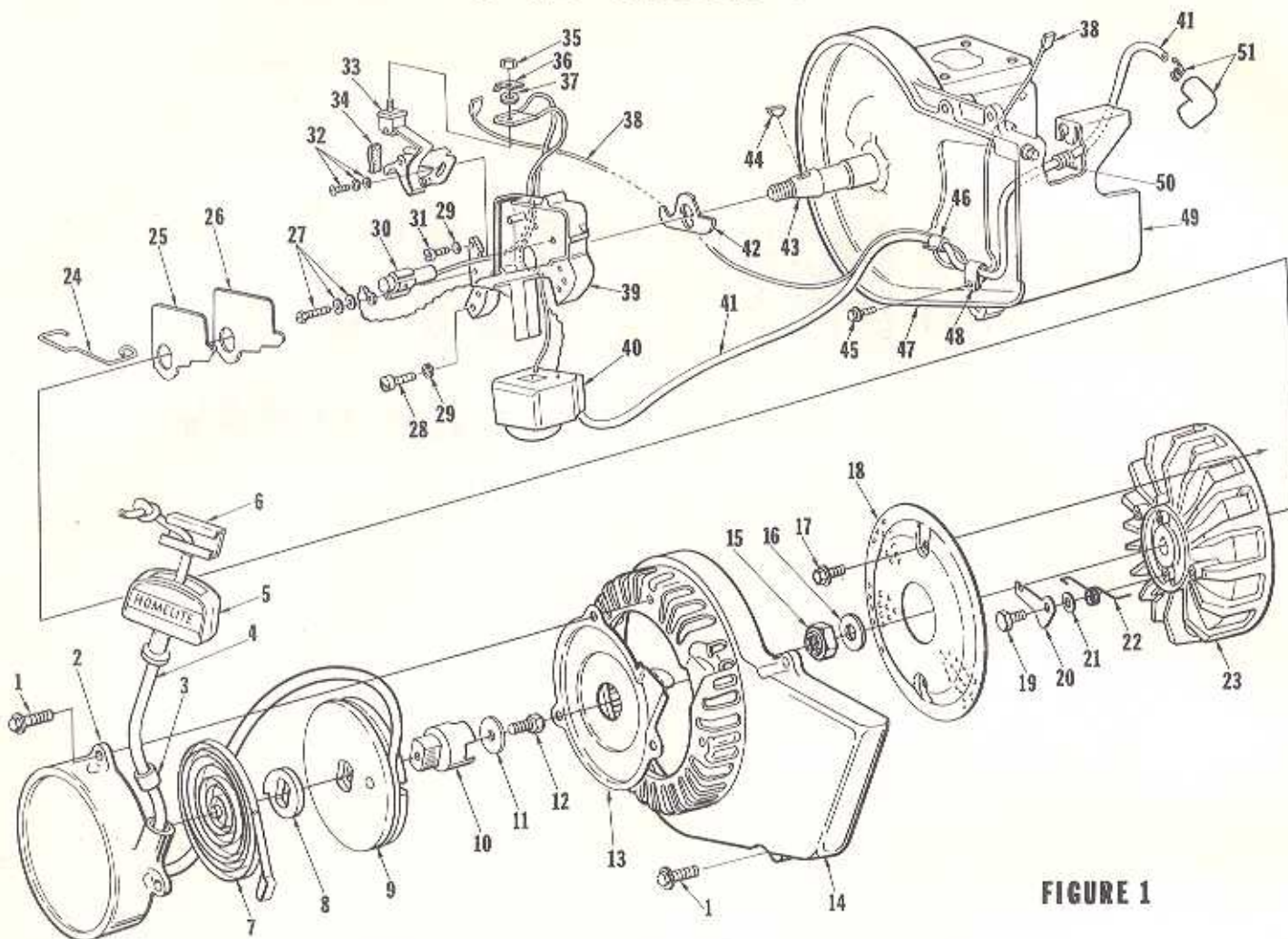


FIGURE 1

No.	Description	Part No.	Qty.	No.	Description	Part No.	Qty.
1	SCREW-hex hd., 12-24 x 3/4	80867	7	25	COVER-breaker box	55979	1
*2	STARTER-rewind	A-64178-3A	1	26	GASKET-breaker box cover	55978-2	1
	Includes:			27	SCREW-condenser	57750	1
3	BUSHING-starter cover	67177	1	28	SCREW-flt hd., 10-24 x 7/8	80660	2
*	BUSHING-starter post (not shown)	64443-1	1	29	WASHER-lock, #10	83046	3
	BUSHING-starter cup (not shown)	65830	1	30	CONDENSER-w/terminal	55987	1
4	ROPE-starter	58806	1	31	SCREW-flt hd., 10-24 x 1/2	80595	1
5	GRIP-rope	55937	1	32	SCREW-breaker points	57749	1
6	INSERT-rope retaining	58517	1	33	POINTS-breaker	A-58165	1
7	SPRING-rewind	64180-A	1	34	Includes: WIPER-cam	55984	1
8	LOCK-rewind spring	64049-A	1	35	NUT-terminal	55982	1
9	PULLEY-starter	64050-1	1	36	TAB-ground	57733	1
10	CUP-starter	67139	1	37	WASHER-terminal	55983	1
11	WASHER-retaining	58763	1	38	LEAD-ground w/terminal	A-58321	1
12	SCREW-hex hd. spinlock, 10-32 x 1/2	86648	1	39	BOX-breaker w/core	57744	1
13	SHIELD-sawdust	64052	1	40	COIL-ignition w/ground terminal	55986-A	1
14	HOUSING-fan	59094-I	1	41	LEAD-high tension	58382	1
15	NUT-lock, 7/16-20	81104	1	42	SEAL-breaker box	56292-A	1
16	WASHER-flat, 7/16	84047	1	43	CRANKSHAFT	59270-2	1
17	SCREW-hex hd. spinlock, 10-24 x 3/8	80869-1	2	44	KEY-woodruff	75078	1
18	SCREEN-rotary	64055	1	45	SCREW-hex hd., 10-24 x 3/8	80869-1	1
19	STUD-starter pawl	64054	2	46	SLEEVE	55290	1
20	PAWL-starter	58756	2	47	CRANKCASE (See Figure 2)	A-58317-B1	1
21	WASHER	58851	2	48	CLAMP-lead	56014	1
22	SPRING-starter pawl	58758-1	2	49	SHIELD-cylinder	A-59919-1	1
23	ROTOR	64053-A	1	50	GROMMET	68046	1
24	CLIP-cover	55980	1	51	TERMINAL-spark plug	A-55373-A	1

\*Denotes new parts

# C-72 CHAIN SAW

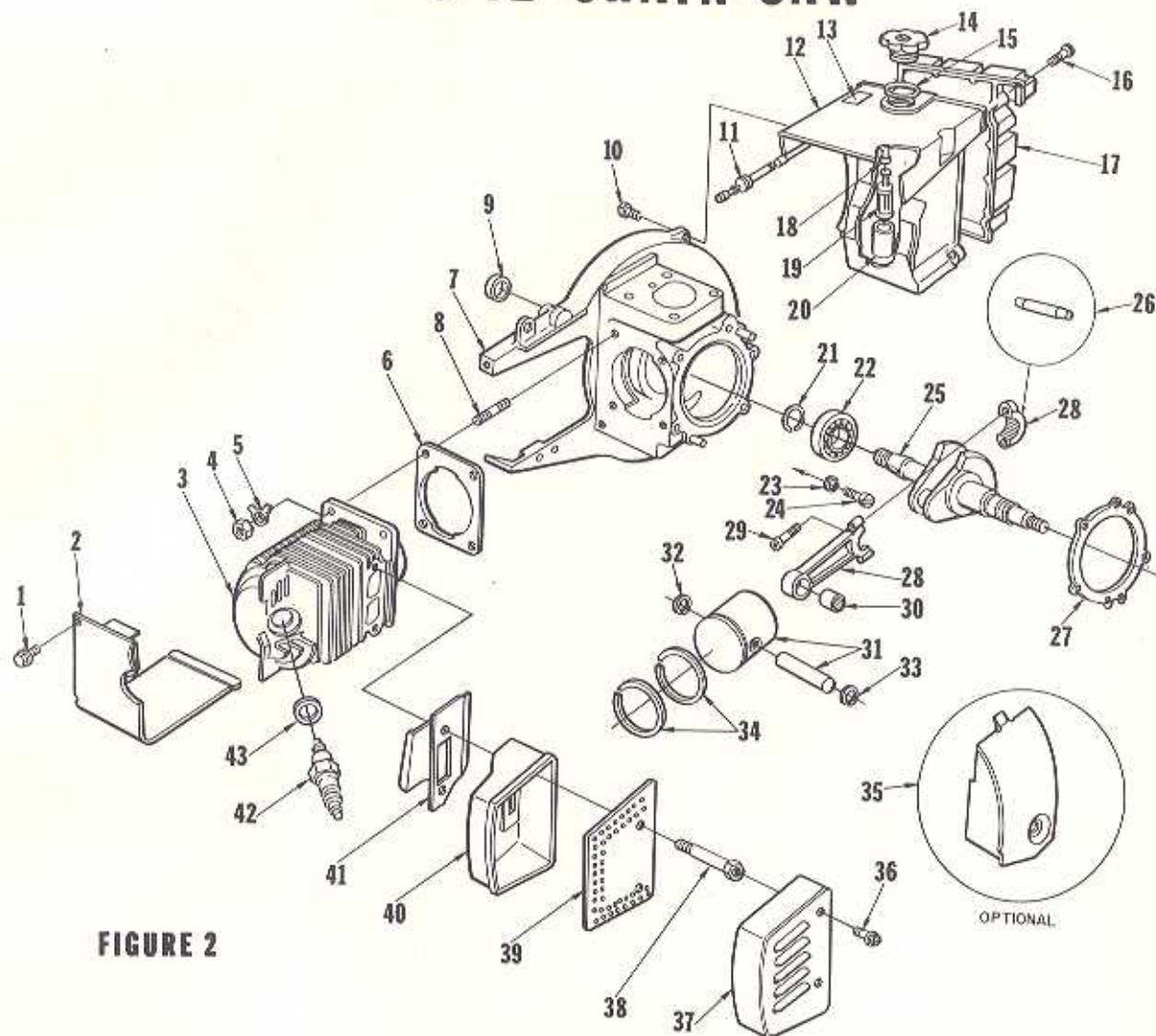


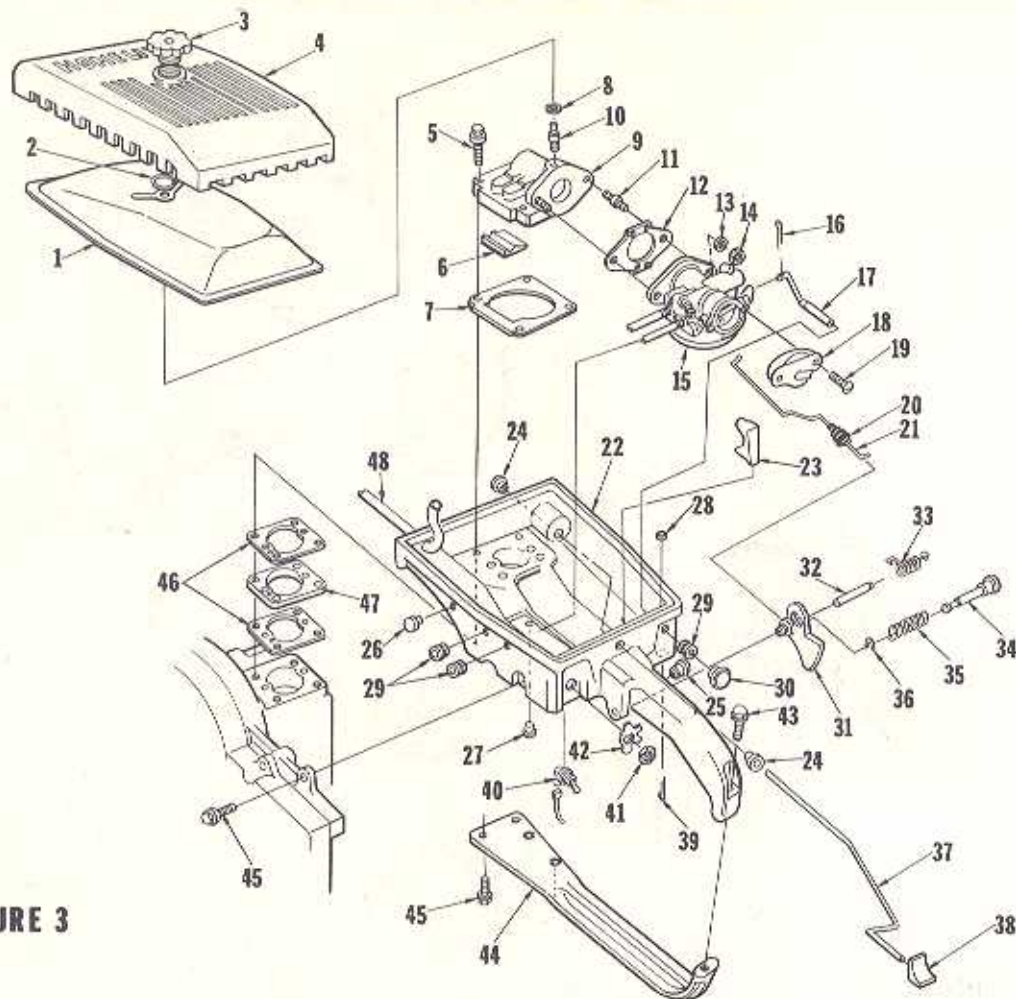
FIGURE 2

No.	Description	Part No.	Qty.	No.	Description	Part No.	Qty.
1	SCREW-hex hd., 10-24 x 3/8	80869-1	2	22	BEARING-ball	58190-S	1
2	SHIELD-cylinder	A-59919-1	1	23	WASHER-lock	83061	2
3	CYLINDER-2" bore	58174-2	1	24	SCREW-bearing retainer	19238-3	2
4	NUT-hex, 1/4-28	81065-2	4	25	CRANKSHAFT	59270-2	1
5	WASHER-lock, 1/4	83009	4	26	ROLLERS-set of 27	A-65615	1
6	GASKET-cylinder	58292	1	27	GASKET-crankcase	63356	1
7	CRANKCASE	A-58317-B1	1	28	ROD-connecting	A-59483-1	1
	Includes:				Includes:		
8	STUD	55871	4	29	SCREW	80805	2
9	SEAL	58308-A	1	30	BEARING-needle	59351	1
10	SCREW-hex hd., 12-24 x 3/4	80867	4	31	PISTON & PIN	A-58653-B	1
11	FITTING-fuel outlet	58364	1		Includes:		
12	TANK-fuel	58172-4	1	32	RING-retaining	64742	1
13	DECAL-caution	64144	1	33	RING-retaining	55095	1
14	CAP-fuel tank	A-64140-1	1	34	PISTON RING	55038	2
	Includes:			35	EXCHANGER-heat (Note 1)	† 59279	1
15	VALVE-vent (not shown)	63718	1		MUFFLER	A-59652	1
	GASKET	65358	1		Includes:		
16	SCREW-rd. hd., #6 x 1/2	80513	15	36	SCREW-hex hd., 12-24 x 3/8	80837	2
17	COVER-fuel tank	58173-1	1	37	CAP-muffler	58425-A	1
	GASKET-fuel tank cover (not shown)	† 58367	1	38	STUD-muffler	59337	2
18	LINE-fuel (flexible)	55805	1	39	BAFFLE-muffler	58423-A	1
19	FILTER-fuel	A-59251	1	40	BODY-muffler	A-58419	1
	Includes:			41	DEFLECTOR-air (Note 1)	58639	1
20	FILTER-felt	59253-1	1	42	SPARK PLUG	40190-S	1
21	RING-retaining	58319-A	1	43	Includes: GASKET	25038	1

† Optional

Note 1 - When 59279 Heat Exchanger is installed remove 58639 Air Deflector.

# C-72 CHAIN SAW

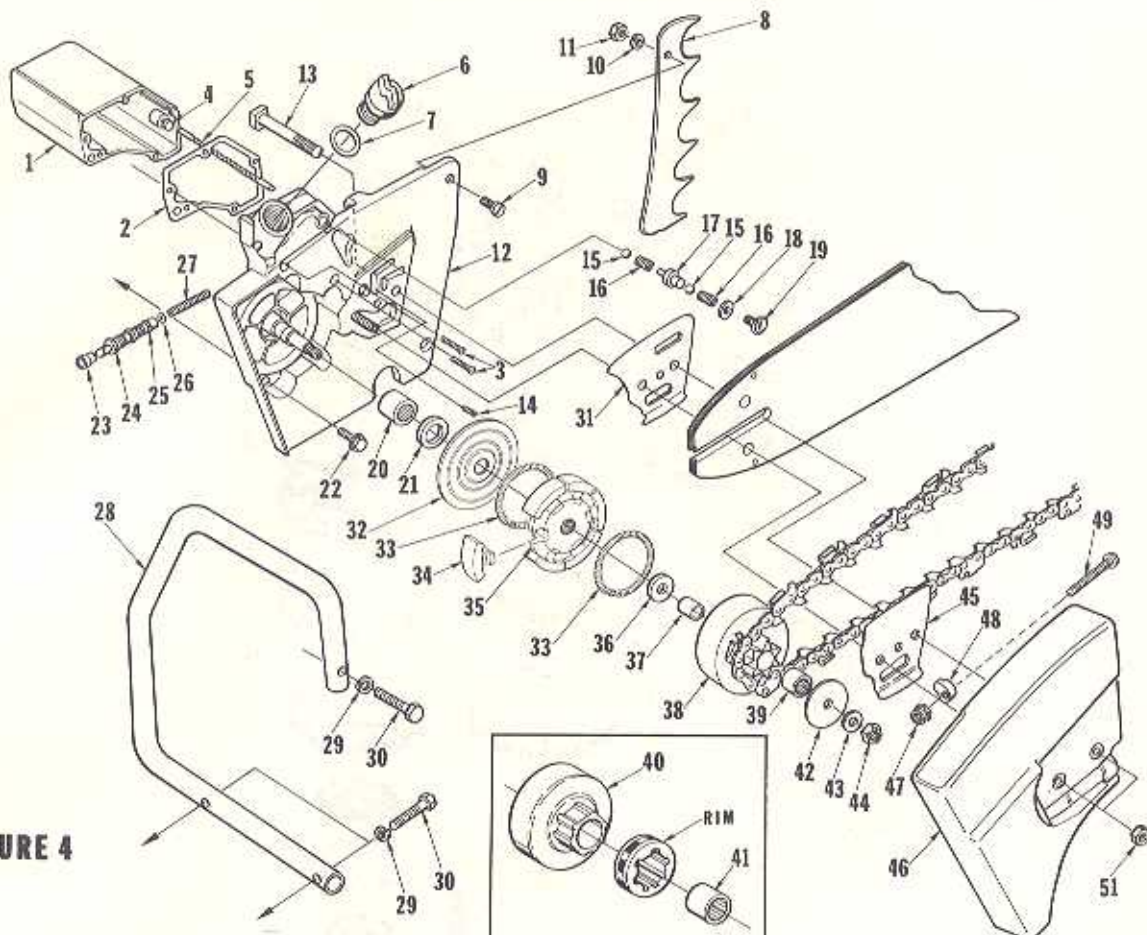


**FIGURE 3**

No.	Description	Part No.	Qty.	No.	Description	Part No.	Qty.
1	FILTER ELEMENT-air	63728	1	28	WASHER-felt	63290	1
2	RING-retaining	58319-A	1	29	GROMMET	58362	3
3	NUT-cover	A-59229	1	30	BUTTON-choke rod	57289-1	1
4	COVER-air filter	59230-1	1	31	TRIGGER-throttle	58181-A	1
5	SCREW-hex hd., 12-24 x 1-1/2	80868	4	32	SHAFT-trigger	58353	1
6	FILLERBLOCK	58933	1	33	SPRING-throttle	58352-A	1
7	GASKET-elbow	58344	1	34	PIN-throttle latch	58404	1
8	GASKET-stud	58392	1	35	SPRING-throttle latch	58405	1
9	ELBOW-reed	A-59490	1	36	RING-retaining	58409	1
	Includes:			37	ROD-oil pump	58356-B	1
10	STUD-cover	58361	1	38	BUTTON-oil rod	58357	1
11	STUD-carburetor	27464	2	39	COTTER PIN-1/16 x 1/2	86301	1
12	GASKET-carburetor	55553-3	1	40	SWITCH-toggle	A-57650-3	1
13	WASHER-lock, 1/4	83009	2	41	Includes: NUT	72084-A1	1
14	NUT-hex, 1/4-20	81013-1	2	42	PLATE-"On - Off"	72085-A	1
15	CARBURETOR	A-59427-A	1	43	SCREW-hex hd., 12-24 x 1	80864	1
16	COTTER PIN-1/32	86324	1	44	BRACE-throttle handle	58185-A1	1
17	ROD-choke	A-58354	1	45	SCREW-hex hd., 12-24 x 3/4	80867	3
18	DEFLECTOR-carburetor air	58837-2	1	46	GASKET-spacer	58343	2
19	SCREW-pan hd., 10-32 x 1/2	80625	2	47	SPACER-carburetor	58391	1
20	BOOT-throttle rod	58348	1	48	LINE-fuel	55680	1
21	ROD-throttle	59338-A	1				
22	HANDLE-throttle	A-63665	1				
	Includes:						
23	STOP-rod	58930	1				
24	BUSHING-rod	58929	2				
25	BUSHING-latch pin	59064	1				
26	PLUG-button	64607	1				
27	PLUG-button	A-64744	1				
	Includes:						
	"O" RING (not shown)	59785	1				

# C-72 CHAIN SAW

FIGURE 4



No.	Description	Part No.	Qty.	No.	Description	Part No.	Qty.
1	RESERVOIR-oil Includes: 2 GASKET-reservoir 3 SCREW-flt., 8-32 x 3/4 COTTER PIN- (not shown)	A-58341-A	1	30	SCREW-hex, 5/16-18 x 1-1/2	80087	3
2	GASKET-reservoir	67122	1	31	PLATE-guide bar (inner)	56871-A	1
3	SCREW-flt., 8-32 x 3/4 COTTER PIN- (not shown)	82156	5	32	COVER-clutch	56101-A	1
4	FILTER-oil	A-58828	1	33	SPRING-clutch	55123-C	2
5	LINE-oil pickup	58340-B	1	34	SHOE-clutch	55076-3	6
6	CAP-oil filler (Note 1) Includes: 7 GASKET VALVE-vent (not shown)	A-63717-A	1	35	SPIDER CLUTCH	58546-1	1
7	GASKET	56607	1	36	WASHER-thrust (inner)	58833-1	1
8	KIT-spiked bumper Includes: 9 SCREW-flat hd., 1/4-20 x 3/4 10 WASHER-lock, 1/4 11 NUT-hex hd., 1/4-20	A-58543	1	37	RACE-inner	55661	1
9	SCREW-flat hd., 1/4-20 x 3/4	80053	2	38	SPROCKET & DRUM (Note 3) Open type 3/8" pitch, 7 tooth (std) (Note 4) 3/8" pitch, 8 tooth .404 pitch, 7 tooth 1/2" pitch, 6 tooth 7/16" pitch, 7 tooth	A-67545 † A-54923 † A-57344 † A-56019 † A-56377	1 1 1 1 1
10	WASHER-lock, 1/4	83009	2	39	BEARING-needle	55664	1
11	NUT-hex hd., 1/4-20	81053	2	40	DRUM & HUB-splined type	† OM-10616	1
12	DRIVECASE Includes: 13 BOLT-guide bar TUBE-oil line (not shown) 14 SCREW-plug 15 BALL-check 16 SPRING-check valve 17 SEAT-valve (Note 2) Includes: "O" RING (not shown)	A-59493-C	1	41	BEARING-needle Rim type 3/8" pitch, 7 tooth .404 pitch, 7 tooth 7/16" pitch, 7 tooth 1/2" pitch, 7 tooth	55664 † OM-68210 † OM-10513 † OM-10514 † OM-10512	1 1 1 1 1
13	BOLT-guide bar	58334	2	42	WASHER-thrust (outer) (Note 4)	58926	1
14	TUBE-oil line (not shown)	59023	1	43	WASHER-flat, 3/8	84010-1	1
15	SCREW-plug	59621	1	44	NUT-hex, 3/8-24	81192	1
16	BALL-check	25527	2	45	PLATE-guide bar (outer)	56872-B	1
17	SEAT-valve (Note 2) Includes: "O" RING (not shown)	A-67959	1	46	COVER-drivecase Includes: 47 NUT -5/16-18 48 PIN-adjusting 49 SCREW-pin, 5/16-18 x 2-1/8 51 NUT-hex-3/8-16	A-58378-1 81123 55613-1 82219 81089-2	1 1 1 1 2
18	GASKET	67123	1				
19	CAP-check valve (Note 2)	67958	1				
20	BEARING-needle	63043	1				
21	SEAL	56256-A	1				
22	SCREW-hex hd., 12-24 x 3/4	80867	5				
23	CONNECTOR-oil pump	58337-A	1				
24	PLUNGER-oil pump Includes: 25 "O" RING-shaft 26 "O" RING-plunger 27 SPRING-plunger	A-57834-10	1				
25	"O" RING-shaft	59074	1				
26	"O" RING-plunger	74388	1				
27	SPRING-plunger	59293	1				
28	HANDLE BAR-flush cut HANDLE BAR-wrap around	A-65846-2 † A-58398	1 1				
29	WASHER-lock, 5/16	83003	3				

Note 1 - Bow Guide requires A-56580-1 Cap

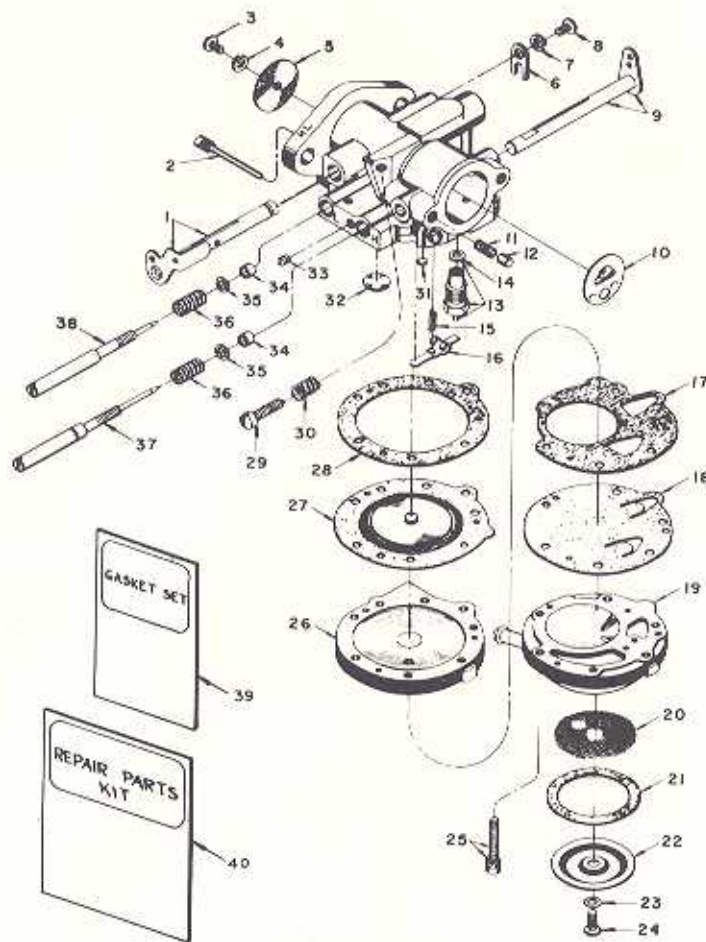
Note 2 - Units below S/N 3283150 - use A-67237 Valve Seat and 67150 Cap.

Note 3 - Check type and number of teeth on sprocket before ordering.

Note 4 - 8 tooth Sprockets must be used with 55163-1 Washer (outer).

† Optional

# C-72 CHAIN SAW



## A-59427-A (HL-141D)

No.	Description	Part No.	Qty.	No.	Description	Part No.	Qty.
1	THROTTLE SHAFT & LEVER	A-58531	1	22	COVER-strainer	58526	1
2	PIN-fulcrum	‡ A-55762	1	23	GASKET-cover screw	28098	1
3	SCREW-rd. hd., 4-40 x 1/4	‡ 80591	1	24	SCREW-cover retaining	‡ 58525	1
4	WASHER-lock, #4	‡ 83008	1	25	SCREW-fil hd. w/lockwasher, 6-32 x 13/16	55316	6
5	SHUTTER-throttle	75532	1	26	COVER-diaphragm	A-58533	1
6	CLIP-throttle shaft	73086	1	27	DIAPHRAGM-main	‡ 57829	1
7	WASHER-lock, #8	83000	1	28	GASKET-diaphragm cover	57824	1
8	SCREW-flat hd., 8-32 x 5/16	73088	1	29	SCREW-idle stop (Note 1)	‡ 71509	1
9	CHOKE SHAFT & LEVER	A-58532	1	30	SPRING-idle stop (Note 1)	‡ 28064	1
10	SHUTTER-choke	77427	1	31	PLUG-cup	‡ 55763	1
11	SPRING-choke friction	73264	1	32	PLUG-Welch	‡ 30818	1
12	PIN-choke friction	71494	1	33	SCREW PLUG-drain	73067	1
13	INLET NEEDLE & SEAT	A-58524	1	34	PACKING-adjusting needle	75733	2
14	Includes: GASKET	55344	1	35	WASHER-adjusting needle	75735	2
15	SPRING-tension	‡ 55759	1	36	SPRING-adjusting needle	‡ 73075	2
16	LEVER-inlet control	‡ 55747	1	37	NEEDLE-main adjusting	58536	1
17	GASKET-fuel pump	58529	1	38	NEEDLE-idle adjusting	58680	1
18	DIAPHRAGM-fuel pump	‡ 57729	1	39	GASKET SET	‡ 68657	1
19	BODY-fuel pump	59265	1	40	REPAIR PARTS KIT	68662	1
20	SCREEN-strainer	‡ 58527	1				
21	GASKET-strainer	55751	1				

‡ Included in Repair Parts Kit #40

Note 1 - Idle Stop Screw #29 and Spring #30 must be removed when an external idle adjustment is used.

# C-72 CHAIN SAW

## Tools

23136-2	BODY-assembling fixture
22820-2	COLLAR-bearing installation
A-23672	JACKSCREW-assembly
23670	PLATE-crankshaft aligning
22828	PLIERS-retaining ring (piston)
23876	PLUG-bearing installation (drivecase)
23139	PLUG-bearing installation (clutch drum)
23678	PLUG-bearing installation (starter)
A-23679	PLUG-bearing removal (starter)
A-23809	PLUG-needle bearing installation
A-23951	PLUG-piston pin removal
23233-1	PLUG-seal installation (crankcase)
23671	PLUG-seal installation (drivecase)
A-22560	PULLER-magneto rotor
23693	SLEEVE-seal protecting
A-22808	WRENCH-combination
23528	WRENCH-hex or socket screw (connecting rod)
A-23696-A	WRENCH-spanner

## Accessories

A-67511	KIT-drivecase cover (extended)
57084-1	ROPE-starter (250 ft. reel)
65711	SHIELD-rewind spring (inner)
65712	SHIELD-rewind spring (outer)

## Paint

23475	SPRAY CAN-red
-------	---------------

## Decal

No. 23742 composed of "DIRECT DRIVE", "STARTING INSTRUCTIONS" and two "HOMELITE" (letters 1/2" and 1/4" high).

Part No.	Description	Qty.	Part No.	Description	Qty.	Part No.	Description	Qty.
OM-10512	Drum & Hub	1	58190-S	Bearing-ball	1	63356	Gasket-crankcase	1
OM-10513	Drum & Hub	1	58292	Gasket-cylinder	1	A-63665	Handle-throttle	1
OM-10514	Drum & Hub	1	58303-A	Seal	1	A-63717-A	Cap-oil filler	1
OM-10616	Drum & Hub	1	A-58317-B1	Crankcase	1	63718	Valve-vent	2
19238-3	Screw-bearing retainer	2	58319-A	Ring-retaining	2	63728	Filter Element-air	1
A-22560	Puller-magneto rotor	1	A-58321	Lead-ground	1	64049-A	Lock-rewind spring	1
A-22808	Wrench-combination	1	58334	Bolt-guide bar	2	64050-1	Pulley-starter	1
22820-2	Collar-bearing	1	58337-A	Connector-oil pump	1	64052	Shield-sawdust	1
22829	Fliter-retaining ring	1	58340-B	Line-oil pickup	1	64053-A	Rotor	1
23136-2	Body-assembling	1	A-58341-A	Reservoir-oil	1	64054	Stud-starter pawl	2
23139	Plug-clutch drum	1	58343	Gasket-spacer	2	64055	Screen-rotary	1
23233-1	Plug-crankcase	1	58344	Gasket-elbow	1	A-64140-1	Cap-fuel tank	1
23475	Spray Can-red	1	58348	Boot-throttle rod	1	64144	Decal-caution	1
23528	Wrench-screw	1	58352-A	Spring-throttle	1	*A-64178-3A	Starter-rewind	1
23670	Plate-crankshaft	1	58353	Shaf-trigger	1	64180-A	Spring-rewind	1
23671	Plug-drivecase	1	A-58354	Rod-choke	1	*64443-1	Bushing-starter post	1
A-23672	Jackscrow	1	58356-B	Rod-oil pump	1	64637	Plug-button	1
23678	Plug-starter	1	58357	Button-oil rod	1	64742	Ring-retaining	1
A-23679	Plug-starter	1	58361	Stud-cover	1	A-64744	Plug-button	1
23693	Sleeve-seal protecting	1	58362	Grommet	3	65358	Gasket	1
A-23696-A	Wrench-spanner	1	58364	Fitting-fuel outlet	1	A-65615	Rollers-set of 27	1
23742	Decal	1	58367	Gasket-fuel tank cover	1	65711	Shield-inner	1
A-23809	Plug-bearing	1	A-58378-1	Cover-drivecase	1	65712	Shield-outer	1
23876	Plug-bearing	1	58382	Lead-high tension	1	65830	Bushing-starter cup	1
A-23951	Plug-piston pin	1	58391	Spacer-carburetor	1	A-65848-2	Handle Bar-flush cut	1
25033	Gasket	1	58392	Gasket-stud	1	67122	Gasket-reservoir	1
25527	Ball-check	2	A-58398	Handle Bar	1	67123	Gasket	1
27464	Stud-carburetor	2	58404	Pin-throttle latch	1	67139	Cup-starter	1
28064	Spring-idle stop	1	58405	Spring-throttle latch	1	67177	Bushing-starter cover	1
28095	Gasket-cover screw	1	58406	"O" Ring	1	A-67511	Kit-drivecase cover	1
30813	Plug-Welch	1	58409	Ring-retaining	1	A-67545	Sprocket & Drum	1
40199-S	Spark Plug	1	A-58419	Body-muffler	1	67953	Cap-check valve	1
55033	Piston Ring	2	58423-A	Baffle-muffler	1	A-67959	Seat-valve	1
55076-3	Shoe-clutch	6	58423-A	Cap-muffler	1	68046	Grommet	1
55095	Ring-retaining	1	58517	Insert-rope retaining	1	68119	Label-chain	1
55123-C	Spring-clutch	2	A-58524	Inlet Needle & Seat	1	OM-68210	Drum & Hub	1
55290	Sleeve	1	58525	Screw-cover retaining	1	68657	Gasket Set	1
55316	Screw	6	58526	Cover-strainer	1	68662	Repair Parts Kit	1
55344	Gasket	1	58527	Screen-strainer	1	71494	Pin-choke friction	1
A-55373-A	Terminal-spark plug	1	58529	Gasket-fuel pump	1	71509	Screw-idle stop	1
55533-3	Gasket-carburetor	1	A-58531	Throttle Shaft & Lever	1	72084-A1	Nut	1
55613-1	Pin-adjusting	1	A-58532	Choke Shaft & Lever	1	72085-A	Plate-"On-Off"	1
55661	Race-inner	1	A-58533	Cover-diaphragm	1	73067	Screw Plug-drain	1
55664	Bearing-needle	2	58538	Needle-main adj.	1	73075	Spring-adj. needle	2
55680	Line-fuel	1	58639	Deflector-air	1	73086	Clip-throttle shaft	1
55747	Lever-inlet control	1	A-58543	Kit-spiked bumper	1	73088	Screw-8-32 x 5/16	1
55751	Gasket-strainer	1	58546-1	Spicer Clutch	1	73264	Spring-choke friction	1
55759	Spring-tension	1	A-58653-B	Piston & Pin	1	74398	"O" Ring-plunger	1
A-55762	Pin-fulcrum	1	58680	Needle-idle adjusting	1	75078	Key-woodruff	1
55763	Plug-cup	1	58756	Pawl-starter	2	75532	Shutter-throttle	1
55805	Line-fuel	1	58758-1	Spring-starter pawl	2	75733	Packing-adj. needle	2
55871	Stud	4	58763	Washer-retaining	1	75735	Washer-adj. needle	2
55937	Grip-rope	1	58806	Rope-starter	1	77427	Shutter-choke	1
55978-2	Gasket-bkr. box cover	1	A-58828	Filter-oil	1	FASTENING PARTS		
55979	Cover-breaker box	1	58933-1	Washer-inner	1	80053	1/4-20 x 3/4	2
55980	Clip-cover	1	58937-2	Deflector-carb. air	1	80087	5/16-18 x 1-1/2	3
55982	Nut-terminal	1	58951	Washer	2	80513	6 x 1/2	15
55983	Washer-terminal	1	A-58923	Sprocket & Drum	1	80591	4-40 x 1/4	1
55984	Wiper-cam	1	58926	Washer-outer	1	80595	10-24 x 1/2	1
55986-A	Coil-ignition	1	58929	Bushing-rod	2	80625	10-32 x 1/2	2
55987	Condenser-w/terminal	1	58930	Stop-rod	1	80643	10-32 x 1/2	1
56014	Clamp-lead	1	58933	Fillerblock	1	80660	10-24 x 7/8	2
X-56019	Sprocket & Drum	1	58922	Spring-check valve	2	80685	Screw	2
56101-A	Cover-clutch	1	58923	Tube-oil line	1	80837	12-24 x 3/8	2
56256-A	Seal	1	58964	Bushing-latch pin	1	80884	12-24 x 1	1
56292-A	Seal-breaker box	1	58974	"O" Ring-shaft	1	80887	12-24 x 3/4	19
A-56377	Sprocket & Drum	1	59091-1	Housing-fan	1	80888	12-24 x 1-1/2	4
56607	Gasket	1	A-59229	Nut-cover	1	80869-1	10-24 x 3/8	5
56871-A	Plate-guide bar (inner)	1	59230-1	Cover-air filler	1	81013-1	Nut-1/4-20	2
56872-B	Plate-guide bar (outer)	1	A-59251	Filter-fuel	1	81033	Nut-1/4-20	2
57084-1	Rope-starter (250 ft. reel)	1	59253-1	Filter-felt	1	81065-2	Nut-1/4-28	4
57239-1	Button-choke rod	1	59265	Body-fuel pump	1	81089-2	Nut-3/8-16	2
A-57344	Sprocket & Drum	1	59270-2	Crankshaft	1	81104	Nut-7/16-20	1
A-57650-3	Switch-toggle	1	59279	Exchanger-heat	1	81123	Nut-5/16-18	1
57729	Diaphragm-fuel pump	1	59293	Spring-plunger	1	81192	Nut-hex, 3/8-24	1
57733	Tab-ground	1	59337	Stud-muffler	2	82156	9/32 x 3/4	5
57744	Box-breaker w/core	1	59338-A	Rod-throttle	1	82219	5/16-18 x 3-1/8	1
57749	Screw-breaker points	1	59351	Bearing-needle	1	83000	Washer-#8	1
57750	Screw-condenser	1	A-59427-A	Carburetor	1	83003	Washer-lock, 5/16	3
57824	Gasket-diaphragm cover	1	A-59433-1	Rod-connecting	1	83008	Washer-lock, #4	1
57828	Diaphragm-main	1	A-59490	Elbow-reed	1	83009	Washer-lock, 1/4	8
A-57834-10	Plunger-oil pump	1	A-59493-C	Drivecase	1	83046	Washer-lock, #10	3
A-58185	Points-breaker	1	59621	Screw-plug	1	83061	Washer-lock	2
58172-4	Tank-fuel	1	A-59652	Muffler	1	84010-1	Washer-flat, 3/8	1
58173-1	Cover-fuel tank	1	59765	"O" Ring	1	84047	Washer-flat, 7/16	1
58174-2	Cylinder-2" bore	1	A-59919-1	Shield-cylinder	1	86301	Cotter Pin	2
58181-A	Trigger-throttle	1	63043	Bearing-needle	1	86324	Cotter Pin	1
58185-A1	Brace-throttle handle	1	63290	Washer-felt	1	*Denotes new parts		

ZOLLER E1179YX

# HOMELITE TEXTRON

Homelite Division of Textron Inc.