

# HOMELITE CHAIN SAW MODEL 4-20

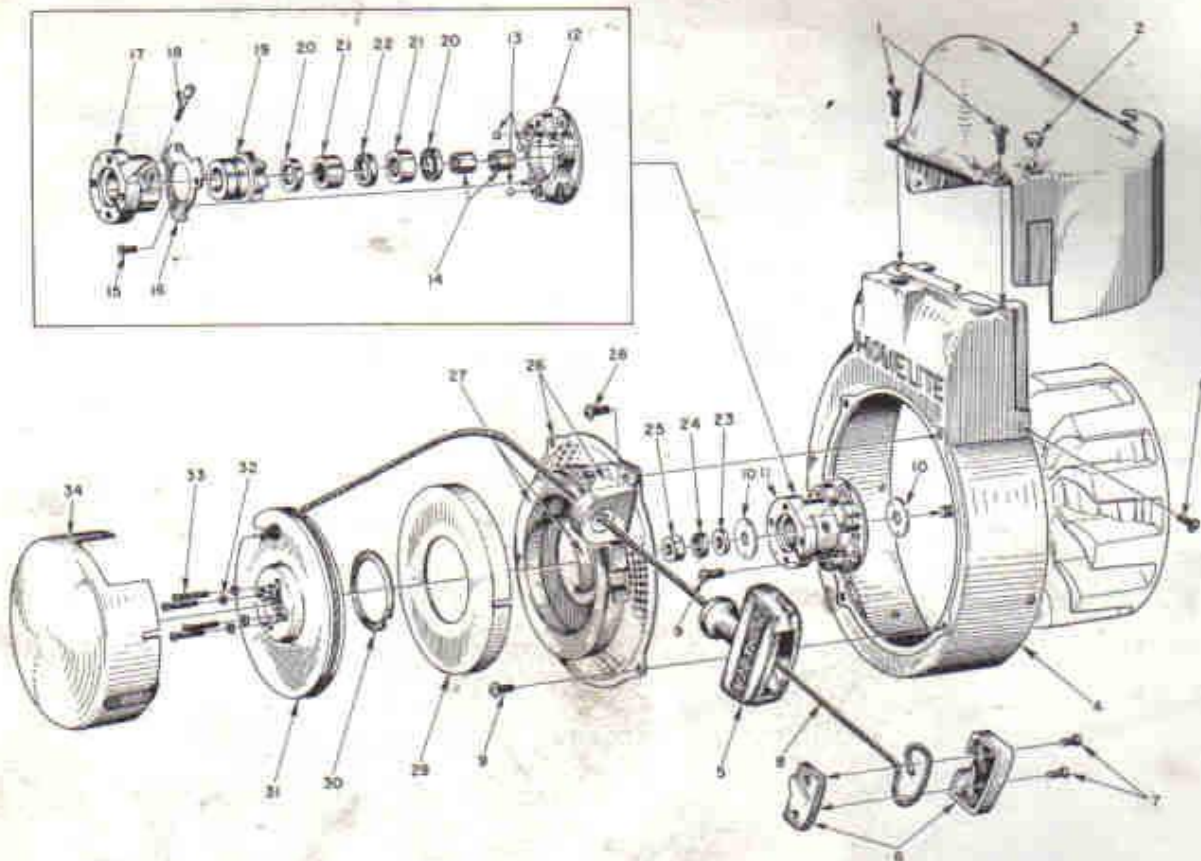


FIGURE 1 — RECOIL STARTER PARTS

SEPT. 1958

| Index No. | Part No. | Description                     | No. Required | Index No. | Part No.   | Description                                     | No. Required |
|-----------|----------|---------------------------------|--------------|-----------|------------|---|--------------|
| 1         | 80577    | SCREW—8-32 x 1/8 pan hd.        | 7            | 19        | A-55348    | RATCHET—w/washer<br>Includes                    | 1            |
| 2         | 32814    | PLUG                            | 1            |           | 55271      | WASHER—formica<br>Includes                      | 1            |
| 3         | 55015-B  | SHIELD—cylinder                 | 1            | 20        | 55272      | SEAL—garlock                                    | 2            |
| 4         | AA-55208 | SHROUD—alr, w/inserts           | 1            | 21        | 55215      | BEARING—needle                                  | 2            |
| 5         | 55932    | GRIP—starting                   | 1            | 22        | 55214      | FELT  | 1            |
| 6         | A-56081  | INSERT—grip w/cover<br>Includes | 1            | 23        | 84067      | WASHER—5/16 flat aluminum                       | 1            |
| 7         | 80619    | SCREW                           | 2            | 24        | 83002      | WASHER—5/16 lock                                | 1            |
| 8         | 55896    | ROPE—nylon                      | 1            | 25        | 81117      | NUT—5/16-24 hex jam                             | 1            |
| 9         | 80579    | SCREW—10-32 x 1/8 pan hd.       | 6            | 26        | A-55580    | SCREEN—alr<br>Includes                          | 1            |
| 10        | 55276    | WASHER—thrust                   | 2            |           | AA-55222-A | BRACKET w/55363-A bushing                       | 1            |
| 11        | A-56491  | BALL DRIVE<br>Includes          | 1            | 27        | 56497      | SPRING—recoil                                   | 1            |
| 12        | 55054-A  | PLATE—ball drive                | 1            | 28        | 80576      | SCREW—10-32 x 9/16 pan hd. (through<br>bracket) | 1            |
| 13        | 55217    | BALL—steel                      | 3            | 29        | 71603      | COVER—spring housing                            | 1            |
| 14        | 55218    | SLEEVE                          | 2            | 30        | 71588      | SHIM—plastic                                    | as req'd.    |
| 15        | 80588    | SCREW—5-40 x 5/16 flat hd.      | 3            | 31        | 55362-1    | PULLEY  | 1            |
| 16        | 55077    | RETAINER—ball                   | 1            | 32        | 83004      | WASHER—#6 lock                                  | 4            |
| 17        | A-56518  | HUB & SCREW<br>Includes         | 1            | 33        | 80475      | SCREW—6-32 x 3/8 fl. hd.                        | 4            |
| 18        | 72295-A  | SCREW—hub                       | 1            | 34        | AA-73234-1 | COVER—pulley                                    | 1            |
|           | AA-55213 | RATCHET & BEARING               | 1            |           | 56187      | DECAL—4-20 (for pulley cover)                   | 1            |

# HOMELITE CHAIN SAW MODEL 4-20

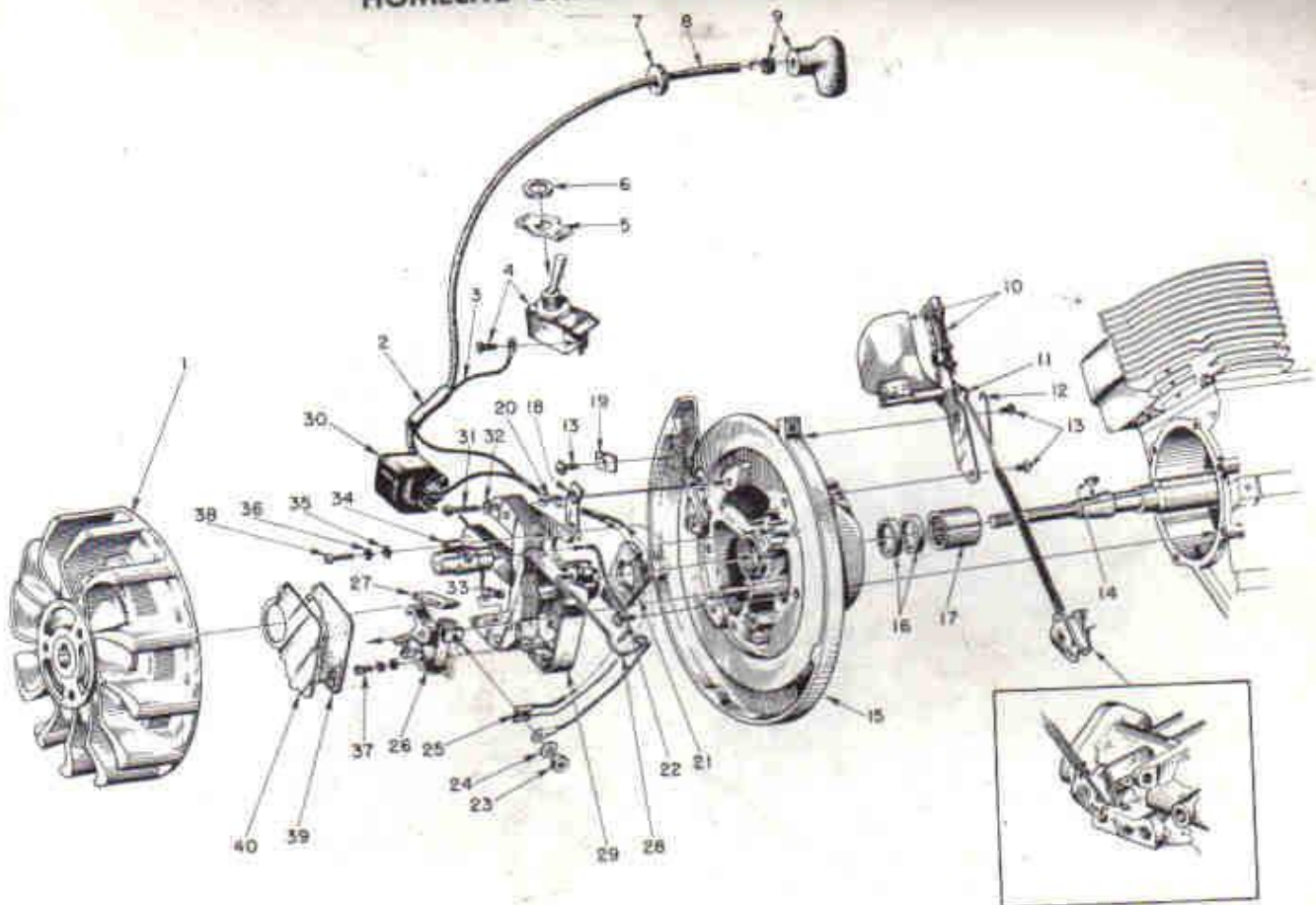


FIGURE 2—PHELON IGNITION AND GOVERNOR PARTS

SEPT. 1958

| Index No. | Part No.   | Description              | No. Required | Index No. | Part No. | Description               | No. Required |
|-----------|------------|--------------------------|--------------|-----------|----------|---------------------------|--------------|
| 1         | 56714      | ROTOR                    | 1            | 19        | 55161    | CLAMP—outer               | 1            |
| 2         | 55290      | SLEEVE—insulating        | 1            | 20        | 80598    | SCREW—6-32 x 1/4 flat hd. | 2            |
| 3         | 55990      | LEAD—ground              | 1            | 21        | 55989    | WASHER—sealing, felt      | 1            |
| 4         | AA-72094-A | SWITCH w/screw           | 1            | 22        | 80576    | SCREW—10-32 x 1/4 pan hd. | 6            |
|           |            | Includes                 |              | 23        | 55982    | NUT—terminal              | 1            |
| 5         | 55879      | PLATE (on-off)           | 1            | 24        | 55983    | WASHER—terminal           | 1            |
| 6         | 72084-A1   | NUT                      | 1            | 25        | -        | TERMINAL—jam-tite         | 1            |
| 7         | 60929      | GROMMET                  | 1            | 26        | A-55971  | POINTS—(set)              | 1            |
| 8         | 55235-A    | LEAD—high tension        | 1            | 27        | 55984    | WICK—felt                 | 1            |
| 9         | A-55373    | TERMINAL (spark)         | 1            | 28        | 55980    | CLAMP—dust cover          | 1            |
| 10        | A-55996    | GOVERNOR                 | 1            | 29        | 55960    | BOX—breaker w/core        | 1            |
|           |            | Includes                 |              | 30        | 55986    | COIL                      | 1            |
|           | 84066      | WASHER—governor arm butt | 1            | 31        | 80660    | SCREW—10-24 x 1/2 fl. hd. | 2            |
| 11        | 55158      | ARM—governor             | 1            | 32        | 83046    | WASHER—#10 lock           | 3            |
| 12        | 56179      | SPRING                   | 1            | 33        | 55977    | SCREW                     | 1            |
| 13        | 80575      | SCREW—8-32 x 1/4 pan hd. | 3            | 34        | 55987    | CONDENSER w/terminal      | 1            |
| 14        | 75078      | KEY—rotor                | 1            | 35        | 84048    | WASHER—flat               | 2            |
| 15        | A-56079    | BACKPLATE w/pivot post   | 1            | 36        | 83060    | WASHER—lock               | 2            |
|           |            | Includes                 |              | 37        | 55985    | SCREW—8-32 x 1/2 fl. hd.  | 1            |
| 16        | 71597      | SEAL—garlock             | 2            | 38        | 55988    | SCREW                     | 1            |
| 17        | 55204      | BEARING—needle           | 1            | 39        | 55978-1  | GASKET—dust cover         | 1            |
| 18        | 55962      | CLAMP—inner              | 1            | 40        | 55979    | COVER—dust                | 1            |
|           | **         | TAPE—insulation          | 1            |           | 80595    | SCREW—10-24 x 1/2 fl. hd. | 1            |

\*Not available separately; replacement coils and condensers supplied with separate terminals.

\*\*Not available separately.

Always furnish saw model and serial number when ordering parts.

# HOMELITE CHAIN SAW MODEL 4-20

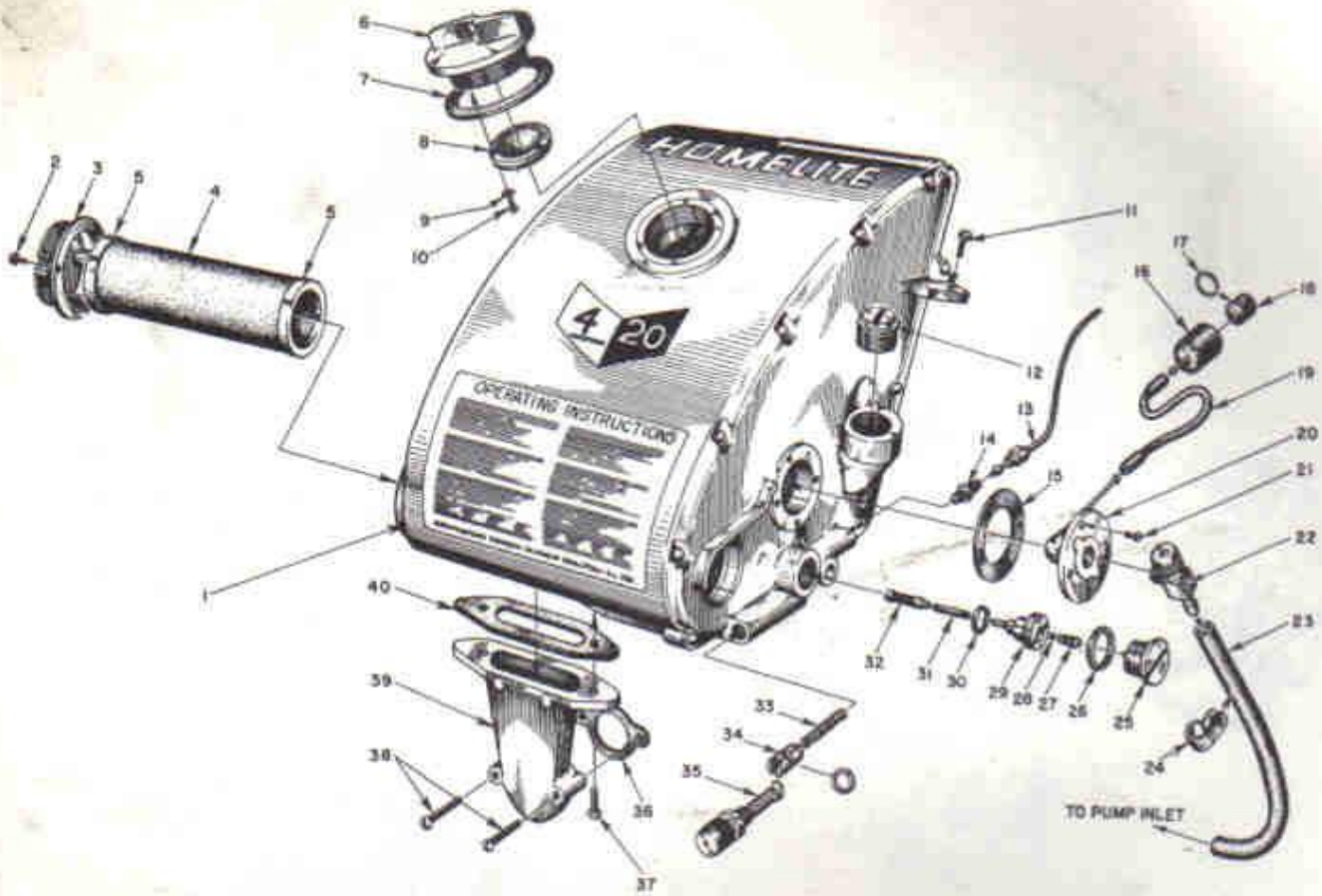


FIGURE 3 — FUEL TANK

SEPT. 1958

| Index No. | Part No.  | Description                 | No. Required | Index No. | Part No.   | Description                            | No. Required |
|-----------|-----------|-----------------------------|--------------|-----------|------------|--|--------------|
|           | 56033     | FOILCAL—Homelite            | 1            | 16        | A-74375    | BODY—fuel strainer                     | 1            |
|           | 56189     | FOILCAL—4-20                | 1            |           |            | Includes                               |              |
|           | 55968     | FOILCAL—instructions        | 1            | 17        | 74380      | RING—snap                              | 1            |
| 1         | A-55709   | FUEL TANK                   | 1            | 18        | 74374      | FILTER—felt                            | 1            |
|           |           | Includes                    |              | 19        | 72107-A    | SLEEVE—flexible                        | 1            |
| 2         | 80571     | SCREW—6-32 x 3/8 pan hd.    | 2            | 20        | AA-72475   | FITTING—fuel outlet                    | 1            |
| 3         | 53066-A   | CAP—air filter              | 1            | 21        | 80451      | SCREW—6-32 x 3/8 flat hd.              | 4            |
| 4         | A-55531   | FILTER—air                  | 1            | 22        | 55738      | VALVE—shut-off                         | 1            |
|           |           | Includes                    |              | 23        | A-55801    | LINE—fuel                              | 1            |
| 5         | 55530     | GASKET (cemented to filter) | 2            | 24        | 56014      | CLIP—fuel line, nylon                  | 1            |
|           | 55729-1   | DECAL—instructions          | 1            | 25        | AA-55162   | CAP—oil supply line                    | 1            |
|           | 55249     | DECAL—Homelite              | 1            | 26        | 53107      | GASKET                                 | 1            |
| 6         | A-55305   | CAP—fuel                    | 1            | 27        | 55288-A    | SPRING—check valve                     | 1            |
|           |           | Includes                    |              | 28        | 35527      | BALL—check                             | 1            |
| 7         | 72173     | GASKET                      | 1            | 29        | 55109-A    | SEAT—check ball                        | 1            |
| 8         | A-55301-B | VALVE—relief                | 1            | 30        | 55110      | GASKET                                 | 1            |
| 9         | 83083     | WASHER—23 lock              | 2            | 31        | 55133-A    | SLEEVE—flexible                        | 1            |
| 10        | 80592     | SCREW—3-48 x 1/2 rd. hd.    | 3            | 32        | AA-55259-A | PICK-UP—oil                            | 1            |
| 11        | 80582     | SCREW—8-32 x 1/4 pan hd.    | 1            | 33        | 71762      | SPRING—plunger                         | 1            |
| 12        | 55140-A   | CAP—oil filler              | 1            | 34        | A-74406    | TUBE—plunger (includes 74388 "O" ring) | 1            |
| 13        | AA-55191  | LINE—oil                    | 1            | 35        | 71764      | BUTTON—plunger                         | 1            |
| 14        | A-53824   | VALVE—check                 | 1            | 36        | 72971-1    | GASKET—air elbow                       | 1            |
| 15        | 72174     | GASKET                      | 1            | 37        | 80572      | SCREW—10-32 x 1/4 pan hd.              | 2            |
|           |           |                             |              | 38        | 80638      | SCREW—10-32 x 1 1/4 pan hd.            | 2            |
|           |           |                             |              | 39        | 55019-2    | ADAPTER—air filter                     | 1            |
|           |           |                             |              | 40        | 55059      | GASKET—adapter                         | 1            |

# HOMELITE CHAIN SAW MODEL 4-20

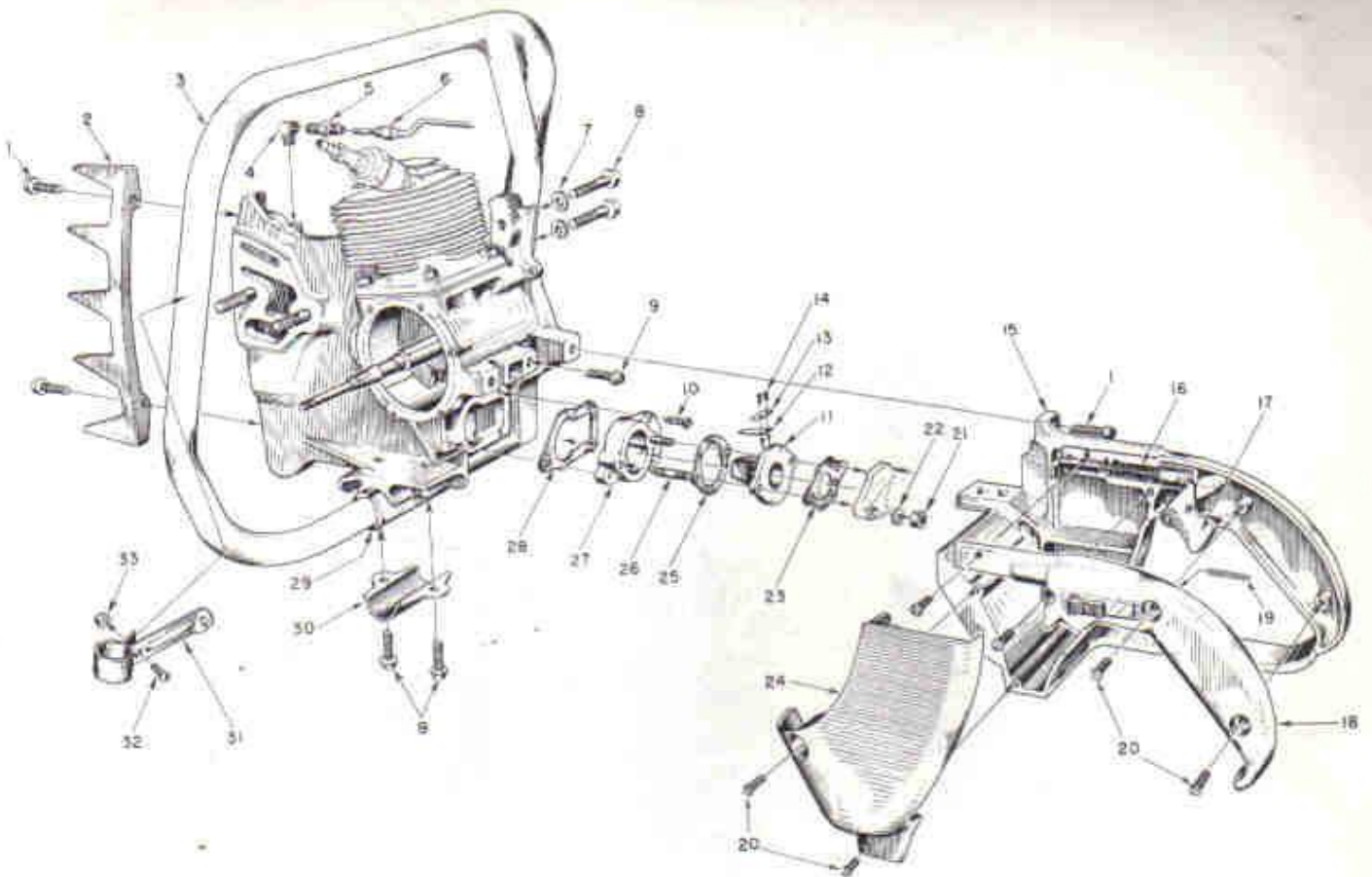


FIGURE 4 — HANDLE, GRIP AND REED VALVE PARTS

SEPT. 1958

| Index No. | Part No. | Description   | No. Required |
|-----------|----------|---|--------------|
| 1         | 80573    | SCREW— $\frac{1}{4}$ -20 x $1\frac{1}{8}$ x hex hd. | 5            |
| 2         | 55103    | PLATE—bumper  | 1            |
| 3         | A-55518  | HANDLE—wrap-around (4-20A)                          | 1            |
|           |          | Includes  |              |
|           | 80308    | SCREW— $\frac{3}{16}$ -18 x 1 Allen                 | 1            |
|           | AA-55119 | HANDLE—flush-cut (4-20)                             | 1            |
| 4         | 31734    | ELBOW—connector                                     | 1            |
| 5         | 31733-1  | ADAPTER—straight                                    | 1            |
| 6         | AA-55191 | LINE—chain oil                                      | 1            |
| 7         | 83003    | WASHER— $\frac{5}{16}$ lock                         | 2            |
| 8         | 80087    | SCREW— $\frac{3}{16}$ -18 x $1\frac{1}{2}$ hex hd.  | 2            |
| 9         | 80581    | SCREW— $\frac{1}{4}$ -20 x $\frac{1}{8}$ hex hd.    | 4            |
| 10        | 80583    | SCREW—10-32 x $\frac{3}{4}$ pan hd.                 | 3            |
| 11        | 55932    | ADAPTER—reed valve                                  | 1            |
| 12        | 55941    | REED  | 4            |
| 13        | 55942    | PLATE—reed  | 4            |
| 14        | 80658    | SCREW—4-40 x $\frac{3}{4}$ pan hd.                  | 8            |
| 15        | AA-55281 | GRIP—pistol w/pin and 55372 felt                    | 1            |
| 16        | A-55954  | ROD—throttle  | 1            |
|           |          | Includes  |              |
|           | 55045-A  | SPRING  | 1            |

| Index No. | Part No. | Description                        | No. Required |
|-----------|----------|------------------------------------|--------------|
| 17        | AA-55207 | TRIGGER—throttle                   | 1            |
| 18        | AA-55228 | COVER—pistol grip                  | 1            |
|           |          | Includes                           |              |
|           | AA-55282 | LOCK—throttle                      | 1            |
|           |          | Includes                           |              |
|           |          | SPRING—lock                        | 1            |
| 19        | 72970    | SCREW—8-32 x $\frac{1}{2}$ pan hd. | 7            |
| 20        | 80560    | NUT— $\frac{1}{4}$ -20 hex         | 2            |
| 21        | 81013    | WASHER— $\frac{1}{4}$ lock         | 2            |
| 22        | 83009    | GASKET—carburetor                  | 1            |
| 23        | 55553    | SHIELD—carburetor                  | 1            |
| 24        | 55104    | GASKET—spacer-adaptor              | 1            |
| 25        | 55946    | STUD                               | 2            |
| 26        | 55945    | SPACER—reed adaptor                | 1            |
| 27        | 55953    | GASKET                             | 1            |
| 28        | 55116    | CUSHION—handle                     | 1            |
| 29        | 55146    | CLAMP—handle                       | 1            |
| 30        | 55145    | BRACE—handle                       | 1            |
| 31        | A-55740  | Includes                           |              |
|           |          | SCREW—10-32 x $\frac{7}{8}$        | 1            |
| 32        | 80578    | NUT—10-32 lock                     | 1            |
| 33        | 81109    |                                    |              |

Always furnish saw model and serial number when ordering parts.

# HOMELITE CHAIN SAW MODEL 4-20

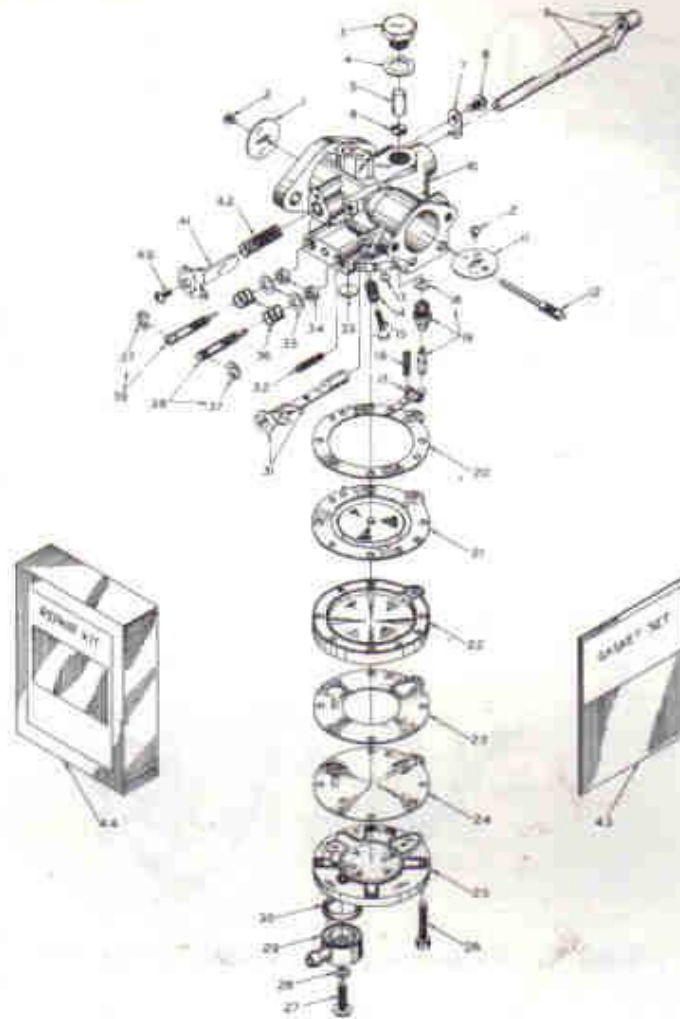


FIGURE 5 — BROWN CARBURETOR MODEL 1-CP

SEPT. 1958

| Index No. | Part No. | Description                               | No. Required | Index No. | Part No. | Description                          | No. Required |
|-----------|----------|---|--------------|-----------|----------|--------------------------------------|--------------|
|           | A-56505  | CARBURETOR MODEL 1-CP                     | 1            | 22        | 77301    | COVER — main diaphragm               | 1            |
|           |          | Includes                                  |              | 23        | *77305   | GASKET — pump body                   | 1            |
| 1         | 74980    | SHUTTER — throttle                        | 1            | 24        | *77304   | DIAPHRAGM — pump                     | 1            |
| 2         | 77044    | SCREW — shutter, 4-40 x 1/8 rd. hd.       | 2            | 25        | 77316    | BODY — fuel pump                     | 1            |
| 3         | †77306   | SCREW — plug                              | 1            | 26        | 77160    | SCREW — body, 6-32 x 3/8 fl. hd.     | 4            |
| 4         | *77307   | GASKET — plug screw                       | 1            | 27        | 77320    | SCREW — fuel connection              | 1            |
| 5         | †77308   | FILTER — felt                             | 1            | 28        | *74997   | GASKET — fibre                       | 1            |
| 6         | †77317   | SCREEN — filter                           | 1            | 29        | 77318    | TURRET — fuel inlet connection       | 1            |
| 7         | †74981   | CLIP — throttle shaft                     | 1            | 30        | *77319   | GASKET — inlet connection            | 1            |
| 8         | †77041   | SCREW — throttle clip, 6-32 x 1/8 pan hd. | 1            | 31        | A-77322  | SHAFT & LEVER — choke                | 1            |
| 9         | A-77323  | SHAFT — throttle                          | 1            | 32        | 77311    | SPRING — choke friction              | 1            |
| 10        | A-77321  | BODY — service                            | 1            | 33        | †74977   | PLUG — Welch (large)                 | 1            |
| 11        | 74991    | SHUTTER — choke                           | 1            | 34        | *77007   | RING — square                        | 2            |
| 12        | †77014   | PIN — fulcrum                             | 1            | 35        | †77006   | WASHER — adjustment packing          | 2            |
| 13        | †77309   | PLUG — Welch (main nozzle)                | 1            | 36        | †77005   | SPRING — adjustment compression      | 2            |
| 14        | 77010    | SPRING — idle speed screw                 | 1            | 37        | 77004    | CLIP — spring retaining              | 2            |
| 15        | 77040    | SCREW — idle speed, 6-32 x 3/8 rd. hd.    | 1            | 38        | †A-77328 | SCREW — main adjusting, w/77004 clip | 1            |
| 16        | †77013   | SPRING — diaphragm lever tension          | 1            | 39        | †A-77251 | SCREW — idle adjusting w/77004 clip  | 1            |
| 17        | †77016   | LEVER — diaphragm                         | 1            | 40        | †77042   | SCREW — idle stop                    | 1            |
| 18        | *77267   | GASKET — copper                           | 1            | 41        | 77247    | LEVER — throttle stop                | 1            |
| 19        | †A-77327 | NEEDLE & SEAT — inlet w/gasket            | 1            | 42        | †77313   | SPRING — throttle friction           | 1            |
| 20        | *77303   | GASKET — main diaphragm                   | 1            | 43        | †77336   | GASKET SET (GS-152)                  | 1            |
| 21        | *A-77323 | DIAPHRAGM — main                          | 1            | 44        | 77337    | Repair Parts Kit (RK-155)            | 1            |

\*Included in GS-152 Gasket Set

†Included in RK-155 Repair Kit

NOTE: For field replacement, the Brown 1-CP Carburetor (complete) can be used in all saws listing the Brown 5-CS Carburetor. Use this parts list for parts replacement on Model 1-CP only.

Always furnish saw model and serial number when ordering parts

# HOMELITE CHAIN SAW MODEL 4-20

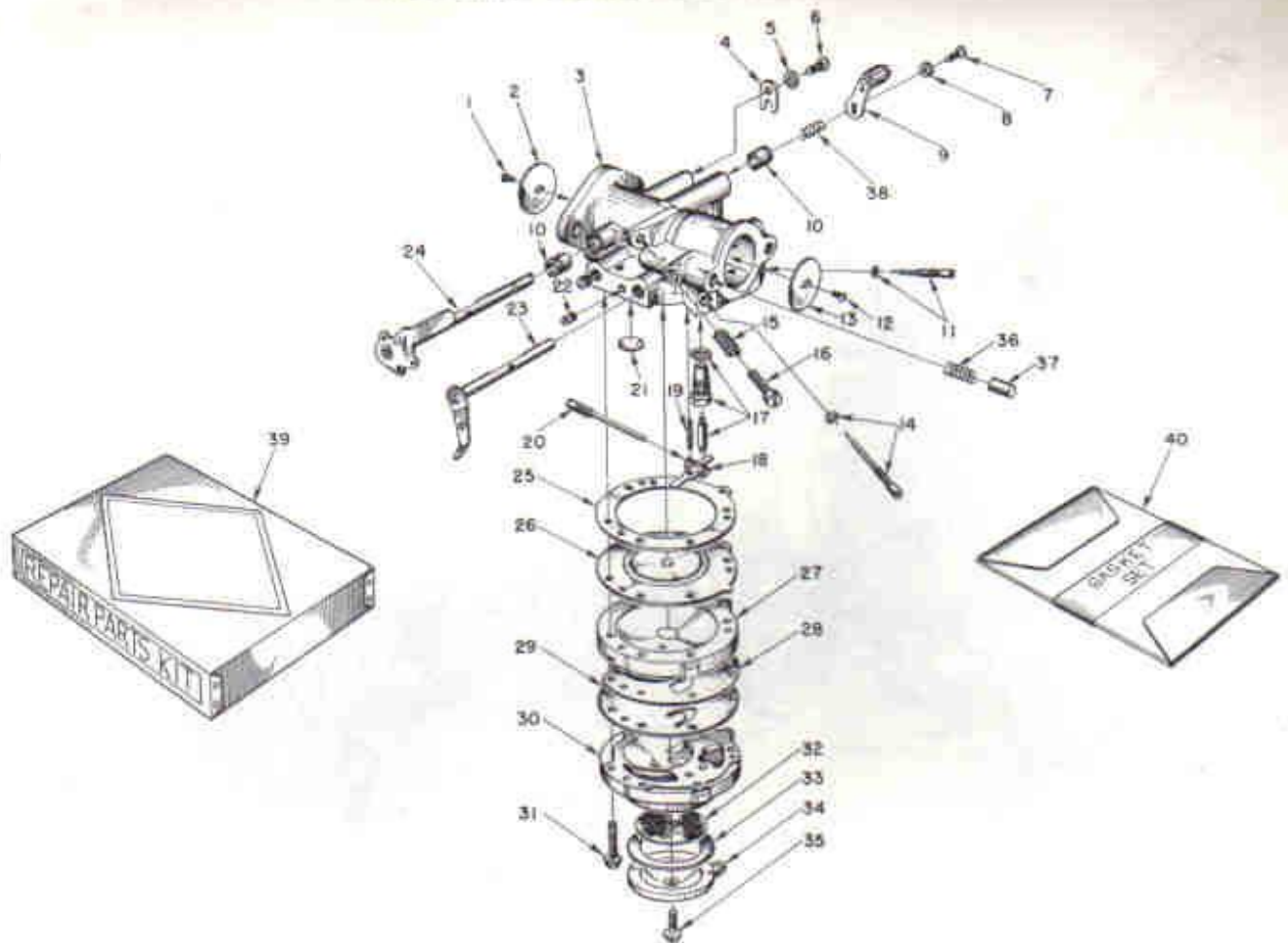


FIGURE 6—TILLOTSON CARBURETOR PARTS

SEPT. 1958

| Index No. | Part No. | Description                         | No. Required | Index No. | Part No. | Description                  | No. Required |
|-----------|----------|-------------------------------------|--------------|-----------|----------|------------------------------|--------------|
|           | A-56066  | CARBURETOR—Till. Model HL-27B       | 1            | 18        | *55747   | LEVER—inlet control          | 1            |
|           |          | Includes                            |              | 19        | *55759   | SPRING—control lever         | 1            |
| 1         | *80012   | SCREW—throttle shutter              | 1            | 20        | *A-55762 | SCREW—pinion                 | 1            |
| 2         | 73272    | SHUTTER—throttle                    | 1            | 21        | 30818    | PLUG                         | 1            |
| 3         | A-75533  | BODY—service                        | 1            | 22        | 73067    | PLUG—drain                   | 1            |
| 4         | 73086    | CLIP—throttle shaft                 | 1            |           | 71505    | PLUG                         | 2            |
| 5         | 83000    | WASHER—lock #8                      | 1            | 23        | A-55766  | LEVER—choke                  | 1            |
| 6         | 73088    | SCREW—8-32 x 5/8 flat hd.           | 1            | 24        | A-75624  | SHAFT—throttle, w/stop lever | 1            |
| 7         | *71521   | SCREW—4-36 x 1/4 rd. hd.            | 1            | 25        | 55754    | GASKET—main diaphragm        | 1            |
| 8         | *83008   | WASHER—lock #4                      | 1            | 26        | *A-55760 | DIAPHRAGM—main               | 1            |
| 9         | A-75528  | LEVER and ROLLER—throttle           | 1            | 27        | 55749    | COVER—main diaphragm         | 1            |
| 10        | 72812    | BUSHING—throttle shaft              | 2            | 28        | 55881    | GASKET—pump diaphragm        | 1            |
| 11        | *A-75527 | SCREW—main adjust. (hi speed)       | 1            | 29        | *55753   | DIAPHRAGM—pump               | 1            |
|           |          | Includes                            |              | 30        | 55748    | BODY—pump                    | 1            |
|           | 55764    | "O"—ring                            | 1            | 31        | *55316   | SCREW and WASHER             | 6            |
| 12        | *80012   | SCREW—choke shutter (come as No. 1) | 1            | 32        | 55752    | SCREEN—fuel strainer         | 1            |
| 13        | 73263    | SHUTTER—choke                       | 1            | 33        | 55751    | GASKET—pump cover            | 1            |
| 14        | *A-75530 | SCREW—idle adjust. (lo speed)       | 1            | 34        | 55750    | COVER—pump                   | 1            |
|           |          | Includes                            |              | 35        | 55756    | SCREW—retaining              | 1            |
|           | 55764    | "O"—ring                            | 1            | 36        | 73264    | SPRING—choke friction pin    | 1            |
| 15        | *28064   | SPRING—idle stop screw              | 1            | 37        | 71494    | PIN—choke friction           | 1            |
| 16        | *71509   | SCREW—idle stop (speed control)     | 1            | 38        | 56175    | SPRING                       | 1            |
| 17        | *A-55761 | INLET NEEDLE and SEAT               | 1            | 39        | 75623    | REPAIR PARTS KIT (RK-357)    | 1            |
|           |          | Includes                            |              | 40        | *55836   | GASKET SET (GS-122)          | 1            |
|           | 55344    | GASKET—inlet seat                   | 1            |           |          |                              |              |

\* Included in Repair Parts Kit (RK-357)

Always furnish saw model and serial number when ordering parts

# HOMELITE CHAIN SAW MODEL 4-20

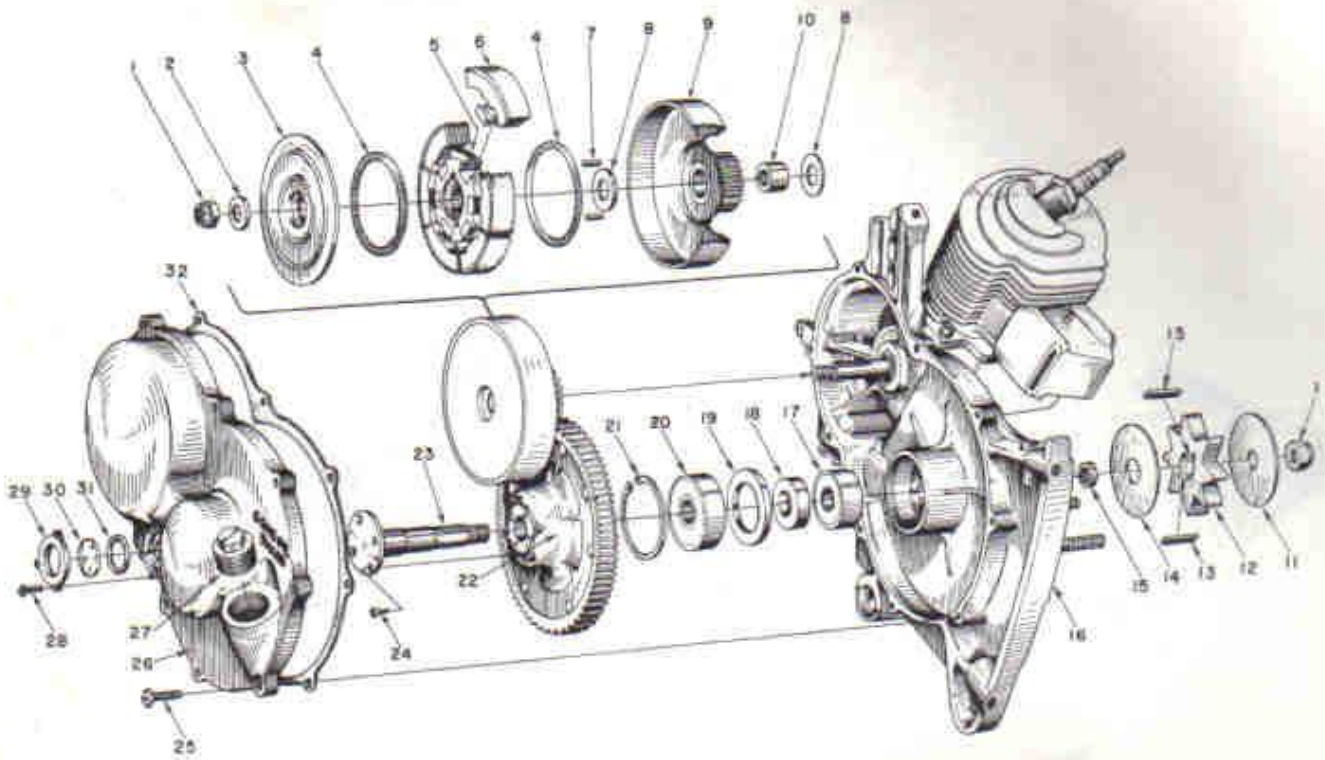


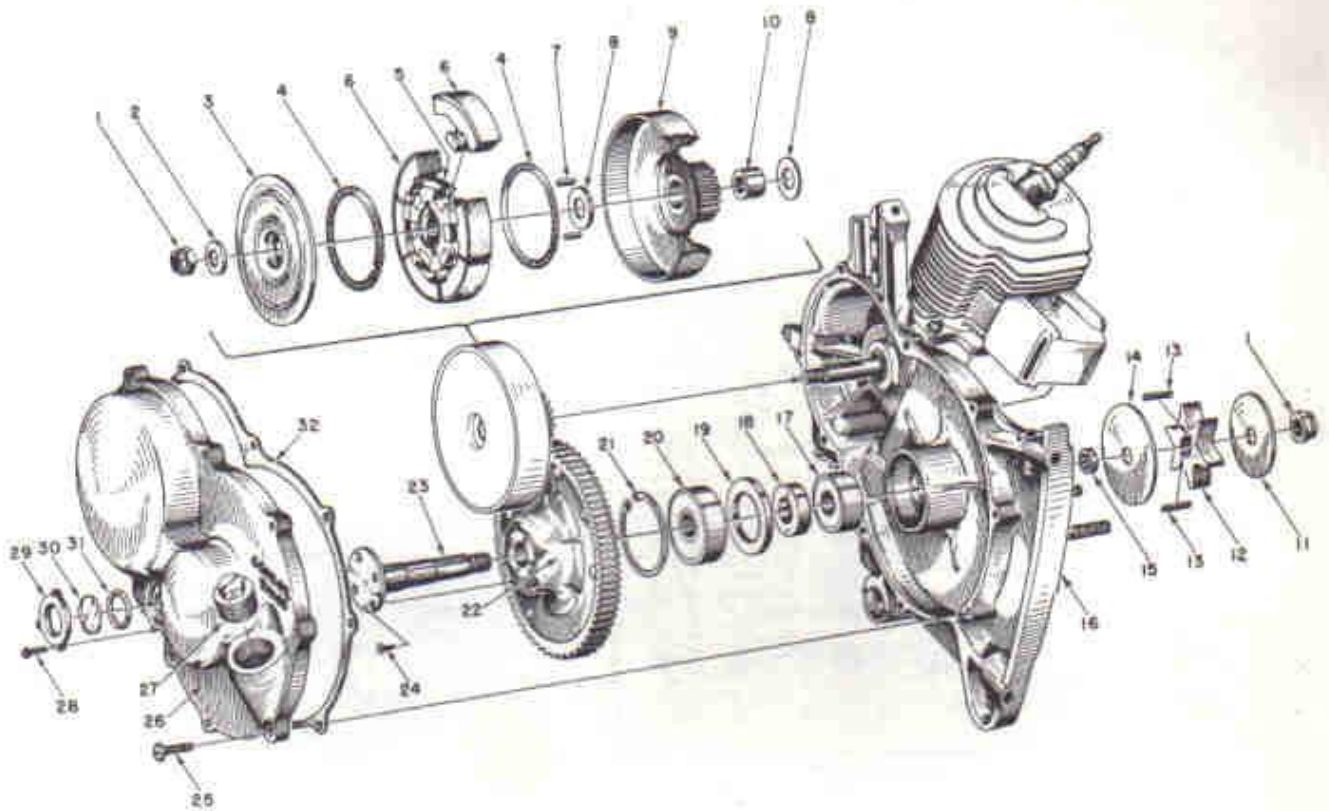
FIGURE 7 — GEAR CASE AND SPROCKET PARTS

SEPT. 1958

| Index No. | Part No. | Description                      | No. Required | Index No. | Part No.   | Description                                 | No. Required |
|-----------|----------|----------------------------------|--------------|-----------|------------|---|--------------|
| 1         | 81116    | NUT— $\frac{3}{8}$ -24 flex-lock | 2            | 17        | 55184      | BEARING—ball                                | 1            |
| 2         | 55036    | WASHER—clutch                    | 1            | 18        | 55024-A    | SPACER—bearing                              | 1            |
| 3         | 55126    | COVER—clutch                     | 1            | 19        | 55025      | SHOULDER—spacer                             | 1            |
|           | A-55693  | CLUTCH                           | 1            | 20        | 72040      | BEARING—ball                                | 1            |
|           |          | Includes                         |              | 21        | 28922      | RING—retaining                              | 1            |
| 4         | 55123-A  | SPRING                           | 2            | 22        | AA-55068-2 | DRIVEN GEAR                                 | 1            |
| 5         | 55075    | SPIDER                           | 1            | 23        | 53005-C    | SHAFT—sprocket                              | 1            |
| 6         | A-55692  | SHOE                             | 6            | 24        | 80651      | SCREW—12-28 x $\frac{3}{8}$ flt hd., socket | 4            |
| 7         | 55225    | KEY—clutch                       | 2            | 25        | 80572      | SCREW—10-32 x $\frac{5}{8}$ pan hd.         | 9            |
| 8         | 55034    | WASHER—thrust                    | 2            | 26        | AA-55226-A | COVER—gear case                             | 1            |
| 9         | AA-55086 | CLUTCH DRUM (and drive gear)     | 1            |           |            | Includes                                    |              |
| 10        | 55035    | BEARING—drive gear               | 1            | 27        | 55140-A    | PLUG—oil filler                             | 1            |
| 11        | 55602    | WASHER—sprocket (outer)          | 1            | 28        | 80571      | SCREW—6-32 x $\frac{3}{8}$ pan hd.          | 3            |
| 12        | 55593    | SPROCKET                         | 1            | 29        | 55098      | PLATE—window                                | 1            |
| 13        | 55482-1  | KEY—sprocket                     | 2            | 30        | 55099      | WINDOW—plastic                              | 1            |
| 14        | 55601    | WASHER—sprocket (inner)          | 1            | 31        | 55100      | GASKET—"O" ring                             | 1            |
| 15        | 55586    | SPACER—sprocket                  | 1            |           | 56188      | DECAL                                       | 1            |
| 16        | *        | CRANKCASE                        | 1            | 32        | 55053-A    | GASKET—gearcase cover                       | 1            |

\*A-55598—for breakdown see Figure 7—Engine Assembly.

# HOMELITE CHAIN SAW MODEL 4-20



**FIGURE 6A — GEAR CASE AND SPROCKET PARTS**  
 \*\*Use This Parts List For Six Tooth Sprocket Equipped Saws

AUGUST 1957

| Index No. | Part No.  | Description                     | No. Required | Index No. | Part No.   | Description                                | No. Required |
|-----------|-----------|---------------------------------|--------------|-----------|------------|--|--------------|
| 1         | 81116     | NUT— $\frac{1}{8}$ -24 hex-lock | 2            | 17        | 55184      | BEARING—ball                               | 1            |
| 2         | 55036     | WASHER—clutch                   | 1            | 18        | 55024-A    | SPACER—bearing                             | 1            |
| 3         | 55126     | COVER—clutch                    | 1            | 19        | 55025      | SHOULDER—spacer                            | 1            |
|           | A-55693   | CLUTCH                          | 1            | 20        | 72040      | BEARING—ball                               | 1            |
|           |           | Includes                        |              | 21        | 28922      | RING—retaining                             | 1            |
| 4         | 55123-A   | SPRING                          | 2            | 22        | AA-55068-2 | DRIVEN GEAR                                | 1            |
| 5         | 55075     | SPIDER                          | 1            | 23        | 55005-C    | SHAFT—sprocket                             | 1            |
| 6         | A-55692   | SHOE                            | 6            | 24        | 80651      | SCREW—12-28 x $\frac{1}{8}$ fl hd., socket | 4            |
| 7         | 55225     | KEY—clutch                      | 2            | 25        | 80573      | SCREW—10-32 x $\frac{1}{8}$ pan hd.        | 9            |
| 8         | 55034     | WASHER—thrust                   | 2            | 26        | AA-55226-A | COVER—gear case                            | 1            |
| 9         | AA-55086  | CLUTCH DRUM (and drive gear)    | 1            |           |            | Includes                                   |              |
| 10        | 55035     | BEARING—drive gear              | 1            | 27        | 55140-A    | PLUG—oil filler                            | 1            |
| 11        | 55163     | WASHER—sprocket (outer)         | 1            | 28        | 80571      | SCREW—6-32 x $\frac{1}{8}$ pan hd.         | 3            |
| 12        | **55101-A | SPROCKET—6-tooth                | 1            | 29        | 55098      | PLATE—window                               | 1            |
| 13        | 55482-1   | KEY—sprocket                    | 2            | 30        | 55099      | WINDOW—plastic                             | 1            |
| 14        | 55162     | WASHER—sprocket (inner)         | 1            | 31        | 55100      | GASKET—"O" ring                            | 1            |
| 15        | 55586-A   | SPACER—sprocket                 | 1            |           | 56188      | DECAL                                      | 1            |
| 16        | *         | CRANKCASE                       | 1            | 32        | 55053-A    | GASKET—gearcase cover                      | 1            |

\*A-55598—for breakdown see Figure 7—Engine Assembly.  
 \*\*Order Bar and Chain for 6-tooth sprocket from page 10A  
 (See Figure 8A.) Clearing and Bow Attachments must use  
 8-tooth sprocket shown in Figure 6.

Always furnish saw model and serial number when ordering parts.



# HOMELITE CHAIN SAW MODEL 4-20

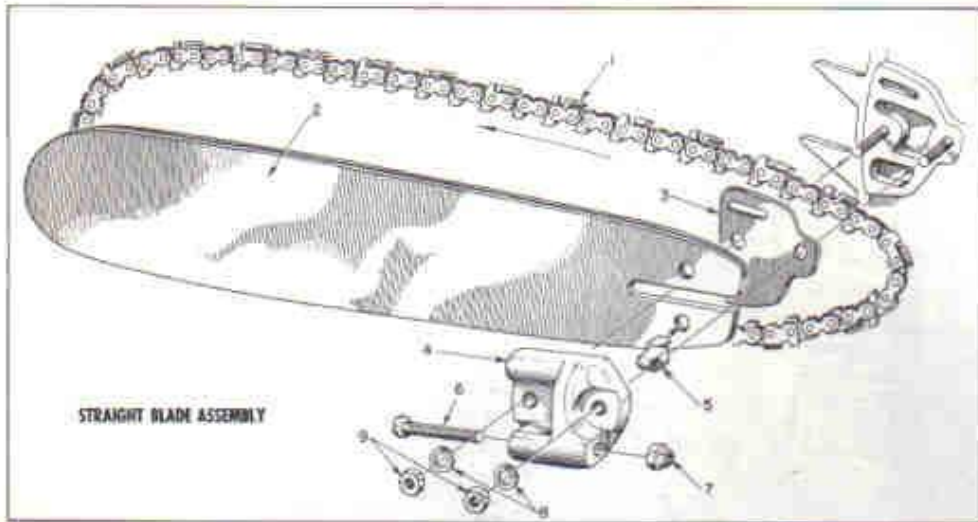


FIGURE 8A — BARS AND CHAINS FOR SIX TOOTH SPROCKET-EQUIPPED SAWS

(See Figure 8 for Bars fitting 8-tooth sprocket saws)

| Index No.                          | Part No.   | Description                 | No. Required |
|------------------------------------|------------|-----------------------------|--------------|
| <b>OREGON #10C 1/2 PITCH CHAIN</b> |            |                             |              |
| 1                                  | A-55338    | 14" CHAIN—(with kit)        | 1            |
|                                    | AA-73338   | 18" CHAIN—(with kit)        | 1            |
|                                    | A-55319    | 20" CHAIN—(with kit)        | 1            |
|                                    | *AA-73340  | 23" CHAIN—(with kit)        | 1            |
|                                    | **AA-73342 | 28" CHAIN—(with kit)        | 1            |
|                                    | AA-73344   | 33" CHAIN—(with kit)        | 1            |
|                                    | AA-73346   | 38" CHAIN—(with kit)        | 1            |
| 2                                  | A-55333    | 14" BAR—track hardened .063 | 1            |
|                                    | A-55255    | 18" BAR—track hardened .063 | 1            |
|                                    | AA-55331   | 20" BAR—track hardened .063 | 1            |
|                                    | A-55256    | 23" BAR—track hardened .063 | 1            |
|                                    | A-55257    | 28" BAR—track hardened .063 | 1            |
|                                    | 55329-1    | 18" BAR—extra hard tip .063 | 1            |
|                                    | 55327-1    | 23" BAR—extra hard tip .063 | 1            |
|                                    | 55330-1    | 28" BAR—extra hard tip .063 | 1            |
|                                    | 55335-1    | 33" BAR—extra hard tip .063 | 1            |
|                                    | 55336-1    | 38" BAR—extra hard tip .063 | 1            |

| Index No. | Part No. | Description                  | No. Required |
|-----------|----------|------------------------------|--------------|
| 3         | 55128    | SHIM                         | 1            |
|           | A-55591  | ADJUSTING PLATE              | 1            |
|           |          | Includes                     |              |
| 4         | 55551-8  | PLATE—adjusting              | 1            |
| 5         | 55552    | PIN—guide bar adjusting      | 1            |
| 6         | 80617    | SCREW—1/4-18 x 2 round hd.   | 1            |
| 7         | 81123    | NUT—hex lock                 | 1            |
| 8         | 83018    | WASHER—lock                  | 2            |
| 9         | 81089    | NUT—3/8-16 hex               | 2            |
| 10        | 55291-A  | OIL—gear (pint can SAE-90)   | 1            |
| 11        | 22808    | WRENCH—combination           | 2            |
|           | AA-73314 | REPAIR KIT—OREGON #10C CHAIN |              |
|           |          | Includes                     |              |
| 12        |          | RIVET                        | 4            |
| 13        |          | LINK—connecting (plain)      | 2            |
| 14        |          | CUTTER—left                  | 1            |
| 15        |          | LINK—connecting (w/rivets)   | 2            |
| 16        |          | LINK—drive                   | 1            |
| 17        |          | CUTTER—right                 | 1            |

\*Also fits 14" Bow Attachment.

\*\*Also fits Clearing Attachment.

Use 8 tooth sprocket 55593 with clearing attachment and bow attachment.

# HOMELITE CHAIN SAW MODEL 4-20

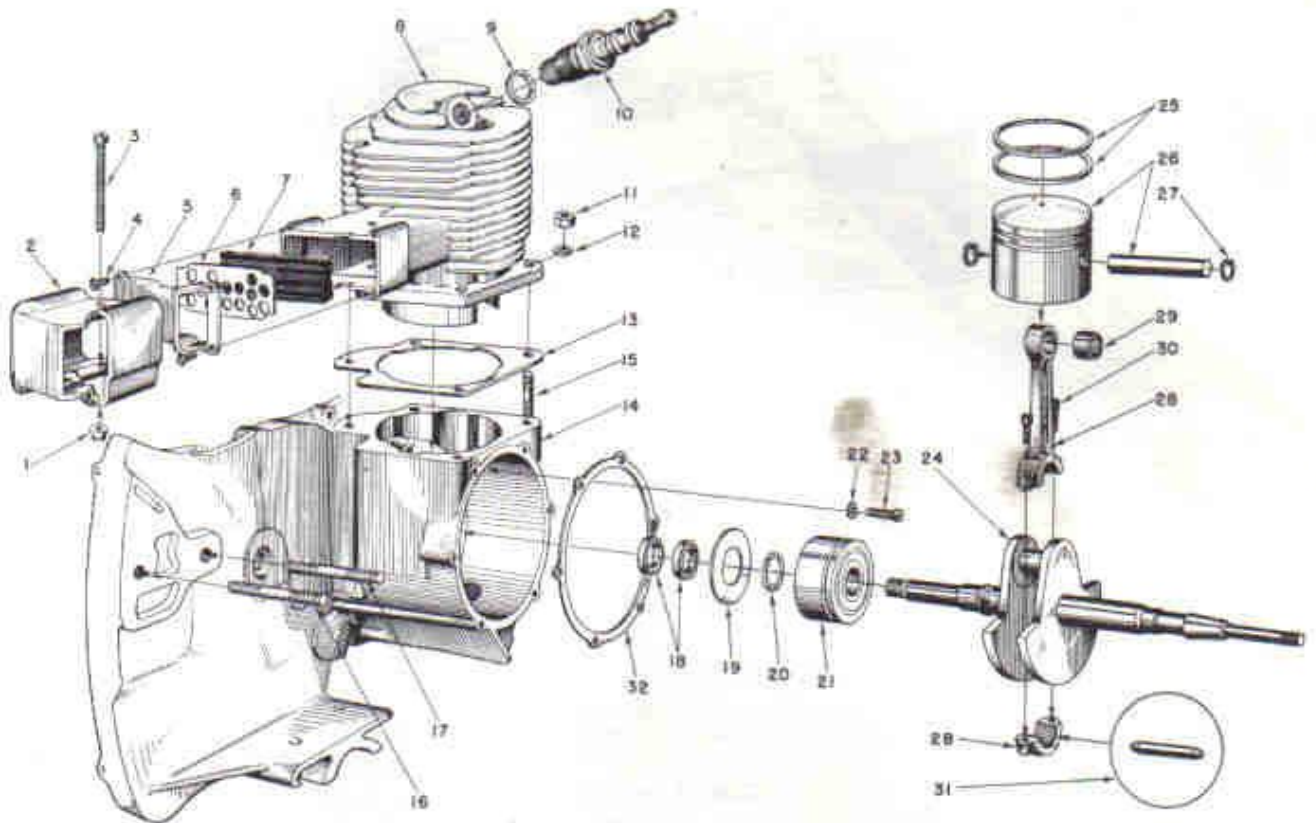


FIGURE 8 — ENGINE ASSEMBLY

SEPT. 1958

| Index No. | Part No. | Description                       | No. Required | Index No. | Part No. | Description                   | No. Required |
|-----------|----------|-----------------------------------|--------------|-----------|----------|-------------------------------|--------------|
| 1         | 81109    | NUT—10-32 flex-lock               | 1            | 18        | 71597    | SEAL—garlock                  | 2            |
| 2         | 55089-1  | DAMPER—heat                       | 1            | 19        | 55048-A  | GASKET—crankcase sealing      | 1            |
| 3         | 80574    | SCREW—10-32 x 1 1/8 rd. hd.       | 1            | 20        | 55047    | RING—retaining (main bearing) | 1            |
| 4         | 80630    | SCREW—6-32 x 1/2 spin-lock        | 4            | 21        | 55193    | BEARING—main                  | 1            |
| 5         | 55090-B  | CAP—exhaust                       | 1            | 22        | 83061    | WASHER—lock, spec. thin       | 2            |
| 6         | 55295-A  | RETAINER—muffler element          | 1            | 23        | 19238-A  | SCREW—main bearing retaining  | 2            |
| 7         | 55199    | ELEMENT—muffler                   | 1            | 24        | 55008-B  | CRANKSHAFT                    | 1            |
| 8         | 55000-B  | CYLINDER                          | 1            | 25        | 55038    | RING—piston                   | 2            |
| 9         | 25038    | GASKET—(included with spark plug) | 1            | 26        | AA-55279 | PISTON and PIN                | 1            |
| 10        | 71530    | SPARK PLUG—Champion HO-8A         | 1            |           |          | Includes                      |              |
| 11        | 81065-2  | NUT—1/4-28 hex                    | 4            | 27        | 55095    | RING—piston pin retaining     | 2            |
| 12        | 83009    | WASHER—1/4 lock                   | 4            | 28        | AA-55195 | CONNECTING ROD                | 1            |
| 13        | 55050-A  | GASKET—cylinder                   | 1            |           |          | Includes                      |              |
| 14        | A-55598  | CRANKCASE                         | 1            | 29        | 55196    | BEARING—piston pin            | 1            |
|           |          | Includes                          |              | 30        | 80541    | SCREW—8-32 x 1/2 allen cap    | 2            |
| 15        | 55871    | STUD—cylinder                     | 4            | 31        | AA-55280 | ROLLERS (set of 27)           | 1            |
| 16        | 55606    | STUD—guide bar (long)             | 1            | 32        | 55049    | GASKET—back plate             | 1            |
| 17        | 55056-D  | STUD—guide bar (short)            | 1            |           |          |                               |              |

Always furnish saw model and serial number when ordering parts.

# HOMELITE CHAIN SAW MODEL 4-20

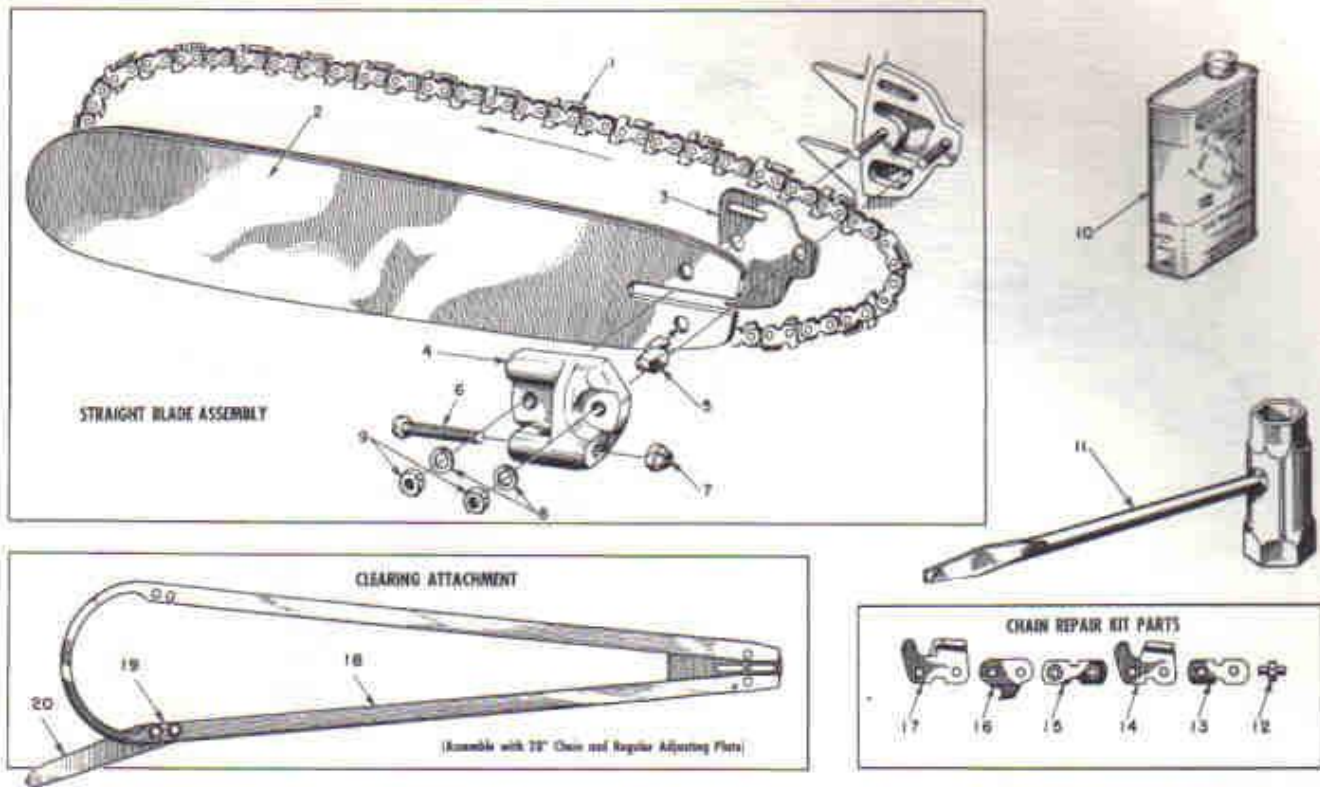


FIGURE 9 — SAW PARTS

SEPT. 1958

| Index No. | Part No.   | Description                                 | No. Required | Index No. | Part No.                     | Description                 | No. Required |
|-----------|------------|---|--------------|-----------|------------------------------|-----------------------------|--------------|
|           |            | <b>OREGON #10C 1/2 PITCH CHAIN</b>          |              |           |                              |                             |              |
| 1         | A-55338    | 14" CHAIN—(with kit)                        | 1            | 5         | 55552                        | PIN—guide bar adjusting     | 1            |
|           | AA-73338   | 18" CHAIN—(with kit)                        | 1            | 6         | 80617                        | SCREW—5/16-18 x 2 round hd. | 1            |
|           | A-55319    | 20" CHAIN—(with kit)                        | 1            | 7         | 81123                        | NUT—hex lock                | 1            |
|           | *AA-73340  | 23" CHAIN—(with kit)                        | 1            | 8         | 83018                        | WASHER—lock                 | 2            |
|           | **AA-73342 | 28" CHAIN—(with kit)                        | 1            | 9         | 81089                        | NUT—1/2-16 hex              | 2            |
|           | AA-73344   | 33" CHAIN—(with kit)                        | 1            | 10        | 55291-A                      | OIL—gear (pint can SAE-90)  | 1            |
|           | AA-73346   | 38" CHAIN—(with kit)                        | 1            | 11        | 22808                        | WRENCH—combination          | 2            |
| 2         | A-55714    | 14" BAR—.063                                | 1            | AA-73314  | REPAIR KIT—OREGON #10C CHAIN |                             |              |
|           | A-55718    | 18" BAR—hard track plus extra hard tip .063 | 1            |           | Includes                     |                             |              |
|           | A-55720    | 20" BAR—hard track plus extra hard tip .063 | 1            | 12        | RIVET                        | 4                           |              |
|           | A-55723    | 23" BAR—hard track plus extra hard tip .063 | 1            | 13        | LINK—connecting (plain)      | 2                           |              |
|           | A-55728    | 28" BAR—hard track plus extra hard tip .063 | 1            | 14        | CUTTER—left                  | 1                           |              |
|           | 55704-1    | 33" BAR—extra hard tip .063                 | 1            | 15        | LINK—connecting (w/rivets)   | 2                           |              |
|           | 55705-1    | 38" BAR—extra hard tip .063                 | 1            | 16        | LINK—drive                   | 1                           |              |
| 3         | 55128      | SHIM  | 1            | 17        | CUTTER—right                 | 1                           |              |
|           | A-55591    | ADJUSTING PLATE                             | 1            | 18        | A-56169-A                    | CLEARING ATTACHMENT         | 1            |
|           |            | Includes                                    |              |           | Includes                     |                             |              |
| 4         | 55551-B    | PLATE—adjusting                             | 1            | 19        | 80604                        | SCREW—hex hd. 5/16-24 x 1/2 | 2            |
|           |            |   |              | 20        | 73820                        | SPUR—plunging               | 1            |

\*Also fits 14" Bow Attachment.  
 \*\*Also fits Clearing Attachment.

# HOMELITE CHAIN SAW MODEL 4-20

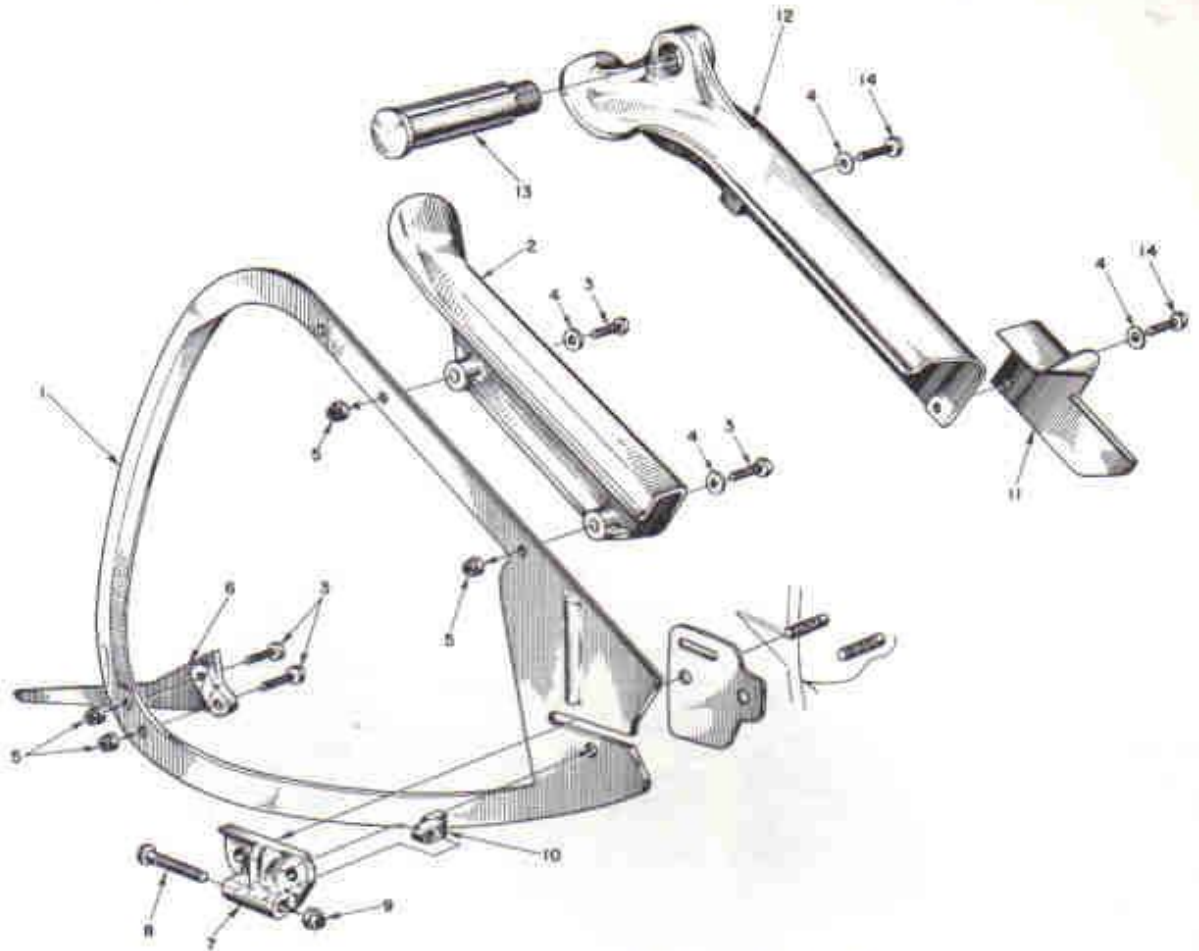


FIGURE 10 — PLUNGE CUT BOW ATTACHMENTS

SEPT. 1958

| Index No.   | Part No.  | Description                                       | No. Required |
|---|-----------|---|--------------|
| NOTE: Use left hand column parts list for SHORT GUARD MODEL Bow Attachment. |           |   |              |
| 1   | *55921    | 14" GUIDE—chain                                   | 1            |
|   | A-56192   | KIT—bow mounting (w/short guard)                  | 1            |
|   |           | Includes  |              |
| 2   | 55948     | GUARD—short                                       | 1            |
| 3   | 80546     | SCREW— $\frac{3}{16}$ "-24 x $1\frac{1}{4}$ " hex | 4            |
| 4   | 84001     | WASHER— $\frac{3}{16}$ " flat                     | 2            |
| 5   | 81112     | NUT— $\frac{3}{16}$ "-24 hex lock                 | 4            |
| 6   | 72784     | SPUR  | 1            |
| 7   | A-55591-1 | ADJUSTING PLATE (bow)                             | 1            |
|   |           | Includes  |              |
| 8   | 80617     | SCREW—tension adjusting                           | 1            |
| 9   | 81123     | NUT   | 1            |
| 10  | 55552     | PIN   | 1            |

| Index No.  | Part No.  | Description  | No. Required |
|--|-----------|--|--------------|
| NOTE: Use right hand column parts list for LONG GUARD MODEL Attachment with side handle. |           |  |              |
| 1  | *55921    | 14" GUIDE—chain  | 1            |
|  | A-55955   | KIT—bow mounting (w/side handle)                       | 1            |
|  |           | Includes   |              |
| 3  | 80546     | SCREW— $\frac{3}{16}$ "-24 x $1\frac{1}{4}$ " hex head | 2            |
| 4  | 84001     | WASHER— $\frac{3}{16}$ " flat                          | 2            |
| 5  | 81112     | NUT— $\frac{3}{16}$ "-24 hex lock                      | 4            |
| 6  | 72784     | SPUR   | 1            |
| 7  | A-55591-1 | ADJUSTING PLATE (bow)                                  | 1            |
|  |           | Includes   |              |
| 8  | 80617     | SCREW—tension adjusting                                | 1            |
| 9  | 81123     | NUT  | 1            |
| 10   | 55552     | PIN  | 1            |
| 11   | 55297     | GUARD  | 1            |
| 12   | 72779     | GUARD (for side handle)                                | 1            |
| 13   | 72226     | HANDLE—side  | 1            |
| 14   | 80559     | SCREW— $\frac{3}{16}$ "-24 x $1\frac{1}{2}$ " hex head | 2            |

\*Use 23" chain.

Always furnish saw model and serial number when ordering parts.

# HOMELITE

## Authorized Sales and Service Branches

Homelite sales and service factory branches are located throughout the country. Field representatives and factory-trained servicemen are always available, ready and able to keep your Homelites running in top performance at all times. See the "Yellow Pages" for the address and phone number of your nearest Homelite Branch office.

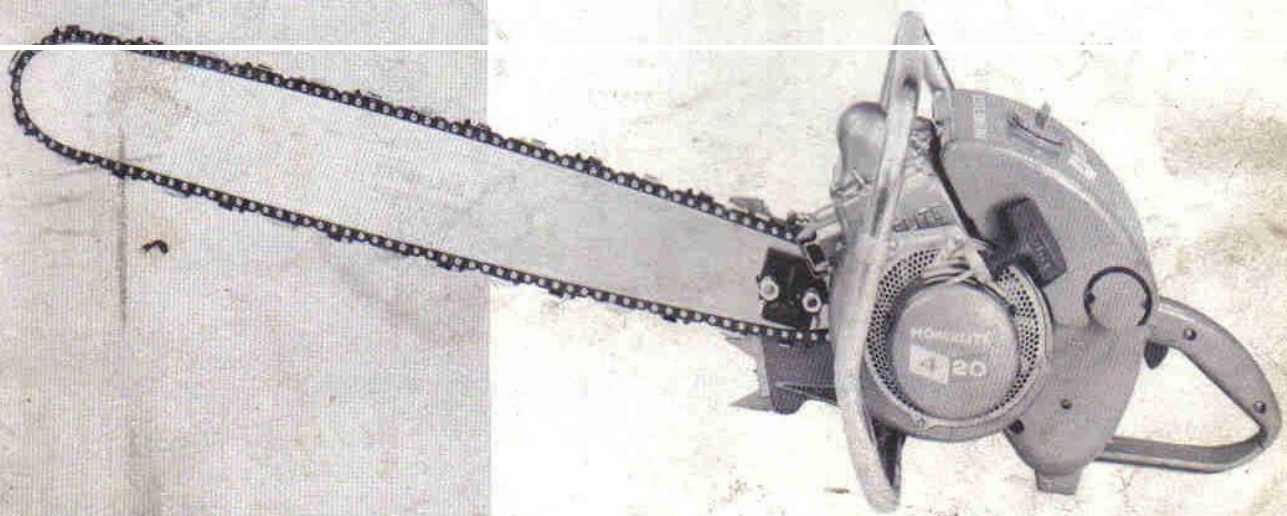
|                             |                       |                                  |
|-----------------------------|-----------------------|----------------------------------|
| <b>Alabama</b>              | <b>Mississippi</b>    | <b>Texas</b>                     |
| Birmingham                  | Jackson               | Cleveland                        |
| <b>California</b>           | <b>Missouri</b>       | Dallas                           |
| Alhambra (Los Angeles area) | Kansas City           | Houston                          |
| Fresno                      | St. Louis             | Lufkin                           |
| Sacramento                  | <b>Nebraska</b>       | Silsbee                          |
| S. San Francisco            | Omaha                 | <b>Utah</b>                      |
| <b>Colorado</b>             | <b>New Jersey</b>     | North Salt Lake                  |
| Denver                      | North Arlington       | <b>Virginia</b>                  |
| <b>Connecticut</b>          | Woodbridge            | Arlington                        |
| Byram                       | <b>New York</b>       | Richmond                         |
| Hartford                    | Buffalo               | Roanoke                          |
| <b>Florida</b>              | Latham (Albany area)  | <b>Washington</b>                |
| Jacksonville                | Rochester             | Seattle                          |
| Miami                       | Syracuse              | Spokane                          |
| <b>Georgia</b>              | <b>North Carolina</b> | <b>West Virginia</b>             |
| Atlanta                     | Charlotte             | Charleston                       |
| <b>Illinois</b>             | Raleigh               | Clarksburg                       |
| Bloomington                 | <b>Ohio</b>           | <b>Wisconsin</b>                 |
| Springfield                 | Cincinnati            | Milwaukee                        |
| Stone Park (Chicago area)   | Cleveland             | Green Bay                        |
| <b>Indiana</b>              | Toledo                |                                  |
| Indianapolis                | <b>Oklahoma</b>       |                                  |
| <b>Louisiana</b>            | Oklahoma City         | <b>DOMINION OF CANADA</b>        |
| Bossier City                | <b>Oregon</b>         | <b>TERRY MACHINERY CO., LTD.</b> |
| Metairie                    | Portland              |                                  |
| <b>Maine</b>                | <b>Pennsylvania</b>   | <b>Quebec</b>                    |
| Orono                       | Alltoona              | Montreal                         |
| <b>Maryland</b>             | Erie                  | <b>Alberta</b>                   |
| Baltimore                   | Harrisburg            | Edmonton                         |
| <b>Massachusetts</b>        | Hazleton              | <b>British Columbia</b>          |
| Allston (Boston area)       | Malvern               | Vancouver                        |
| <b>Michigan</b>             | Philadelphia          | <b>New Brunswick</b>             |
| Detroit                     | Pittsburgh            | Moncton                          |
| Escanaba                    | <b>Tennessee</b>      | <b>Ontario</b>                   |
| Grand Rapids                | Knoxville             | Ottawa                           |
| Saginaw                     | Memphis               | Toronto                          |
| <b>Minnesota</b>            |                       |                                  |
| St. Paul                    |                       |                                  |

**HOMELITE**  
a division of Textron Inc.  
PORT CHESTER, N. Y., U. S. A.

# **HOMELITE**

## *Chain Saw*

SEPT., 1958



### **PARTS LIST**



**Model 4-20**