

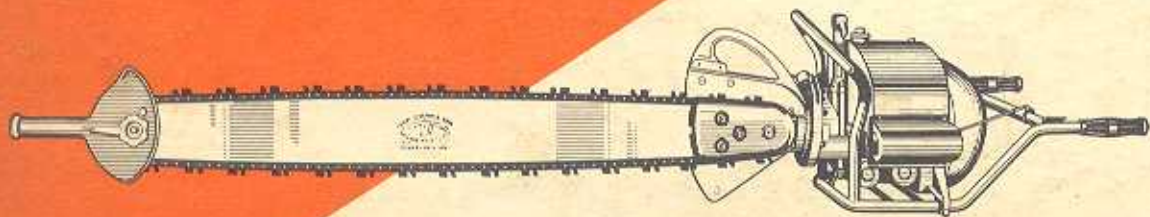


DISSTON

INTERMEDIATE CHAIN SAW

*with Mercury
Gasoline Engine*

**MODEL
DA-211**



PARTS CATALOG

HENRY DISSTON & SONS, INC., PHILADELPHIA 35, PA., U. S. A.

Repair Parts Catalog
for
MODEL DA-211
INTERMEDIATE CHAIN SAW

Starting with Serial No. 602864



Order parts from your nearest authorized Dealer or Distributor

HENRY DISSTON & SONS, INC., PHILADELPHIA 35, PA., U. S. A.

Parts Catalog

An illustrated guide for efficient servicing of Model DA-211 Disston Chain Saws with Mercury 9 H.P. gasoline powered engines.

This catalog was especially designed to make your work easier. Illustrations are keyed with reference numbers for quick identification and are near the group listings.

1. Consult Alphabetical Index for page on which assembly is listed.
2. Check the description and nearby illustration.
3. Always give the serial number and model number of your Chain Saw when ordering parts. The serial number and model will be found stamped on the name plate which is fastened on the right side of the clutch housing section of the crankcase.
4. Order by part number and description as shown in the group listing.
5. Be sure to specify shipping instructions on all parts orders.
6. Use only genuine Disston-Mercury renewal parts.

DISSTON CHAIN SAW

with Mercury Gasoline Engine

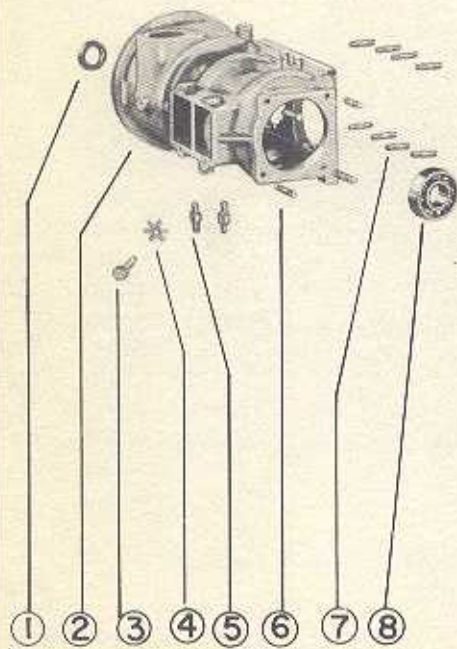
MODEL DA-211

Parts Catalog

Alphabetical Index

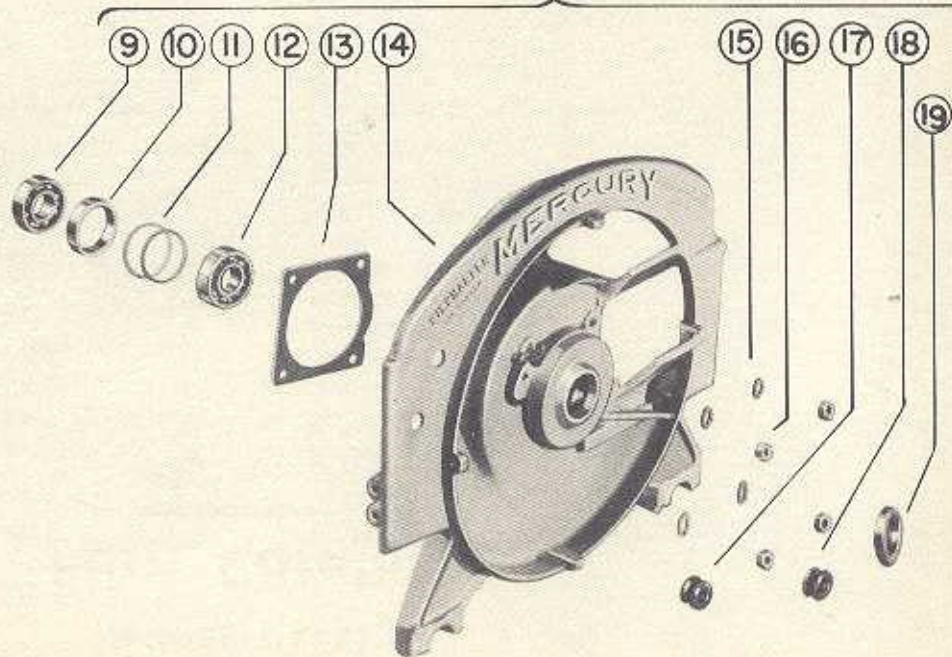
Description	Page No.	Description	Page No.
AIR FILTER	25	FUEL TANK AND FITTING	23
BEARING HOUSING	3	GASKET SET—ENGINE	43
BOW SAW ATTACHMENT	47	GUIDE RAILS	40
CARBURETOR	27	HOLDING CLAW	39
CARRYING FRAME	37	IGNITION SWITCH	33
CENTER MAIN BEARING	5	INLET VALVE	11
CHAINS—CUTTING—"C" TYPE	42	KEY—GUIDE RAIL	19
CHAINS—CUTTING—"L" TYPE	41	MAGNETO	33
CHAIN PARTS AND REPLACEMENT SETS	41 & 42	MANIFOLD—INLET VALVE	11
CHOKE	29	MUFFLERS	13
CHOKE CONTROLS	29	OILER—BOW SAW	49
CLAMP—TRANSMISSION MOUNTING	17	PISTONS	7
CLUTCH	21	RINGS—PISTON	7
CONNECTING ROD & ROLLERS	7	SPROCKET AND COVER	19
COWL—CYLINDER	35	STARTER	31
CRANKCASE	3	TAILSTOCK	39
CRANKSHAFT	5	TANK—FUEL	23
CYLINDERS	9	THROTTLE CONTROLS	27
DRUM—CLUTCH	15	TOOLS AND ACCESSORIES	45
FAN & FAN HOUSING	35	TRANSMISSION CASE	15
FUEL CAN	45	TRANSMISSION COVER	19

CRANK CASE AND BEARING HOUSING



CRANKCASE GROUP

BEARING HOUSING GROUP



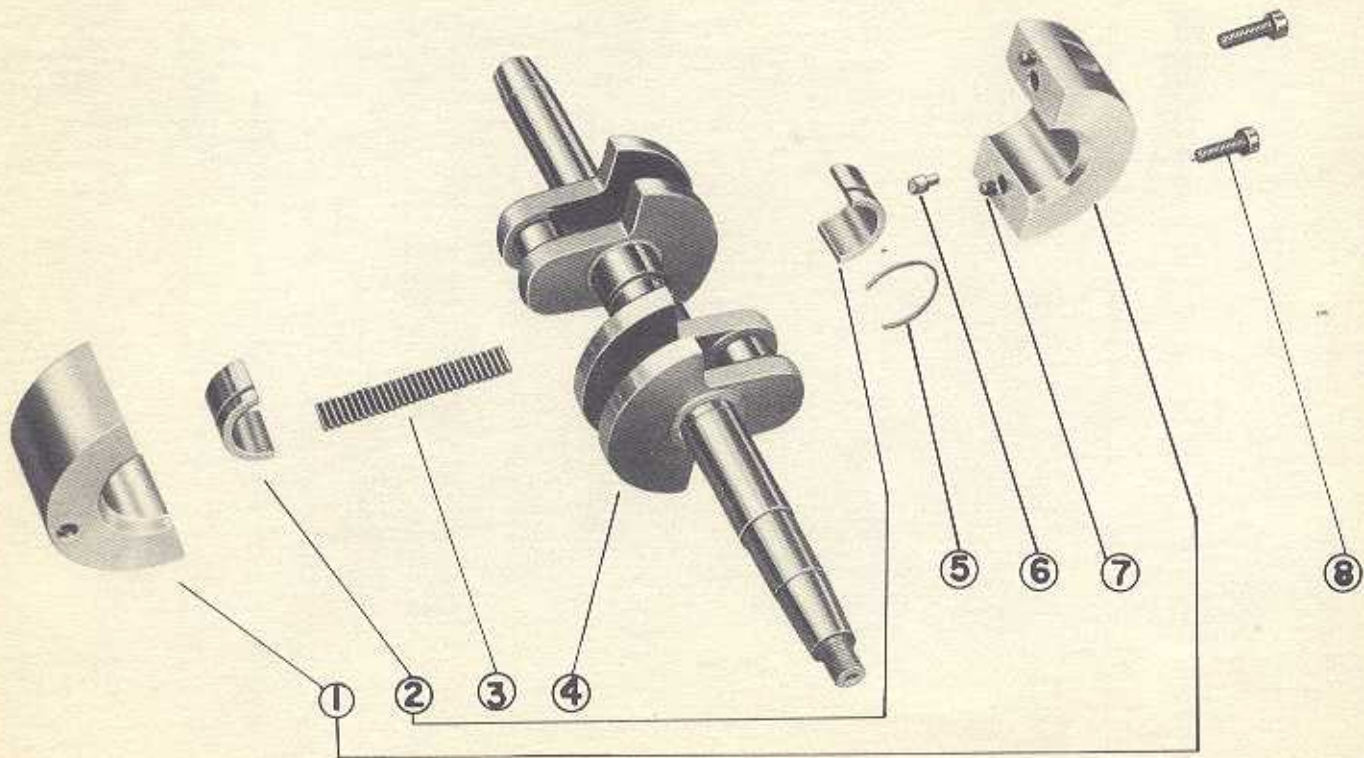
CRANKCASE AND BEARING HOUSING

Group 211-100

REF. NO.	PART NUMBER	DESCRIPTION	NO. REQ.
—	211-100	Crankcase Assembly	1
1	211-103	Seal—Oil—Mainshaft	1
2	211-101	Crankcase	1
—	230-455	Pin—Starter Spring Anchor	1
8	250-152	Bearing—Ball—Mainshaft	1
3	260-156	Screw—Center Main Bearing Lock	1
4	260-323	Washer—Tab—Center Main Bearing Lock Screw	1
5	211-102	Stud—Crankcase to Carrying Frame	2
6	211-104	Stud—Bearing Housing	4
7	211-104	Stud—Cylinder Base	8
—	211-105	Plate—Serial Number	1
—	211-112	Screw—Drive—Serial Number Plate	4
—	211-106	Housing Assembly—Main Bearing	1
12	250-152	Bearing—Ball—Mainshaft (outer)	1
14	211-107	Housing—Main Bearing	1
19	211-103	Seal—Oil—Mainshaft	1
9	250-152	Bearing—Ball—Mainshaft (inner)	1
10	211-108	Spacer—Ball Bearing	1
11	211-109-3	Shim—Ball Bearing—.003" Thick	*
11	211-109-5	Shim—Ball Bearing—.005" Thick	*
11	211-109-10	Shim—Ball Bearing—.010" Thick	*
13	211-111	Gasket—Bearing Housing	1
15	260-319	Washer—Lock—Bearing Housing Stud Nut	4
16	260-203	Nut—Bearing Housing Stud	4
17	211-110	Grommet—Choke Rod	1
18	260-408	Grommet—Ignition Switch Wire	1

*Shims: Quantities and thicknesses vary as required to attain correct original assembly. For replacement, use shims of same total thickness found in dis-assembly.

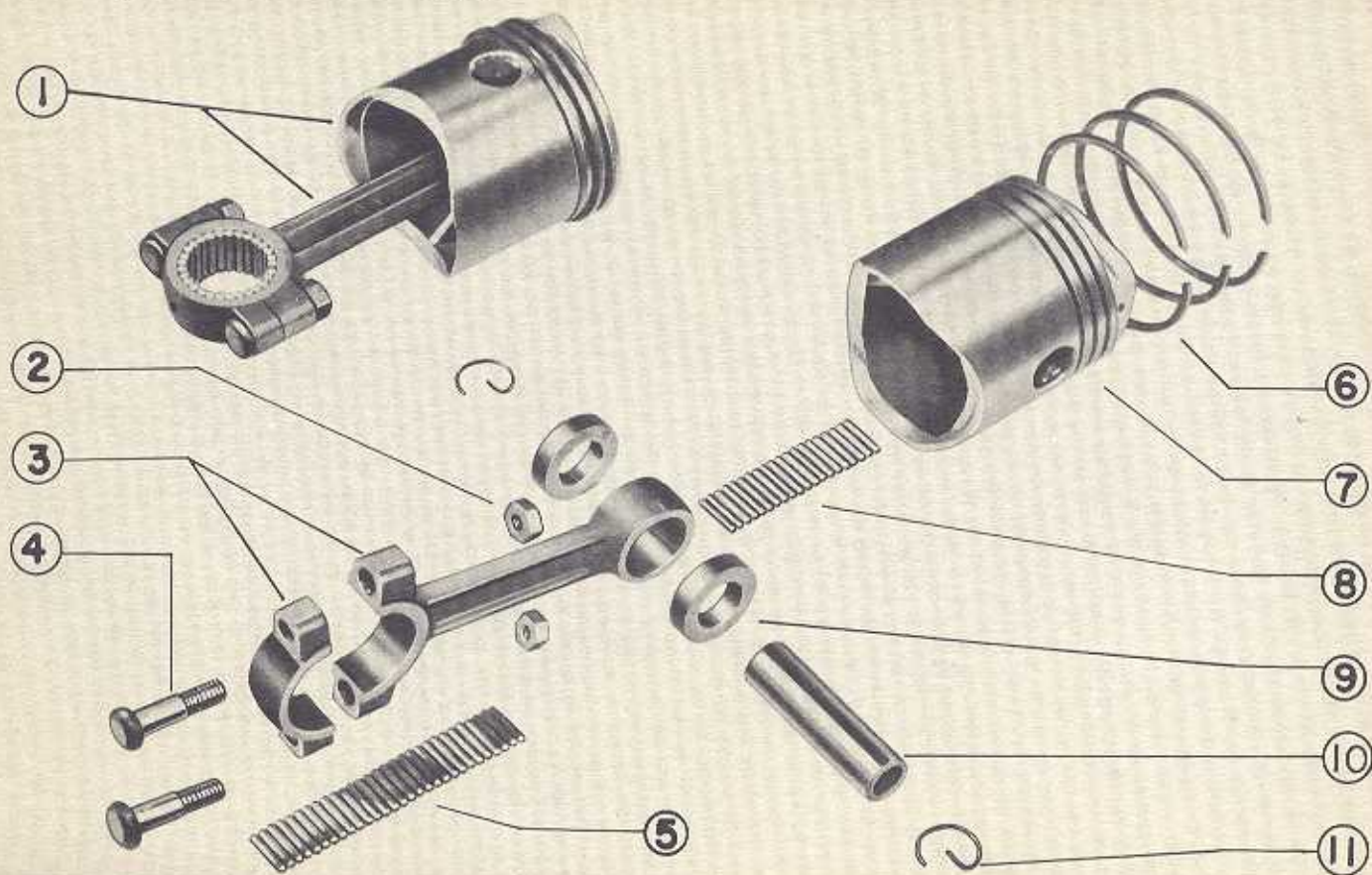
CRANKSHAFT AND CENTER MAIN BEARING



CRANKSHAFT AND CENTER MAIN BEARING**Group 211-200**

REF. NO.	PART NUMBER	DESCRIPTION	NO. REQ.
—	211-200	Crankshaft and Center Main Bearing Assembly	1
4	211-201	Crankshaft	1
1	211-202	Housing Assembly—Center Main Bearing	1
6	211-203	Pin—Bearing Race Locating	1
7	210-167	Pin—Dowel (not supplied separately)	2
8	260-121	Screw—Center Main Bearing Housing	2
3	211-204	Roller—Center Main Bearing	29
2	211-205	Race Assembly—Outer—Center Main Bearing	1
5	211-206	Lockring—Outer Race	1

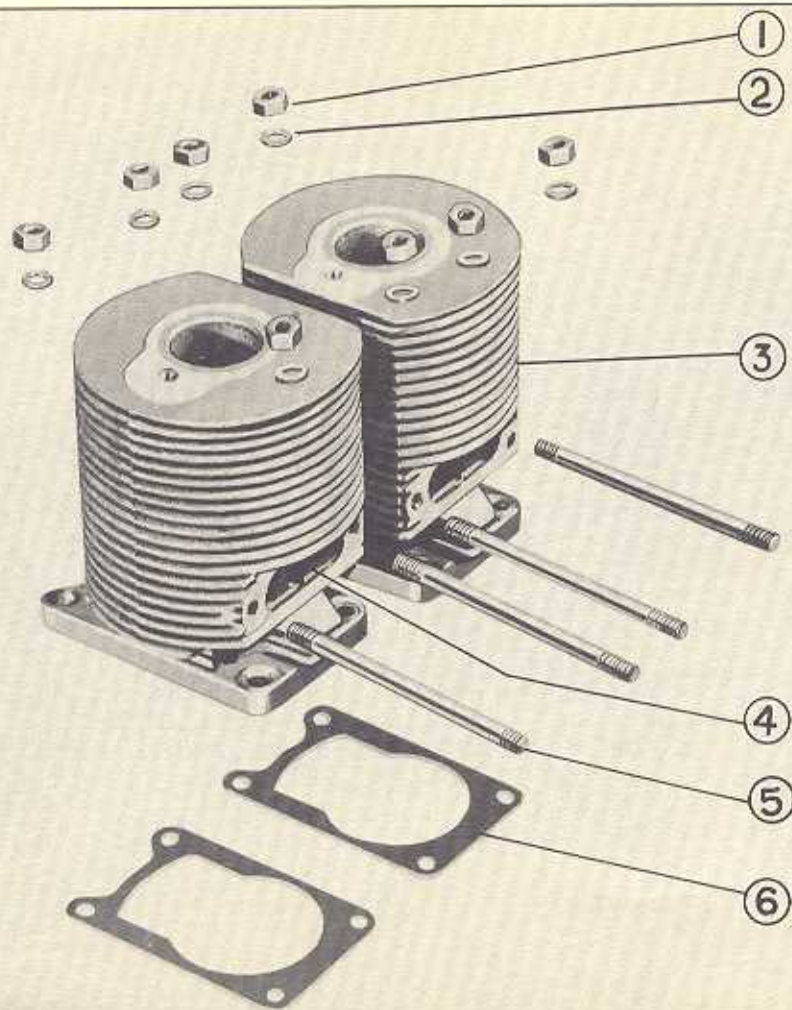
PISTON AND CONNECTING ROD ASSEMBLY



PISTON and CONNECTING ROD ASSEMBLY**GROUP 211-300**

REF. NO.	PART NUMBER	DESCRIPTION	NO. REQ.
1	211-305	Piston and Connecting Rod Assembly	2
—	211-303	Piston—Piston Pin and Ring Assembly	2
7	211-306	Piston and Pin Assembly (Less Rings)	2
10	210-208	Pin—Piston (Not Supplied Separately)	2
11	210-209	Lockring—Piston Pin	4
6	210-207	Ring—Piston	6
3	211-300	Rod Assembly—Connecting	2
2	210-265*	Nut—Connecting Rod Bolt	4
4	210-270	Bolt—Connecting Rod	4
5	211-204	Roller—Crankpin Bearing	58
8	211-204	Roller—Piston Pin Bearing	40
9	211-302	Collar—Connecting Rod Locating	4

CYLINDER

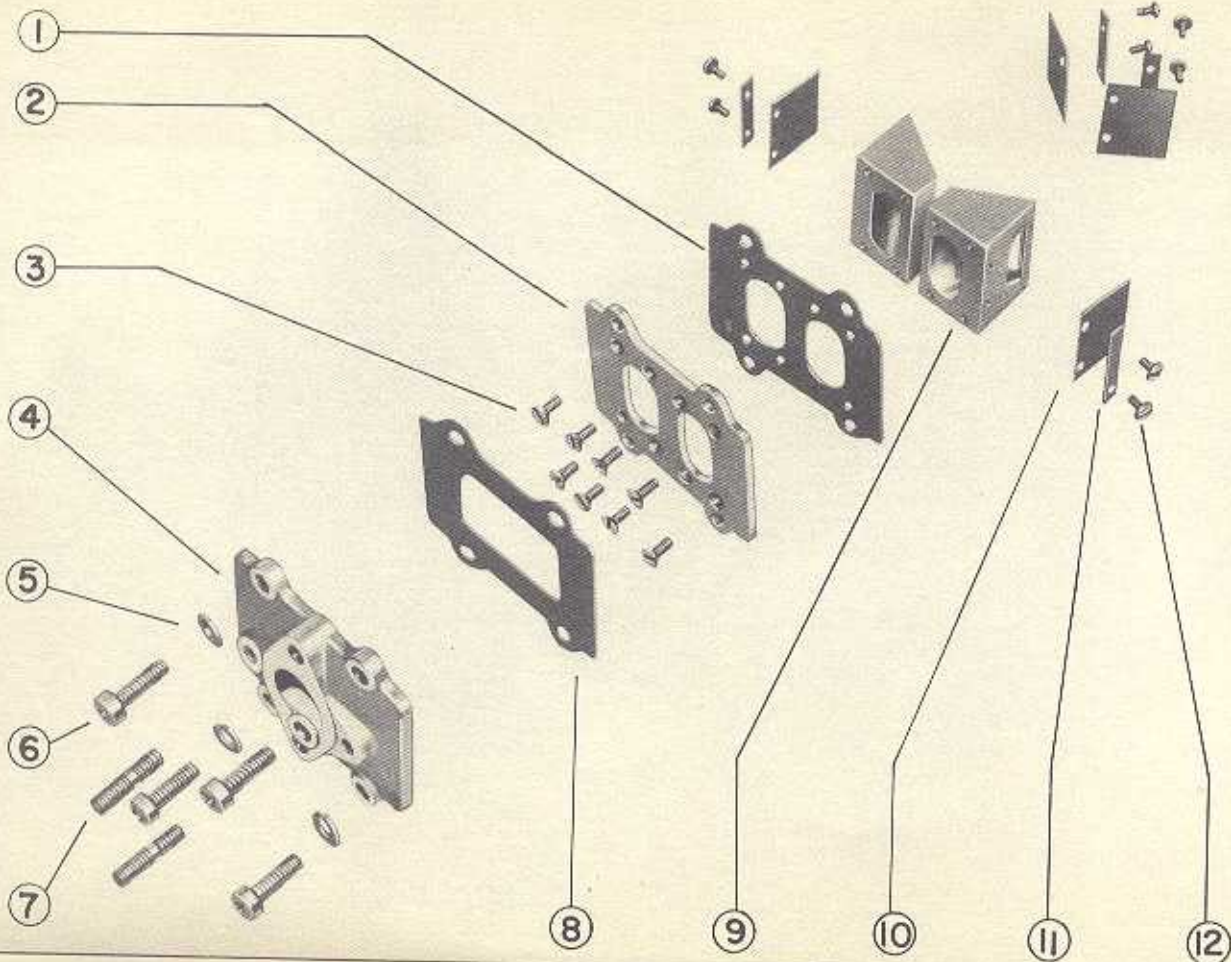


CYLINDER**Group 211-400**

REF. NO.	PART NUMBER	DESCRIPTION	NO. REQ.
1	260-203	Nut—Cylinder Base Stud	8
2	260-302	Washer—Plain—Cylinder Base Stud Nut	8
3	211-401	Cylinder Assembly—No. 2—Clutch Side	1
—	210-324	Insert—Spark Plug Thread (Helicoil)	1*
4	211-400	Cylinder Assembly—No. 1—Fan Side	1
—	210-324	Insert—Spark Plug Thread (Helicoil)	1*
5	211-402	Stud—Muffler Mounting	4
6	211-403	Gasket—Cylinder Base	2

*Helicoil Insert: Requires special installation tools.

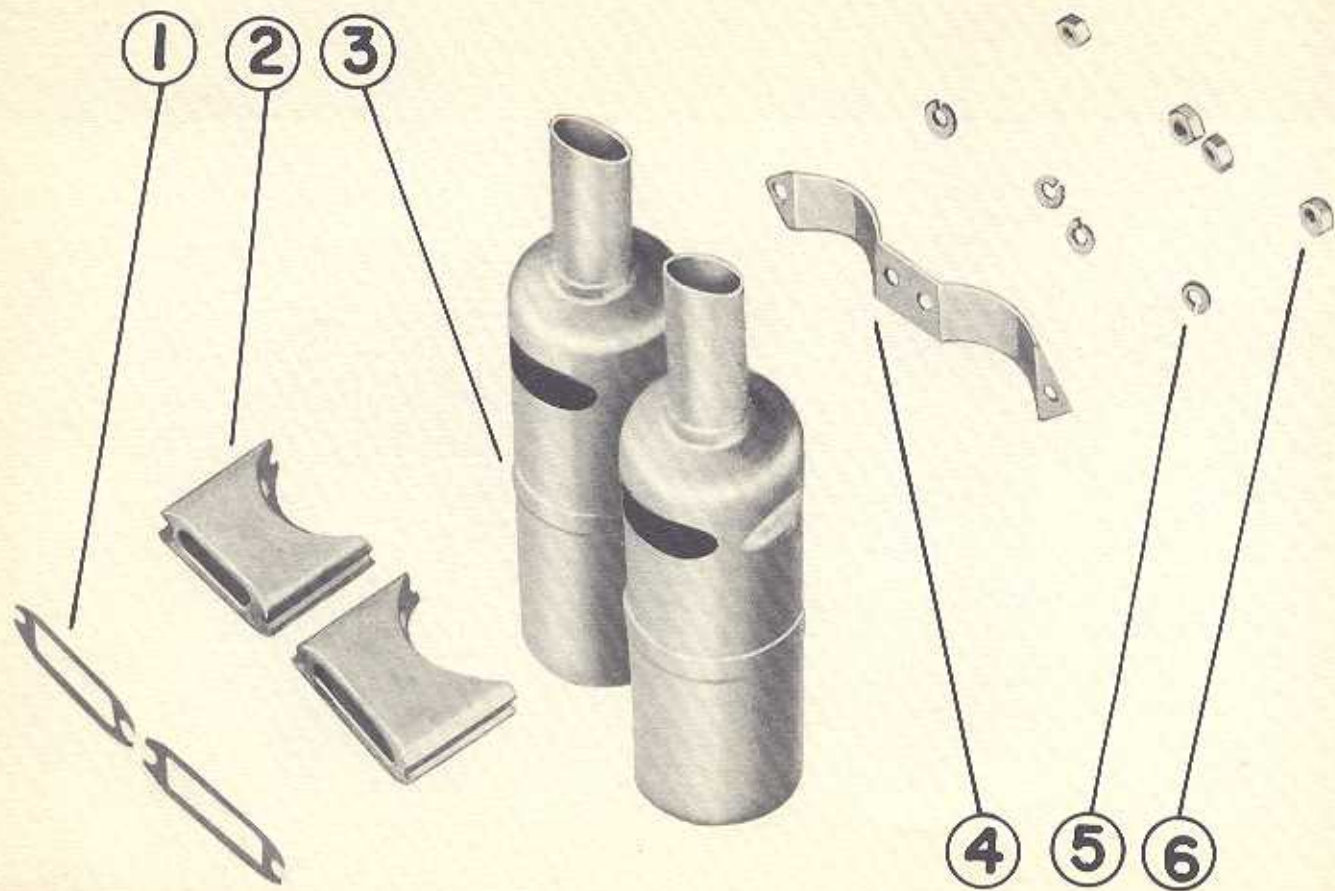
INLET VALVE



INLET VALVE**Group 211-500**

REF. NO.	PART NUMBER	DESCRIPTION	NO. REQ.
—	211-500	Valve Assembly—Inlet	1
1	211-502	Gasket—V-Block Mounting	1
2	211-501	Plate—V-Block Mounting	1
3	271-900	Screw—V-Block Fastening	8
9	211-503	V-Block—Inlet Valve Reed	2
10	211-504	Reed—Inlet Valve	4
11	211-505	Plate—Inlet Valve Reed Screw	4
12	260-125	Screw—Inlet Valve Reed	8
—	211-506	Manifold Assembly—Inlet Valve	1
4	211-507	Manifold—Inlet Valve	1
7	210-178	Stud—Carburetor Mounting	2
5	260-319	Washer—Lock—Inlet Valve and Manifold Screw	4
6	260-114	Screw—Inlet Valve and Manifold	4
8	211-508	Gasket—Inlet Valve Manifold	1

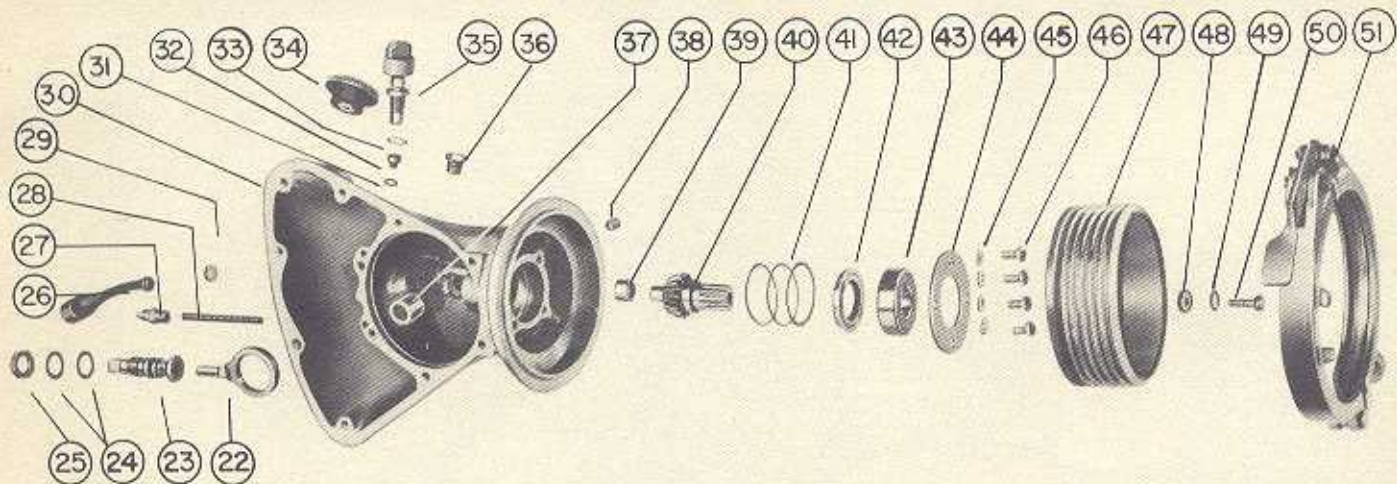
MUFFLER



MUFFLER**Group 211-700**

REF. NO.	PART NUMBER	DESCRIPTION	NO. REQ.
1	211-703	Gasket—Muffler Adapter Block	2
2	211-701	Block—Muffler Adapter	2
3	211-700	Muffler	2
4	211-702	Strap—Muffler Hold-down	1
5	260-319	Washer—Lock—Muffler Stud Nut	4
6	260-203	Nut—Muffler Stud	4

TRANSMISSION CASE



TRANSMISSION CASE

Group 212-100

REF. NO.	PART NUMBER	DESCRIPTION	NO. REQ.
	212-100	Transmission Assembly Complete—includes all parts in Transmission Case and Transmission Cover Groups as listed on pages 15, 17, and 19	1
22	212-115	Plunger Assembly—Oil Pump	1
23	212-120	Valve Assembly—Check and Relief	1
—	212-121	Body—Check Valve	1
—	212-123	Seal—"O" Ring—Oil Pump Plunger	1
—	240-122	Seal—"O" Ring—Check Valve Body	1
—	271-903	Ball—Check Valve	1
—	271-904	Spring—Check Valve	1
—	212-117	Valve Assembly—Pressure Relief	1
—	212-119	Gasket—Pressure Relief Valve Body	1
24	212-122	Gasket—Check Valve Body	2
25	212-124	Nut—Check Valve Body	1
26	271-909	Tube Assembly—Oil Pick-up	1
—	271-910	Tube—Oil Pick-up	1
—	271-911	Screen and Weight Assembly	1
27	271-907	Fitting—Oil Pick-up Tube Connection	1
28	271-908	Spring—Oil Pick-up Tube	1
30	212-101	Case Assembly—Transmission	1
29	271-901***	Plug Welch	1
37	250-195	Bearing—Roller—Sprocket Shaft	1**
38	260-402	Plug—Transmission Oil Level	1
39	250-196	Bearing—Roller—Pinion Shaft	1**
34	212-136	Cap Assembly—Chain Oil Reservoir	1
—	212-137	Cap—Chain Oil Reservoir Filler	1
—	220-380	Gasket—Chain Oil Reservoir Filler Cap	1
—	212-138	Body—Filler Cap Air Vent Valve	1
—	212-119	Gasket—Air Vent Valve	1
—	271-903	Ball—Air Vent Valve	1
—	271-904	Spring—Air Vent Valve	1
—	271-906	Screw—Air Vent Valve	1
—	212-140	Screen—Air Vent Valve	1
—	212-141	Retainer—Air Vent Valve Screen	1

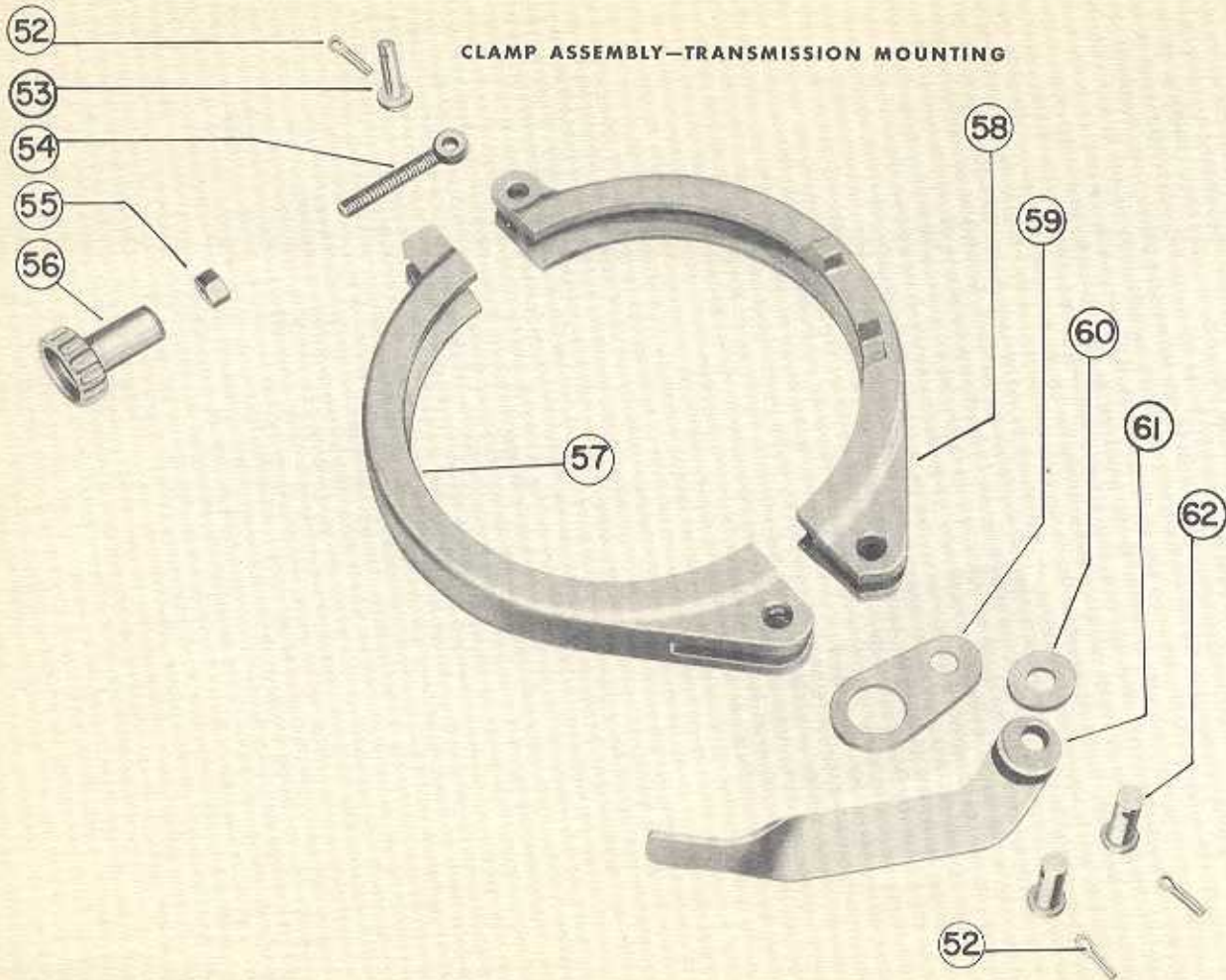
*Shims: Quantities and thicknesses vary as required to attain correct fit during original Assembly. For replacement, use shims of same total thickness found in dis-assembly.

**Special Installation Tools required.

REF. NO.	PART NUMBER	DESCRIPTION	NO. REQ.
35	212-142	Valve Assembly—Chain Oiler Adjusting	1
—	212-143	Body—Chain Oiler Adjusting Valve	1
—	212-147	Needle—Oil Feed Adjusting Valve	1
—	220-126	Packing—Adjusting Valve Needle	1
—	220-125	Nut—Adjusting Valve Needle Packing	1
—	212-148	Knob—Oil Feed Adjusting Valve	1
—	212-149	Setscrew—Adjusting Valve Knob	1
32	212-144	Seal—Adjusting Needle	1
31	260-587	Seal—"O" Ring—Oiler Adjusting Valve	1
33	212-146	Gasket—Adjusting Valve Body	1
36	212-125	Plug Assembly—Transmission Oil Filter	1
—	271-903	Ball—Filler Plug Air Vent Valve	1
—	271-904	Spring—Filler Plug Air Vent Valve	1
—	271-906	Screw—Filler Plug Air Vent Valve	1
40	212-103	Gear and Shaft—Pinion	1
41	211-109-3	Shim—Ball Bearing—.003" Thick	*
41	211-109-5	Shim—Ball Bearing—.005" Thick	*
41	211-109-10	Shim—Ball Bearing—.010" Thick	*
42	212-139	Seal Assembly—Oil—Pinion Shaft	1
43	212-104	Bearing—Ball—Pinion Gear Shaft	1
44	212-105	Plate—Ball Bearing Retaining	1
45	260-319	Washer—Lock—Retaining Plate Screw	4
46	260-129	Screw—Ball Bearing Retaining Plate	4
47	212-108	Drum—Clutch	1
48	212-109	Washer—Clutch Drum Screw	1
49	212-412	Washer—Lock—Clutch Drum Screw	1
50	240-233	Screw—Clutch Drum	1
51	212-170	Clamp Assembly—Transmission Mounting (see page 17 for Clamp Assembly component parts)	1

***Starting with engine Serial No. 607180, Welch Plug, Pt. No. 271-930 is used. All reinforced transmission cases require Pt. No. 271-930 Welch Plug.

CLAMP ASSEMBLY—TRANSMISSION MOUNTING

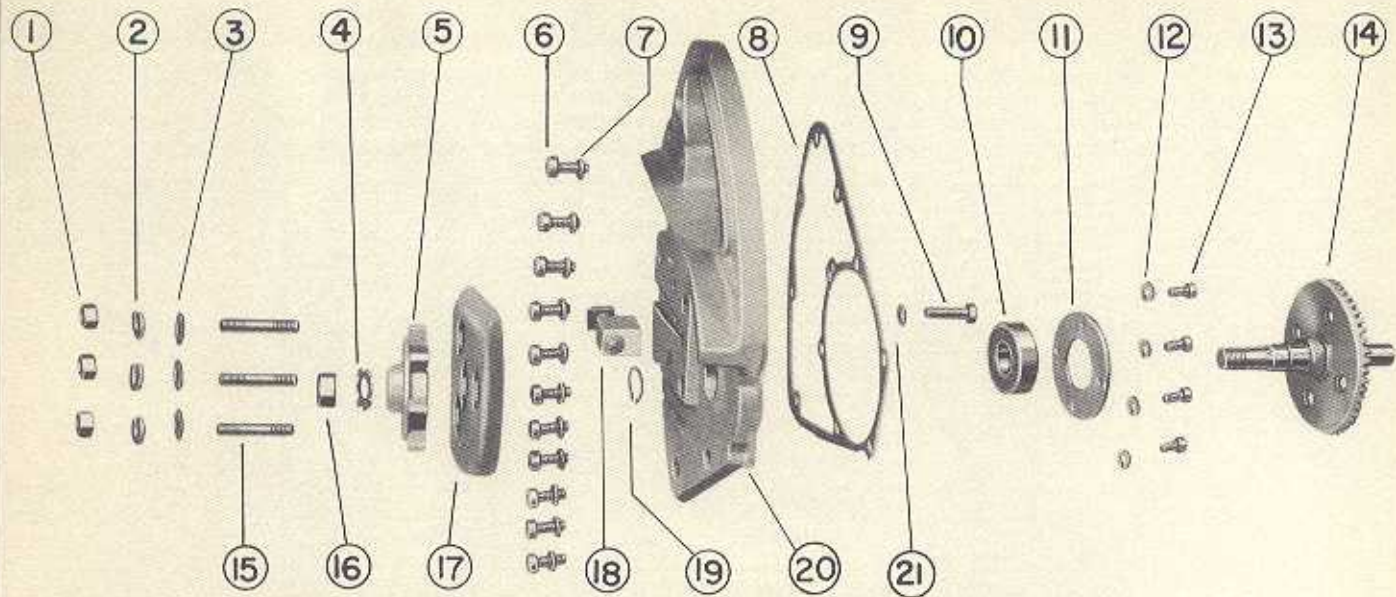


CLAMP ASSEMBLY—TRANSMISSION MOUNTING GROUP 212-150

REF. NO.	PART NUMBER	DESCRIPTION	NO. REQ.
—	212-170*	Clamp Assembly—Transmission Mounting	1
52	220-217	Coller Pin	3
53	212-158	Pin—Clamp Eyebolt	1
54	212-156	Eyebolt—Clamp	1
55	271-933*	Nut—Clamp Ring Lock	1
56	212-157	Knob—Clamp Tension Adjusting	1
57	212-151	Clamp—Top Half	1
58	212-152	Clamp—Bottom Half	1
59	212-154	Link—Cam Lever	1
60	212-159	Washer—Flat—Cam Lever Link	1
61	212-153	Lever—Cam	1
62	212-155	Pin—Cam Lever Link	2

*This Clamp Assembly was formerly identified as Part No. 212-150. Clamp Assembly Part No. 212-150 included two jam nuts Part No. 217-912 on the eyebolt which have been replaced by one friction-type lock nut Part No. 271-933 on the new Part No. 212-170 Clamp Assembly. Since the only change is in the lock nuts, Part Nos. 212-150 and 212-170 Clamp Assemblies are interchangeable. Clamp Assembly-Part No. 212-150 is no longer available from factory stock.

TRANSMISSION COVER

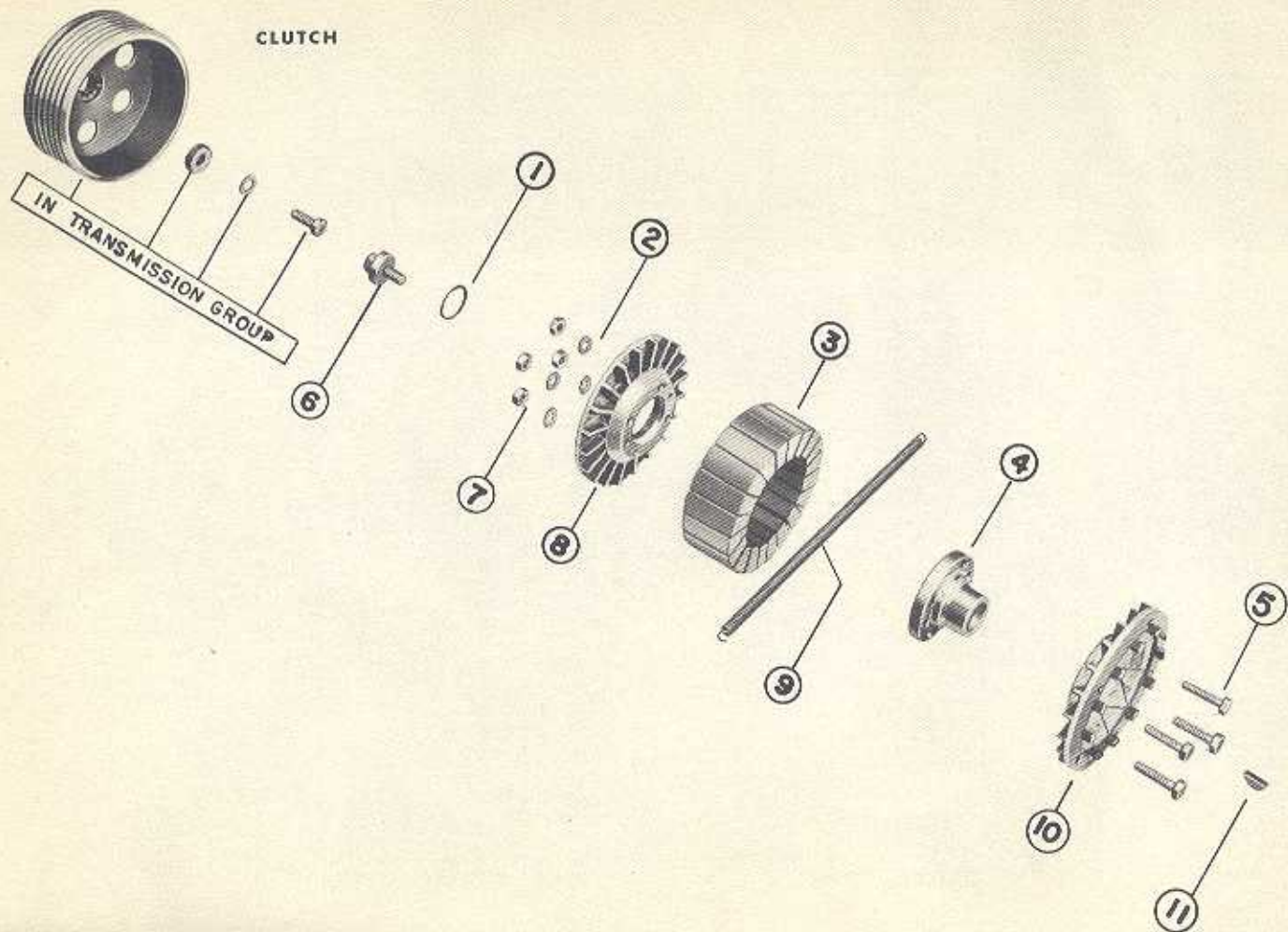


TRANSMISSION COVER**Group 212-100**

REF. NO.	PART NUMBER	DESCRIPTION	NO. REQ.
1	230-468	Nut—Guide Rail Mounting Stud	3
2	260-343	Washer—Lock—Guide Rail Mounting Stud	3
3	260-353	Washer—Flat—Guide Rail Mounting Stud	3
4	212-304	Washer—Tab—Sprocket Nut	1
5	212-300	Sprocket Assembly	1
6	212-129	Screw—Transmission Case Cover	11
7	212-412	Washer—Lock—Cover Screw	11
8	212-128	Gasket—Transmission Case Cover	1
9	212-133	Screw—Guide Rail Key Fastening	1
10	212-104	Bearing—Ball—Sprocket Shaft	1
11	212-105	Plate—Ball—Bearing Retaining	1
12	260-319	Washer—Lock—Retaining Plate Screw	4
13	260-125	Screw—Ball Bearing Retaining Plate	4
14	212-110	Shaft and Gear Assembly—Sprocket	1
—	212-111	Gear—Sprocket Shaft	1
—	212-112	Shaft—Sprocket	1
—	212-113	Key—Sprocket Shaft Gear	1
15	*212-134	Stud—Guide Rail Mounting (straight type)	3
15	*212-134-1	Stud—Guide Rail Mounting (shoulder type)	3
16	212-305	Nut—Sprocket	1
17	212-135	Cover—Sprocket	1
18	212-130	Key Assembly—Guide Rail	1
—	212-132	Block—Chain Tensioning	1
19	212-114	Lockring—Sprocket Shaft Ball Bearing	1
20	*212-127-1	Cover—Transmission Case	1
21	212-412	Washer—Lock—Guide Rail Key Screw	1
—	212-106	Plug—Drill—Oil Passage	1

*Transmission Case Cover, Pt. No. 212-127 now discontinued—requires straight type studs, Pt. No. 212-134. Shoulder type studs, Pt. No. 212-134-1 will fit only in transmission case cover, Pt. No. 212-127-1.

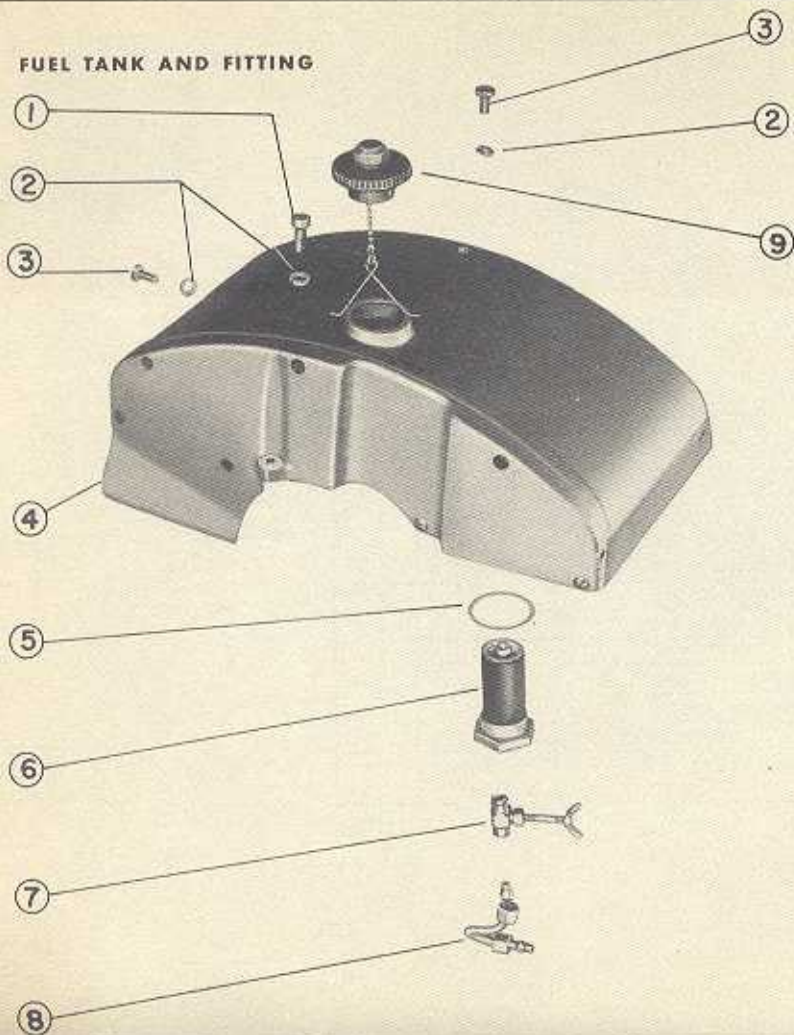
CLUTCH



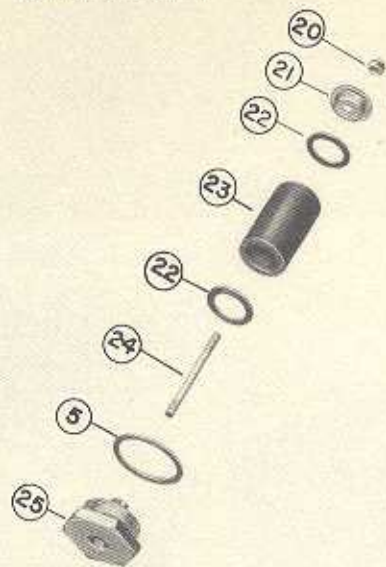
CLUTCH**Group 212-600**

REF. NO.	PART NUMBER	DESCRIPTION	NO. REQ.
—	212-600	Clutch Assembly	1
1	212-611	Lockring—Clutch Hub Screw	1
2	260-319	Washer—Lock—Spider—Hub Bolt	4
3	212-608	Shoe Segment—Friction (see also 212-609)	20
4	212-601	Hub—Clutch	1
5	212-607	Bolt—Spider Hub	4
6	212-610	Screw—Clutch Hub	1
7	260-203	Nut—Spider—Hub Bolt	4
8	212-602	Spider—Friction Shoe	1
9	212-609	Spring—Friction Shoe Retracting	1
10	212-603	Spider and Ratchet Assembly	1
11	212-113	Key—Clutch Hub	1

FUEL TANK AND FITTING



FILTER ASSEMBLY

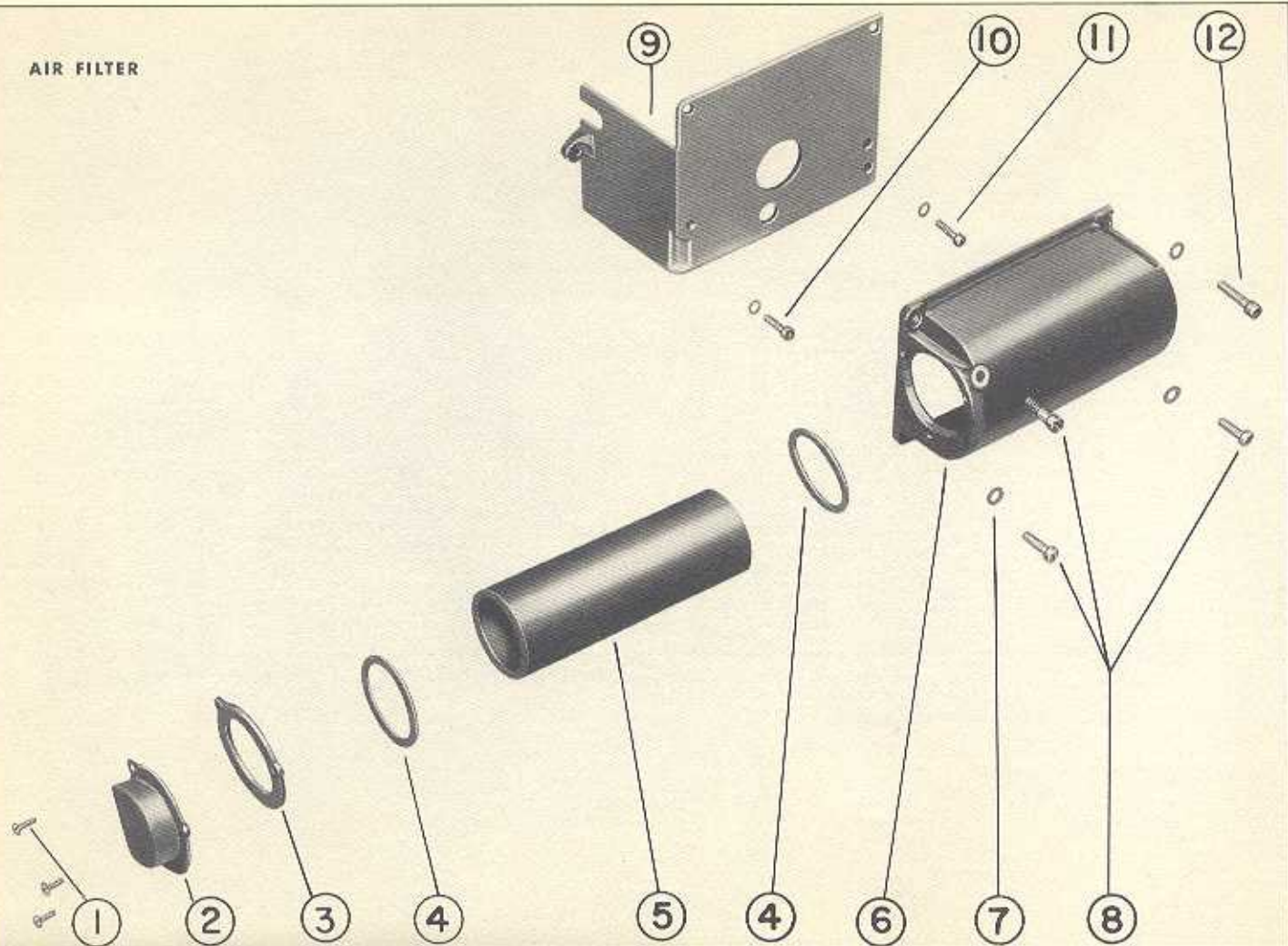


FUEL TANK and FITTING**Group 221-300**

REF. NO.	PART NUMBER	DESCRIPTION	NO. REQ.
—	221-305	Tank and Fitting Assembly—Fuel	1
4	221-300	Tank—Fuel	1
7	221-301	Valve Assembly—Fuel Shut-off	1
8	221-302	Line Assembly—Fuel	1
—	221-303	Line—Fuel	1
—	260-410	Sleeve—Compression	2
—	260-411	Nut—Fuel Line	2
9	221-306	Cap Assembly—Fuel Tank Filler	1
—	220-380	Gasket—Fuel Tank Filler Cap	1
—	220-217	Cotter Pin	1

REF. NO.	PART NUMBER	DESCRIPTION	NO. REQ.
6	220-349	Filter Assembly—Fuel	1
5	220-371	Gasket—Fuel Filter Body	1
20	260-210	Nut—Filter Element Mounting Stud	1
21	220-354	Cap—Filter Element End	1
22	220-352	Gasket—Filter Element End	2
23	220-353	Element—Fuel Filter	1
24	220-355	Stud—Filter Element Mounting	1
25	220-350	Body—Fuel Filter	1
1	260-114	Screw—Fuel Tank to Crankcase	1
2	260-319	Washer—Lock—Fuel Tank Mounting Screw	3
3	260-129	Screw—Fuel Tank to Bearing Housing	2

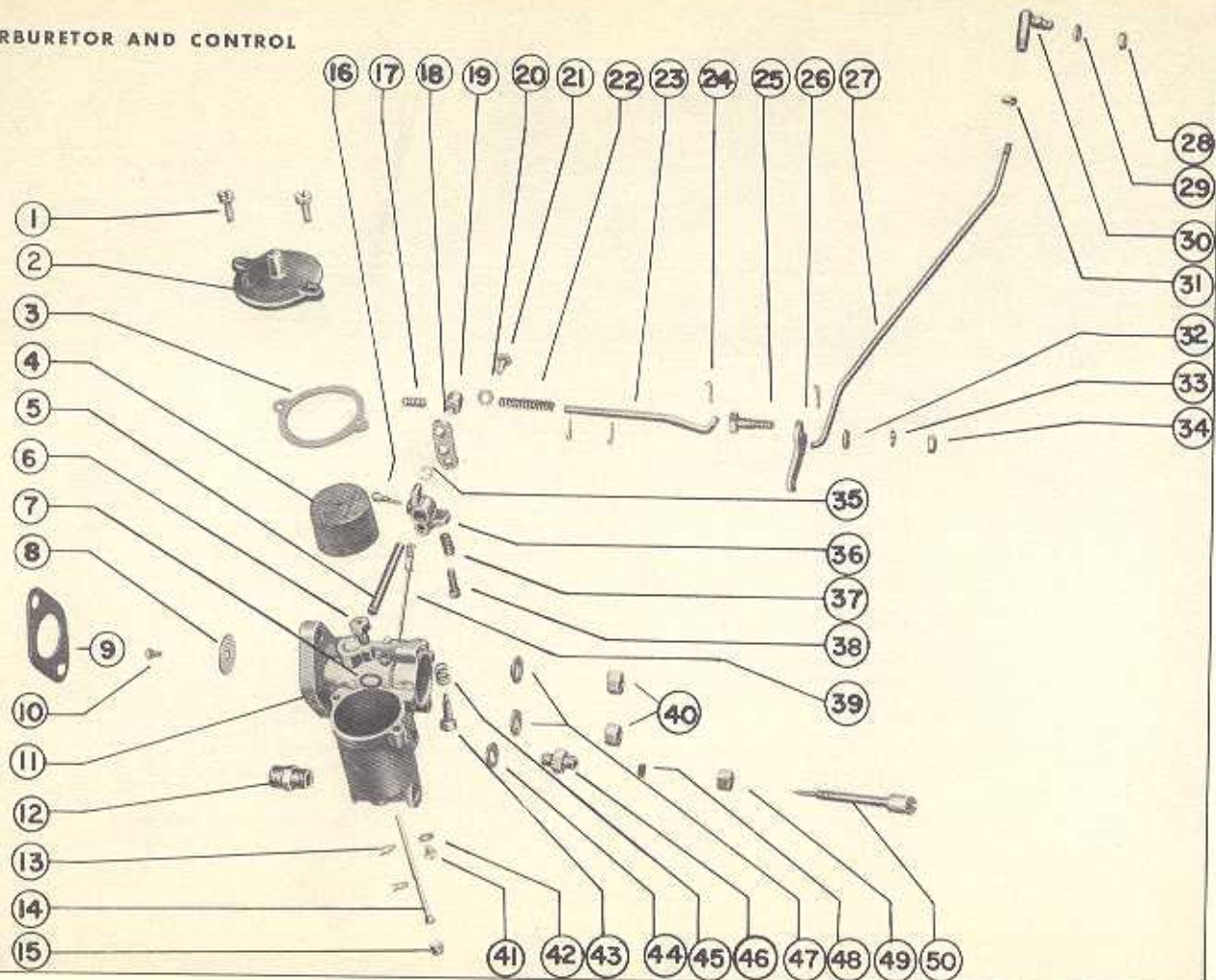
AIR FILTER



AIR FILTER**Group 221-400**

REF. NO.	PART NUMBER	DESCRIPTION	NO. REQ.
—	221-400	Filter Assembly—Air	1
1	260-126	Screw—Endcap	3
2	221-403	Endcap—Filter Element	1
3	221-402	Plate—Filter Element Retaining	1
4	221-405	Gasket—Filter Element (Rubber)	2
5	221-404	Element—Air Filter	1
6	221-401	Housing—Air Filter	1
7	260-319	Washer—Lock—Air Filter Mounting Screw	4
8	260-114	Screw—Air Filter Mounting (Short)	3
9	221-406	Plate—Air Filter Adapter	1
10	260-114	Screw—Air Filter Adapter Plate	1
11	260-129	Screw—Air Filter Adapter Plate	1
12	260-117	Screw—Air Filter Mounting (Long)	1
—	260-319	Washer—Lock—Air Filter Adapter Plate Screw	2
—	221-104	Plate—Instruction	1
—	260-146	Screw—Drive—Instruction Plate	4

CARBURETOR AND CONTROL

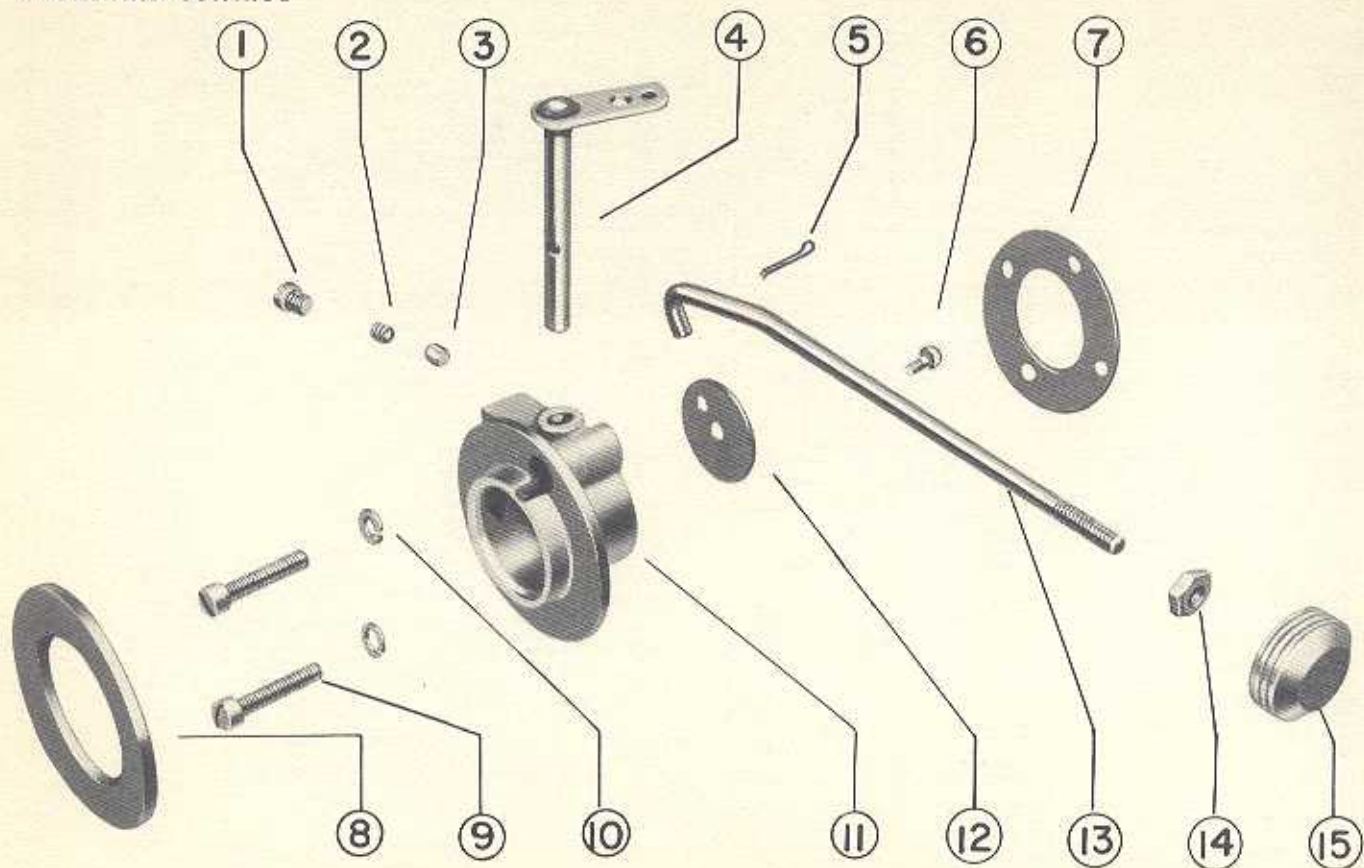


CARBURETOR and CONTROL Group 221-500

REF. NO.	PART NUMBER	DESCRIPTION	NO. REQ.
—	221-500	Carburetor Assembly	1
11	221-501	Body Assembly	1
—	221-503	Pin—Throttle Stop	1
—	220-146	Plug—Channel Drill	1
—	221-504	Plug—Welch	1
—	220-108	Plug—Welch	1
1	220-161	Screw and Lockwasher—Bowl Cover	2
2	271-913	Cover—Bowl	1
3	220-106	Gasket—Bowl Cover	1
4	220-103	Floater	1
5	221-510	Shaft—Throttle	1
6 & 14	220-111	Valve and Seal—Fuel Inlet	1
7	220-115	Gasket—Fuel Inlet Valve Seat	1
8	221-511	Disc—Throttle	1
10	221-512	Screw and Lockwasher—Throttle Disc	1
13	220-114	Clip—Floater	2
15	220-117	Plug—Inlet Valve	1
16	220-159	Screw—Throttle Shaft Lever	1
36	221-513	Lever—Throttle Shaft	1
37	221-515	Spring—Idle Speed Adjusting Screw	1
38	221-514	Screw—Idle Speed Adjusting	1
39	220-133	Tube—By-pass	1
41	260-109	Screw—Bowl Drain	1
42	220-144	Gasket—Bowl Drain Screw	1
43	220-107	Valve—Low Speed Needle	1
44	220-128	Gasket—High Speed Needle Valve Gland	1
45	221-509	Spring—Low Speed Needle Valve	1
46	220-127	Gland—High Speed Needle Valve	1
48	220-125	Packing—Gland	1
49	220-125	Nut—Gland	1
50	221-508	Valve—High Speed Needle	1

REF. NO.	PART NUMBER	DESCRIPTION	NO. REQ.
9	221-516	Gasket—Carburetor Mounting Flange	1
12	221-304	Fitting—Fuel Line Connection	1
17	221-520	Spring—Throttle Control Rod— $\frac{1}{2}$ "	1
18	221-517	Plate—Throttle Lever	1
19	221-518	Swivel—Throttle Lever	1
20	260-307	Washer—Lock—Throttle Lever Plate Screw	1
21	260-150	Screw—Throttle Lever Plate	1
22	221-521	Spring—Throttle Control Rod— $\frac{1}{4}$ "	1
23	221-519	Rod—Throttle Control (Short)	1
24	220-217	Collar Pin	4
25	221-523	Screw—Link Lever Pivot	1
26	221-522	Lever—Control Rod Link	1
27	221-524	Rod—Throttle Control (Long)	1
28	260-209	Nut—Ball Joint Stud	1
29	260-309	Washer—Lock—Ball Joint Fitting Stud	1
30	221-525	Fitting—Ball Joint—Throttle Rod	1
31	221-526	Nut—Lock—Ball Joint Fitting	1
32	230-312	Washer—Plain—Link Lever Pivot Screw	1
33	260-305	Washer—Lock—Link Lever Pivot Screw	1
34	260-209	Nut—Link Lever Pivot Screw	1
35	241-339	Lockring—Throttle Lever Swivel	1
40	260-203	Nut—Carburetor Mounting Stud	2
47	260-302	Washer—Plain—Mounting Stud Nut	2

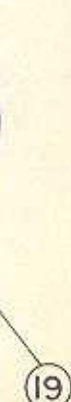
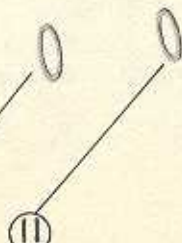
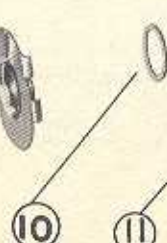
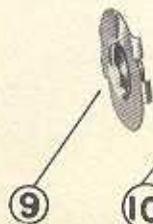
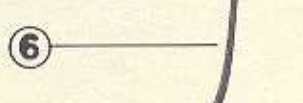
CHOKE AND CONTROL



CHOKE AND CONTROL**Group 221-600**

REF. NO.	PART NUMBER	DESCRIPTION	NO. REQ.
—	221-600	Choke Assembly	1
1	221-610	Screw—Choke Shaft Lock Plunger	1
2	221-609	Spring—Choke Shaft Lock Plunger	1
3	221-608	Plunger—Choke Shaft Lock	1
4	221-605	Shaft and Lever—Choke	1
6	221-607	Screw and Lockwasher—Choke Disc	1
11	221-601	Body Assembly—Choke	1
—	221-604	Pin—Stop	1
12	221-606	Disc—Choke	1
5	220-217	Cutter Pin—Choke Rod	1
7	221-612	Gasket—Choke Flange	1
8	221-616	Seal—Air—Choke to Air Filter	1
9	221-611	Screw—Choke Mounting	2
10	260-308	Washer—Lock—Choke Mounting Screw	2
13	221-613	Rod—Choke Control	1
14	221-526	Nut—Choke Knob Lock	1
15	221-614	Knob—Choke	1

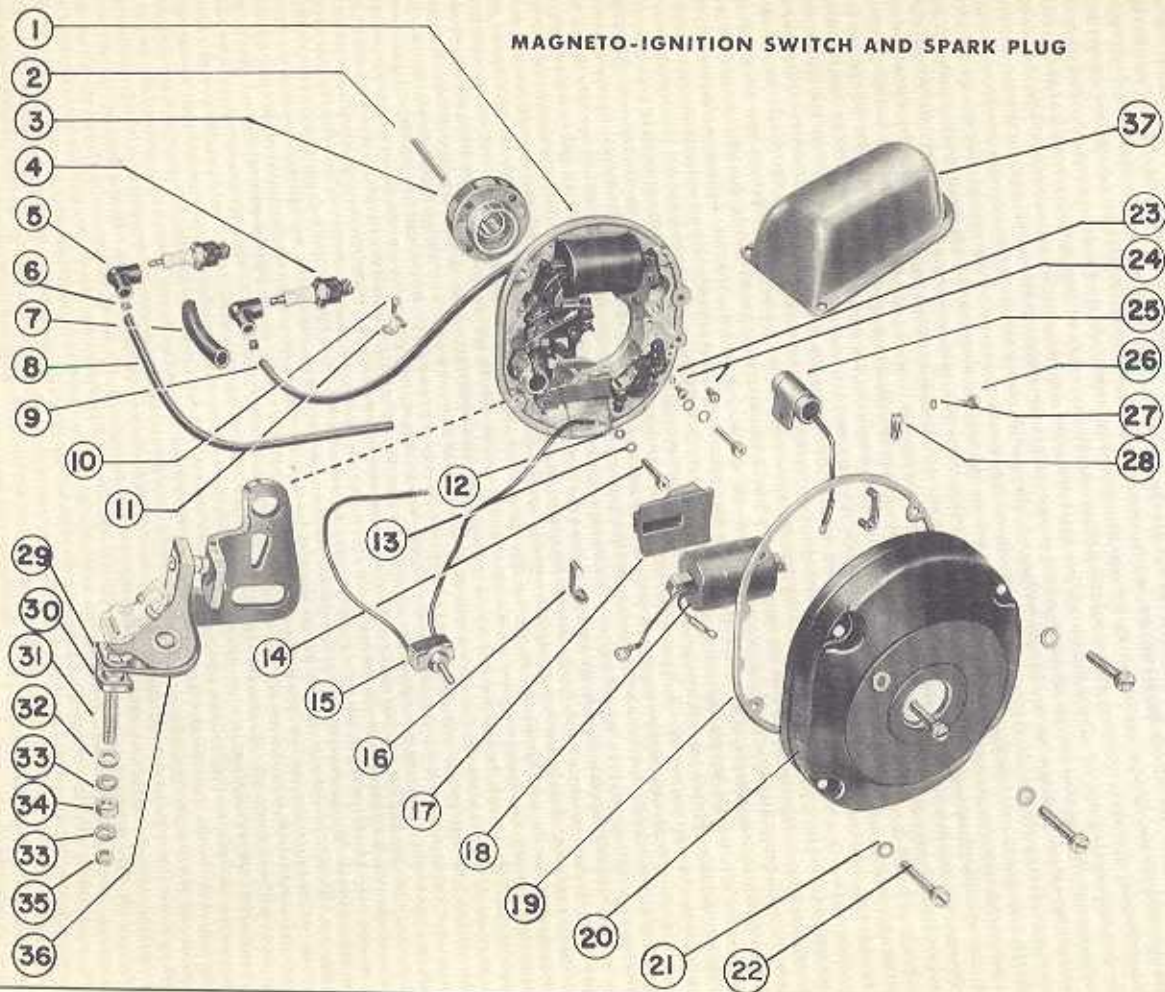
STARTER



STARTER**Group 223-200**

REF. NO.	PART NUMBER	DESCRIPTION	NO. REQ.
1	230-466	Endplug—Starter Cable	1
2	230-465	Handle—Starter Cable	1
3	260-114	Screw—Starter Cable Guide	2
4	260-319	Washer—Lock—Starter Cable Guide Screw	2
5	223-216	Guide—Starter Cable	1
6	223-215	Cable Assembly—Starter	1
—	230-464	Anchor—Starter Cable	1
7	223-211	Lockring—Starter Sheave Retaining	1
8	223-210	Washer—Thrust (Brass)	1
9	223-209	Plate—Pawl Retaining	1
10	223-208	Washer—Tension	1
11	223-207	Washer—Thrust (Steel)	1
12	223-213	Pawl—Starter	2
13	223-214	Washer—Tension—Starter Pawl	2
16	223-202	Sheave Assembly—Starter	1
14	223-204	Screw—Starter Pawl Pivot	2
15	223-205	Pin—Starter Spring Anchor	1
—	223-206	Rivet—Snubber	1
17	223-212	Spring—Starter Rewind	1
18	271-900	Screw—Pilot Assembly Fastening	3
19	223-200	Pilot Assembly—Starter Sheave	1

MAGNETO-IGNITION SWITCH AND SPARK PLUG



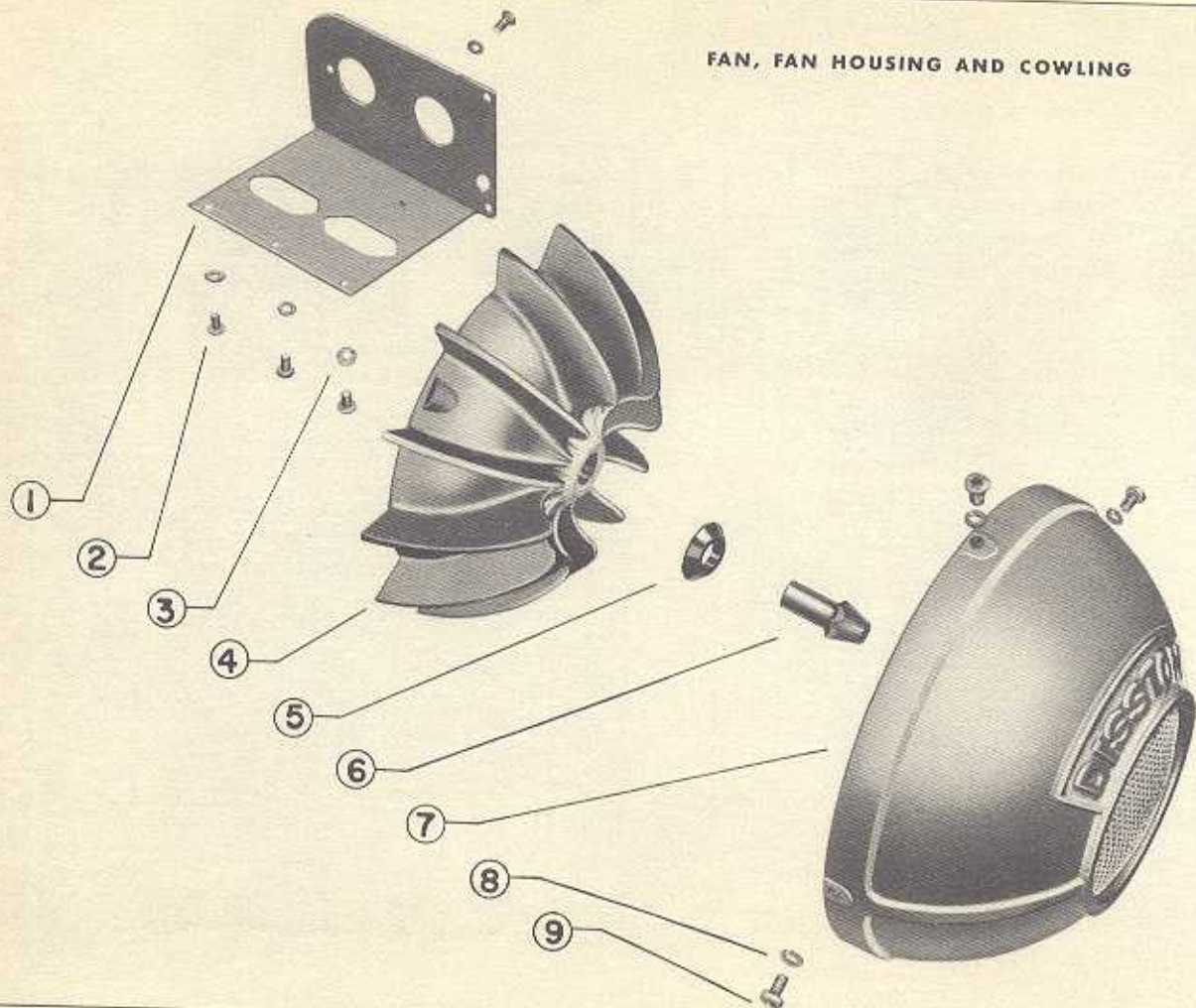
MAGNETO, IGNITION SWITCH, and SPARK PLUG

REF. NO.	PART NUMBER	DESCRIPTION	NO. REQ.
—	231-100	Magneto Assembly	1
1	231-101	Flange Assembly—Magneto	1
3	231-102	Rotor and Breaker Cam—Magnetic	1
8	231-104	Cable—Spark Plug (#2 Cyl.—13½")	1
9	231-103	Cable—Spark Plug (#1 Cyl.—14¾")	1
10	260-106	Screw and Lockwasher—Cable Clamp	2
11	230-203	Clamp—Spark Plug Cable	2
16	230-205	Clamp—Coil	4
17	230-206	Insulator—Spark Plug Cable	2
18	230-264	Coil Assembly	2
19	230-226	Gasket—Magneto Cover	1
20	230-227	Cover—Magneto	1
—	271-914	Washer—Felt—Magneto Cover	1
—	271-915	Ring—Felt Washer Lock	1
21	230-235	Washer—Plain—Magneto Cover Screw	4
22	230-234	Screw and Lockwasher—Magneto Cover	4
23	231-120	Washer, Plain Stationary Contact Point	2
24	231-107	Screw and Lockwasher—Contact Point	4
25	231-108	Condenser	2
26	230-265	Screw—Condenser Fastening	2
27	231-109	Washer—Lock—Condenser Fastening Screw	2
28	231-110	Clip—Condenser Lead Wire	2

Group 231-100

REF. NO.	PART NUMBER	DESCRIPTION	NO. REQ.
—	230-257	Point Assembly—Contact	2
29	230-239	Washer—Plain—Terminal Screw	2
30	230-240	Bushing—Insulating	2
31	230-242	Screw—Contact Point Terminal	2
32	230-241	Washer—Insulating	2
33	230-231	Washer—Lock—Terminal Screw Nut	4
34	230-243	Nut—Terminal Screw (Large Hex.)	2
35	260-201	Nut—Terminal Screw (Small Hex.)	2
36	231-106	Spring—Breaker Lever	2
2	231-111	Key—Magneto Rotor and Fan Hub	1
4	231-118	Spark Plug (Champion 163)	2
5	231-114	Connector—Spark Plug	2
6	231-115	Spring—Spark Plug Connector	2
7	230-425	Sheath—Spark Plug Cable	1
12	231-113	Washer—Magneto Mounting Screw	2
13	260-310	Washer—Lock—Magneto Mounting Screw	2
14	231-112	Screw—Magneto Mounting	2
15	231-116	Switch—Ignition	1
—	231-117	Terminal—Ignition Switch Wire	2
37	231-119	Cover—Spark Plug	1
—	260-114	Screw—Spark Plug Cover	3
—	260-319	Washer—Lock—Spark Plug Cover Screw	3

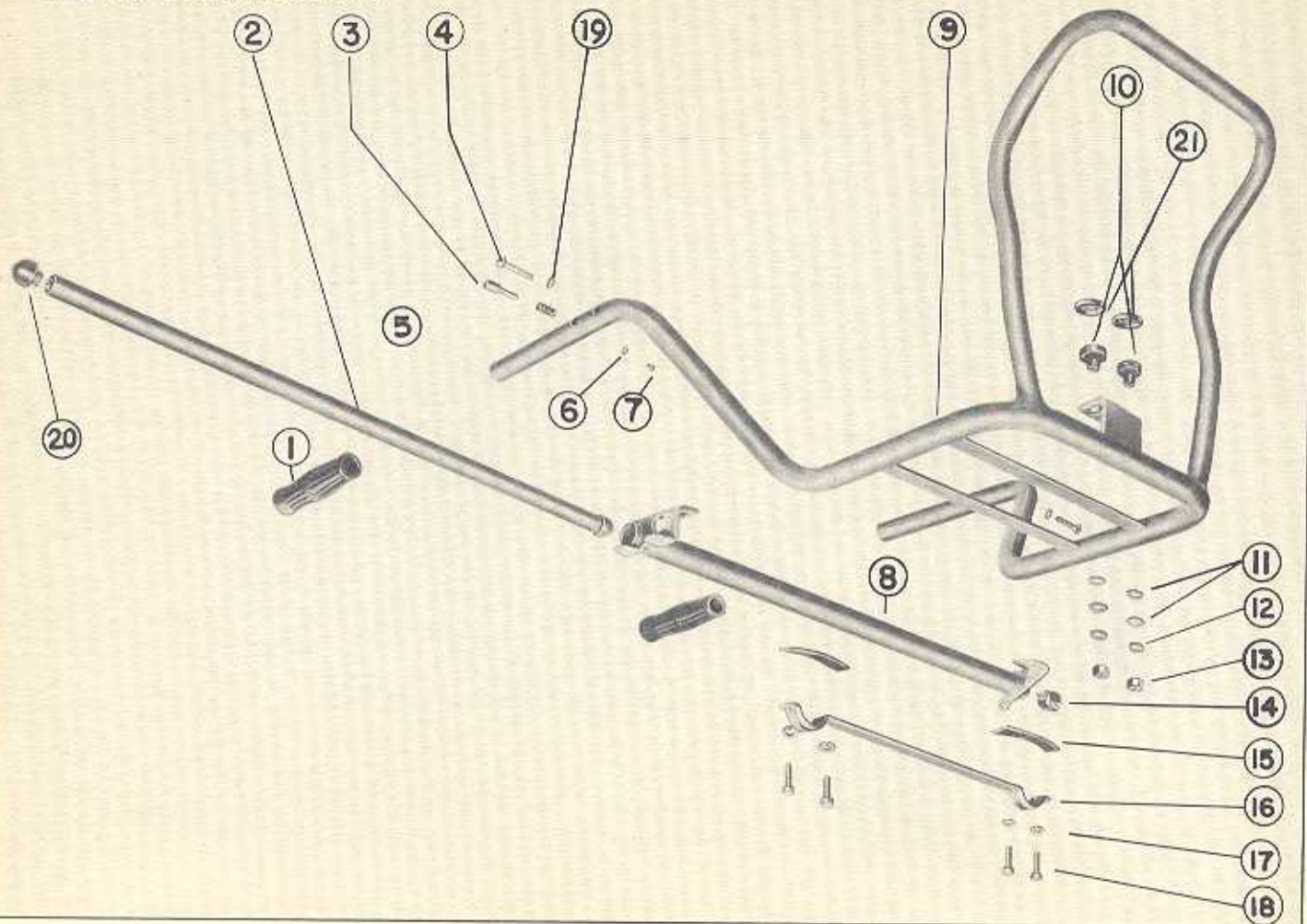
FAN, FAN HOUSING AND COWLING



FAN, FAN HOUSING AND COWLING Group 234-100

REF. NO.	PART NUMBER	DESCRIPTION	NO. REQ.
1	234-106	Cowl—Cylinder	1
2	260-129	Screw—Cylinder Cowl Fastening	4
3	260-319	Washer—Lock—Cylinder Cowl Fastening Screw	4
4	234-100	Fan Assembly	1
5	234-101	Washer—Fan Hub Nut	1
6	234-102	Nut—Fan Hub	1
7	234-103	Housing Assembly—Fan	1
—	234-105	Screen Assembly—Fan Housing	1
8	260-319	Washer—Lock—Fan Housing Fastening Screw	3
9	260-129	Screw—Fan Housing Fastening	3

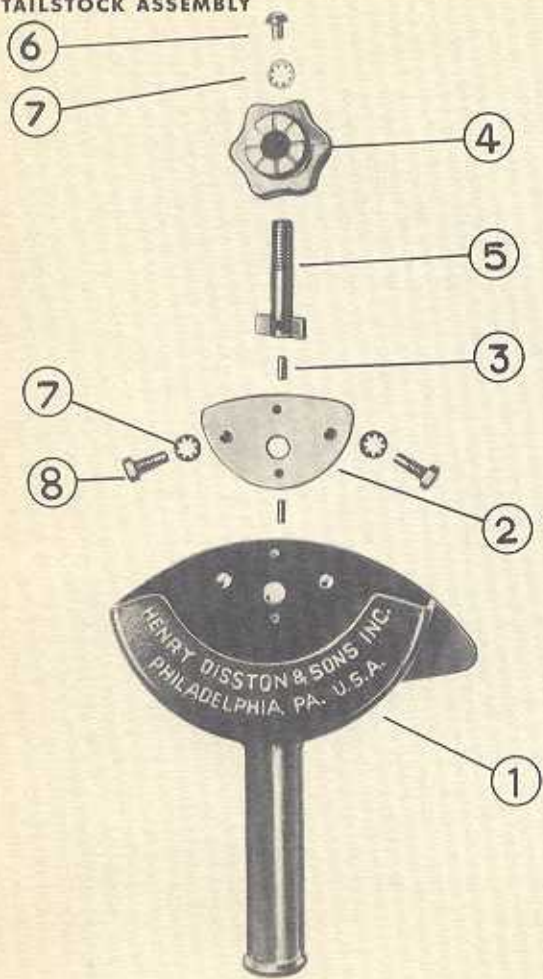
CARRYING FRAME AND FITTING



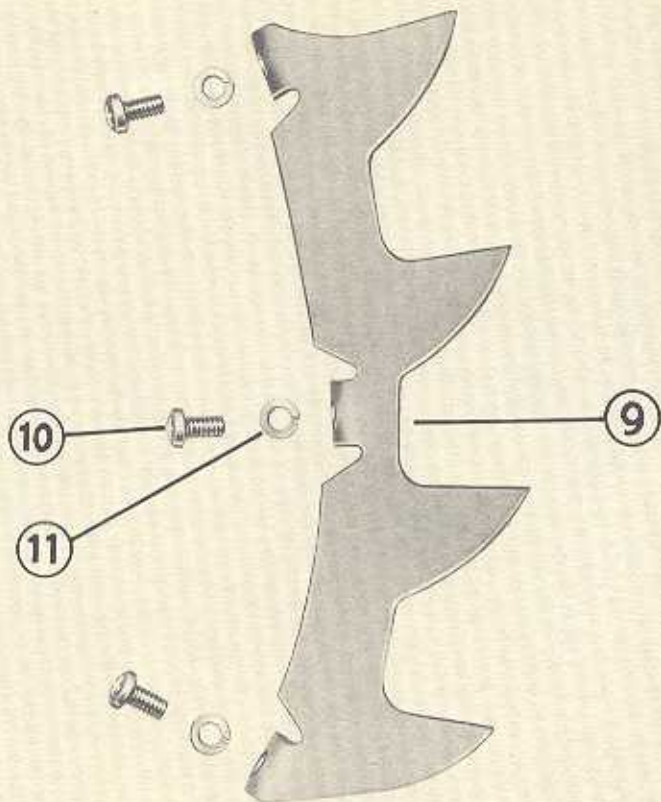
CARRYING FRAME AND FITTING**Group 241-100**

REF. NO.	PART NUMBER	DESCRIPTION	NO. REQ.
—	241-100	Frame Assembly—Carrying	1
1	241-104	Grip—Carrying Handle	2
2	241-105	Crossbar—Carrying Handle (Inner)	1
20	241-110	Spacer—Crossbar	1
3	241-108	Pin—Throttle Lock	1
4	260-021	Screw—Crossbar Attaching	2
5	241-109	Spring—Throttle Lock Pin	1
6	241-342	Washer—Throttle Lock Screw	1
7	260-125	Screw—Throttle Lock	1
8	241-106	Tube Assembly—Throttle Control	1
9	241-101	Frame—Carrying	1
14	241-107	Spring—Throttle Control Tube	1
15	241-103	Cushion—Carrying Frame Clamp Strap	2
16	241-102	Strap—Carrying Frame Clamp	1
17	260-319	Washer—Lock—Clamp Strap Screw	4
18	260-114	Screw—Carrying Frame Clamp Strap	4
19	271-931	Washer—Internal Shakeproof	2
10	220-372	Bushing—Rubber	2
11	220-373	Washer—Frame to Crankcase Stud (Rubber)	4
12	260-322	Washer—Frame to Crankcase Stud (Steel)	2
13	260-208	Nut—Frame to Crankcase Stud	2
21	241-112	Cap—Bushing Retainer	2

TAILSTOCK ASSEMBLY



HOLDING CLAW



TAILSTOCK

Group 271-890

REF. NO.	PART NUMBER	DESCRIPTION	NO. REQ.
—	271-890	Tailstock Assembly	1
1	271-891	Housing—Tailstock	1
2	271-893	Pad—Rail Mounting	1
3	271-855	Pin—Mounting Pad Holding	2
4	271-799	Nut—Locking	1
5	271-898	Bolt—Locking & Togg-	1
6	271-895	Screw—Stop	1
7	271-896	Lockwasher—Stop Screw & Locating Pin	3
8	271-897	Pin—Locating	2

HOLDING CLAW

REF. NO.	PART NUMBER	DESCRIPTION	NO. REQ.
—	271-918	Holding Claw with Fasteners	1
9	271-918-1	Claw—Holding	1
10	260-129	Screw— $\frac{1}{4}$ "—20 x $\frac{1}{2}$ " Phil. Binder Hd.	3
11	260-319	Lockwasher— $\frac{1}{4}$ " Split	3

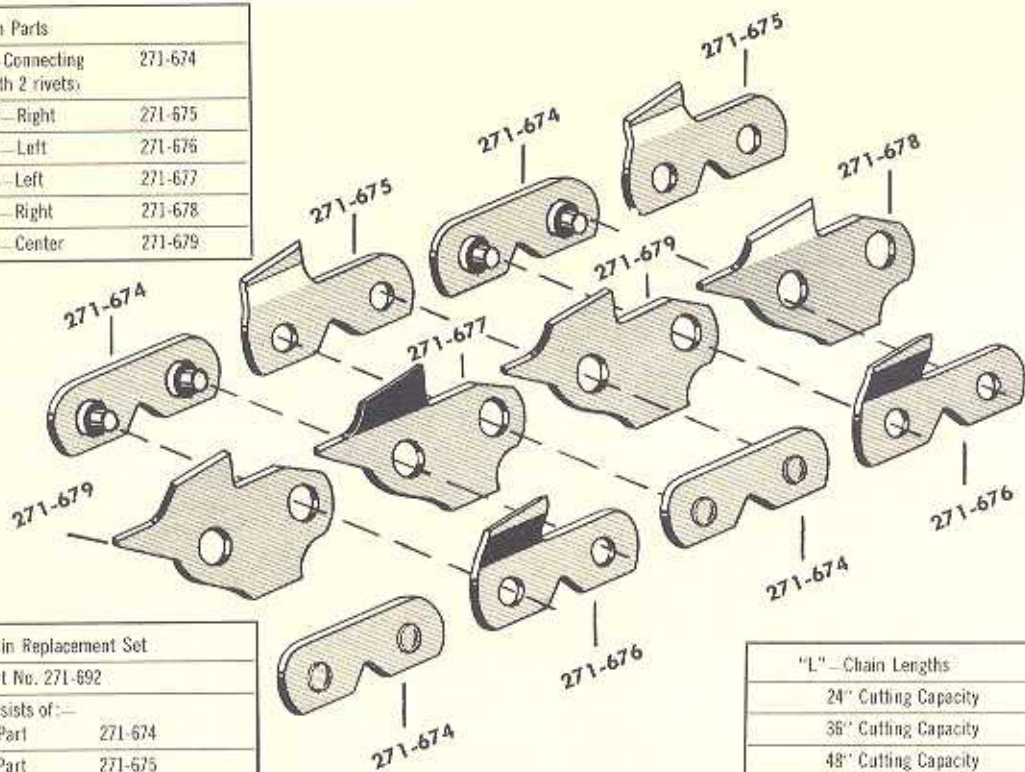
GUIDE RAILS



CUTTING CAPACITY	DESCRIPTION	PART NO.
24"	Guide Rail	271-102
36"	Guide Rail	271-103
48"	Guide Rail	271-104
60"	Guide Rail	271-105
72"	Guide Rail	271-106
84"	Guide Rail	271-107

CUTTING CHAINS**"L" type ("Leader")**

"L" - Chain Parts	
Link - Connecting (with 2 rivets)	271-674
Cutter - Right	271-675
Cutter - Left	271-676
Raker - Left	271-677
Raker - Right	271-678
Raker - Center	271-679



"L" - Chain Replacement Set	
Part No.	271-692
consists of:-	
12 Part	271-674
6 Part	271-675
6 Part	271-676
3 Part	271-677
3 Part	271-678
6 Part	271-679

"L" - Chain Lengths	
24" Cutting Capacity	271-112
36" Cutting Capacity	271-113
48" Cutting Capacity	271-114
60" Cutting Capacity	271-115
72" Cutting Capacity	271-116
84" Cutting Capacity	271-117
25' Cutting Capacity - Bow	271-195

GASKET SETS — DA-211

Engine Gasket Set—(Large) Part No. 271-141

Consists of:

- 2—211-103 Seal—Oil—Mainshaft
- 1—211-111 Gasket—Bearing Housing
- 2—211-403 Gasket—Cylinder Base
- 1—211-502 Gasket—V—Block Mounting
- 1—211-508 Gasket—Inlet Valve Manifold
- 2—211-703 Gasket—Muffler Adapter Plate
- 2—212-119 Gasket—Air Vent & Pressure Relief
- 2—212-122 Gasket—Check Valve Body
- 1—212-123 Seal—"O" Ring—Oil Pump Plunger
- 1—212-128 Gasket—Transmission Case Cover
- 1—212-146 Gasket—Adjusting Valve Body
- 1—220-106 Gasket—Bowl Cover
- 1—220-115 Gasket—Fuel Inlet Valve Seat
- 2—220-126 Packing—Gland
- 1—220-128 Gasket—High Speed Needle Valve Gland
- 1—220-144 Gasket—Bowl Drain Screw
- 2—220-352 Gasket—Filter Element End
- 1—220-371 Gasket—Fuel Filter Body
- 2—220-380 Gasket—Cap
- 2—221-405 Gasket—Filter Element—(Rubber)
- 1—221-516 Gasket—Carburetor Mounting
- 1—221-612 Gasket—Choke Flange
- 1—230-226 Gasket—Magneto Cover
- 1—240-122 Seal—"O" Ring—Check Valve Body
- 1—221-616 Seal—Air—Choke to Air Filter
- 1—260-587 Seal—"O" Ring—Oilier Adj. Valve
- 1—271-314 Washer—Felt—Magneto Cover

Engine Gasket Set—Part No. 271-920

Consists of:

- 1—211-111 Gasket—Bearing Housing
- 2—211-403 Gasket—Cylinder Base
- 1—211-502 Gasket—V—Block Mounting
- 1—211-508 Gasket—Inlet Valve Manifold
- 2—211-703 Gasket—Muffler Adapter Plate
- 1—212-128 Gasket—Transmission Case Cover
- 1—220-371 Gasket—Fuel Filter Body
- 2—220-380 Gasket—Cap
- 1—221-516 Gasket—Carburetor Mounting
- 1—221-612 Gasket—Choke Flange
- 1—221-616 Seal—Air—Choke to Air Filter

TOOLS AND ACCESSORIES

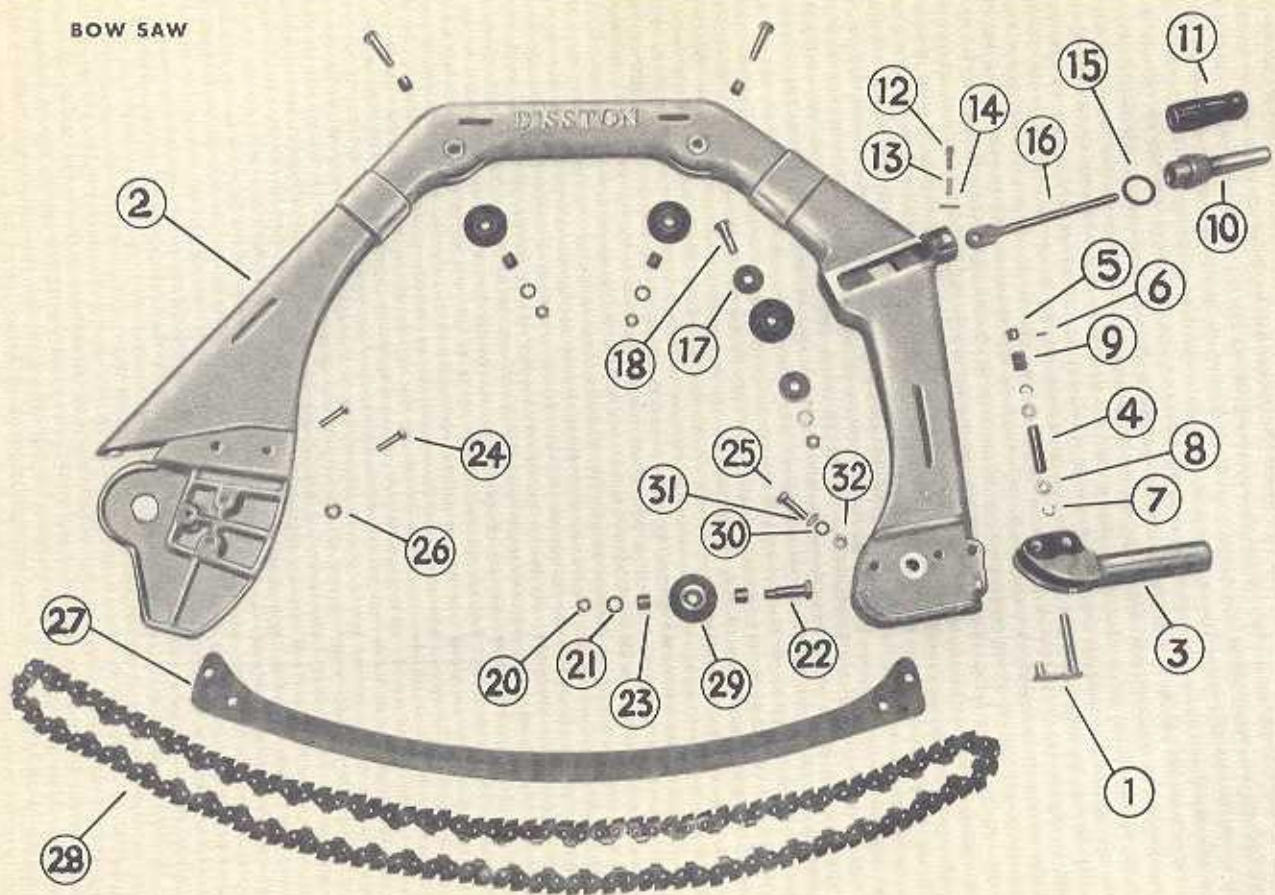
REF. NO.	PART NUMBER	DESCRIPTION	NO. REQ.
—	271-130*	Tool Roll Assembly	1*
1	271-488	Tool Roll	1
2	271-131	Wrench—T Socket $\frac{9}{16}$ "	1
3	271-132	Screw Driver—3" Small Tipped	1
4	271-346	Screw Driver—4" Common Point	1
5	271-347	Screw Driver—Phillips #3	1
6	271-219	Wrench—Open End— $\frac{1}{2}$ " x $\frac{7}{16}$ "	1
7	271-917	Brush—Air Cleaner	1
8	261-100	Wrench—Spark Plug	1
9	261-102	Puller—Fan Hub	1
10	261-101	Gauge—Spark Plug & Breaker Point	1
—	271-001	Handbook—Operator's	1
—	271-002	Catalog—Parts—Small	1
11	271-299*	Can—Fuel—2 $\frac{1}{2}$ Gal. Capacity	1*
12	271-490	Spout—Flexible Pouring	1
13	271-490-1	Collar—Strainer	1
14	271-490-2	Strainer	1
15	271-299-1	Cap—Small Spout	1
16	271-374	Wrench—Box & Open End— $\frac{1}{2}$ "	1
17	271-375	Wrench—Box & Open End— $\frac{9}{16}$ "	1
18	271-531	File—"C" Chain—6" Lozenge	1
19	271-540	Wrench—Allen— $\frac{1}{4}$ "	1
20	271-591	Gauge—Hook Angle	1
21	271-597	Gauge—Multiple Feeler	1
22	271-923	Wrench—Adjustable—6"	1
23	271-924	Wrench—Open End— $\frac{9}{16}$ " x $\frac{3}{8}$ "	1

(Continued)

REF. NO.	PART NUMBER	DESCRIPTION	NO. REQ.
24	271-925	Screw Driver—Cabinet Type—8"	1
25	271-926	Wrench—Open End Ignition— $\frac{1}{2}$ "	1
26	271-927	Screw Driver—Phillips #1	1
27	271-928	Wrench—Box & Open End— $\frac{7}{16}$ "	1
28	271-227	Stake—Riveting	1
29	271-345	Runway—Chain	1
30	271-348	Pliers—Combination—6"	1
31	271-349	Hammer—Ball Peen— $\frac{1}{2}$ lb.	1
32	271-351	Anvil—Riveting	1
33	271-362	Gauge—Guide Rail Slot	1
34	271-370	Chisel—Cold	1
35	271-384	File—8" Flat with 2 Rd. edges	1
36	271-396	Handle—File	1
37	271-476	Cleaner—Guide Rail Slot	1
38	271-484	Gauge—Joint & Set	1
39	271-487	Setting Tool	1
40	271-499	Bar—Joining	1
	271-528	Spray Lacquer—Orange	1
	271-529	Spray Lacquer—Alum.	1

*Included with the DA-211 Chain Saw Unit

BOW SAW



BOW SAW

REF. NO.	PART NUMBER	DESCRIPTION	NO. REQ.
—	271-145	Bow Saw Attachment Complete with Trans.	1
—	271-146	Bow Saw Transmission Assembly	1
—	271-142	Bow Saw Attachment Kit	1
1	271-143	Release Rod & Locating Pin Assembly	1
*	271-144	Oiler Assembly—Bow Saw (Component parts listed on Page 49)	1
2	271-150	Frame—Bow Saw	1
3	271-151	Handle—Folding	1
4	271-152	Sleeve—Release	1
5	271-154	Knob—Release Rod	1
6	271-157	Pin—Release Rod Knob	1
7	271-158	Ring—Crescent Retaining	2
8	271-159	Washer—Tension	2
9	271-160	Spring—Release Rod Compression	1
10	271-171	Handle—Tensioning	1
11	271-172	Grip—Handle	1
12	271-173	Plunger—Tension Locking	1
13	271-174	Spring—Locking Plunger	1
14	271-175	Pin—Plunger Locating	1
15	271-177	Washer—Tension Thrust	1
16	271-178	Yoke—Tension	1
17	271-179	Plate—Yoke	2
18	271-180	Shaft—Yoke Idler	1
20	271-184	Nut—Idler Shaft	4
21	271-185	Lockwasher—Idler Shaft Nut	4
22	271-186	Shaft—Idler	3
23	271-199	Spacer—Idler Shaft	6
24	271-189	Screw—Frame Mounting	2
25	271-190	Screw—Rail Mounting—Rear	1
26	271-193	Spacer—Rail	1
27	271-194	Rail—Bow Saw Guide—25"	1
28	271-196**	Chain—25"—Bow—"L" type	1

BOW SAW (Continued)

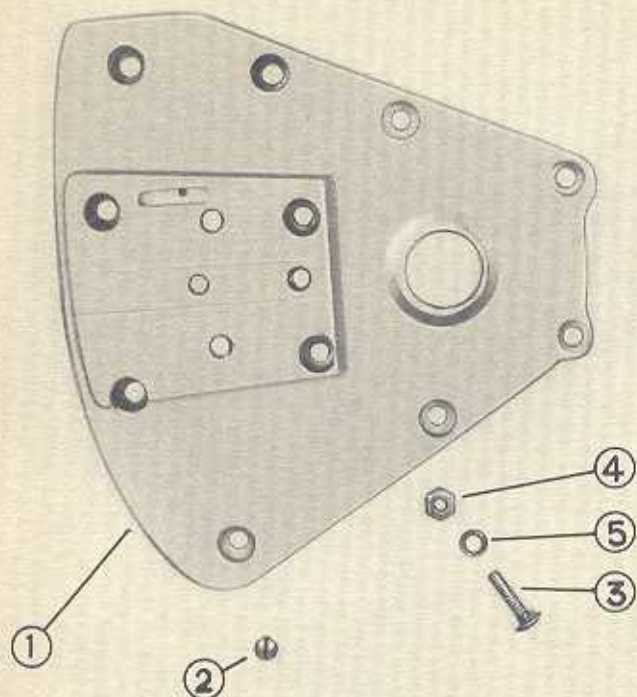
REF. NO.	PART NUMBER	DESCRIPTION	NO. REQ.
29	271-198	Idler and Bearing Assembly	4
*	271-205	Bolt—Transmission Cover Plug	1
*	271-206	Nut—Trans. Cover Plug Bolt	1
*	271-207	Washer—Fiber—Trans. Cover Plug	1
30	260-343	Lockwasher—Rail Mtg. Screw	1
31	260-353	Washer—Flat—Rail Mtg. Screw	1
32	230-468	Nut—Rail Mtg. Screw	1

*See page 48 for illustration of Oiler Assembly and Transmission Cover Plug Bolt, Nut, and washer.

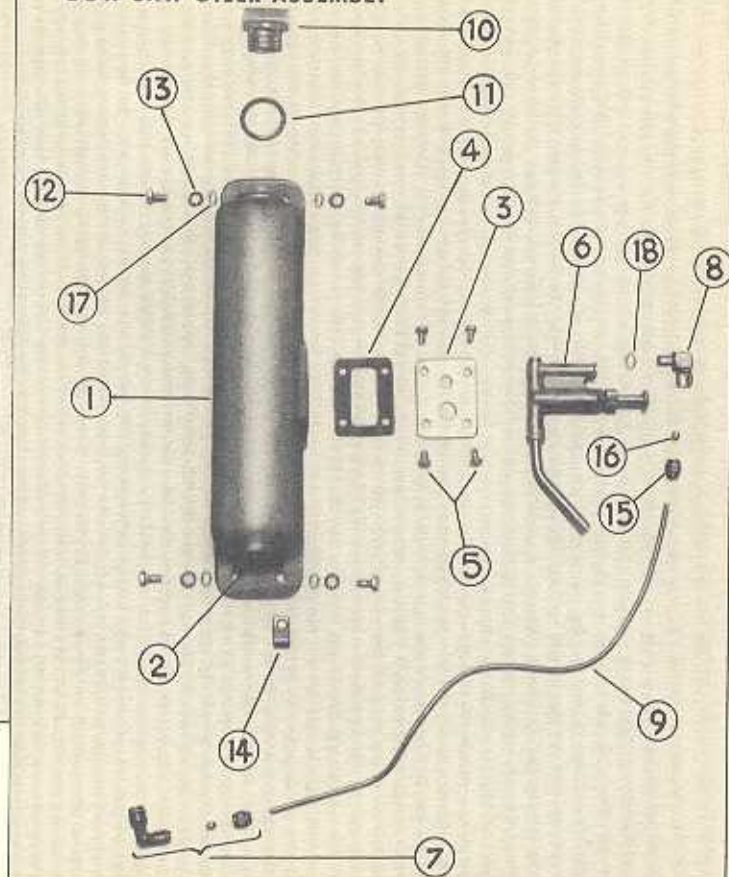
**Bow Saw Attachment Complete with Transmission, Part No. 271-145, and Bow Saw Attachment Kit, Part No. 271-142 are also available with "C" type chain, Part No. 271-195. Be sure to specify when ordering if "C" type chain is required.

NOTE: Early model bow saw attachments were assembled with a two piece idler, Part No. 271-203, which was used with wide idler shaft spacers, Part No. 271-187, and a yoke shaft spacer, Part No. 271-181. Current models use idlers and spacers as listed here.

BOW SAW TRANSMISSION COVER



BOW SAW OILER ASSEMBLY



BOW SAW TRANSMISSION COVER

REF. NO.	PART NUMBER	DESCRIPTION	NO. REQ.
1	271-197	Cover—Bow Saw Transmission	1
2	260-402	Plug— $\frac{1}{8}$ " Pipe	1
3	271-205	Bolt—Transmission Cover Plug	1
4	271-206	Nut—Transmission Cover Plug Bolt	1
5	271-207	Washer—Fiber Transmission Cover Plug	1

Bow Saw Transmission Cover, Part No. 271-197 when ordered from the factory will include a $\frac{1}{8}$ " Pipe Plug, Part No. 260-402 in the Guide Rail Key fastening Bolt hole.

The Bow Saw Attachment Kit, Part No. 271-142 includes a Bolt, Part No. 271-205, and Nut, Part No. 271-206, and a Fiber Washer, Part No. 271-207 to be used in plugging the Guide Rail Key fastening Bolt hole on the standard straight rail transmission cover.

BOW SAW OILER ASSEMBLY

REF. NO.	PART NUMBER	DESCRIPTION	NO. REQ.
—	271-144	Oiler Assembly—Bow Saw	1
1	271-161	Reservoir—Oil	1
2	271-188	Plug—Weld	1
3	271-162	Plate—Oil Pump Mounting	1
4	271-163	Gasket—Mounting Plate	1
5	271-164	Screw—Pump Mounting	4
6	271-165	Pump Assembly—Oil	1
7	271-166	Elbow—Compression—Male	1
8	271-167	Connector—Oil Line	1
9	271-168	Oil Line— $\frac{1}{8}$ " Copper	1
10	271-169	Cap—Oil Reservoir	1
11	271-170	Gasket—Oil Reservoir Cap	1
12	271-191	Screw—Oil Reservoir Mtg.	4
13	271-192	Lockwasher—Oil Reservoir Mtg.	4
14	271-200	Clip—Oil Line	1
15	271-201	Nut—Gland— $\frac{1}{8}$ "	1
16	271-202	Gland— $\frac{1}{8}$ "	1
17	271-204	Washer—Oiler Mtg. Screw	3
18	271-207	Washer—Fiber	1

This Oiler Assembly, Part No. 271-144 is included with Bow Saw Attachment Complete with Transmission, Part No. 271-145, and Bow Saw Attachment Kit, Part No. 271-142 as illustrated on Page 46.

