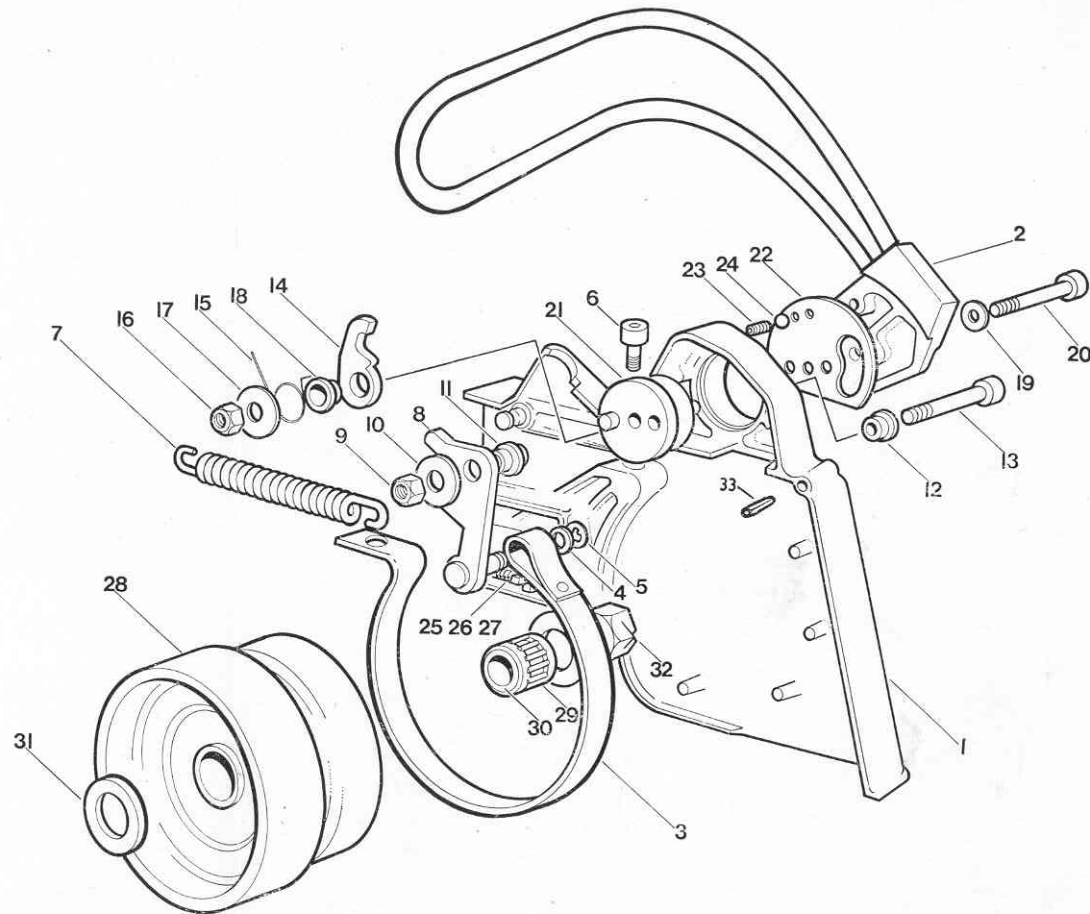


# DANARM 1-71-SS

## PARTS LIST FOR CHAIN BRAKE ARRANGEMENT

INDEX No.	PART No.	QTY.	DESCRIPTION
1	97501	1	Chain Brake Cover
2	97507	1	Guard Bracket Assembly
3	07525	1	Brake Band
4	07527	1	Washer
5	07528	1	Circlip
6	07907	1	Capscrew
7	07524	1	Spring
8	97522	1	Arm Assembly
9	07521	1	Nut
10	07520	1	Washer
11	07505	1	Pivot Bush
12	07506	1	Bush
13	07925	1	Capscrew
14	07517	1	Pawl
15	07519	1	Torsion Spring
16	07521	1	Nut
17	07520	1	Washer
18	07506	1	Bush
19	07976	1	Washer
20	07916	1	Capscrew
21	97514	1	Hub Assembly
22	07512	1	Sole Plate
23	07510	1	Spring
24	07511	1	Ball
25	07313	1	Chain Tension Screw
26	07311	1	Chain Tension Spigot
27	07957	1	Nut
28	07529	1	Sprocket Assembly
29	07307	1	Sprocket Bearing
30	07308	1	Inner Race
31	07309	2	Thrust Washer
32	07960	1	Nut
33	55754	1	Locating Pin



The following parts are not required for machines fitted with a chain brake arrangement

INDEX No.	PART No.	QTY.	DESCRIPTION
13	07310	1	Sprocket Guard
28	07306	1	Sprocket Assembly
134	07431	1	Safety Guard
135	07914	2	Screw
136	07956	2	Nut

**PARTS LIST FOR DANARM 1-71-SS  
CHAIN SAW**

INDEX PART		QTY.	DESCRIPTION
No.	No.		
1	07330	1	R.H. Cutter Links
2	07331	1	L.H. cutter links
3	07332	1	Centre drive links
4	07333	1	Side links
4A	07335	1	Preset side link/rivets
5	07334	1	Rivets
6	07320	1	16" chain
7	07321	1	21" } $\frac{3}{8}$ " pitch x .058" guage
8	07322	1	25" } micro chisel
9	07323	1	16" } cutter bar
10	07324	1	21" } (sprocket nose)
11	07325	1	25" }
12	07314	2	Side plate
13	07310	1	Sprocket guard
14	07954	2	Cutter bar nuts
15	07971	2	Washers
16	07316	1	Felling dog R.H.
17	07315	1	Felling dog L.H.
18	07907	2	Screws
19	07313	1	Screw-chain tension
20	07311	1	Spigot
21	07957	1	Nut
23	07118	2	Cutter bar bolts
24	07960	1	Nut-clutch
25	07309	2	Thrust washer
26	07308	1	Inner race
27	07307	1	Bearing
28	07306	1	Sprocket—7 tooth spur
29	07302	2	Clutch shoe
30	07301	1	Clutch driver
31	07303	2	Clutch spring
32	07304	2	Spring protecting plate
33	97301	1	Clutch complete
34	07113	2	Main seals
35	07114	3	Circlips
36	07253	1	Cam-oil pump
37	07107	1	Crankcase gasket
38	07112	2	Main bearing
39	07305	1	Clutch key
41	07109	2	Dowels—crankcase
42	97137	1	Crankshaft
		1	Big end bearing
		1	Connecting rod
45	07214	1	Flywheel key
46-47	97138	1	Crankcase Assembly (pair)

INDEX PART		QTY.	DESCRIPTION
No.	No.		
48	07909	7	Screws
48a	07916	1	Screw
49	07910	2	Screws
50	07131	1	Small end bearing
51	07133	1	Gudgeon pin
52	07121	2	Circlip
53	97134	1	Piston assembly
54	07122	2	Piston rings
55	07132	2	Thrust Washers
56	07108	1	Cylinder base gasket
57	97103	1	Cylinder Assembly
58	07921	4	Cylinder screws
59	07106	1	Head gasket
60	07105	1	Cylinder head
61	07921	6	Head screws
62	07436	1	Silencer gasket
63	07434	1	Silencer
64	07435	1	Keep plate
65	07918	2	Silencer screws
66	07906	1	Silencer screw
67	07153	1	Manifold gasket
68	07151	1	Manifold block
68a	07185	1	Manifold support plate
69	07914	3	Manifold screws
70	07155	1	Carburettor gasket
71	07154	1	Carburettor
72	07157	1	Filter manifold
73	07920	2	Carburettor screws
74	97178	1	Air filter Assembly
77	07428	2	Cable clamp
78	07912	1	Clamp screw
79	07429	1	Pressure plate
80	07952	1	Clamp nut
81	07427	1	Connecting link
82	07425	1	Cable ball nipple
83	07426	1	Cable trunnion nipple
84	07423	1	Throttle inner cable
85	07424	1	Throttle outer cable
86	97423	1	Throttle cable assembly
87	07911	1	Clamp screw
88	07416	1	Throttle lever
89	07421	1	Throttle bush
90	07422	1	Throttle return spring
91	07418	1	Throttle stop plunger
92	07419	1	Spring
93	07420	1	Retaining clip
94	07415	1	Finger grip
95	07413	1	Rear handle
96	07414	1	Handle cover
97	07908	2	Handle screws

INDEX No.	PART No.	QTY.	DESCRIPTION
97a	07909	1	Screw
98	07417	1	Strap
99	07904	2	Strap screws
100	97412	1	Rear spring assembly
101	07412	1	Anchor bar—rear
102	07409	4	Stud
103	07407	3	Limiting washer
104	07974	9	Washer
105	07978	6	Grip washer
106	07959	6	Lock nut
107	07440	1	Spring
108	07411	1	Anchor stud
109	07958	1	Lock nut
110	07921	2	Screw
111	07902	1	Screw—idle speed adjustment
112	07156	1	Spring
113	97410	1	Front spring assembly
114	07410	1	Anchor bar—front
115	07441	1	Spring
116	07404	2	Locking saddle
117	07402	2	Front spring covers
118	07910	2	Cover screws
119	07956	2	Cover nuts
120	07923	1	Cover clamp screw
121	07957	1	Cover clamp nut
122	97408	1	Lower spring assembly
123	07442	1	Spring
124	07408	1	Limiting stud
125	07403	1	Limiting plate
126	97401	1	Front handlebar
127	07922	2	Screws—handlebar
128	07957	2	Lock nuts—handlebar
129	07975	3	Washer—handlebar
130	07911	1	Screw—limiting plate
131	07430	1	Cowling
132	07917	1	Cowling screw
133	07913	2	Cowling screw
134	07431	1	Safety guard
135	07914	2	Guard screws
136	07956	2	Guard nuts
137	07226	1	Plug cover
138	07123	1	Fan cavity plate
139	07901	3	Plate screws
140	07201	1	Flywheel
141	07960	1	Flywheel nut
142			
143			
144	97364	2	Starter dog assembly
145			
146			

INDEX No.	PART No.	QTY.	DESCRIPTION
148	07905	1	Screw—starter pulley
149	07357	1	Retaining washer
150	07353	1	Starter pulley
151	07356	1	Pulley bearing
152	07359	1	Starter rope
153	07360	1	Rivet
154	97353	1	Pulley/rope assembly
155	07361	1	Starter handle
156	07362	1	Washer
157	07355	1	Recoil spring
158	07358	1	Protecting plate
159	07351	1	Starter body
160	07367	1	Cooling air grille
161	07368	4	Rivets—grille
162	07433	2	Name Decal
163	97351	1	Starter assembly
164	07913	2	Starter screws
165	07915	2	Starter screws
166	97203	1	Breaker points set
167	07204	1	Lid
168	07205	1	Gasket
169	07206	1	Spring clip
170	07207	1	Felt wick
171	97202	1	Breaker point housing assembly
172	07908	2	Housing screws
173	07973	2	Housing washers
174	07213	1	L.T. lead assembly
175	07225	1	Spark plug—Champion CJ6
176	07223	1	H.T. terminal
177	07224	1	H.T. cover
178	07220	1	H.T. lead
179	07221	1	H.T. sleeving
180	07222	1	Waterproof cover
181	97215	1	Core arm assembly
182	07217	1	Core arm
183	07216	1	Coil
184	07218	1	Retaining clip
185	07219	1	Condenser
186	07212	1	Earth lead assembly
187	07909	2	Core arm screws
188	07973	2	Core arm washers
189	07227	1	Cut out switch
190	07228	1	Cut out lead assembly
192	97161	1	Petrol cap assembly
193	07162	1	Cap seal
194	97265	1	Oil cap assembly
195	07266	1	Cap seal
196	07158	1	Choke lever
197	07160	1	Choke pin
198	07159	1	Choke grommet
199	07933	1	Set screw—lower spring ass'y

INDEX PART			
No.	No.	QTY.	DESCRIPTION
200	97172	1	Fuel tank vent assembly
201	07182	2	Fuel tank grommet
202	07172	1	Vent body
203	07173	1	Vent duck bill
204	07174	1	Vent spring
205	07175	1	Vent plate
206	07176	1	Vent felt
207	07171	1	Vent cap
208	07177	1	Vent outlet pipe
209	97169	1	Fuel pick up assembly
210	07169	1	Adaptor nipple
211	07166	1	Fuel pick up head
212	07167	1	Washer—head
213	07168	1	Fuel pick up pipe
214	07170	1	Fuel pipe
215	97251	1	Oil pump assembly
216	07255	1	Pump follower
217	07252	1	Guide bush
218	07931	1	Set screw—guide bush
219	97256	1	Plunger
220	07258	1	Plunger spring
221	07251	1	Pump barrel
222	07259	4	'O' ring
223	07260	1	Valve ball
224	07261	1	Valve spring
225	07932	1	Set screw—valve spring
226	07973	1	Washer
227	07264	1	Gland gasket
228	07263	1	Gland nut
229	07270	1	Adjuster screw
230	07262	1	Locking pin
231	97267	1	Oil filter unit
232	07269	1	'O' ring
233	07444	1	Safety lever
234	07443	1	Operating level
235	07445	1	Return spring
236	07446	2	Pivot pin
237	07180	1	Wire clip

**CARBURETTOR PARTS FOR MODEL  
HS 115A ITEM 71**

INDEX			
No.	No.	QTY.	DESCRIPTION
2	015636	1	Nozzle Check valve
3			
4			
5			
5	012809	1	Welch plug (large)
6	04784	1	Choke friction ball
7	08805	1	Choke friction spring
8	016239	1	Choke shaft and lever

INDEX			
No.	No.	QTY.	DESCRIPTION
9	015615	1	Choke shutter
10	013215	1	Diaphragm gasket
11	013278	1	Diaphragm
12	014550	1	Diaphragm cover
13	08942	4	Cover screws/lockwasher
14	014796	1	Flange gasket
15	013652	1	Fuel pump diaphragm
16	013218	1	Fuel pump gasket
17	013167	1	Fuel pump cover
18	011441	4	Cover screw/lockwasher
19	013902	1	Idle mixture screw
20	013692	1	Spring—idle mixture screw
21	014037	1	Throttle operating lever
22	014955	1	Lever screw
23	013395	1	Inlet control lever
24	013210	1	Inlet pinion pin
25	014887	1	Pin retaining screw
26	013396	1	Inlet needle
27	012727	1	Inlet screen
28	011503	1	Inlet tension spring
29	013900	1	High speed mixture screw
30	08793	1	Spring—high speed screw
31	016237	1	Throttle shaft and lever
32	013219	1	Throttle shaft clip
33	010280	1	Clip screw
34	013297	1	Shaft return spring
35	08646	1	Throttle shutter
36	010280	2	Shutter screw
37	GS-1 HS	1	Gasket set
38	RK-3 HS	1	Repair kit
	015329	1	Governor valve ass'y (not shown)
	010404	1	Gasket (not shown)

**TOOLS**

INDEX			
	No.	QTY.	DESCRIPTION
	07876	1	Hex key 2.5mm. A/F
N	07878	1	Hex key 4.0mm. A/F
O	07879	1	Hex key 5.0mm. A/F
T	07880	1	Spanner—cutter bar nuts
	07881	1	Spanner—spark plug
I	07882	1	Groove cleaner
L	07883	1	Round file $\frac{7}{32}$ " dia.
L	07884	1	File handle
U	07887	1	File holder
S	07889	1	Screwdriver—adjustments
T	07890	1	Feeler gauge—.010" (flywheel air gap)
R			
A	07891	1	Feeler gauge—.020" (spark plug/breaker points)
T			
E	07888	1	Tool bag
D	07885	1	Instruction book
	07886	1	Parts layout sheet
	07892	1	Parts list (English)

(Ref. No. 07892)